

RESOLUTION ORDERING REQUEST FOR PROPOSALS FOR INTERNET SERVICES PROVIDERS TO DEPLOY, OPERATE AND MAINTAIN A BROADBAND INTERNET NETWORK IN AREAS OF ASHTABULA COUNTY

WHEREAS, the Ashtabula County Board of County Commissioners desires to order Request for Proposals for Internet Service Providers to Deploy, Operate, and Maintain a Broadband Internet Network in Ashtabula County, now

THEREFORE, BE IT RESOLVED, By the Board of Commissioners of Ashtabula County, Ohio, that a proposal opening will be held on March 20, 2023 at 2:00 p.m. and received by the Board of Ashtabula County Commissioners and Lisa Hawkins, Clerk of the Board is hereby ordered to advertise in a newspaper of general circulation, via the internet at the Ashtabula County Website, <http://ashtabulacounty.us/bids> and to post notice of said proposal on the bulletin board as required by law.

**ASHTABULA COUNTY COMMISSIONERS
CERTIFICATION PAGE**

Resolution No. 2023-126

February 28, 2023

RESOLUTION ORDERING REQUEST FOR PROPOSALS FOR INTERNET SERVICES PROVIDERS TO DEPLOY, OPERATE AND MAINTAIN A BROADBAND INTERNET NETWORK IN AREAS OF ASHTABULA COUNTY

Upon the motion of J.P. Ducro IV, seconded by Kathryn L. Whittington.

VOTE:

**Casey R. Kozlowski
Kathryn L. Whittington
J.P. Ducro IV**

**Absent
Aye
Aye**

CERTIFICATE OF CLERK

IT IS HEREBY CERTIFIED that the foregoing is a true and correct transcript of a resolution acted upon and duly passed by the Board of County Commissioners of Ashtabula County, Ohio, on the date noted above.



Lisa Hawkins, Clerk of the Board
Board of County Commissioners
Ashtabula County, Ohio

REQUEST FOR PROPOSALS FOR INTERNET SERVICE PROVIDERS TO DEPLOY, OPERATE AND MAINTAIN A BROADBAND INTERNET NETWORK

Ashtabula County, Ohio is requesting sealed proposals for Internet Service Providers to Deploy, Operate, and Maintain a Broadband Internet Network. Said proposals are to be sent to the Ashtabula County Board of Commissioners, Attn: Lisa Hawkins, Clerk of the Board, 25 W. Jefferson Street, Jefferson, Ohio 44047 no later than 2:00 p.m. on March 20, 2023.

This RFP reflects the commitment of the County to ensure high-speed broadband is available to as many local residents and businesses (collectively “premises”) as possible.

The purpose of the RFP is to seek innovative or traditional broadband solutions from one or more Applicants proposing one or multiple solutions over all or portions of the County. From these RFP responses, the County will select the best Applicant(s) to finalize project details by creation and execution of a contract with the County.

This notice and proposal documents are available online at the Ashtabula County’s Website at www.ashtabulacounty.us/bids and accessible by clicking the Bid Opportunities tab on the left side of the screen. To access project information, click on the appropriate RFP link. All questions should be in writing and addressed to Lisa Hawkins, Clerk and sent via email to: llhawkins@ashtabulacounty.us by 1:00 p.m. on March 13, 2023.

This project will be funded by an ARC Grant, Local Funds and Provider Funds, as applicable.

The Proposal may be obtained via the internet at www.ashtabulacounty.us/bids by clicking on “Bid Opportunities” on the left of the screen.

By order of the Board of County Commissioners, Ashtabula County, Ohio.

Casey R. Kozlowski, Kathryn L. Whittington, J.P. Ducro IV

Lisa Hawkins, Clerk of the Board

Publish: *Gazette Newspapers*
3/1/23 and 3/8/23

REQUEST FOR PROPOSALS FOR BROADBAND DEPLOYMENT IN ASHTABULA COUNTY, OHIO

RFP Issue Date: February 28, 2023
RFP Response Due Date: March 20, 2023

REQUEST FOR PROPOSALS

Ashtabula County, Ohio (COUNTY) is requesting proposals for broadband deployment from Internet Service Providers (ISP) to expand broadband service throughout Ashtabula County. Broadband is a critical infrastructure component needed by all segments of the community: for business development; job creation; health care services, including telemedicine; and to help rural areas compete with more densely populated areas. Broadband includes fixed wireless or fiber deployment or a combination of the two (collectively, the “Broadband Infrastructure”).

Specifically, COUNTY is seeking to identify partners to jointly submit an application for the Appalachian Regional Commission’s (ARC’s) Partnerships for Opportunity and Workforce and Economic Revitalization (POWER) Initiative grant application for Fiscal Year (FY) 2023. Up to \$2.5 million of POWER grant funding is available for broadband infrastructure. Any selected Respondent will be identified as a project partner in COUNTY’S POWER grant application and will only be awarded a contract for services upon COUNTY’S successful award of a POWER grant.

SECTION I: PROJECT DESCRIPTION

The majority of the build-out must serve economic development interests, which can have a wide range of applications, from traditional commercial business enterprise and manufacturing to agriculture businesses and cottage industries. As a result of the COVID-19 Pandemic, working from home, distant learning, and tele medicine will also be targeted for this project. A secondary focus can include serving residential areas, which should ideally be in conjunction with servicing economic development activities.

Proposals will be judged based upon the ISP capacity to deliver service speed of a minimum of 100/100mb symmetrical to business and 50/10mb for households, the extent of the coverage that they are able to deliver, the pricing for services, and the ability to invest up to 30% of the project total of their private sector and other investments, which may include assets already in place, in-kind services, and cash equity.

The primary scope of this project involves:

High-Level Design

The ISP Partner shall produce a high-level design for the service territory through which the distribution network must pass in order to create the federally necessitated Environmental Review documents.

The high-level design shall, when implemented, provide Broadband Infrastructure cost-effectively to the occupied premises.

The ISP will provide details of the areas to be included, including locations of premises to be served and estimated route mileage.

Permitting

ISPs are expected to obtain all local review and permitting approvals for the project.

Detailed Engineering Construction Design

The ISP Partner shall also produce a detailed network design and engineering plan for the construction of the system. The detailed design and engineering plan shall include, as applicable for fiber deployment, fixed wireless, or a combination of the two, specifications for:

1. The fiber distribution network
2. Construction maps and splice charts and network electronics.
3. The physical infrastructure and environmental systems necessary to house and support the network electronics.
4. Fiber connections to customer premises ("drops").
5. Customer premises equipment and cabling.
6. proposed wireless network architecture, including incorporation of existing vertical assets through mutually agreeable lease arrangements with the County and the construction of new vertical assets, as needed

Construction

The ISP Partner shall construct the Broadband Infrastructure that conforms with the network design and engineering specifications. Construction shall include all procurement or materials and labor; all utility connections and coordination; all licensing and permits; traffic control, construction and installation of the Broadband Infrastructure; and validation and optical testing.

Customer Premises Installations

The ISP Partner shall install at each customer premises the drop or fiber connection . The ISP Partner shall also install at each customer premises customer premises equipment and inside wiring that are necessary to connect the customer premises equipment in full conformance with the network design & engineering specifications, and technical and operational standards.

Project Management Support

The ISP Partner shall plan, schedule, budget, and obtain final approval from the COUNTY prior to initiating the construction, installation, operation support scope of work described above.

The ISP Partner shall provide leadership and supervision to all resources performing the work to ensure that the work is completed according to plan and the agreement.

The ISP Partner shall report at regular intervals progress to completion, spending against budget, and issues requiring resolution by the COUNTY.

Network Operations

The ISP Partner's operational responsibilities shall include systems integration, operation, maintenance, and coordination of repairs of all network infrastructure, systems, and electronics and periodic replacement of components that no longer operate reliably.

Network operations shall include:

1. Technical integration and quality assurance of network electronics and customer premises equipment before live service is initiated.
2. Network monitoring, trouble reporting, and dispatch.
3. Subscriber usage monitoring and traffic optimization.
4. Maintenance and replenishment of spare component and materials inventory for network

operations center.

Federal Interest on Materials and Fiber Optics

It is the intent of the COUNTY to transfer ownership of the constructed network and associated components to the winning ISP. This will be accomplished through an agreement developed between the parties.

The use of federal funds to procure the network requires the COUNTY to ensure federal interest into the investment is maintained for the “useful life” of the federal investment, currently defined as seven (7) years for network equipment and twenty (20) years for the fiber optic strands. Consequently, the ISP Partner shall enter into an agreement with the COUNTY to secure this federal interest.

SECTION II: PROJECT PARTNERS/INVESTMENT AREAS

The Governor’s Office of Appalachia has contracted with Appalachian Management Services to fulfil their role as the required Basic Agency. AMS will review the Environmental Review, process grant funds draw downs, and ensure compliance with federal standards such as site monitoring visits and compliance with procurement and prevailing wages.

The project areas are set forth in Appendix B.

SECTION III: PROJECT SCHEDULE

1. All proposals are due by 2:00 pm EST on Monday, March 20, 2023.
2. Project implementation schedule and phasing - please provide an estimated project timeline. Estimated time of award is October 1, 2023. Timeline should include:
 - a) Estimated project start and end dates.
 - b) Proposed date(s) for pre-project meeting with COUNTY.
 - c) Proposed date for project completion.

ISP will provide written monthly updates on progress and completed milestones during the work period.

SECTION IV: PROPOSAL RESPONSES

The following will be considered the minimal contents of the proposal:

1. Provide a restatement of the goals, objectives, and project tasks to demonstrate the responder’s understanding of the project and your approach to this project. Please reference the Project Description section in your responses.
2. Provide your background and experience in the following areas:
 - a. Coverage Area: summarize your company’s current service area footprint and estimated customer size, both residential and business.
 - b. Services: describe any direct experience and knowledge your company has in providing residential and business broadband services.

- c. Partnerships: share your company's experience in working with state and local governments and public-private sector collaborations.
3. Provide any information on prospective conflicts of interests, including existing or financial relations with equipment vendors, ISPs or other firms.
4. Provide a project implementation schedule and phasing. Timeline should include:
 - a) Estimated project start and end dates.
 - b) Proposed date(s) for pre-project meeting with COUNTY.
 - c) Proposed date for project completion.
5. Each proposer shall provide a minimum of three (3) references where similar projects have been completed. These projects should be similar in design and scope. Identify key personnel who will conduct the project and provide details of their training and work experience.
6. List potential subcontractors (see Appendix C) and include ISP's and subcontractor's MBE/WBE certifications.
7. ISPs must submit a proposal for services which sets forth options for the greatest extent of broadband service either through fiber, wireless, or mixed coverage in the underserved areas (see Appendix B), clearly delineating the costs per option.

SECTION V: PROPOSAL EVALUATION

The local project partner team and COUNTY will evaluate all proposals using the following criteria to conduct a best-value evaluation:

1. Experience and qualifications of the provider. (25 points)
2. A clear understanding of this project. (20 points)
3. The number of customers to be served. (15 points)
4. Speed of service to be provided. (15 points)
5. Consumer pricing of service. (15 points)
6. Amount of the ISP other investment i.e.: Land & Cash Equity, Existing Assets, etc. (15 points)
7. Providing broadband service outside the Investment areas. (20 points)
8. Timeline to build out from notice to proceed. (5 points)
9. MBE/WBE (5 points)

After evaluating all proposals, the local project partner team, comprised of COUNTY, County representatives, and a third-party consultant may choose to interview the top candidates.

Ashtabula County reserves the right to accept or reject any, and all proposals or to waive any irregularities and reserves the right to award one ISP per investment area or any combination thereof.

SECTION VI: Proposal Format and Submittal Procedure

All proposals must be electronically generated in a format capable of being used by Ashtabula County. Respondents must submit four (4) printed paper copies of their proposal and one (1) Portable Document Format (PDF) version of all proposal materials saved on a USB flash drive to the

Ashtabula County Board of Commissioners at **25 West Jefferson Street, 2nd Floor, Old Courthouse, Jefferson, Ohio 44047.**

Following the RFP Issue Date, Respondents may submit questions regarding this RFP at any time prior to **1:00pm Eastern on March 13, 2023** via electronic mail to the following address (the "County Authorized Representative"): lhawkins@ashtabulacounty.us. Any individual who would like to receive future updates on this RFP must submit their name, organization, and email address to the County Authorized Representative by such deadline as well. Questions submitted to the Authorized Representative do not create exceptions to the terms and conditions of this RFP.

All questions submitted to, and answers provided by the County Authorized Representative shall be shared on or before **March 17, 2023** with those individuals who submitted their name, organization, and email address in accordance with the requirements above. Respondents shall not contact any person who is an employee, officer, elected official or agent of Ashtabula County with respect to this RFP, except for the Authorized Representative. The Ashtabula County Commissioners may disqualify any Respondent who makes such contact.

The deadline for Ashtabula County's receipt of a Respondent's proposal, in both the printed and PDF versions as outlined above, is **March 20, 2023**. Respondents may submit their proposals any time prior to the above stated deadline. Failure to submit the required formats and number of copies by this deadline may be subject to disqualification from the RFP process. Ashtabula County shall bear no responsibility for submitting proposals on behalf of any Respondent. **No extensions shall be granted for responses to this RFP.**

Each Respondent shall carefully examine the RFP and thoroughly familiarize themselves with all requirements prior to submitting a proposal to ensure that the proposal meets the intent and requirements. Before submitting a proposal, each Respondent shall be responsible for making all investigations and examinations necessary to ascertain conditions affecting the intent and requirements. Failure to make such investigations and examinations shall not relieve the Respondent from its obligation to comply, in every detail, with all RFP provisions and requirements.

It is the Ashtabula County Commissioners' intent to commence final negotiations with the Respondent deemed most advantageous to Ashtabula County and most likely to deploy broadband to the most County locations (the "Awardee"). Ashtabula County reserves the right to conduct post-proposal discussions with any Respondent.

Section VII: Terms, Conditions, Limitations and Exceptions

1. This RFP does not commit Ashtabula County to issue an award or to pay any costs incurred in the preparation of a proposal in response to this RFP.
2. The proposals will become part of Ashtabula County's official files without any obligation on Ashtabula County's part.
3. All proposals received and any or all-supporting documentation are subject to the State of Ohio Public Records Act and the provisions of Ohio Law. The County will use

reasonable due diligence where lawful to protect materials clearly marked by any Respondent as "proprietary," "trade secret" or "confidential". General technology approach or business model information does not constitute "proprietary," "trade secret" or confidential information.

4. Respondent(s) shall not offer any gratuities, favors, or anything of monetary value to any official or employee of Ashtabula County.
5. Respondent(s) shall not collude in any manner, or engage in any practices, with any other Respondent(s) or Third Party, which may restrict or eliminate competition or otherwise restrain trade. This is not intended to preclude subcontracts and joint ventures for the purposes of: (1) responding to this RFP, or (2) establishing a project team with the required experience and/or capability to provide the services specified herein. Conversely, Ashtabula County can combine or consolidate proposals, or portions thereof, for the purposes mentioned herein.
6. All proposals submitted must be the original work product of the Respondent. The copying or paraphrasing of the work product of another Respondent is not permitted.
7. The RFP and the related responses of the selected Respondent may by reference become part of any formal agreement between the selected Respondent and Ashtabula County. Ashtabula County and the selected Respondent may negotiate a contract or contracts for submission to Ashtabula County for consideration and approval. In the event an agreement cannot be reached with the selected Respondent, Ashtabula County reserves the right to select an alternative Respondent. The County reserves the right to negotiate with alternative Respondent(s) the exact terms and conditions of the contract.
8. Respondents, their authorized representatives, and their agents are responsible for obtaining, and will be deemed to have full knowledge of the conditions, requirements, and specifications of the RFP at the time a proposal is submitted to Ashtabula County.
9. Ashtabula County may terminate its review of a Respondent's proposal or an Awardees' performance under a contract in the event of a default by the Respondent or Awardee and a failure to cure such default after receiving notice of default from Ashtabula County. Default may result from the Respondent's or Awardee's failure to perform under the terms of the contract or from the Respondent or Awardee becoming insolvent, having a substantial portion of its assets assessed for the benefit of creditors, or having a receiver or trustee appointed.
10. Ashtabula County reserves the right to unilaterally disqualify any Respondent who in Ashtabula County's opinion fails to provide information or data requested or who provides materially inaccurate or misleading information or data. Further, Ashtabula County reserves the right to unilaterally disqualify any Respondent based on any real or apparent conflict of

interest that is disclosed by the proposal submitted or any other data or information available to Ashtabula County. This disqualification is at the sole discretion of Ashtabula County. By submission of a proposal hereunder, the Respondent waives any right to object now, or at any future time, before anybody or agency, including but not limited to, Ashtabula County's elected officials, officers, agents, or employees, or any court, as to the exercise by Ashtabula County of such right to disqualify or as to any disqualification by reason of real or apparent conflict of interest determined by Ashtabula County.

11. Ashtabula County shall have the unilateral right to reject any Respondent RFP response including, but not limited to the following:
 - (a) Failure to submit the RFP response for Ashtabula County to receive it by the deadline of **March 20, 2023**.
 - (b) Failure to submit the RFP response to the correct location.
 - (c) Failure to submit the RFP response in the prescribed formats and number of copies.
 - (d) Failure to include all requested information.
 - (e) Taking exception to the terms, conditions, and specifications herein.

NOTE: Any deviation/ omission from the preceding list may void a Respondent response.

The issuance of this RFP and the acceptance of a proposal does not constitute an agreement by Ashtabula County that any contract or other agreement will be entered into by Ashtabula County. The County expressly reserves the right to:

- (a) Reject any or all proposals.
- (b) Reissue the RFP.
- (c) Accept portions of individual or multiple RFP responses.
- (d) Request more information and/or clarification of proposals from any or all Respondents.
- (e) Waive immaterial defect(s) or informality(ies).

The foregoing granting of exclusive negotiation rights does not commit Ashtabula County to accept all or any of the terms of the proposal(s). Final terms of any agreement will be agreed upon during negotiations. Negotiations may be terminated at any time by Ashtabula County for failure to reach mutually acceptable terms.

12. Ashtabula County reserves the right to request clarification of any proposal after all proposals have been received.
13. Ashtabula County reserves the right to select elements from different individual proposals and to combine and consolidate them in any way that best serves Ashtabula County's interest. Ashtabula County reserves the right to reduce the scope of the project and evaluate only the remaining elements from all proposals. Ashtabula County reserves the right to reject specific elements contained in all proposals and to

complete the evaluation process based only on the remaining items.

14. Any disputes arising out of this agreement that result in litigation shall attorn to the jurisdiction of an appropriate court either state or federal, for Ashtabula County, Ohio.
15. This RFP, the responses thereto, and any awarded contract thereunder shall for all purposes be construed and enforced in accordance with the laws of the State of Ohio and the United States of America without regard to conflict of law principles. All Respondents shall comply with any and all applicable orders, rules or regulations of the Federal Communications Commission ("FCC"), Public Utilities Commission of Ohio ("PUCO"), and Federal and State law in submitting a response to this RFP, and during the term and in performance of any contract awarded as a result of this RFP. The Awardee shall adhere to the requirements of the American Rescue Plan Final Rules, and the requirements of all further guidance issued by the U.S. Department of Treasury, or other applicable federal agency, on the American Rescue Plan, should Ashtabula County utilize American Rescue Plan funds in issuing an award under this RFP.
16. Entities submitting proposals must have the capacity to enter into a legally binding contract. All contract(s) amount(s), if any, resulting from this solicitation will be paid directly to the entity submitting accepted proposal(s). In any accepted proposal(s), to authorize payments directly to another third party upon contracting the proposing entity may be required to fully execute such proper payment authorization forms as acceptable to Ashtabula County.
17. The County reserves the right to conduct, for security reasons, a lawful background investigation on the selected Respondents, its principal party, personnel or subcontractors. Respondents agree to cooperate with Ashtabula County in this endeavor and to provide any permitted, reasonably necessary information. The County will, upon the Respondent's written request, provide a copy of such background investigations to the Respondents, to the extent allowable by law. Dependent upon the results of the background check, Ashtabula County may request the Respondents to immediately remove an individual from participation on this project. Respondents shall not knowingly assign any personnel with records of criminal conviction(s) to this Project without advising Ashtabula County of the nature and gravity of the offense. In fulfilling the obligations under this section, Ashtabula County and the Respondents shall comply with all laws, rules, and regulations relating to the making of investigative reports and the disclosure of the information contained therein. Ashtabula County and the Respondents shall, if allowed by law, indemnify, defend, and hold each other harmless against any wrongful disclosure by the indemnifying party, its employees, and/or agents of said reports and the information contained therein.
18. All selected Respondents shall be required during the project to cooperate fully, and in any reasonable manner Ashtabula County shall request, with all Ashtabula County

officials, officers, agents, employees, contractors, subcontractors and volunteers. Further, selected Respondents shall be required to coordinate their implementation(s) with all other selected Respondents and all other projects that are being undertaken by Ashtabula County. If any problem or difficulty should arise regarding such attempts at cooperation and coordination, Ashtabula County shall be immediately informed and will determine the way the parties are to proceed.

SECTION VIII: OTHER REQUIREMENTS

INSURANCE REQUIREMENTS

Worker's Compensation Insurance - The ISP contractor shall provide Worker's Compensation Insurance where required and shall accept full responsibility for the payment of premiums for Worker's Compensation Insurance and Social Security, as well as income tax withholding and any other taxes or payroll deductions required by law for its employees who are performing services related to the project.

General Liability & Property Damage Insurance

The ISP contractor will provide and maintain comprehensive general liability and property damage insurance in the minimum amount of \$250,000.00 per person for injury and death in a single occurrence; \$1,000,000.00 per occurrence for injury or death of more than one (1) person in a single occurrence; and \$500,000.00 for a single occurrence of property damage, and which shall be endorsed to protect the commonwealth.

Flood Insurance

If the project is wholly or partially within a floodplain, proof of sufficient flood insurance coverage must be provided. In any case, a project is required to provide a copy of a floodplain map of the project area, with the project site being delineated thereon.

Identify Ashtabula County as an Additional Insured: The County shall be listed on the above insurance policies as an additional insured. Upon request, the Grantee shall furnish proof of insurance as required by this section to the County Clerk.

FEDERAL & APPALACHIAN REGIONAL COMMISSION (ARC) COMPLIANCE GUIDELINES

DAVIS BACON ACT (Federal Wages)

The ISP Partner and any of its sub-contractors (if any) shall comply, as applicable, with the provisions of the Davis Bacon Act (40 U.S.C. §§276a to 276a- 7), the Copeland Act (40 U.S.C. §276c and 18 U.S.C. §874), and the Contract Work Hours and Safety Standards Act (40 U.S.C. §§327-333) regarding labor standards for federally assisted construction sub agreements.

Please see Appendix E for the Davis Bacon Prevailing Wage Rates that are effective on the release date of this RFP.

BUY AMERICAN ACT

As required by the Buy American provision, all products must be of domestic origin as required by 7 CFR Part 210.21(d). (210.21(d)).

Exceptions to the Buy American provision should be used as a last resort; however, an alternative or exception may be approved upon request. To be considered for the alternative or exception, the request must be submitted in writing to a designated official, a minimum of 30 day(s) in advance of delivery.

The request must include the:

- a) Alternative substitute(s) that are domestic and meet the required specifications:
 - i. Price of the domestic alternative substitute(s); and
 - ii. Availability of the domestic alternative substitute(s) in relation to the quantity ordered.

- b) Reason for exception: limited/lack of availability or price (include price):
 - (i) Price of the domestic product; and
 - (ii) Price of the non-domestic product that meets the required specification of the domestic product

AMERICANS WITH DISABILITIES ACT (ADA)

The ISP contractor agrees to comply with the General Prohibitions Against Discrimination, 28 C.F.R. § 35.130, and all other regulations promulgated under Title II of The Americans with Disabilities Act which are applicable to all benefits, services, programs, and activities provided by the commonwealth through contracts.

Will comply with all Federal statutes relating to nondiscrimination. These include but are not limited to:

- a) Title VI of the Civil Rights Act of 1964 (P.L. 88-352) which prohibits discrimination on the basis of race, color or national origin;
- b) Title IX of the Education Amendments of 1972, as amended (20 U.S.C. §§1681 1683 and 1685-1686) which prohibits discrimination on the basis of sex;
- c) Section 504 of the Rehabilitation Act of 1973. as amended (29 U.S.C. §794). which prohibits discrimination on the basis of handicaps;
- d) the Age Discrimination Act of 1975. As amended (42 U.S.C. §§6101-6107). which prohibits discrimination on the basis of age;
- e) the Drug Abuse Office and Treatment Act of 1972 (P.L. 92-255). As amended, relating to nondiscrimination on the basis of drug abuse;
- f) Comprehensive Alcohol Abuse and Alcoholism Prevention. Treatment and Rehabilitation Act of 1970 (P.L. 91-616). as amended, relating to nondiscrimination on the basis of alcohol abuse or alcoholism;
- g) Title VIII of the Civil Rights Act of 1968 (42 U.S.C. §§3601 et seq.). as amended, relating to nondiscrimination in the sale, rental or financing of housing;
- i) any other nondiscrimination provisions in the specific statute(s) under which application for Federal assistance is being made; and the requirements of any other nondiscrimination statute(s) which may apply to the use of the federal funds.

Other Requirements Upon Award of the Contract

For the purposes of initiating the required Environmental Review process, no later than 45 days after award of the contract, the winning ISP will provide the "high level design" (schematic diagram) showing design components of the system including, but not limited to:

- a) Physical configuration of the system and all potential residential and commercial hookups.
- b) Proposed new construction locations showing existing property and rights of way lines.
- c) A schedule listing all vertical assets being used, which shall include existing or proposed and if it is ISP owned or acquired by lease to gain access.
- d) Proposed final design and construction schedules

APPENDIX A
ISP RESPONDENT PROPOSAL

Company NAME: _____

ADDRESS: _____

TELEPHONE: _____

REPRESENTATIVE: _____

Please answer the questions below for project proposal.

Project Area:

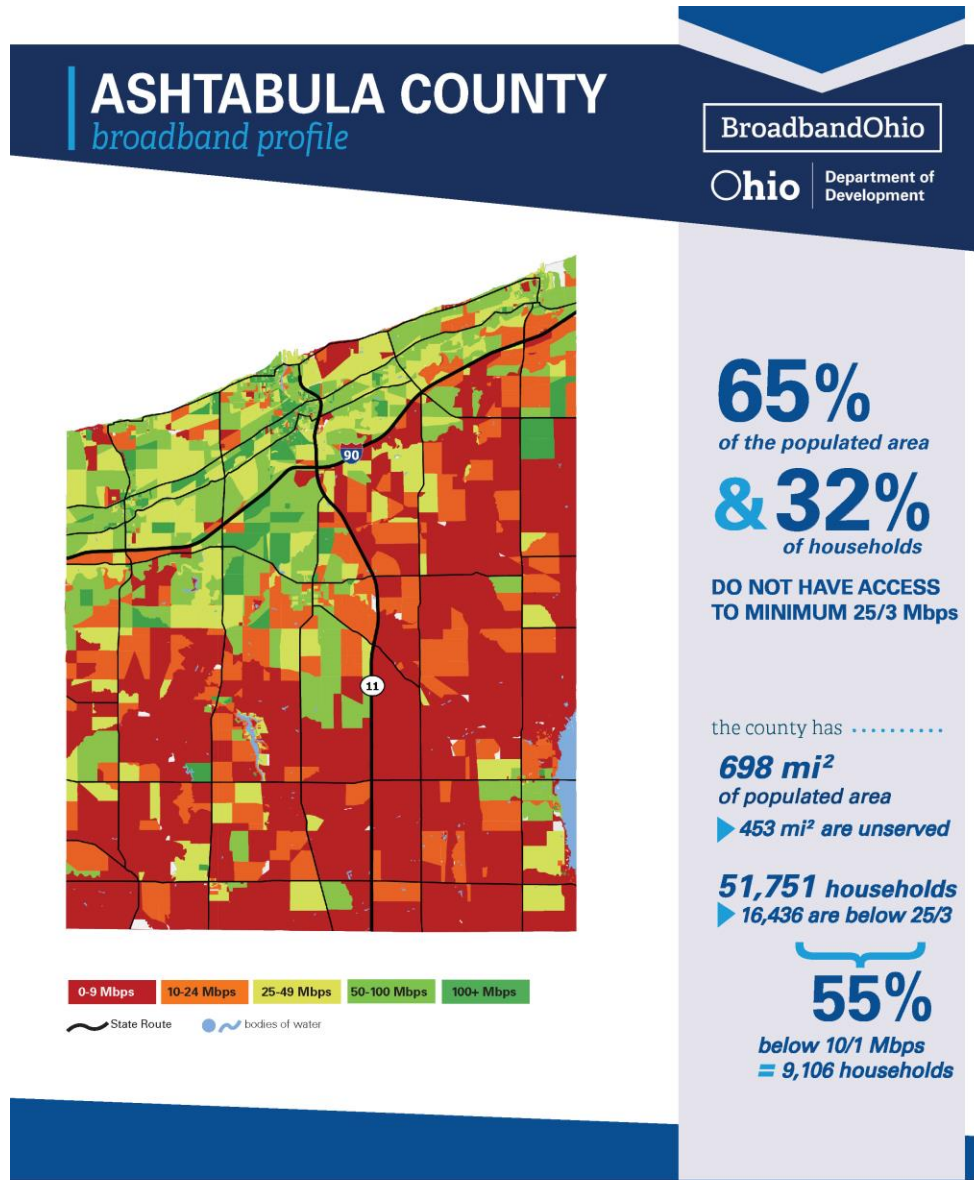
- Number of customers to be served _____
- Speed of service to be provided _____
- Amount of ISP other investment _____
- Consumer pricing of service _____
- Service outside target area Yes___No___ Est #: _____

I, _____, an authorized representative of the above indicated firm, have reviewed, and understand the Rural Broadband Deployment in Ashtabula County's Request for Proposal, and I/we am/are prepared to provide the required services for the above costs.

Signature: _____ Date: _____

APPENDIX B
INVESTMENT AREAS

Current areas that lack the federal minimum level of coverage are indicated below in red and orange:



This map is based on a rating system developed by Reid Consulting Group, LLC. Data sources include Ookla Speedtest Intelligence® data licensed by InnovateOhio from the State of Ohio for the months of February 2020 through August 2021, carrier filings of available speeds with the FCC (Form 477), carrier reports of actual broadband deployments to USAC (HUBB), RDOF Phase 1 eligibility and E-911/LBRS household locations.

COUNTY is specifically looking at investment in the Townships of Williamsfield, Wayne, Colebrook, Orwell, Windsor, Hartgrove, Rome, Dorset, Denmark, and Monroe, though other areas may be included provided that they are not currently receiving coverage at federal minimum levels.

APPENDIX C
SUB-CONTRACTORS

FOR KNOWN SUBCONTRACTORS

Name of Sub-contractor	Contract Work Types (Business of Profession)	Approximate Dollar Amount	MBE/WBE?

FOR YET KNOWN SUBCONTRACTORS

Contract Work Type (Business of Profession)	Approximate Dollar Amount

I, [REDACTED], an authorized representative of the above indicated firm, have reviewed, and understand the Rural Broadband Deployment in Ashtabula County's Request for Proposal, and I/we am/are prepared to provide the required services for the above costs.

Signature: [REDACTED] Date: _____

APPENDIX D
INTENTIONALLY OMITTED

APPENDIX E
DAVIS BACON PREVAILING WAGES

See attached.

"General Decision Number: OH20230001 02/03/2023

Superseded General Decision Number: OH20220001

State: Ohio

Construction Types: Heavy and Highway

Counties: Ohio Statewide.

Heavy and Highway Construction Projects

Note: Contracts subject to the Davis-Bacon Act are generally required to pay at least the applicable minimum wage rate required under Executive Order 14026 or Executive Order 13658. Please note that these Executive Orders apply to covered contracts entered into by the federal government that are subject to the Davis-Bacon Act itself, but do not apply to contracts subject only to the Davis-Bacon Related Acts, including those set forth at 29 CFR 5.1(a)(2)-(60).

<p>If the contract is entered into on or after January 30, 2022, or the contract is renewed or extended (e.g., an option is exercised) on or after January 30, 2022:</p>	<ul style="list-style-type: none"> . Executive Order 14026 generally applies to the contract. . The contractor must pay all covered workers at least \$16.20 per hour (or the applicable wage rate listed on this wage determination, if it is higher) for all hours spent performing on the contract in 2023.
<p>If the contract was awarded on or between January 1, 2015 and January 29, 2022, and the contract is not renewed or extended on or after January 30, 2022:</p>	<ul style="list-style-type: none"> . Executive Order 13658 generally applies to the contract. . The contractor must pay all covered workers at least \$12.15 per hour (or the applicable wage rate listed on this wage determination, if it is higher) for all hours spent performing on that contract in 2023.

The applicable Executive Order minimum wage rate will be adjusted annually. If this contract is covered by one of the Executive Orders and a classification considered necessary for performance of work on the contract does not appear on this wage determination, the contractor must still submit a conformance request.

Additional information on contractor requirements and worker protections under the Executive Orders is available at <http://www.dol.gov/whd/govcontracts>.

Modification Number	Publication Date
0	01/06/2023
1	02/03/2023

BROH0001-001 06/01/2021

DEFIANCE, FULTON (Excluding Fulton, Amboy & Swan Creek Townships), HENRY (Excluding Monroe, Bartlow, Liberty, Washington, Richfield, Marion, Damascus & Townships & that part of Harrison Township outside corporate limits of city of Napoleon), PAULDING, PUTNAM and WILLIAMS COUNTIES

	Rates	Fringes
Bricklayer, Stonemason.....	\$ 30.40	17.55

BROH0001-004 06/01/2021

	Rates	Fringes
CEMENT MASON/CONCRETE FINISHER...	\$ 30.40	17.55

BROH0003-002 06/01/2021

FULTON (Townships of Amboy, Swan Creek & Fulton), HENRY (Townships of Washington, Damascus, Richfield, Bartlow, Liberty, Harrison, Monroe, & Marion), LUCAS and WOOD (Townships of Perrysburg, Ross, Lake, Troy, Freedom, Montgomery, Webster, Center, Portage, Middleton, Plain, Liberty, Henry, Washington, Weston, Milton, Jackson & Grand Rapids) COUNTIES

	Rates	Fringes
Bricklayer, Stonemason.....	\$ 30.40	17.55

BROH0005-003 06/01/2020

CUYAHOGA, LORAIN & MEDINA (Hinckley, Granger, Brunswick, Liverpool, Montville, York, Homer, Harrisville, Chatham, Litchfield & Spencer Townships and the city of Medina)

	Rates	Fringes
BRICKLAYER		
BRICKLAYERS; CAULKERS;		
CLEANERS; POINTERS; &		
STONEMASONS.....	\$ 36.64	17.13
SANDBLASTERS.....	\$ 36.39	17.13
SEWER BRICKLAYERS & STACK		
BUILDERS.....	\$ 36.64	17.13
SWING SCAFFOLDS.....	\$ 37.14	17.13

BROH0006-005 05/01/2022

CARROLL, COLUMBIANA (Knox, Butler, West & Hanover Townships), STARK & TUSCARAWAS

	Rates	Fringes
Bricklayer, Stonemason.....	\$ 30.76	19.07

BROH0007-002 06/01/2021

LAWRENCE

	Rates	Fringes
Bricklayer, Stonemason.....	\$ 30.40	17.55

BROH0007-005 06/01/2021		

PORTAGE & SUMMIT

	Rates	Fringes
BRICKLAYER.....	\$ 30.40	17.55

BROH0007-010 06/01/2017		

PORTAGE & SUMMIT

	Rates	Fringes
MASON - STONE.....	\$ 28.65	14.55

BROH0008-001 06/01/2021		

COLUMBIANA (Salem, Perry, Fairfield, Center, Elk Run, Middleton, & Unity Townships and the city of New Waterford), MAHONING & TRUMBULL

	Rates	Fringes
BRICKLAYER.....	\$ 30.40	17.55

BROH0009-002 06/01/2021		

BELMONT & MONROE COUNTIES and the Townships of Warren & Mt. Pleasant and the Village of Dillonvale in JEFFERSON COUNTY

	Rates	Fringes
Bricklayer, Stonemason.....	\$ 30.40	17.55
Refractory.....	\$ 31.45	19.01

BROH0010-002 06/01/2021		

COLUMBIANA (St. Clair, Madison, Wayne, Franklin, Washington, Yellow Creek & Liverpool Townships) & JEFFERSON (Brush Creek & Saline Townships)

	Rates	Fringes
Bricklayer, Stonemason.....	\$ 30.40	17.55

BROH0014-002 06/01/2021		

HARRISON & JEFFERSON (Except Mt. Pleasant, Warren, Brush Creek, Saline & Salineville Townships & the Village of Dillonvale)

	Rates	Fringes
Bricklayer, Stonemason.....	\$ 30.40	17.55

BROH0016-002 06/01/2021		

ASHTABULA, GEAUGA, and LAKE COUNTIES

	Rates	Fringes
Bricklayer, Stonemason.....	\$ 30.40	17.55

BROH0018-002 06/01/2021		

BROWN, BUTLER, CLERMONT, HAMILTON, PREBLE (Gasper, Dixon, Israel, Lanier, Somers & Gratis Townships) & WARREN COUNTIES:

	Rates	Fringes
Bricklayer, Stonemason.....	\$ 30.40	17.55

BROH0022-004 06/01/2021		

CHAMPAIGN, CLARK, CLINTON, DARKE, GREENE, HIGHLAND, LOGAN, MIAMI, MONTGOMERY, PREBLE (Jackson, Monroe, Harrison, Twin, Jefferson & Washington Townships) and SHELBY COUNTIES

	Rates	Fringes
Bricklayer, Stonemason.....	\$ 30.40	17.55

BROH0032-001 06/01/2021		

GALLIA & MEIGS

	Rates	Fringes
Bricklayer, Stonemason.....	\$ 30.40	17.55

BROH0035-002 06/01/2021		

ALLEN, AUGLAIZE, MERCER and VAN WERT COUNTIES

	Rates	Fringes
Bricklayer, Stonemason.....	\$ 30.40	17.55

BROH0039-002 06/01/2021		

ADAMS & SCIOTO

	Rates	Fringes
Bricklayer, Stonemason.....	\$ 30.40	17.55

BROH0040-003 06/01/2021		

ASHLAND, CRAWFORD, HARDIN, HOLMES, MARION, MORROW, RICHLAND, WAYNE and WYANDOT (Except Crawford, Ridge, Richland & Tymochtee Townships) COUNTIES

	Rates	Fringes
Bricklayer, Stonemason.....	\$ 31.93	22.54

FOOTNOTE: Layout Man and Sawman rate: \$1.00 per hour above journeyman rate.

Free standing stack work ground level to top of stack;

Sandblasting and laying of carbon masonry material in swing stage and/or scaffold; Ramming and spading of plastics and gunniting: \$1.50 per hour above journeyman rate.
""Hot"" work: \$2.50 above journeyman rate.

BROH0044-002 06/01/2021

Rates Fringes

Bricklayer, Stonemason
COSHOCOTON, FAIRFIELD,
GUERNSEY, HOCKING, KNOX,
KICKING, MORGAN,
MUSKINGUM, NOBLE (Beaver,
Buffalo, Seneca & Wayne
Townships) & PERRY
COUNTIES:.....\$ 30.40 17.55

BROH0045-002 06/01/2021

FAYETTE, JACKSON, PIKE, ROSS and VINTON COUNTIES

Rates Fringes

Bricklayer, Stonemason.....\$ 30.40 17.66

BROH0046-002 06/01/2021

ERIE, HANCOCK, HURON, OTTAWA, SANDUSKY, SENECA, WOOD (Perry & Bloom Townships) and WYANDOT (Tymochtee, Crawford, Ridge & Richland Townships) COUNTIES & the Islands of Lake Erie north of Sandusky

Rates Fringes

Bricklayer, Stonemason.....\$ 30.40 17.55

FOOTNOTE: Layout Man and Sawman rate: \$1.00 per hour above journeyman rate.
Free standing stack work ground level to top of stack;
Sandblasting and laying of carbon masonry material in swing stage and/or scaffold; Ramming and spading of plastics and gunniting: \$1.50 per hour above journeyman rate.
""Hot"" work: \$2.50 above journeyman rate.

BROH0052-001 06/01/2021

ATHENS COUNTY

Rates Fringes

Bricklayer, Stonemason.....\$ 30.40 17.55

BROH0052-003 06/01/2021

NOBLE (Brookfield, Noble, Center, Sharon, Olive, Enoch, Stock, Jackson, Jefferson & Elk Townships) and WASHINGTON COUNTIES

Rates Fringes

Bricklayer, Stonemason.....\$ 30.40 17.55

BROH0055-003 06/01/2021

DELAWARE, FRANKLIN, MADISON, PICKAWAY and UNION COUNTIES

	Rates	Fringes
Bricklayer, Stonemason.....	\$ 30.40	17.55

CARP0003-004 05/01/2017

MAHONING & TRUMBULL

	Rates	Fringes
CARPENTER.....	\$ 26.20	17.42

CARP0069-003 05/01/2017

CARROLL, STARK, TUSCARAWAS & WAYNE

	Rates	Fringes
CARPENTER.....	\$ 25.98	15.98

CARP0069-006 05/01/2017

COSHOCTON, HOLMES, KNOX & MORROW

	Rates	Fringes
CARPENTER.....	\$ 24.04	15.29

CARP0171-002 05/01/2019

BELMONT, COLUMBIANA, HARRISON, JEFFERSON & MONROE

	Rates	Fringes
CARPENTER.....	\$ 27.37	20.02

CARP0200-002 05/01/2021

ADAMS, ATHENS, DELAWARE, FAIRFIELD, FAYETTE, FRANKLIN, GALLIA,
GUERNSEY, HIGHLAND, HOCKING, JACKSON, LAWRENCE, LICKING,
MADISON, MARION, MEIGS, MORGAN, MUSKINGUM, NOBLE, PERRY,
PICKAWAY, PIKE, ROSS, SCIOTO, UNION, VINTON and WASHINGTON
COUNTIES

	Rates	Fringes
CARPENTER.....	\$ 30.28	20.08
Diver.....	\$ 39.41	10.40
PILEDRIVERMAN.....	\$ 30.28	20.08

CARP0248-005 07/01/2008

LUCAS & WOOD

	Rates	Fringes
CARPENTER.....	\$ 27.27	14.58

CARP0248-008 07/01/2008

	Rates	Fringes
CARPENTER DEFIANCE, FULTON, HANCOCK, HENRY, PAULDING & WILLIAMS COUNTIES.....	\$ 23.71	13.28

CARP0254-002 05/01/2017

ASHTABULA, CUYAHOGA, GEAUGA & LAKE

	Rates	Fringes
CARPENTER.....	\$ 32.40	16.97

CARP0372-002 05/01/2016

ALLEN, AUGLAIZE, HARDIN, MERCER, PUTNAM & VAN WERT

	Rates	Fringes
CARPENTER.....	\$ 24.54	18.21

CARP0639-003 05/01/2017

MEDINA, PORTAGE & SUMMIT

	Rates	Fringes
CARPENTER.....	\$ 30.42	16.99

CARP0735-002 05/01/2019

ASHLAND, ERIE, HURON, LORAIN & RICHLAND

	Rates	Fringes
CARPENTER.....	\$ 26.30	17.91

CARP1311-001 05/01/2017

BROWN, BUTLER, CHAMPAIGN, CLARK, CLERMONT, CLINTON, DARKE,
GREENE, HAMILTON, LOGAN, MIAMI, MONTGOMERY, PREBLE, SHELBY &
WARREN

	Rates	Fringes
Carpenter & Piledrivermen.....	\$ 29.34	15.95
Diver.....	\$ 40.58	9.69

CARP1393-002 07/01/2008

CRAWFORD, DEFIANCE, FULTON, HANCOCK, HENRY, LUCAS, OTTAWA,
PAULDING, SANDUSKY, SENECA, WILLIAMS & WOOD

	Rates	Fringes
Piledrivermen & Diver's Tender...	\$ 27.30	16.05

DIVERS - \$250.00 per day

CARP1393-003 07/01/2008

ALLEN, AUGLAIZE, HARDIN, MERCER, PUTNAM, VAN WERT & WYANDOT

	Rates	Fringes
Piledrivermen & Diver's Tender...	\$ 25.15	15.92

DIVERS - \$250.00 per day

CARP1871-006 05/01/2017

BELMONT, HARRISON, & MONROE

	Rates	Fringes
Diver, Wet.....	\$ 48.11	17.33
Piledrivermen; Diver, Dry.....	\$ 32.07	17.33

CARP1871-008 05/01/2017

ASHLAND, ASHTABULA, CUYAHOGA, ERIE, GEAUGA, HURON, LAKE, LORAIN, MEDINA, PORTAGE, RICHLAND & SUMMIT

	Rates	Fringes
Diver, Wet.....	\$ 45.80	18.84
Piledrivermen; Diver, Dry.....	\$ 30.53	18.84

CARP1871-014 05/01/2017

CARROLL, STARK, TUSCARAWAS & WAYNE

	Rates	Fringes
Diver, Wet.....	\$ 38.34	16.95
Piledrivermen; Diver, Dry.....	\$ 25.56	16.95

CARP1871-015 05/01/2017

COSHOCTON, HOLMES, KNOX & MORROW

	Rates	Fringes
Diver, Wet.....	\$ 37.34	16.07
Piledrivermen; Diver, Dry.....	\$ 24.89	16.07

CARP1871-017 05/01/2017

MAHONING & TRUMBULL

	Rates	Fringes
Diver, Wet.....	\$ 40.65	17.62
Piledrivermen; Diver, Dry.....	\$ 27.10	17.62

CARP2235-012 01/01/2014

COLUMBIANA & JEFFERSON

	Rates	Fringes
PILEDRIVERMAN.....	\$ 31.74	16.41

CARP2239-001 07/01/2008

CRAWFORD, OTTAWA, SANDUSKY, SENECA & WYANDOT

	Rates	Fringes
CARPENTER.....	\$ 23.71	13.28

ELEC0008-002 05/23/2022		

DEFIANCE, FULTON, HANCOCK, HENRY, LUCAS, OTTAWA, PAULDING, PUTNAM, SANDUSKY, SENECA, WILLIAMS & WOOD

	Rates	Fringes
CABLE SPLICER.....	\$ 38.98	18.96
ELECTRICIAN.....	\$ 44.79	4.5%+21.61

* ELEC0032-003 12/05/2022		

ALLEN, AUGLAIZE, HARDIN, LOGAN, MERCER, SHELBY, VAN WERT & WYANDOT (Crawford, Jackson, Marseilles, Mifflin, Ridgeland, Ridge & Salem Townships)

	Rates	Fringes
ELECTRICIAN.....	\$ 34.67	21.48

ELEC0038-002 04/25/2022		

CUYAHOGA, GEAUGA (Bainbridge, Chester & Russell Townships) & LORAIN (Columbia Township)

	Rates	Fringes
ELECTRICIAN Excluding Sound & Communications Work.....	\$ 40.88	22.75

FOOTNOTES;

- a. 6 Paid Holidays: New Year's Day; Memorial Day; July 4th; Labor Day; Thanksgiving Day; & Christmas Day
- b. 1 week's paid vacation for 1 year's service; 2 weeks' paid vacation for 2 or more years' service

ELEC0038-008 04/25/2022

CUYAHOGA, GEAUGA (Bainbridge, Chester & Russell Townships) & LORAIN (Columbia Township)

	Rates	Fringes
Sound & Communication Technician Communications Technician...	\$ 29.30	13.29
Installer Technician.....	\$ 28.05	13.25

FOOTNOTES;

- a. 6 Paid Holidays: New Year's Day; Memorial Day; July 4th; Labor Day; Thanksgiving Day; & Christmas Day
- b. 1 week's paid vacation for 1 year's service; 2 weeks' paid

vacation for 2 or more years' service

 ELEC0064-003 11/28/2022

COLUMBIANA (Butler, Fairfield, Perry, Salem & Unity Townships)
 MAHONING (Austintown, Beaver, Berlin, Boardman, Canfield,
 Ellsworth, Coitsville, Goshen, Green, Jackson, Poland,
 Springfield & Youngstown Townships), & TRUMBULL (Hubbard &
 Liberty Townships)

	Rates	Fringes
ELECTRICIAN.....	\$ 36.10	18.91

 ELEC0071-001 01/01/2019

ASHLAND, CHAMPAIGN, CLARK, COSHOCTON, CRAWFORD, DELAWARE,
 FAIRFIELD, FAYETTE, FRANKLIN, GUERNSEY, HIGHLAND, HOCKING,
 JACKSON (Coal, Jackson, Liberty, Milton, Washington & Wellston
 Townships), KNOX, LICKING, MADISON, MARION, MONROE, MORGAN,
 MORROW, MUSKINGUM, NOBLE, PERRY, PICKAWAY, PIKE (Beaver,
 Benton, Jackson, Mifflin, Pebble, Peepee, Perry & Seal
 Townships), RICHLAND, ROSS, TUSCARAWAS (Auburn, Bucks, Clay,
 Jefferson, Oxford, Perry, Salem, Rush, Washington & York
 Townships), UNION, VINTON (Clinton, Eagle, Elk, Harrison,
 Jackson, Richland & Swan Townships), and WASHINGTON COUNTIES

	Rates	Fringes
Line Construction		
Equipment Operators.....	\$ 33.62	13.40
Groundmen.....	\$ 24.17	11.32
Linemen & Cable Splicers....	\$ 38.27	14.42

 ELEC0071-004 01/01/2019

AUGLAIZE, CLINTON, DARKE, GREENE, LOGAN, MERCER, MIAMI,
 MONTGOMERY, PREBLE, and SHELBY COUNTIES

	Rates	Fringes
Line Construction		
Equipment Operator.....	\$ 33.62	13.40
Groundman.....	\$ 24.17	11.32
Lineman & Cable Splicers....	\$ 38.27	14.42

 ELEC0071-005 12/31/2018

ASHTABULA, CUYAHOGA, GEAUGA, LAKE & LORAIN

	Rates	Fringes
LINE CONSTRUCTION: Equipment Operator		
DOT/Traffic Signal & Highway Lighting Projects...\$	32.44	14.10
Municipal Power/Transit Projects.....\$	40.10	16.42
LINE CONSTRUCTION: Groundman		
DOT/Traffic Signal & Highway Lighting Projects...\$	25.06	12.26

Municipal Power/Transit Projects.....	\$ 31.19	14.11
LINE CONSTRUCTION:		
Linemen/Cable Splicer DOT/Traffic Signal & Highway Lighting Projects...	\$ 36.13	15.03
Municipal Power/Transit Projects.....	\$ 44.56	17.58

ELEC0071-008 01/01/2019

COLUMBIANA, MAHONING, and TRUMBULL COUNTIES

	Rates	Fringes
Line Construction		
Equipment Operator.....	\$ 33.62	13.40
Groundman.....	\$ 24.17	11.32
Lineman & Cable Splicers....	\$ 38.27	14.42

ELEC0071-010 01/01/2019

BELMONT, CARROLL, HARRISON, HOLMES, JEFFERSON, MEDINA, PORTAGE,
STARK, SUMMIT, and WAYNE COUNTIES

	Rates	Fringes
Line Construction		
Equipment Operator.....	\$ 33.62	13.40
Groundman.....	\$ 24.17	11.32
Lineman & Cable Splicers....	\$ 38.27	14.42

ELEC0071-013 01/01/2019

BROWN, BUTLER, CLERMONT, HAMILTON, and WARREN COUNTIES

	Rates	Fringes
Line Construction		
Equipment Operator.....	\$ 33.62	13.40
Groundman.....	\$ 24.17	11.32
Lineman & Cable Splicers....	\$ 38.27	14.42

ELEC0071-014 01/01/2019

ADAMS, ATHENS, GALLIA, JACKSON (Bloomfield, Franklin, Hamilton,
Lick, Jefferson, Scioto & Madison Townships), LAWRENCE, MEIGS,
PIKE (Camp Creek, Marion, Newton, Scioto, Sunfish & Union
Townships), SCIOTO & VINTON (Brown, Knox, Madison, Vinton &
Wilkesville Townships)

	Rates	Fringes
Line Construction		
Equipment Operator.....	\$ 33.62	13.40
Groundman.....	\$ 24.17	11.32
Lineman & Cable Splicers....	\$ 38.27	14.42

* ELEC0082-002 12/05/2022

CLINTON, DARKE, GREENE, MIAMI, MONTGOMERY, PREBLE & WARREN
(Wayne, Clear Creek & Franklin Townships)

	Rates	Fringes
ELECTRICIAN.....	\$ 34.25	21.26

* ELEC0082-006 11/29/2021

CLINTON, DARKE, GREENE, MIAMI, MONTGOMERY, PREBLE & WARREN
(Wayne, Clear Creek & Franklin Townships)

	Rates	Fringes
Sound & Communication Technician		
Cable Puller.....	\$ 12.98 **	3.89
Installer/Technician.....	\$ 25.95	12.27

ELEC0129-003 02/28/2022

LORAIN (Except Columbia Township) & MEDINA (Litchfield & Liverpool Townships)

	Rates	Fringes
ELECTRICIAN.....	\$ 37.00	18.23

ELEC0129-004 02/28/2022

ERIE & HURON (Lyme, Ridgefield, Norwalk, Townsend, Wakeman,
Sherman, Peru, Bronson, Hartland, Clarksfield, Norwich,
Greenfield, Fairfield, Fitchville & New London Townships)

	Rates	Fringes
ELECTRICIAN.....	\$ 37.00	18.23

ELEC0141-003 09/01/2019

BELMONT COUNTY

	Rates	Fringes
CABLE SPLICER.....	\$ 30.63	25.87
ELECTRICIAN.....	\$ 30.38	25.87

ELEC0212-003 11/26/2018

BROWN, CLERMONT & HAMILTON

	Rates	Fringes
Sound & Communication Technician.....	\$ 24.35	10.99

ELEC0212-005 06/06/2022

BROWN, CLERMONT, and HAMILTON COUNTIES

	Rates	Fringes
ELECTRICIAN.....	\$ 33.29	21.15

ELEC0245-001 08/29/2022

ALLEN, HARDIN, VAN WERT & WYANDOT (Crawford, Jackson, Marseilles, Mifflin, Richland, Ridge & Salem Townships)

	Rates	Fringes
Line Construction		
Equipment Operator.....	\$ 32.37	26.5%+7.25
Groundman Truck Driver.....	\$ 19.35	7.00+27.25%
Lineman.....	\$ 44.22	7.00+27.25%

FOOTNOTE: a. Half day's Paid Holiday: The last 4 hours of the workday prior to Christmas or New Year's Day

ELEC0245-003 08/29/2022

DEFIANCE, FULTON, HANCOCK, HENRY, HURON, LUCAS, OTTAWA, PAULDING, PUTNAM, SANDUSKY, SENECA, WILLIAMS, and WOOD COUNTIES

	Rates	Fringes
Line Construction		
Cable Splicer.....	\$ 50.85	7.00+27.25%
Groundman/Truck Driver.....	\$ 19.35	7.00+27.25%
Heli-arc Welding.....	\$ 40.76	7.00+27.25%
Lineman.....	\$ 44.22	7.00+27.25%
Operator - Class 1.....	\$ 35.38	7.00+27.25%
Operator - Class 2.....	\$ 28.32	7.00+27.25%
Traffic Signal & Lighting Technician.....	\$ 39.80	7.00+27.25%

FOOTNOTE: a. 6 Observed Holidays: New Year's Day; Memorial Day; Independence Day; Labor Day; Thanksgiving Day; & Christmas Day. Employees who work on a holiday shall be paid at a rate of double their applicable classified straight-time rates for the work performed on such holiday.

ELEC0245-004 08/29/2022

ERIE COUNTY

	Rates	Fringes
Line Construction		
Cable Splicer.....	\$ 49.14	26.75%+6.75
Cablesplicer.....	\$ 50.85	7.00+27.25%
Groundman/Truck Driver.....	\$ 19.35	7.00+27.25%
Lineman.....	\$ 44.22	7.00+27.25%
Operator - Class 1.....	\$ 35.38	7.00+27.25%
Operator - Class 2.....	\$ 28.32	7.00+27.25%

FOOTNOTE: a. 6 Observed Holidays: New Year's Day; Memorial Day; Independence Day; Labor Day; Thanksgiving Day; & Christmas Day. Employees who work on a holiday shall be paid at a rate of double their applicable classified straight-time rates for the work performed on such holiday.

ELEC0246-001 11/01/2021

	Rates	Fringes
ELECTRICIAN.....	\$ 39.50	77%+31.62

FOOTNOTE: a. 1 1/2 Paid Holidays: The last scheduled workday prior to Christmas & 4 hours on Good Friday.

 ELEC0306-005 05/28/2018

MEDINA (Brunswick, Chatham, Granger, Guilford, Harrisville, Hinckley, Homer, Lafayette, Medina, Montville, Sharon, Spencer, Wadsworth, Westfield & York Townships), PORTAGE (Atwater, Aurora, Brimfield, Deerfield, Franklin, Mantua, Randolph, Ravenna, Rootstown, Shalersville, Streetsboro & Suffield Townships), SUMMIT & WAYNE (Baughman, Canaan, Chester, Chippewa, Congress, Green, Milton, & Wayne Townships)

	Rates	Fringes
CABLE SPLICER.....	\$ 36.87	16.56
ELECTRICIAN.....	\$ 34.54	5%+18.06

 ELEC0317-002 05/30/2022

GALLIA & LAWRENCE

	Rates	Fringes
CABLE SPLICER.....	\$ 32.68	18.13
ELECTRICIAN.....	\$ 35.85	28.25

 ELEC0540-005 12/27/2021

CARROLL (Northern half, including Fox, Harrison, Rose & Washington Townships), COLUMBIANA (Knox Township), HOLMES, MAHONING (Smith Township), STARK, TUSCARAWAS (North of Auburn, Clay, Rush & York Townships), and WAYNE (South of Baughman, Chester, Green & Wayne Townships) COUNTIES

	Rates	Fringes
ELECTRICIAN.....	\$ 35.28	22.63

 * ELEC0573-003 11/28/2022

ASHTABULA (Colebrook, Wayne, Williamsfield, Orwell & Windsor Townships), GEAUGA (Auburn, Middlefield, Parkman & Troy Townships), MAHONING (Milton Township), PORTAGE (Charlestown, Edinburg, Freedom, Hiram, Nelson, Palmyra, Paris & Windham Townships), and TRUMBULL (Except Liberty & Hubbard Townships)

	Rates	Fringes
ELECTRICIAN.....	\$ 38.70	20.94

 ELEC0575-001 11/29/2021

ADAMS, FAYETTE, HIGHLAND, HOCKING, JACKSON (Bloomfield, Franklin, Hamilton, Jefferson, Lick, Madison, Scioto, Coal, Jackson, Liberty, Milton & Washington Townships), PICKAWAY (Deer Creek, Perry, Pickaway, Salt Creek & Wayne Townships),

PIKE (Beaver, Benton, Jackson, Mifflin, Pebble, PeePee, Perry, Seal, Camp Creek, Newton, Scioto, Sunfish, Union & Marion Townships), ROSS, SCIOTO & VINTON (Clinton, Eagle, Elk, Harrison, Jackson, Richland & Swan Townships)

	Rates	Fringes
ELECTRICIAN.....	\$ 35.00	19.76

ELEC0648-001 08/29/2022

BUTLER and WARREN COUNTIES (Deerfield, Hamilton, Harlan, Massie, Salem, Turtle Creek, Union & Washington Townships)

	Rates	Fringes
CABLE SPLICER.....	\$ 30.50	18.23
ELECTRICIAN.....	\$ 33.00	21.44

ELEC0673-004 05/30/2022

ASHTABULA (Excluding Orwell, Colebrook, Williamsfield, Wayne & Windsor Townships), GEAUGA (Burton, Chardon, Claridon, Hambden, Huntsburg, Montville, Munson, Newbury & Thompson Townships) and LAKE COUNTIES

	Rates	Fringes
CABLE SPLICER.....	\$ 33.81	21.47
ELECTRICIAN.....	\$ 34.71	23.36

ELEC0683-002 05/30/2022

CHAMPAIGN, CLARK, DELAWARE, FAIRFIELD, FRANKLIN, MADISON, PICKAWAY (Circleville, Darby, Harrison, Jackson, Madison, Monroe, Muhlenberg, Scioto, Walnut & Washington Townships), and UNION COUNTIES

	Rates	Fringes
CABLE SPLICER.....	\$ 37.50	23.15
ELECTRICIAN.....	\$ 36.50	23.15

ELEC0688-003 05/30/2022

ASHLAND, CRAWFORD, HURON (Richmond, New Haven, Ripley & Greenwich Townships), KNOX (Liberty, Clinton, Union, Howard, Monroe, Middleberry, Morris, Wayne, Berlin, Pike, Brown & Jefferson Townships), MARION, MORROW, RICHLAND and WYANDOT (Sycamore, Crane, Eden, Pitt, Antrim & Tymochtee Townships) COUNTIES

	Rates	Fringes
ELECTRICIAN.....	\$ 32.30	21.83

ELEC0972-002 06/01/2021

ATHENS, MEIGS, MONROE, MORGAN, NOBLE, VINTON (Brown, Knox, Madison, Vinton & Wilkesville Townships), and WASHINGTON

COUNITIES

	Rates	Fringes
CABLE SPLICER.....	\$ 37.35	27.81
ELECTRICIAN.....	\$ 34.30	27.62

ELEC1105-001 05/30/2022		

COSHOCTON, GUERNSEY, KNOX (Jackson, Clay, Morgan, Miller, Milford, Hilliar, Butler, Harrison, Pleasant & College Townships), LICKING, MUSKINGUM, PERRY, and TUSCARAWAS (Auburn, York, Clay, Jefferson, Rush, Oxford, Washington, Salem, Perry & Bucks Townships) COUNTIES

	Rates	Fringes
ELECTRICIAN.....	\$ 35.25	22.18

ENGI0018-003 05/01/2019		

ASHTABULA, CUYAHOGA, ERIE, GEAUGA, LAKE, LORAIN, MEDINA, PORTAGE, and SUMMIT COUNTIES

	Rates	Fringes
POWER EQUIPMENT OPERATOR		
GROUP 1.....	\$ 38.63	15.20
GROUP 2.....	\$ 38.53	15.20
GROUP 3.....	\$ 37.49	15.20
GROUP 4.....	\$ 36.27	15.20
GROUP 5.....	\$ 30.98	15.20
GROUP 6.....	\$ 38.88	15.20
GROUP 7.....	\$ 39.13	15.20

OPERATING ENGINEER CLASSIFICATIONS

GROUP 1 - Air Compressor on Steel Erection; Barrier Moving Machine; Boiler Operator on Compressor or Generator when mounted on a Rig; Cableway; Combination Concrete Mixer & Tower; Concrete Plant (over 4 yd. Capacity); Concrete Pump; Crane (All Types, Including Boom Truck, Cherry Picker); Crane-Compact, Track or Rubber over 4,000 lbs. capacity; Cranes-Self Erecting, Stationary, Track or Truck (All Configurations); Derrick; Dragline; Dredge (Dipper, Clam or Suction); Elevating Grader or Euclid Loader; Floating Equipment (All Types); Gradall; Helicopter Crew (Operator-Hoist or Winch); Hoe (all types); Hoisting Engine on Shaft or Tunnel Work; Hydraulic Gantry (Lifting System); Industrial-Type Tractor; Jet Engine Dryer (D8 or D9) Diesel Tractor; Locomotive (Standard Gauge); Maintenance Operator Class A; Mixer, Paving (Single or Double Drum); Mucking Machine; Multiple Scraper; Piledriving Machine (All Types); Power Shovel; Prentice Loader; Quad 9 (Double Pusher); Rail Tamper (with auto lifting & aligning device); Refrigerating Machine (Freezer Operation); Rotary Drill, on Caisson work; Rough Terrain Fork Lift with Winch/Hoist; Side-Boom; Slip-Form Paver; Tower Derrick; Tree Shredder; Trench Machine (Over 24" wide); Truck Mounted Concrete Pump; Tug Boat; Tunnel Machine and/or Mining Machine; Wheel Excavator; and Asphalt Plant Engineer (Cleveland District Only).

GROUP 2 - Asphalt Paver; Automatic Subgrader Machine, Self-Propelled (CMI Type); Bobcat Type and/or Skid Steer Loader with Hoe Attachment Greater than 7,000 lbs.; Boring Machine More than 48"; Bulldozer; Endloader; Horizontal Directional Drill (Over 50,000 ft lbs thrust); Hydro Milling Machine; Kolman-type Loader (production type-Dirt); Lead Greaseman; Lighting & Traffic Signal Installation Equipment (includes all groups or classifications); Material Transfer Equipment (Shuttle Buggy) Asphalt; Pettibone-Rail Equipment; Power Grader; Power Scraper; Push Cat; Rotomill (all), Grinders & Planers of All types; Trench Machine (24" wide & under); Vermeer type Concrete Saw; and Maintenance Operators (Portage and Summit Counties Only).

GROUP 3 - A-Frame; Air Compressor on Tunnel Work (low pressure); Asphalt Plant Engineer (Portage and Summit Counties Only); Bobcat-type and/or Skid Steer Loader with or without Attachments; Highway Drills (all types); Locomotive (narrow gauge); Material Hoist/Elevator; Mixer, Concrete (more than one bag capacity); Mixer, one bag capacity (Side Loader); Power Boiler (Over 15 lbs. Pressure) Pump Operator installing & operating Well Points; Pump (4" & over discharge); Roller, Asphalt; Rotovator (lime soil stabilizer); Switch & Tie Tampers (without lifting & aligning device); Utility Operator (Small equipment); Welding Machines; and Railroad Tie Inserter/Remover; Articulating/straight bed end dumps if assigned (minus \$4.00 per hour).

GROUP 4 - Backfiller; Ballast Re-locator; Bars, Joint & Mesh Installing Machine; Batch Plant; Boring Machine Operator (48" or less); Bull Floats; Burlap & Curing Machine; Concrete Plant (capacity 4 yd. & under); Concrete Saw (Multiple); Conveyor (Highway); Crusher; Deckhand; Farm-type Tractor with attachments (highway); Finishing Machine; Fireperson, Floating Equipment (all types); Forklift; Form Trencher; Hydro Hammer expect masonry; Hydro Seeder; Pavement Breaker; Plant Mixer; Post Driver; Post Hole Digger (Power Auger); Power Brush Burner; Power Form Handling Equipment; Road Widening Trencher; Roller (Brick, Grade & Macadam); Self-Propelled Power Spreader; Self-Propelled Power Subgrader; Steam Fireperson; Tractor (Pulling Sheepfoot, Roller or Grader); and Vibratory Compactor with Integral Power.

GROUP 5 - Compressor (Portable, Sewer, Heavy & Highway); Drum Fireperson (Asphalt Plant); Generator; Masonry Fork Lift; Inboard-Outboard Motor Boat Launch; Oil Heater (asphalt plant); Oiler/Helper; Power Driven Heater; Power Sweeper & Scrubber; Pump (under 4" discharge); Signalperson; Tire Repairperson; VAC/ALLS; Cranes - Compact, track or rubber under 4,000 pound capacity; fueling and greasing; and Chainmen.

GROUP 6 - Master Mechanic & Boom from 150 to 180.

GROUP 7 - Boom from 180 and over.

 ENGI0018-004 05/01/2019

ADAMS, ALLEN, ASHLAND, ATHENS, AUGLAIZE, BELMONT, BROWN,
 BUTLER, CARROLL, CHAMPAIGN, CLARK, CLERMONT, CLINTON,

COSHOCTON, CRAWFORD, DARKE, DEFIANCE, DELAWARE, FAIRFIELD, FAYETTE, FRANKLIN, FULTON, GALLIA, GREENE, GUERNSEY, HAMILTON, HANCOCK, HARDIN, HARRISON, HENRY, HIGHLAND, HOCKING, HOLMES, HURON, JACKSON, JEFFERSON, KNOX, LAWRENCE, LICKING, LOGAN, LUCAS, MADISON, MARION, MEIGS, MERCER, MIAMI, MONROE, MONTGOMERY, MORGAN, MORROW, MUSKINGUM, NOBLE, OTTAWA, PAULDING, PERRY, PICKAWAY, PIKE, PREBLE, PUTNAM, RICHLAND, ROSS, SANDUSKY, SCIOTO, SENECA, SHELBY, STARK, TUSCARAWAS, UNION, VAN WERT, VINTON, WARREN, WASHINGTON, WAYNE, WILLIAMS, WOOD, and YANDOT COUNTIES

	Rates	Fringes
POWER EQUIPMENT OPERATOR		
GROUP 1.....	\$ 37.14	15.20
GROUP 2.....	\$ 37.02	15.20
GROUP 3.....	\$ 35.98	15.20
GROUP 4.....	\$ 34.80	15.20
GROUP 5.....	\$ 29.34	15.20
GROUP 6.....	\$ 37.39	15.20
GROUP 7.....	\$ 37.64	15.20

OPERATING ENGINEER CLASSIFICATIONS

GROUP 1 - Air Compressor on Steel Erection; Barrier Moving Machine; Boiler Operator on Compressor or Generator when mounted on a Rig; Cableway; Combination Concrete Mixer & Tower; Concrete Plant (over 4 yd. Capacity); Concrete Pump; Crane (All Types, Including Boom Truck, Cherry Picker); Crane-Compact, Track or Rubber over 4,000 lbs. capacity; Cranes-Self Erecting, Stationary, Track or Truck (All Configurations); Derrick; Dragline; Dredge (Dipper, Clam or Suction); Elevating Grader or Euclid Loader; Floating Equipment (All Types); Gradall; Helicopter Crew (Operator-Hoist or Winch); Hoe (all types); Hoisting Engine on Shaft or Tunnel Work; Hydraulic Gantry (Lifting System); Industrial-Type Tractor; Jet Engine Dryer (D8 or D9) Diesel Tractor; Locomotive (Standard Gauge); Maintenance Operator Class A; Mixer, Paving (Single or Double Drum); Mucking Machine; Multiple Scraper; Piledriving Machine (All Types); Power Shovel; Prentice Loader; Quad 9 (Double Pusher); Rail Tamper (with auto lifting & aligning device); Refrigerating Machine (Freezer Operation); Rotary Drill, on Caisson work; Rough Terrain Fork Lift with Winch/Hoist; Side-Boom; Slip-Form Paver; Tower Derrick; Tree Shredder; Trench Machine (Over 24" wide); Truck Mounted Concrete Pump; Tug Boat; Tunnel Machine and/or Mining Machine; and Wheel Excavator.

GROUP 2 - Asphalt Paver; Automatic Subgrader Machine, Self-Propelled (CMI Type); Bobcat Type and/or Skid Steer Loader with Hoe Attachment Greater than 7,000 lbs.; Boring Machine More than 48"; Bulldozer; Endloader; Hydro Milling Machine; Horizontal Directional Drill (over 50,000 ft. lbs. thrust); Kolman-type Loader (production type-Dirt); Lead Greaseman; Lighting & Traffic Signal Installation Equipment (includes all groups or classifications); Material Transfer Equipment (Shuttle Buggy) Asphalt; Pettibone-Rail Equipment; Power Grader; Power Scraper; Push Cat; Rotomill (all), Grinders & Planers of All types; Trench Machine (24" wide & under); and Vermeer type Concrete Saw.

GROUP 3 - A-Frame; Air Compressor on Tunnel Work (low pressure); Asphalt Plant Engineer; Bobcat-type and/or Skid

Steer Loader with or without Attachments; Highway Drills (all types); Locomotive (narrow gauge); Material Hoist/Elevator; Mixer, Concrete (more than one bag capacity); Mixer, one bag capacity (Side Loader); Power Boiler (Over 15 lbs. Pressure) Pump Operator installing & operating Well Points; Pump (4" & over discharge); Railroad Tie Inserter/Remover; Roller, Asphalt; Rotovator (lime soil stabilizer); Switch & Tie Tampers (without lifting & aligning device); Utility Operator (Small equipment); and Welding Machines; Articulating/straight bed end dumps if assigned (minus \$4.00 per hour.

GROUP 4 - Backfiller; Ballast Re-locator; Bars, Joint & Mesh Installing Machine; Batch Plant; Boring Machine Operator (48" or less); Bull Floats; Burlap & Curing Machine; Concrete Plant (capacity 4 yd. & under); Concrete Saw (Multiple); Conveyor (Highway); Crusher; Deckhand; Farm-type Tractor with attachments (highway); Finishing Machine; Fireperson, Floating Equipment (all types); Fork Lift; Form Trencher; Hydro Hammer except masonry; Hydro Seeder; Pavement Breaker; Plant Mixer; Post Driver; Post Hole Digger (Power Auger); Power Brush Burner; Power Form Handling Equipment; Road Widening Trencher; Roller (Brick, Grade & Macadam); Self-Propelled Power Spreader; Self-Propelled Power Subgrader; Steam Fireperson; Tractor (Pulling Sheepfoot, Roller or Grader); and Vibratory Compactor with Integral Power.

GROUP 5 - Compressor (Portable, Sewer, Heavy & Highway); Drum Fireperson (Asphalt Plant); Generator; Masonary Forklift; Inboard-Outboard Motor Boat Launch; Oil Heater (asphalt plant); Oiler/Helper; Power Driven Heater; Power Sweeper & Scrubber; Pump (under 4" discharge); Signalperson; Tire Repairperson; VAC/ALLS; Cranes - Compact, track or rubber under 4,000 pound capacity; fueling and greasing; and Chainmen.

GROUP 6 - Master Mechanic & Boom from 150 to 180.

GROUP 7 - Boom from 180 and over.

ENGI0066-023 06/01/2017

COLUMBIANA, MAHONING & TRUMBULL COUNTIES

	Rates	Fringes
POWER EQUIPMENT OPERATOR		
ASBESTOS; HAZARDOUS/TOXIC WASTE PROJECTS		
GROUP 1 - A & B.....	\$ 39.23	19.66
ASBESTOS; HAZARDOUS/TOXIC WASTE PROJECTS		
GROUP 2 - A & B.....	\$ 38.90	19.66
ASBESTOS; HAZARDOUS/TOXIC WASTE PROJECTS		
GROUP 3 - A & B.....	\$ 34.64	19.66
ASBESTOS; HAZARDOUS/TOXIC WASTE PROJECTS		
GROUP 4 - A & B.....	\$ 30.70	19.66
ASBESTOS; HAZARDOUS/TOXIC WASTE PROJECTS		
GROUP 5 - A & B.....	\$ 27.30	19.66
HAZARDOUS/TOXIC WASTE		

PROJECTS		
GROUP 1 - C & D.....	\$ 35.96	19.66
HAZARDOUS/TOXIC WASTE		
PROJECTS		
GROUP 2 - C & D.....	\$ 35.66	19.66
HAZARDOUS/TOXIC WASTE		
PROJECTS		
GROUP 3 - C & D.....	\$ 31.76	19.66
HAZARDOUS/TOXIC WASTE		
PROJECTS		
GROUP 4 - C & D.....	\$ 28.14	19.66
HAZARDOUS/TOXIC WASTE		
PROJECTS		
GROUP 5 - C & D.....	\$ 25.03	19.66
ALL OTHER WORK		
GROUP 1.....	\$ 32.69	19.66
ALL OTHER WORK		
GROUP 2.....	\$ 32.42	19.66
ALL OTHER WORK		
GROUP 3.....	\$ 28.87	19.66
ALL OTHER WORK		
GROUP 4.....	\$ 25.58	19.66
ALL OTHER WORK		
GROUP 5.....	\$ 22.75	19.66

GROUP 1 - Rig, Pile Driver or Caisson Type; & Rig, Pile Hydraulic Unit Attached

GROUP 2 - Asphalt Heater Planer; Backfiller with Drag Attachment; Backhoe; Backhoe with Shear attached; Backhoe-Rear Pivotal Swing; Batch Plant-Central Mix Concrete; Batch Plant, Portable concrete; Berm Builder-Automatic; Boat Derrick; Boat-Tug; Boring Machine Attached to Tractor; Bullclam; Bulldozer; C.M.I. Road Builder & Similar Type; Cable Placer & Layer; Carrier-Straddle; Carryall-Scraper or Scoop; Chicago Boom; Compactor with Blade Attached; Concrete Saw (Vermeer or similar type); Concrete Spreader Finisher; Combination, Bidwell Machine; Crane; Crane-Electric Overhead; Crane-Rough Terrain; Crane-Side Boom; Crane-Truck; Crane-Tower; Derrick-Boom; Derrick-Car; Digger-Wheel (Not trencher or road widener); Double Nine; Drag Line; Dredge; Drill-Kenny or Similar Type; Easy Pour Median Barrier Machine (or similar type); Electromatic; Frankie Pile; Gradall; Grader; Gurry; Self-Propelled; Heavy Equipment Robotics Operator/Mechanic; Hoist-Monorail; Hoist-Stationary & Mobile Tractor; Hoist, 2 or 3 drum; Horizontal Directional Drill Operator; Jackall; Jumbo Machine; Kocal & Kuhlman; Land-Seagoing Vehicle; Loader, Elevating; Loader, Front End; Loader, Skid Steer; Locomotive; Mechanic/Welder; Metro Chip Harvester with Boom; Mucking Machine; Paver-Asphalt Finishing Machine; Paver-Road Concrete; Paver-Slip Form (C.M.I. or similar); Place Crete Machine with Boom; Post Driver (Carrier mounted); Power Driven Hydraulic Pump & Jack (When used in Slip Form or Lift Slab Construction); Pump Crete Machine; Regulator-Ballast; Hydraulic Power Unit not attached to Rig for Pile Drillings; Rigs-Drilling; Roto Mill or similar Full Lane (8' Wide & Over); Roto Mill or similar type (Under 8'); Shovel; Slip Form Curb Machine; Speedwing; Spikemaster; Stonecrusher; Tie Puller & Loader; Tie Tamper; Tractor-Double Boom; Tractor with Attachments; Truck-Boom; Truck-Tire; Trench Machine; Tunnel Machine (Mark 21 Java or similar); & Whirley (or similar type)

GROUP 3 - Asphalt Plant; Bending Machine (Pipeline or similar type); Boring machine, Motor Driven; Chip Harvester without Boom; Cleaning Machine, Pipeline Type; Coating Machine, Pipeline Type; Compactor; Concrete Belt Placer; Concrete Finisher; Concrete Planer or Asphalt; Concrete Spreader; Elevator; Fork Lift (Home building only); Fork lift & Lulls; Fork Lift Walk Behind (Hoisting over 1 buck high); Form Line Machine; Grease Truck operator; Grout Pump; Gunnite Machine; Horizontal Directional Drill Locator; Single Drum Hoist with or without Tower; Huck Bolting Machine; Hydraulic Scaffold (Hoisting building materials); Paving Breaker (Self-propelled or Ridden); Pipe Dream; Pot Fireperson (Power Agitated); Refrigeration Plant; Road Widener; Roller; Sasgen Derrick; Seeding Machine; Soil Stabilizer (Pump type); Spray Cure Machine, Self-Propelled; Straw Blower Machine; Sub-Grader; Tube Finisher or Broom C.M.I. or similar type; & Tugger Hoist

GROUP 4 - Air Curtain Destructor & Similar Type; Batch Plant-Job Related; Boiler Operator; Compressor; Conveyor; Curb Builder, self-propelled; Drill Wagon; Generator Set; Generator-Steam; Heater-Portable Power; Hydraulic Manipulator Crane; Jack-Hydraulic Power driven; Jack-Hydraulic (Railroad); Ladavator; Minor Machine Operator; Mixer-Concrete; Mulching Machine; Pin Puller; Power Broom; Pulverizer; Pump; Road Finishing Machine (Pull Type); Saw-Concrete-Self-Propelled (Highway Work); Signal Person; Spray Cure Machine-Motor Powered; Stump Cutter; Tractor; Trencher Form; Water Blaster; Steam Jenny; Syphon; Vibrator-Gasoline; & Welding Machine

GROUP 5 - Brakeperson; Fireperson; & Oiler

IRON0017-002 05/01/2022

ASHTABULA (North of Route 6, starting at the Geauga County Line, proceeding east to State Route 45), CUYAHOGA, ERIE (Eastern 2/3), GEAUGA, HURON (East of a line drawn from the north border through Monroeville & Willard), LAKE, LORAIN, MEDINA (North of Old Rte. #224), PORTAGE (West of a line from Middlefield to Shalersville to Deerfield), and SUMMIT (North of Old Rte. #224, including city limits of Barberton) COUNTIES

	Rates	Fringes
IRONWORKER		
Ornamental, Reinforcing, & Structural.....	\$ 34.33	27.51

IRON0017-010 05/01/2022

ASHTABULA (Eastern part from Lake Erie on the north to route #322 on the south to include Conneaut, Kingsville, Sheffield, Denmark, Dorset, Cherry Valley, Wayne, Monroe, Pierpont, Richmond, Andover & Williamsfield Townships)

	Rates	Fringes
IRONWORKER		
Structural, including metal building erection & Reinforcing.....	\$ 34.33	27.51

 IRON0044-001 06/01/2022

ADAMS (Western Part), BROWN, BUTLER (Southern Part), CLERMONT, CLINTON (South of a line drawn from Blanchester to Lynchburg), HAMILTON, HIGHLAND (Excluding eastern one-fifth & portion of county inside lines drawn from Marshall to Lynchburg from the northern county line through E. Monroe to Marshall) and WARREN (South of a line drawn from Blanchester through Morrow to the west county line) COUNTIES

	Rates	Fringes
IRONWORKER, REINFORCING.....	\$ 32.37	22.30
Beyond 30-mile radius of Hamilton County Courthouse..	\$ 28.67	21.20
Up to & including 30-mile radius of Hamilton County Courthouse.....	\$ 27.60	20.70

 IRON0044-002 06/01/2022

CLINTON (South of a line drawn from Blanchester to Lynchburg), HAMILTON, HIGHLAND (Excluding eastern one-fifth & portion of county inside lines drawn from Marshall to Lynchburg from the northern county line through E. Monroe to Marshall) & WARREN (South of a line drawn from Blanchester through Morrow to the west county line)

	Rates	Fringes
IRONWORKER		
Fence Erector.....	\$ 30.28	22.30
Ornamental; Structural.....	\$ 31.87	22.30

 IRON0055-003 07/01/2021

CRAWFORD (Area Between lines drawn from where Hwy #598 & #30 meet through N. Liberty to the northern border & from said Hwy junction point due west to the border), DEFIANCE (S. of a line drawn from where Rte. #66 meets the northern line through Independence to the eastern county border), ERIE (Western 1/3), FULTON, HANCOCK, HARDIN (North of a line drawn from Maysville to a point 4 miles south of the northern line on the eastern line), HENRY, HURON (West of a line drawn from the northern border through Monroeville & Willard), LUCAS, OTTAWA, PUTNAM (East of a line drawn from the northern border down through Miller City to where #696 meets the southern border), SANDUSKY, SENECA, WILLIAMS (East of a line drawn from Pioneer through Stryker to the southern border), WOOD & WYANDOT (North of Rte. #30)

	Rates	Fringes
IRONWORKER		
Fence Erector.....	\$ 21.30	20.92
Flat Road Mesh.....	\$ 29.77	21.30
Tunnels & Caissons Under Pressure.....	\$ 29.77	21.30
All Other Work.....	\$ 31.25	26.90

 IRON0147-002 06/01/2022

ALLEN (Northern half), DEFIANCE (Northern part, excluding south of a line drawn from where Rte. #66 meets the northern line through Independence to the eastern county border), MERCER (Northern half), PAULDING, PUTNAM (Western part, excluding east of a line drawn from the northern border down through Miller City to where #696 meets the southern border), VAN WERT, and WILLIAMS (Western part, excluding east of a line drawn from Pioneer through Stryker to the southern border) COUNTIES

	Rates	Fringes
IRONWORKER.....	\$ 31.20	28.47

IRON0172-002 06/01/2022		

CHAMPAIGN (Eastern one-third), CLARK (Eastern one-fourth), COSHOCTON (West of a line beginning at the northwestern county line going through Walhonding & Tunnel Hill to the southern county line), CRAWFORD (South of Rte. #30), DELAWARE, FAIRFIELD, FAYETTE, FRANKLIN, HARDIN (Excluding a line drawn from Roundhead to Maysville), HIGHLAND (Eastern one-fifth), HOCKING, JACKSON (Northern half), KNOX, LICKING, LOGAN (Eastern one-third), MADISON, MARION, MORROW, MUSKINGUM (West of a line starting at Adams Mill going to Adamsville & going from Adamsville through Blue Rock to the southern border), PERRY, PICKAWAY, PIKE (Northern half), ROSS, UNION, VINTON and WYANDOT (South of Rte. #30) COUNTIES

	Rates	Fringes
IRONWORKER.....	\$ 33.27	21.20

IRON0207-004 06/01/2022		

ASHTABULA (Southern part starting at the Geauga County line), COLUMBIANA (E. of a line from Damascus to Highlandtown), MAHONING (N. of Old Route #224), PORTAGE (E. of a line from Middlefield to Shalersville to Deerfield) & TRUMBULL

	Rates	Fringes
IRONWORKER		
Layout; Sheeter.....	\$ 32.92	26.26
Ornamental; Reinforcing;		
Structural.....	\$ 31.92	26.26
Ornamental; Reinforcing.....	\$ 28.92	25.61

IRON0290-002 06/01/2022		

ALLEN (Southern half), AUGLAIZE, BUTLER (North of a line drawn from east to the west county line going through Oxford, Darrrtown & Woodsdale), CHAMPAIGN (Excluding east of a line drawn from Catawla to the point where #68 intersects the northern county line), CLARK (Western two-thirds), CLINTON (Excluding south of a line drawn from Blanchester to Lynchburg), DARKE, GREENE, HIGHLAND (Inside lines drawn from Marshall to Lynchburg & from the northern county line through East Monroe to Marshall), LOGAN (West of a line drawn from West Liberty to where the northern county line meets the western county line of Hardin), MERCER (Southern half), MIAMI, MONTGOMERY, PREBLE, SHELBY & WARREN (Excluding south of a line

drawn from Blanchester through Morrow to the western county line) COUNTIES

	Rates	Fringes
IRONWORKER.....	\$ 31.59	23.85

IRON0549-003 12/01/2022		

BELMONT, GUERNSEY, HARRISON, JEFFERSON, MONROE & MUSKINGUM (Excluding portion west of a line starting at Adams Mill going to Adamsville and going from Adamsville through Blue Rock to the south border)

	Rates	Fringes
IRONWORKER.....	\$ 35.19	25.66

IRON0550-004 05/01/2022		

ASHLAND, CARROLL, COLUMBIANA (W. of a line from Damascus to Highlandtown), COSHOCTON (E. of a line beginning at NW Co. line going through Walhonding & Tunnel Hill to the South Co. line), HOLMES, HURON (S. of Old Rte. #224), MAHONING (S. of Old Rte. #224), MEDINA (S. of Old Rte. #224), PORTAGE (S. of Old Rte. #224), RICHLAND, STARK, SUMMIT (S. of Old Rte. #224, Excluding city limits of Barberton), TUSCARAWAS, & WAYNE

	Rates	Fringes
Ironworkers:Structural, Ornamental and Reinforcing.....	\$ 30.97	21.69

IRON0769-004 06/01/2022		

ADAMS (Eastern Half), GALLIA, JACKSON (Southern Half), LAWRENCE & SCIOTO

	Rates	Fringes
IRONWORKER.....	\$ 33.71	27.69

IRON0787-003 06/01/2022		

ATHENS, MEIGS, MORGAN, NOBLE, and WASHINGTON COUNTIES

	Rates	Fringes
IRONWORKER.....	\$ 31.50	23.75

LAB00265-008 05/01/2022		

	Rates	Fringes
LABORER ASHTABULA, ERIE, HURON, LORAIN, LUCAS, MAHONING, MEDINA, OTTAWA, PORTAGE, SANDUSKY, STARK, SUMMIT, TRUMBULL & WOOD COUNTIES GROUP 1.....	\$ 34.95	12.10

GROUP 2.....	\$ 35.12	12.10
GROUP 3.....	\$ 35.45	12.10
GROUP 4.....	\$ 35.90	12.10
CUYAHOGA AND GEAUGA COUNTIES ONLY: SEWAGE PLANTS, WASTE PLANTS, WATER TREATMENT FACILITIES, PUMPING STATIONS, & ETHANOL PLANTS CONSTRUCTION.....		
	\$ 37.56	12.10
CUYAHOGA, GEAUGA & LAKE COUNTIES		
GROUP 1.....	\$ 36.18	12.10
GROUP 2.....	\$ 36.35	12.10
GROUP 3.....	\$ 36.68	12.10
GROUP 4.....	\$ 37.13	12.10
REMAINING COUNTIES OF OHIO		
GROUP 1.....	\$ 34.52	12.10
GROUP 2.....	\$ 34.69	12.10
GROUP 3.....	\$ 35.02	12.10
GROUP 4.....	\$ 35.47	12.10

LABORER CLASSIFICATIONS

GROUP 1 - Asphalt Laborer; Carpenter Tender; Concrete Curing Applicator; Dump Man (Batch Truck); Guardrail and Fence Installer; Joint Setter; Laborer (Construction); Landscape Laborer; Mesh Handlers & Placer; Right-of-way Laborer; Riprap Laborer & Grouter; Scaffold Erector; Seal Coating; Surface Treatment or Road Mix Laborer; Sign Installer; Slurry Seal; Utility Man; Bridge Man; Handyman; Waterproofing Laborer; Flagperson; Hazardous Waste (level D); Diver Tender; Zone Person & Traffic Control

GROUP 2 - Asphalt Raker; Concrete Puddler; Kettle Man Pipeline); Machine Driven Tools (Gas, Electric, Air); Mason Tender; Brick Paver; Mortar Mixer; Power Buggy or Power Wheelbarrow; Paint Striper; Sheeting & Shoring Man; Surface Grinder Man; Plastic Fusing Machine Operator; Pug Mill Operator; & Vacuum Devices (wet or dry); Rodding Machine Operator; Diver; Screwman or Paver; Screed Person; Water Blast, Hand Held Wand; Pumps 4" & Under (Gas, Air or Electric) & Hazardous Waste (level C); Air Track and Wagon Drill; Bottom Person; Cofferdam (below 25 ft. deep); Concrete Saw Person; Cutting with Burning Torch; Form Setter; Hand Spiker (Railroad); Pipelayer; Tunnel Laborer (without air) & Caisson; Underground Person (working in Sewer and Waterline, Cleaning, Repairing & Reconditioning); Sandblaster Nozzle Person; & Hazardous Waste (level B)

GROUP 3 - Blaster; Mucker; Powder Person; Top Lander; Wrencher (Mechanical Joints & Utility Pipeline); Yarner; Hazardous Waste (level A); Concrete Specialist; Concrete Crew in Tunnels (With Air-pressurized - \$1.00 premium); Curb Setter & Cutter; Grade Checker; Utility Pipeline Tapper; Waterline; and Caulker

GROUP 4 - Miner (With Air-pressurized - \$1.00 premium); & Gunite Nozzle Person

TUNNEL LABORER WITH AIR-PRESSURIZED ADD \$1.00 TO BASE RATE

SIGNAL PERSON WILL RECEIVE THE RATE EQUAL TO THE RATE PAID THE LABORER CLASSIFICATION FOR WHICH HE OR SHE IS SIGNALING.

 PAIN0006-002 05/01/2018

ASHTABULA, CUYAHOGA, GEAUGA, LAKE, LORAIN, PORTAGE (N. of the East-West Turnpike) & SUMMIT (N. of the East-West Turnpike)

	Rates	Fringes
PAINTER		
COMMERCIAL NEW WORK; REMODELING; & RENOVATIONS		
GROUP 1.....	\$ 27.90	16.16
GROUP 2.....	\$ 28.30	16.16
GROUP 3.....	\$ 28.60	16.16
GROUP 4.....	\$ 34.16	16.16
COMMERCIAL REPAINT		
GROUP 1.....	\$ 26.40	16.16
GROUP 2.....	\$ 26.80	16.16
GROUP 3.....	\$ 27.10	16.16

PAINTER CLASSIFICATIONS - COMMERCIAL NEW WORK; REMODELING; & RENOVATIONS

GROUP 1 - Brush; & Roller

GROUP 2 - Sandblasting & Buffing

GROUP 3 - Spray Painting; Closed Steel Above 55 feet; Bridges & Open Structural Steel; Tanks - Water Towers; Bridge Painters; Bridge Riggers; Containment Builders

GROUP 4 - Bridge Blaster

PAINTER CLASSIFICATIONS - COMMERCIAL REPAINT

GROUP 1 - Brush; & Roller

GROUP 2 - Sandblasting & Buffing

GROUP 3 - Spray Painting

 PAIN0007-002 07/01/2021

FULTON, HENRY, LUCAS, OTTAWA (Excluding Allen, Bay, Bono, Catawba Island, Clay Center, Curtice, Danbury, Eagle Beach, Elliston, Elmore, Erie, Fishback, Gem Beach & Genova) & WOOD

	Rates	Fringes
PAINTER		
NEW COMMERCIAL WORK		
GROUP 1.....	\$ 28.74	18.77
GROUP 2.....	\$ 28.74	18.77
GROUP 3.....	\$ 28.74	18.77
GROUP 4.....	\$ 28.74	18.77
GROUP 5.....	\$ 28.74	18.77
GROUP 6.....	\$ 28.74	18.77
GROUP 7.....	\$ 28.74	18.77
GROUP 8.....	\$ 28.74	18.77
GROUP 9.....	\$ 28.74	18.77

REPAINT IS 90% OF JR

PAINTER CLASSIFICATIONS

GROUP 1 - Brush; Spray & Sandblasting Pot Tender

GROUP 2 - Refineries & Refinery Tanks; Surfaces 30 ft. or over where material is applied to or labor performed on above ground level (exterior), floor level (interior)

GROUP 3 - Swing Stage & Chair

GROUP 4 - Lead Abatement

GROUP 5 - All Methods of Spray

GROUP 6 - Solvent-Based Catalized Epoxy Materials of 2 or More Component Materials, to include Solvent-Based Conversion Varnish (excluding water based)

GROUP 7 - Spray Solvent Based Material; Sand & Abrasive Blasting

GROUP 8 - Towers; Tanks; Bridges; Stacks Over 30 Feet

GROUP 9 - Epoxy Spray (excluding water based)

PAIN0012-008 05/01/2019

BUTLER COUNTY

	Rates	Fringes
PAINTER		
GROUP 1.....	\$ 21.95	10.20
GROUP 2.....	\$ 25.30	10.20
GROUP 3.....	\$ 25.80	10.20
GROUP 4.....	\$ 26.05	10.20
GROUP 5.....	\$ 26.30	10.20

PAINTER CLASSIFICATIONS

GROUP 1: Bridge Equipment Tender; Bridge/Containment Builder

GROUP 2: Brush & Roller

GROUP 3: Spray

GROUP 4: Sandblasting; & Waterblasting

GROUP 5: Elevated Tanks; Steeplejack Work; Bridge; & Lead Abatement

PAIN0012-010 05/01/2019

BROWN, CLERMONT, CLINTON, HAMILTON & WARREN

	Rates	Fringes
PAINTER		
HEAVY & HIGHWAY BRIDGES-		
GUARDRAILS-LIGHTPOLES-		
STRIPING		

Bridge Equipment Tender and Containment Builder....	\$ 21.95	10.20
Bridges when highest point of clearance is 60 feet or more; & Lead Abatement Projects.....	\$ 26.30	10.20
Brush & Roller.....	\$ 25.30	10.20
Sandblasting & Hopper Tender; Water Blasting.....	\$ 26.05	10.20
Spray.....	\$ 25.80	10.20

PAIN0093-001 12/01/2018

ATHENS, GUERNSEY, HOCKING, MONROE, MORGAN, NOBLE and
WASHINGTON COUNTIES

Rates Fringes

PAINTER

Bridges; Locks; Dams; Tension Towers; & Energized Substations.....	\$ 34.04	18.50
Power Generating Facilities.	\$ 30.89	18.50

PAIN0249-002 06/01/2020

CLARK, DARKE, GREENE, MIAMI, MONTGOMERY & PREBLE

Rates Fringes

PAINTER

GROUP 1 - Brush & Roller....	\$ 24.17	11.22
GROUP 2 - Swing, Scaffold Bridges; Structural Steel; Open Acid Tank; High Tension Electrical Equipment; & Hot Pipes.....	\$ 24.17	11.22
GROUP 3 - Spray; Sandblast; Steamclean; Lead Abatement.....	\$ 24.92	11.22
GROUP 4 - Steeplejack Work..	\$ 25.12	11.22
GROUP 5 - Coal Tar.....	\$ 25.67	11.22
GROUP 6 - Bridge Equipment Tender & or Containment Builder.....	\$ 32.88	11.22
GROUP 7 - Tanks, Stacks & Towers.....	\$ 27.81	11.22
GROUP 8 - Bridge Blaster, Rigger.....	\$ 35.88	11.22

PAIN0356-002 09/01/2009

KNOX, LICKING, MUSKINGUM, and PERRY

Rates Fringes

PAINTER

Bridge Equipment Tenders and Containment Builders....	\$ 27.93	7.25
Bridges; Blasters; and Riggers.....	\$ 34.60	7.25
Brush and Roller.....	\$ 20.93	7.25
Sandblasting; Steam Cleaning; Waterblasting;		

and Hazardous Work.....	\$ 25.82	7.25
Spray.....	\$ 21.40	7.25
Structural Steel and Swing		
Stage.....	\$ 25.42	7.25
Tanks; Stacks; and Towers...	\$ 28.63	7.25

PAIN0438-002 12/01/2021

BELMONT, HARRISON and JEFFERSON COUNTIES

Rates	Fringes
-------	---------

PAINTER

Bridges, Locks, Dams, Tension Towers & Energized Substations.....	\$ 34.47	20.60
Power Generating Facilities.	\$ 29.65	17.68

PAIN0476-001 06/01/2021

COLUMBIANA, MAHONING, and TRUMBULL COUNTIES

Rates	Fringes
-------	---------

PAINTER

GROUP 1.....	\$ 25.79	15.81
GROUP 2.....	\$ 33.10	15.81
GROUP 3.....	\$ 26.00	15.81
GROUP 4.....	\$ 27.12	15.81
GROUP 5.....	\$ 27.79	15.81
GROUP 6.....	\$ 26.69	15.81
GROUP 7.....	\$ 27.79	15.81

PAINTER CLASSIFICATIONS:

GROUP 1: Painters, Brush & Roller

GROUP 2: Bridges

GROUP 3: Structural Steel

GROUP 4: Spray, Except Bar Joist/Deck

GROUP 5: Epoxy/Mastic; Spray- Bar Joist/Deck; Working Above
50 Feet; and Swingstages

GROUP 6: Tanks; Sandblasting

GROUP 7: Towers; Stacks

PAIN0555-002 06/01/2021

ADAMS, HIGHLAND, JACKSON, PIKE & SCIOTO

Rates	Fringes
-------	---------

PAINTER

GROUP 1.....	\$ 31.95	17.05
GROUP 2.....	\$ 33.47	17.05
GROUP 3.....	\$ 34.99	17.05
GROUP 4.....	\$ 37.97	17.05

PAINTER CLASSIFICATIONS

GROUP 1 - Containment Builder

GROUP 2 - Brush; Roller; Power Tools, Under 40 feet

GROUP 3 - Sand Blasting; Spray; Steam Cleaning; Pressure Washing; Epoxy & Two Component Materials; Lead Abatement; Hazardous Waste; Toxic Materials; Bulk & Storage Tanks of 25,000 Gallon Capacity or More; Elevated Tanks

GROUP 4 - Stacks; Bridges

PAIN0639-001 05/01/2011

	Rates	Fringes
Sign Painter & Erector.....	\$ 20.61	3.50+a+b+c

FOOTNOTES: a. 7 Paid Holidays: New Year's Day; Memorial Day; July 4th; Labor Day; Thanksgiving Day; Christmas Day & 1 Floating Day
 b. Vacation Pay: After 1 year's service - 5 days' paid vacation; After 2, but less than 10 years' service - 10 days' paid vacation; After 10, but less than 20 years' service - 15 days' paid vacation; After 20 years' service - 20 days' paid vacation
 c. Funeral leave up to 3 days maximum paid leave for death of mother, father, brother, sister, spouse, child, mother-in-law, father-in-law, grandparent and inlaw provided employee attends funeral

PAIN0788-002 06/01/2022

ASHLAND, CRAWFORD, ERIE, HANCOCK, HURON, MARION, MORROW, OTTAWA (Allen, Bay, Bono, Catawba Island, Clay Center, Curtice, Danbury, Eagle Beach, Elliston, Elmore, Erie, Fishback, Gem Beach & Genoa), RICHLAND, SANDUSKY, SENECA & WYANDOT

	Rates	Fringes
PAINTER		
Brush & Roller.....	\$ 25.08	16.72
Structural Steel.....	\$ 26.68	16.72

WINTER REPAINT: Between December 1 to March 31 - 90%JR

\$.50 PER HOUR SHALL BE ADDED TO THE RATE OF PAY FOR THE CLASSIFICATION OF WORK:

While working swingstage, boatswain chair, needle beam and horizontal cable. While operating sprayguns, sandblasting, cobblasting and high pressure waterblasting (4000psi).

\$1.00 PER HOUR SHALL BE ADDED TO THE RATE OF PAY FOR THE CLASSIFICATION OF WORK:

For the application of catalized epoxy, including latex epoxy that is deemed hazardous, lead abatement, or for work or material where special precautions beyond normal work duties must be taken. For working on stacks, tanks, and towers over 40 feet in height.

PAIN0813-005 12/01/2008

GALLIA, LAWRENCE, MEIGS & VINTON

	Rates	Fringes
PAINTER		
Base Rate.....	\$ 24.83	10.00
Bridges, Locks, Dams & Tension Towers.....	\$ 27.83	10.00

PAIN0841-001 06/01/2018

MEDINA, PORTAGE (South of and including Ohio Turnpike), and
SUMMIT (South of and including Ohio Turnpike) COUNTIES

	Rates	Fringes
Painters:		
GROUP 1.....	\$ 25.75	14.35
GROUP 2.....	\$ 26.40	14.35
GROUP 3.....	\$ 26.50	14.35
GROUP 4.....	\$ 26.60	14.35
GROUP 5.....	\$ 27.00	14.35
GROUP 6.....	\$ 39.20	11.75
GROUP 7.....	\$ 27.00	14.35

PAINTER CLASSIFICATIONS:

GROUP 1 - Brush, Roller & Paperhanger

GROUP 2 - Epoxy Application

GROUP 3 - Swing Scaffold, Bosum Chair, & Window Jack

GROUP 4 - Spray Gun Operator of Any & All Coatings

GROUP 5 - Sandblast, Painting of Standpipes, etc. from
Scaffolds, Bridge Work and/or Open Structural Steel,
Standpipes and/or Water Towers

GROUP 6 - Public & Commerce Transportation, Steel or
Galvanized, Bridges, Tunnels & Related Support Items
(concrete)

GROUP 7 - Synthetic Exterior, Drywall Finisher and/or Taper,
Drywall Finisher and Follow-up Man Using Automatic Tools

PAIN0841-002 06/01/2022

CARROLL, COSHOCTON, HOLMES, STARK, TUSCARAWAS & WAYNE

	Rates	Fringes
PAINTER		
Bridges; Towers, Poles & Stacks; Sandblasting Steel; Structural Steel & Metalizing.....	\$ 23.50	15.45
Brush & Roller.....	\$ 28.18	15.45
Spray; Tank Interior & Exterior.....	\$ 23.50	15.45

PAIN1020-002 06/01/2022

ALLEN, AUGLAIZE, CHAMPAIGN, DEFIANCE, HARDIN, LOGAN, MERCER, PAULDING, PUTNAM, SHELBY, VAN WERT, and WILLIAMS COUNTIES

	Rates	Fringes
PAINTER		
Brush & Roller.....	\$ 26.20	15.00
Drywall Finishing & Taping..	\$ 24.90	15.00
Lead Abatement.....	\$ 27.95	15.00
Spray, Sandblasting Pressure Cleaning, & Refinery.....	\$ 26.95	15.00
Swing Stage, Chair, Spiders, & Cherry Pickers...	\$ 25.47	15.00
Wallcoverings.....	\$ 23.80	15.00

All surfaces 40 ft. or over where material is applied to or labor performed on, above ground level (exterior), floor level (interior) - \$.50 premium

Applying Coal Tar Products - \$1.00 premium

PAIN1275-002 06/01/2020

DELAWARE, FAIRFIELD, FAYETTE, FRANKLIN, MADISON, PICKAWAY, ROSS & UNION

	Rates	Fringes
PAINTER		
Bridges.....	\$ 34.64	14.40
Brush; Roller.....	\$ 25.16	14.40
Sandblasting; Steamcleaning; Waterblasting (3500 PSI or Over)& Hazardous Work.....	\$ 25.86	14.40
Spray.....	\$ 25.66	14.40
Stacks; Tanks; & Towers.....	\$ 28.67	14.40
Structural Steel & Swing Stage.....	\$ 25.46	14.40

PLAS0109-001 05/01/2018

MEDINA, PORTAGE, STARK, and SUMMIT COUNTIES

	Rates	Fringes
PLASTERER.....	\$ 28.86	17.11

PLAS0109-003 05/01/2018

CARROLL, HOLMES, TUSCARAWAS, and WAYNE COUNTIES

	Rates	Fringes
PLASTERER.....	\$ 28.21	17.11

PLAS0132-002 06/01/2022

BROWN, BUTLER, CLERMONT, HAMILTON, HIGHLAND, WARREN COUNTIES

	Rates	Fringes
PLASTERER.....	\$ 29.25	14.69

PLAS0404-002 05/01/2018

ASHTABULA, CUYAHOGA, GEAUGA, AND LAKE COUNTIES

	Rates	Fringes
PLASTERER.....	\$ 29.63	17.11

PLAS0404-003 05/01/2018

LORAIN COUNTY

	Rates	Fringes
PLASTERER.....	\$ 28.86	17.11

PLAS0526-022 05/01/2018

COLUMBIANA, MAHONING, and TRUMBULL COUNTIES

	Rates	Fringes
PLASTERER.....	\$ 28.86	17.11

PLAS0526-023 05/01/2018

BELMONT, HARRISON, and JEFFERSON COUNTIES

	Rates	Fringes
PLASTERER.....	\$ 28.21	17.11

PLAS0886-001 05/01/2018

FULTON, HANCOCK, HENRY, LUCAS, PUTNAM, and WOOD COUNTIES

	Rates	Fringes
PLASTERER.....	\$ 29.63	17.11

PLAS0886-003 05/01/2018

DEFIANCE, ERIE, HURON, OTTAWA, PAULDING, SANDUSKY, and SENECA COUNTIES

	Rates	Fringes
PLASTERER.....	\$ 28.86	17.11

PLAS0886-004 05/01/2018

ALLEN, AUGLAIZE, HARDIN, LOGAN, MERCER, and VAN WERT COUNTIES

	Rates	Fringes
PLASTERER.....	\$ 28.21	17.11

PLUM0042-002 07/01/2022

ASHLAND, CRAWFORD, ERIE, HURON, KNOX, LORAIN, MORROW, RICHLAND & WYANDOT

Rates Fringes

Plumber, Pipefitter, Steamfitter.....\$ 34.42 25.47

PLUM0050-002 07/04/2022

DEFIANCE, FULTON, HANCOCK, HENRY, LUCAS, OTTAWA, PAULDING, PUTNAM, SANDUSKY, SENECA, WILLIAMS & WOOD

Rates Fringes

Plumber, Pipefitter, Steamfitter.....\$ 44.60 28.51

PLUM0055-003 05/01/2022

ASHTABULA, CUYAHOGA, GEAUGA, LAKE, MEDINA (N. of Rte. #18 & Smith Road) & SUMMIT (N. of Rte. #303, including the corporate limits of the city of Hudson)

Rates Fringes

PLUMBER.....\$ 40.00 28.43

PLUM0083-001 07/01/2017

BELMONT & MONROE (North of Rte. #78)

Rates Fringes

Plumber and Steamfitter.....\$ 32.16 31.51

PLUM0094-002 05/01/2022

CARROLL (Nortnen Half), STARK, and WAYNE COUNTIES

Rates Fringes

PLUMBER/PIPEFITTER.....\$ 36.83 22.99

PLUM0120-002 05/02/2022

ASHTABULA, CUYAHOGA, GEAUGA, LAKE, LORAIN (the C.E.I. Power House in Avon Lake), MEDINA (N. of Rte. #18) & SUMMIT (N. of #303)

Rates Fringes

PIPEFITTER.....\$ 44.07 28.34

PLUM0162-002 06/01/2022

CHAMPAIGN, CLARK, CLINTON, DARKE, FAYETTE, GREENE, MIAMI, MONTGOMERY & PREBLE

Rates Fringes

Plumber, Pipefitter, Steamfitter.....	\$ 36.47	26.80
--	----------	-------

PLUM0168-002 06/01/2022

MEIGS, MONROE (South of Rte. #78), MORGAN (South of Rte. #78)
& WASHINGTON

	Rates	Fringes
PLUMBER/PIPEFITTER.....	\$ 38.02	34.09

PLUM0189-002 06/01/2019

DELAWARE, FAIRFIELD, FRANKLIN, HOCKING, LICKING, MADISON,
MARION, PERRY, PICKAWAY, ROSS & UNION

	Rates	Fringes
Plumber, Pipefitter, Steamfitter.....	\$ 38.45	16.98

PLUM0219-002 06/01/2022

MEDINA (Rte. #18 from eastern edge of Medina Co., west to
eastern corporate limits of the city of Medina, & on the county
road from the west corporate limits of Medina running due west
to and through community of Risley to the western edge of
Medina County - All territory south of this line), PORTAGE, and
SUMMIT (S. of Rte. #303) COUNTIES

	Rates	Fringes
Plumber and Steamfitter.....	\$ 41.22	26.64

PLUM0392-002 06/01/2022

BROWN, BUTLER, CLERMONT, HAMILTON & WARREN

	Rates	Fringes
PLUMBER/PIPEFITTER.....	\$ 36.71	24.89

* PLUM0396-001 06/01/2022

COLUMBIANA (Excluding Washington & Yellow Creek Townships &
Liverpool Twp. - Secs. 35 & 36 - West of County Road #427),
MAHONING and TRUMBULL COUNTIES

	Rates	Fringes
PLUMBER/PIPEFITTER.....	\$ 36.00	27.91

PLUM0495-002 06/01/2022

CARROLL (Rose, Monroe, Union, Lee, Orange, Perry & Loudon
Townships), COLUMBIANA (Washington & Yellow Creek Townships &
Liverpool Township, Secs. 35 & 36, West of County Rd. #427),
COSHOCTON, GUERNSEY, HARRISON, HOLMES, JEFFERSON, MORGAN (South
to State Rte. #78 & from McConnelssville west on State Rte. #37

to the Perry County line), MUSKINGUM, NOBLE, and TUSCARAWAS COUNTIES

	Rates	Fringes
Plumber, Pipefitter, Steamfitter.....	\$ 31.24	34.34

PLUM0577-002 06/01/2022

ADAMS, ATHENS, GALLIA, HIGHLAND, JACKSON, LAWRENCE, PIKE, SCIOTO & VINTON

	Rates	Fringes
Plumber, Pipefitter, Steamfitter.....	\$ 37.56	25.73

PLUM0776-002 07/01/2022

ALLEN, AUGLAIZE, HARDIN, LOGAN, MERCER, SHELBY and VAN WERT COUNTIES

	Rates	Fringes
Plumber, Pipefitter, Steamfitter.....	\$ 39.33	27.68

TEAM0377-003 05/01/2021

STATEWIDE, EXCEPT CUYAHOGA, GEAUGA & LAKE

	Rates	Fringes
TRUCK DRIVER		
GROUP 1.....	\$ 29.74	15.70
GROUP 2.....	\$ 30.16	15.70

TRUCK DRIVER CLASSIFICATIONS

GROUP 1 - Asphalt Distributor; Batch; 4- Wheel Service; 4-Wheel Dump; Oil Distributor & Tandem

GROUP 2 - Tractor-Trailer Combination: Fuel; Pole Trailer; Ready Mix; Semi-Tractor; & Asphalt Oil Spraybar Man When Operated From Cab; 5 Axles & Over; Belly Dump; End Dump; Articulated Dump; Heavy Duty Equipment; Low Boy; & Truck Mechanic

TEAM0436-002 05/01/2021

CUYAHOGA, GEAUGA & LAKE

	Rates	Fringes
TRUCK DRIVER		
GROUP 1.....	\$ 30.65	16.95
GROUP 2.....	\$ 31.15	16.95

GROUP 1: Straight & Dump, Straight Fuel

GROUP 2: Semi Fuel, Semi Tractor, Euclids, Darts, Tank, Asphalt Spreaders, Low Boys, Carry-All, Tourna-Rockers, Hi-Lifts, Extra Long Trailers, Semi-Pole Trailers, Double Hook-Up Tractor Trailers including Team Track & Railroad Siding, Semi-Tractor & Tri-Axle Trailer, Tandem Tractor & Tandem Trailer, Tag Along Trailer, Expandable Trailer or Towing Requiring Road Permits, Ready-Mix (Agitator or Non-Agitator), Bulk Concrete Driver, Dry Batch Truck, Articulated End Dump

WELDERS - Receive rate prescribed for craft performing operation to which welding is incidental.

=====
** Workers in this classification may be entitled to a higher minimum wage under Executive Order 14026 (\$16.20) or 13658 (\$12.15). Please see the Note at the top of the wage determination for more information.

Note: Executive Order (EO) 13706, Establishing Paid Sick Leave for Federal Contractors applies to all contracts subject to the Davis-Bacon Act for which the contract is awarded (and any solicitation was issued) on or after January 1, 2017. If this contract is covered by the EO, the contractor must provide employees with 1 hour of paid sick leave for every 30 hours they work, up to 56 hours of paid sick leave each year. Employees must be permitted to use paid sick leave for their own illness, injury or other health-related needs, including preventive care; to assist a family member (or person who is like family to the employee) who is ill, injured, or has other health-related needs, including preventive care; or for reasons resulting from, or to assist a family member (or person who is like family to the employee) who is a victim of, domestic violence, sexual assault, or stalking. Additional information on contractor requirements and worker protections under the EO is available at <https://www.dol.gov/agencies/whd/government-contracts>.

Unlisted classifications needed for work not included within the scope of the classifications listed may be added after award only as provided in the labor standards contract clauses (29CFR 5.5 (a) (1) (ii)).

The body of each wage determination lists the classification and wage rates that have been found to be prevailing for the cited type(s) of construction in the area covered by the wage determination. The classifications are listed in alphabetical order of ""identifiers"" that indicate whether the particular rate is a union rate (current union negotiated rate for local), a survey rate (weighted average rate) or a union average rate (weighted union average rate).

Union Rate Identifiers

A four letter classification abbreviation identifier enclosed in dotted lines beginning with characters other than ""SU"" or ""UAVG"" denotes that the union classification and rate were prevailing for that classification in the survey. Example:

PLUM0198-005 07/01/2014. PLUM is an abbreviation identifier of the union which prevailed in the survey for this classification, which in this example would be Plumbers. 0198 indicates the local union number or district council number where applicable, i.e., Plumbers Local 0198. The next number, 005 in the example, is an internal number used in processing the wage determination. 07/01/2014 is the effective date of the most current negotiated rate, which in this example is July 1, 2014.

Union prevailing wage rates are updated to reflect all rate changes in the collective bargaining agreement (CBA) governing this classification and rate.

Survey Rate Identifiers

Classifications listed under the ""SU"" identifier indicate that no one rate prevailed for this classification in the survey and the published rate is derived by computing a weighted average rate based on all the rates reported in the survey for that classification. As this weighted average rate includes all rates reported in the survey, it may include both union and non-union rates. Example: SULA2012-007 5/13/2014. SU indicates the rates are survey rates based on a weighted average calculation of rates and are not majority rates. LA indicates the State of Louisiana. 2012 is the year of survey on which these classifications and rates are based. The next number, 007 in the example, is an internal number used in producing the wage determination. 5/13/2014 indicates the survey completion date for the classifications and rates under that identifier.

Survey wage rates are not updated and remain in effect until a new survey is conducted.

Union Average Rate Identifiers

Classification(s) listed under the UAVG identifier indicate that no single majority rate prevailed for those classifications; however, 100% of the data reported for the classifications was union data. EXAMPLE: UAVG-OH-0010 08/29/2014. UAVG indicates that the rate is a weighted union average rate. OH indicates the state. The next number, 0010 in the example, is an internal number used in producing the wage determination. 08/29/2014 indicates the survey completion date for the classifications and rates under that identifier.

A UAVG rate will be updated once a year, usually in January of each year, to reflect a weighted average of the current negotiated/CBA rate of the union locals from which the rate is based.

WAGE DETERMINATION APPEALS PROCESS

1.) Has there been an initial decision in the matter? This can be:

- * an existing published wage determination
- * a survey underlying a wage determination
- * a Wage and Hour Division letter setting forth a position on a wage determination matter
- * a conformance (additional classification and rate) ruling

On survey related matters, initial contact, including requests for summaries of surveys, should be with the Wage and Hour National Office because National Office has responsibility for the Davis-Bacon survey program. If the response from this initial contact is not satisfactory, then the process described in 2.) and 3.) should be followed.

With regard to any other matter not yet ripe for the formal process described here, initial contact should be with the Branch of Construction Wage Determinations. Write to:

Branch of Construction Wage Determinations
Wage and Hour Division
U.S. Department of Labor
200 Constitution Avenue, N.W.
Washington, DC 20210

2.) If the answer to the question in 1.) is yes, then an interested party (those affected by the action) can request review and reconsideration from the Wage and Hour Administrator (See 29 CFR Part 1.8 and 29 CFR Part 7). Write to:

Wage and Hour Administrator
U.S. Department of Labor
200 Constitution Avenue, N.W.
Washington, DC 20210

The request should be accompanied by a full statement of the interested party's position and by any information (wage payment data, project description, area practice material, etc.) that the requestor considers relevant to the issue.

3.) If the decision of the Administrator is not favorable, an interested party may appeal directly to the Administrative Review Board (formerly the Wage Appeals Board). Write to:

Administrative Review Board
U.S. Department of Labor
200 Constitution Avenue, N.W.
Washington, DC 20210

4.) All decisions by the Administrative Review Board are final.

=====

END OF GENERAL DECISIO"