

**RESOLUTION APPROVING REVISION TO THE ASHTABULA COUNTY RADIOLOGICAL EMERGENCY RESPONSE PLAN**

WHEREAS, Mike Fitchet, Director of the Ashtabula County Emergency Management Agency, has presented a revision to the Ashtabula County Radiological Emergency Response Plan which provides for the orderly response of Ashtabula County to an emergency situation at the Perry Nuclear Power Plant located in Lake County; and

WHEREAS, it is a requirement of Federal and State regulations for the licensing of a nuclear facility that a Response Plan be developed for the protection of the public within a fifty-mile area surrounding such a facility; and

WHEREAS, it is necessary, from time to time, to review and update the Plan to ensure that the Plan is compliant with changing regulations, circumstances, and participating entities; and

WHEREAS, this Board of Commissioners has reviewed the revisions to the plan with Mr. Fitchet and found them to be necessary; now

THEREFORE, BE IT RESOLVED, by the Board of Commissioners of Ashtabula County, Ohio that the revisions to the Ashtabula County Radiological Emergency Response Plan is approved.

**ASHTABULA COUNTY COMMISSIONERS  
CERTIFICATION PAGE**

**Resolution No. 2023-585**

**November 29, 2023**

**RESOLUTION APPROVING REVISION TO THE ASHTABULA COUNTY  
RADIOLOGICAL EMERGENCY RESPONSE PLAN**

**Upon the motion of J.P. Ducro IV, seconded by Kathryn L. Whittington.**

**VOTE:**

**Casey R. Kozlowski  
Kathryn L. Whittington  
J.P. Ducro IV**

**Aye  
Aye  
Aye**

**CERTIFICATE OF CLERK**

IT IS HEREBY CERTIFIED that the foregoing is a true and correct transcript of a resolution acted upon and duly passed by the Board of County Commissioners of Ashtabula County, Ohio, on the date noted above.



---

Crystal Sturgill, Clerk of the Board  
Board of County Commissioners  
Ashtabula County, Ohio

*Acting*

## CERTIFICATION

This Plan is adopted as the Ashtabula County Radiological Emergency Response Plan for an emergency at the Perry Nuclear Power Plant. It has been developed to comply with all applicable Federal and State regulations and provide the policies and procedures to be followed in responding to such an emergency.

This Plan supersedes all other Ashtabula County plans for response to an emergency at the Perry Nuclear Power Plant.

Adopted on this date: November 29, 2023

## OFFICIALS

  
\_\_\_\_\_  
President, Ashtabula County Commissioners  
\_\_\_\_\_  
Member, Ashtabula County Commissioners  
\_\_\_\_\_  
Member, Ashtabula County Commissioners  
\_\_\_\_\_  
Director, Ashtabula County Emergency Management Agency

# **ASHTABULA COUNTY EMERGENCY MANAGEMENT AGENCY**



## **RADIOLOGICAL EMERGENCY RESPONSE PLAN**

JANUARY 2024

## **THE ASHTABULA COUNTY RADIOLOGICAL EMERGENCY RESPONSE PLAN**

### **RECORD OF REVISIONS**

Global changes made throughout the entire plan are:

1. Revision # and date
2. Minor typographical corrections

Other Changes:

Section F:

- F.2. Removed reference to satellite phones.
- F.2. Removed OSHP 5-way extension from the plan.
- F.2. Removed EDL phone from PNPP EOF.

Section G:

- G.2. Removed reference to posters on sirens.
- G.3. Clarified that the JIC may be activated at any emergency classification.

Section H:

- H.2.2. Removed reference to satellite phones.

Section N:

- N.3. Removed PNPP from the EDL communications test.

Section P:

- P.3: Added receipt verification for plan documents transmitted electronically.

Appendix 1:

- Clarified the parties on the EDL phone

Appendix 4:

- Removed Geneva Shores nursing home from the plan.
- Changed host facility for Rae Ann Enterprises to Saybrook Landing Health and Rehabilitation.
- Added Generations Behavioral Health to the plan and showed Ashtabula County Medical Center as their host facility.
- Added Ashtabula City Fire Department to the plan.
- Changed A-Tech to a backup receiving school.

Appendix 10:

- Removed reference to satellite phones.

Appendix 18:

- Indian Creek Resort name changed to Sun Retreats Geneva on the Lake.

Appendix 19:

- Changed host facility for Rae Ann Enterprises to Saybrook Landing Health and Rehabilitation.
- Changed host facility for Pine Grove to Saybrook Landing Health and Rehabilitation.

Appendix 23:

- Revised crosswalk to reflect the FEMA comments from the 2023 RERP review. No revision bars used.

**RESOLUTION APPROVING REVISION TO THE ASHTABULA COUNTY RADIOLOGICAL EMERGENCY RESPONSE PLAN**

WHEREAS, Mike Fitchet, Director of the Ashtabula County Emergency Management Agency, has presented a revision to the Ashtabula County Radiological Emergency Response Plan which provides for the orderly response of Ashtabula County to an emergency situation at the Perry Nuclear Power Plant located in Lake County; and

WHEREAS, it is a requirement of Federal and State regulations for the licensing of a nuclear facility that a Response Plan be developed for the protection of the public within a fifty-mile area surrounding such a facility; and

WHEREAS, it is necessary, from time to time, to review and update the Plan to ensure that the Plan is compliant with changing regulations, circumstances, and participating entities; and

WHEREAS, this Board of Commissioners has reviewed the revisions to the plan with Mr. Fitchet and found them to be necessary; now

THEREFORE, BE IT RESOLVED, by the Board of Commissioners of Ashtabula County, Ohio that the revisions to the Ashtabula County Radiological Emergency Response Plan is approved.

**ASHTABULA COUNTY COMMISSIONERS  
CERTIFICATION PAGE**

**Resolution No. 2023-585**

**November 29, 2023**

**RESOLUTION APPROVING REVISION TO THE ASHTABULA COUNTY  
RADIOLOGICAL EMERGENCY RESPONSE PLAN**

**Upon the motion of J.P. Ducro IV, seconded by Kathryn L. Whittington.**

**VOTE:**

**Casey R. Kozlowski  
Kathryn L. Whittington  
J.P. Ducro IV**

**Aye  
Aye  
Aye**

**CERTIFICATE OF CLERK**

IT IS HEREBY CERTIFIED that the foregoing is a true and correct transcript of a resolution acted upon and duly passed by the Board of County Commissioners of Ashtabula County, Ohio, on the date noted above.



---

Crystal Sturgill, Clerk of the Board  
Board of County Commissioners  
Ashtabula County, Ohio

*Acting*



## CERTIFICATION

This Plan is adopted as the Ashtabula County Radiological Emergency Response Plan for an emergency at the Perry Nuclear Power Plant. It has been developed to comply with all applicable Federal and State regulations and provide the policies and procedures to be followed in responding to such an emergency.

This Plan supersedes all other Ashtabula County plans for response to an emergency at the Perry Nuclear Power Plant.

Adopted on this date: November 29, 2023

### OFFICIALS

  
\_\_\_\_\_  
President, Ashtabula County Commissioners  
\_\_\_\_\_  
Member, Ashtabula County Commissioners  
\_\_\_\_\_  
Member, Ashtabula County Commissioners  
\_\_\_\_\_  
Director, Ashtabula County Emergency Management Agency

**ASHTABULA COUNTY  
RADIOLOGICAL EMERGENCY PREPAREDNESS PLAN  
DISTRIBUTION LIST**

Electronic files of this Radiological Emergency Preparedness Plan (RERP) are distributed to the following agencies:

Ashtabula County

Ashtabula County Commissioner, President  
Ashtabula Emergency Management Agency

Utility

PNPP Emergency Response Section Supervisor  
PNPP Off-Site Liaison

Federal

FEMA Region V (sent by OEMA with the Annual Letter of Certification)

State of Ohio

Ohio Emergency Management Agency - Columbus  
OEMA Lake County Resident Radiological Analyst

Other

Lake County Emergency Management Agency  
Geauga County Department of Emergency Services

The RERP is also posted on the Ashtabula County EMA web site to make it available for any other interested parties.

The Suggested Operating Guidelines (SOGs) are the agency specific portions of the RERP provided to each agency participating in the RERP (Appendix 4).

## **PREFACE**

This Plan describes the actions required by Ashtabula County to react and respond to a radiological or non-radiological emergency at the Perry Nuclear Power Plant (PNPP) in the event such an emergency should occur.

The Plan identifies responsibilities of County, State, Federal and local agencies during an emergency at PNPP. The Plan outlines what actions are required and who is responsible for completing the actions.

The Plan is supported by Suggested Operating Guidelines for each organization, agency or individual that may have an emergency response function as a result of an emergency at PNPP. These Suggested Operating Guidelines describe in detail, by concept and checklist, the suggested response actions to be taken by the agency, its personnel, or individuals necessary to accomplish the assigned tasks.

## TABLE OF CONTENTS

Record of Revisions	i
Certification	1
Distribution	2
Preface	3

### **A. GENERAL**

A.1	Components of the Overall Radiological Emergency Preparedness Plan	A-1
A.2	Organization of the Basic Radiological Emergency Preparedness Plan	A-1
A.3	Concept of Operations	A-2
A.4	Emergency Planning Zone Concept	A-5
A.5	Subareas	A-6
A.6	Reentry and Recovery	A-6

### **B. ASSIGNMENT OF RESPONSIBILITY (ORGANIZATIONAL CONTROL)**

B.1	Purpose	B-1
B.2	Agencies and Organizations Participating in an Ashtabula County Response	B-1
B.3	Control and Coordination of an Ashtabula County Response	B-1
B.4	Continuous Staffing of Communications Links	B-2
B.5	Legal Basis for the Plan	B-3

### **C. EMERGENCY RESPONSE SUPPORT AND RESOURCES**

C.1	Purpose	C-1
C.2	County Resources Available to Support the State and Federal Response	C-1
C.3	Sources of Additional Assistance	C-1
C.4	Representation at the Emergency Operations Facility	C-2

### **D. EMERGENCY CLASSIFICATION SYSTEM**

D.1	Purpose	D-1
D.2	Emergency Classification System	D-1
D.3	Action Level Scheme	D-2

## TABLE OF CONTENTS

<u>Section</u>	<u>Page</u>
<b>E. NOTIFICATION METHODS AND PROCEDURES</b>	
E.1 Purpose	E-1
E.2 County Notification	E-1
E.3 Agency Notification	E-2
E.4 Notification of the Public	E-2
<b>F. EMERGENCY COMMUNICATIONS</b>	
F.1 Purpose	F-1
F.2 Emergency Communications Systems	F-1
F.3 Communications Center	F-4
F.4 Message Center	F-4
F.5 Internal Agency/Organization Communications	F-4
F.6 Communications With Medical Units	F-4
F.7 Testing the Emergency Communications System	F-4
<b>G. PUBLIC EDUCATION AND INFORMATION</b>	
G.1 Purpose	G-1
G.2 Dissemination of Public Information	G-1
G.3 Public Information During an Emergency	G-2
G.4 Public Inquiry	G-3
G.5 News Media Briefing	G-4
<b>H. EMERGENCY FACILITIES AND EQUIPMENT</b>	
H.1 Purpose	H-1
H.2 Ashtabula County Emergency Operations Center (EOC)	H-1
H.3 Emergency Equipment and Kits	H-2
H.4 Central Location for Receipt and Coordination of Field Monitoring Data	H-4

## TABLE OF CONTENTS

<u>Section</u>	<u>Page</u>
<b>I. ACCIDENT ASSESSMENT</b>	
I.1 Purpose	I-1
I.2 Radiological Monitoring and Accident Assessment	I-1
<b>J. PROTECTIVE RESPONSE</b>	
J.1 Purpose	J-1
J.2 Potential Protective Actions	J-1
J.3 Determination of Protective Actions	J-2
J.4 Sheltering	J-4
J.5 Evacuation	J-5
J.6 Potassium Iodide Distribution	J-10
<b>K. RADIOLOGICAL EXPOSURE CONTROL</b>	
K.1 Purpose	K-1
K.2 Dosimetry Equipment	K-1
K.3 Records	K-1
K.4 Dosimetry Reading and Exposure Reporting	K-2
K.5 Exposure Control and Limits	K-2
K.6 Monitoring for Radioactive Contamination	K-3
K.7 Decontamination	K-3
K.8 Contaminated/Injured Persons	K-4
K.9 Use of Radioprotective Drugs	K-5
<b>L. MEDICAL AND PUBLIC HEALTH SUPPORT</b>	
L.1 Purpose	L-1
L.2 Treating Contaminated/Injured Individuals	L-1
L.3 Transportation of Contaminated/Injured Individuals	L-1
L.4 Letters of Agreement	L-2

## TABLE OF CONTENTS

<u>Section</u>	<u>Page</u>
<b>M. RELOCATION, REENTRY, RETURN AND RECOVERY</b>	
M.1 Purpose	M-1
M.2 Nuclear Incident Phases	M-1
M.3 Definitions	M-1
M.4 Protective Actions	M-2
M.5 Shift from Emergency Phase to Intermediate Phase	M-4
M.6 County Operations in the Intermediate Phase	M-5
M.7 Other Intermediate Phase Operations	M-7
<b>N. EXERCISES AND DRILLS</b>	
N.1 Purpose	N-1
N.2 Exercises	N-1
N.3 Drills	N-1
N.4 Exercise/Drill Scenarios	N-2
N.5 Exercise/Drill Controllers and Observers	N-3
N.6 Exercise/Drill Critiques	N-3
<b>O. RADIOLOGICAL EMERGENCY RESPONSE TRAINING</b>	
O.1 Purpose	O-1
O.2 Overview of the County's Training Program	O-1
O.3 Purpose of the Comprehensive Training Program	O-2
O.4 Training Modules and Lesson Plans	O-2
O.5 Who is Trained to What	O-4
O.6 Training Data	O-4
O.7 Just-In-Time Training	O-4
<b>P. RESPONSIBILITY FOR THE PLANNING EFFORT</b>	
P.1 Purpose	P-1
P.2 Planning Responsibility	P-1
P.3 Review and Updates	P-1
P.4 Supporting Plans	P-2
P.5 Supporting Documents	P-2

## **APPENDICES**

- 1 Definitions and Acronyms
- 2 Emergency Planning Zone (EPZ) Map with Subareas and  
Evacuation Routes  
Evacuation Time Estimate Summary  
Description of Evacuation Regions
- 3 Emergency Response Organizations
- 4 Participating Emergency Response Agencies and Functions
- 5 Agency Responsibility Matrix
- 6 Letters of Agreement
- 7 Emergency Action Level Scheme
- 8 Notification Forms
- 9 Siren Locations
- 10 Emergency Operations Center (EOC) Communications Links
- 11 Emergency Preparedness Information (EPI) Brochure
- 12 EAS Messages
- 13 Emergency Operations Center (EOC) Floor Plan
- 14 Emergency Kits
- 15 Sector and Zone Designators for PNPP
- 16 Ashtabula County Traffic Control Points and Access Control Points
- 17 Care Centers and Emergency Worker Monitoring and Decontamination Station
- 18 Transportation Staging Areas and Pick-Up Points
- 19 Risk/Receiving Schools and Risk/Host Health Care Facilities
- 20 Emergency Worker Protective Action Guidelines Exposure Limits and  
Contamination Action Levels
- 21 SOGs Required to Implement the Plan
- 22 Cross Reference to Planning Criteria in NUREG 0654



## **A. GENERAL**

### **A.1 Components of the Overall Radiological Emergency Response Plan**

The overall Ashtabula County Radiological Emergency Response Plan is composed of two major components: the basic Radiological Emergency Response Plan and the supporting Suggested Operating Guidelines (SOGs).

This volume is the basic Radiological Emergency Response Plan for the Ashtabula County response to an emergency situation at the Perry Nuclear Power Plant (PNPP). This Plan describes the total emergency preparedness program established and implemented by Ashtabula County to assure the capability and readiness to respond to and mitigate the consequences of an emergency situation at PNPP, which impacts Ashtabula County. Included are guidelines for assessment of and response to emergency situations, descriptions of responsibilities, and the coordination within and among emergency response organizations.

The SOGs provide support for the basic Radiological Emergency Response Plan by providing the details and instructions necessary to execute the concepts described in the Plan. The SOGs provide guidance for response actions yet permit flexibility for actions and decisions, which can only be determined at the time of an emergency when the variables can be better identified and evaluated. Each organization, which may be requested to provide support in Ashtabula County, has a SOG which describes the support to be provided and the means for notification and communications. Appendix 4 lists supporting organizations.

### **A.2 Organization of the Basic Radiological Emergency Response Plan**

The Plan states the responsibilities of county and local agencies during a radiological emergency at PNPP, with emphasis on what actions are required and what agency is responsible for performing these actions. The Plan consists of 16 parts, plus appendices. Part A provides general background information pertinent to Ashtabula County and its relationship to the Perry emergency planning zones. Parts B through P consist of information in support of the corresponding planning standards “A,” “C” through “P” of NUREG-0654/FEMA-REP 1, Rev. 2, Criteria for Preparation and Evaluation of Radiological Emergency Response Plans and Preparedness in Support of Nuclear Power Plants. Section B of NUREG-0654 does not contain any planning criteria for Ashtabula County. The RERP is Annex O of the Ashtabula County All Hazards Emergency Operations Plan, which is referenced for response actions that are not specific to radiological events but are covered under an all-hazards response.

Appendix 1 is a listing of the definitions and acronyms used throughout the Plan.

Appendix 21 is a listing of the Ashtabula County SOGs with reference to the sections of the Plan supported by each.

Appendix 22 is a cross-reference that shows where each planning criterion in NUREG-0654 can be found in the Plan.

### A.3 Concept of Operations

Ashtabula County maintains a constant state of preparedness to respond to an emergency situation at PNPP by periodic plan and procedure reviews and updates, periodic training of emergency response personnel and participation in drills and exercises.

#### A.3.1 Notification

PNPP will notify Ashtabula County of an **UNUSUAL EVENT, ALERT, SITE AREA EMERGENCY OR GENERAL EMERGENCY** via the 5-Way dedicated telephone line which is monitored 24 hours a day by the Ashtabula County Sheriff's Office Central Communications. The Central Communications Dispatchers will notify agencies and individuals that are part of the county's emergency response organization, according to the pre-established notification scheme. Agencies will conduct internal notification and callout of their personnel necessary to carry out response functions.

Special facilities such as school districts, healthcare facilities, camps, and preschools will be notified by the Central Communications Dispatchers until relieved by EOC staff. Risk healthcare facilities will notify their host facilities. Additional support fire departments will be notified by the EOC Fire/EMS Coordinator.

The public will be informed of the emergency conditions and response actions through news releases issued at the Joint Information Center (JIC). The Public Information Officer will be the official county spokesperson at the JIC. For immediate protective action instructions, the public will be informed via the alert/notification system activated by the Lake County EMA or the Ashtabula County EMA or the Geauga County Department of Emergency Services.

Lake County EMA will activate the sirens throughout the 10-Mile EPZ to alert the public to tune to the Emergency Alert System (EAS). Geauga County and Ashtabula County will provide backup siren activation coverage in the event Lake County cannot sound the siren system. A protective action message will be selected and agreed upon by Commissioners in the three counties and communicated to the EAS for broadcast. The National Oceanic Atmospheric Administration (NOAA) will also instruct the public to listen to an EAS station for emergency information.

If any sirens are known to be out of service or special notification is required, fire departments within the 10-Mile EPZ, and Geneva State Park within the park grounds, will dispatch Route Alerting Teams to conduct notification as directed by the EOC Fire/EMS Coordinator.

#### A.3.2 Communications

The Ashtabula County EOC is equipped with telephone and radio communications systems to adequately carry out EOC operations and communicate with response units included in the Plan. Where radio communications are needed the EOC Communications Center can adequately support EOC operations, Amateur Radio Operators will provide communications support for care centers and other field operations as needed.

#### A.3.3 Accident Assessment

PNPP, Lake County General Health District (LCGHD), and Ohio Emergency Management Agency (OEMA)/Ohio Department of Health (ODH) field monitoring teams will independently monitor radiation levels. PNPP and ODH will assess the radiological hazard to the public and recommend protective actions for consideration by the County Commissioners. The Executive Group in Ashtabula County will ensure local conditions are taken into consideration before deciding upon protective actions. In the event of a Hostile Action Based incident, the Executive Group will coordinate with the Incident Command to ensure any Protective Action Decision (PAD) supports activities at the incident site.

#### A.3.4 Protective Response

If sheltering is recommended, persons affected by the sheltering protective action will be advised via the alert/notification system to go indoors and shut off the intake of outside air.

If evacuation is recommended, persons affected by the evacuation protective action will be advised to leave the affected area. The Sheriff's Office with assistance from local police departments and OSHP will ensure that traffic flow is maintained. The County Engineer (EOC Transportation Officer) is responsible for keeping evacuation routes clear of impediments.

Most evacuees will leave in personal vehicles. For that portion of the population without access to a vehicle, the EOC Transportation Officer will ensure transportation support is available. School districts will provide buses for transport of school children, health care facility patients, camps, and the general public. Fire departments and ambulance companies will provide ambulances for severe mobility impaired persons.

Receiving facilities for schools and healthcare facilities in the 10-Mile EPZ are prearranged. Should any problem arise in the relocation of these population groups, the School Services Representative and Health District respectively will provide assistance. The general public who request contamination monitoring or lodging will be directed to a reception center for monitoring and a care center for lodging. Fire departments are responsible for contamination monitoring and decontamination at the reception center. The American Red Cross is responsible for care center activities such as family reunification, lodging, and feeding. The Ashtabula County Dog Warden will assist in locating shelter for evacuees' pets. The Health District will ensure that acceptable health standards are maintained at care centers.

Upon evacuation of the area, the Sheriff's Office assisted by local police, Ohio State Highway Patrol and the Ohio National Guard will control access to the affected area and will conduct security patrols.

For protective actions involving the 50-mile Ingestion Exposure Pathway, the Ashtabula County Ohio State University (OSU) Extension Service Agent will assist State agencies with implementation of needed actions.

#### A.3.5 Radiological Exposure Control

Emergency workers will be issued dosimetry, potassium iodide (KI) tablets and instructions for reading and reporting doses. Response agency administrators will monitor and control the radiological exposure of personnel within their agency and report emergency worker exposures to the County Radiological Officer who is responsible for monitoring and controlling exposures of all county emergency workers. This includes ensuring operation of radiological monitoring/decontamination stations for emergency workers and for the general public at the reception center.

Protective Action Guidelines (PAGs) for emergency workers are identified in Appendix 20.

#### A.4 Emergency Planning Zone Concept

Federal regulations define two emergency planning zones (EPZs) surrounding a nuclear power plant for which emergency planning must be accomplished; the Plume Exposure Pathway EPZ and the Ingestion Exposure Pathway EPZ.

The Plume Exposure Pathway EPZ is the area within approximately 10 miles of the plant for which detailed planning is warranted for protection of the population. The 10 mile radius is modified somewhat to avoid dividing contiguous concentrations of the population by the EPZ boundary and to coincide with boundaries of local political subdivisions (cities, townships) wherever possible. The Plume Exposure Pathway EPZ is commonly referred to as the 10-Mile EPZ.

The Ingestion Exposure EPZ is the area around PNPP out to a radius of about 50 miles. The Ingestion Exposure Pathway EPZ includes the Plume Exposure Pathway EPZ. Projected radiation doses resulting from a serious incident at a nuclear power plant are not expected to be high enough in the area of the Ingestion Exposure Pathway EPZ, beyond the Plume Exposure EPZ, to require immediate protective actions for the public. Radiation doses in this area of the Ingestion Exposure Pathway EPZ are expected to result primarily from ingestion of food and water contaminated with radioactive material.

#### A.5 Subareas

Protective response may be required for part or all of the 10-Mile EPZ. Areas in close proximity to PNPP are more likely to be affected by an emergency; therefore, the 10-Mile EPZ has been divided into subareas so that the response effort can be directed toward that portion of the EPZ affected. The subarea boundaries have been identified and established based on distance from PNPP, jurisdictional boundaries, and land characteristics. Part of Ashtabula County extends into subareas 4 and 5.

#### A.6 Reentry and Recovery

Ashtabula County Commissioners will coordinate with Federal, State, and local agencies in the reentry and recovery process. After the emergency phase is terminated, the Executive Group will make preparations for and coordinate any reentry and recovery efforts that may be necessary.

## **B. ASSIGNMENT OF RESPONSIBILITY (ORGANIZATIONAL CONTROL)**

### **B.1 Purpose**

Identify all agencies and organizations that may participate in Ashtabula County's response to an emergency at the Perry Nuclear Power Plant (PNPP); to identify the individual agency and organization responsibilities for specific emergency response functions; and to identify the organizational structure for the Ashtabula County emergency response effort.

### **B.2 Agencies and Organizations Participating in an Ashtabula County Response**

Selected county, local, State, Federal and private/volunteer organizations plus the utility, that are part of the overall response effort are listed in this section, along with summary concepts of their expected contributions to the total response effort.

Appendix 4 lists the agencies and organizations that might participate in an Ashtabula County response to an emergency at PNPP. A brief description of the response functions for each group and the individual in charge are also listed.

In the event additional agencies are needed to provide position backfill or other assistance, they will be provided Just-In-Time training for their role in the response effort prior to assuming their duties.

The primary and secondary responsibilities for each group are shown as a matrix in Appendix 5.

The intent of each agency and organization to provide support and whose response functions are not covered by law, regulation or executive order, is demonstrated by the letters of agreement referenced in Appendix 6.

### **B.3 Control and Coordination of an Ashtabula County Response**

The Ashtabula County Emergency Operations Center (EOC) Executive Group has the overall responsibility for decision-making and coordination of an Ashtabula County response to an emergency situation at PNPP.

The EOC Executive Group is composed of the County Commissioners, the Emergency Management Agency Director or representative and the Sheriff or a

Sheriffs' Representative.

To ensure that a decision-making capability will be available for emergency response if the EOC Executive Group cannot be assembled, the following succession of authority will be followed:

- Commissioners
  - President
  - Member
  - Member
- Emergency Management Agency Director
  - EMA Deputy Director
  - EMA Director's designee
- Sheriff
  - Sheriff's designee

To assist the Executive Group, individuals with pre-assigned functions and responsibilities staff the EOC. A primary and alternate should be assigned for each staff position ensuring a continuous 24-hour operation. Shift changes for the EOC staff positions should occur in a staggered fashion to ensure continuity in EOC operations.

In any event that an Incident Command Post (ICP) is established, the Executive Group will coordinate with the Incident Command (IC) to ensure any PAD issued supports the activities in the area under the IC control.

#### B.4 Continuous Staffing of Communications Links

The Ashtabula County EMA Director will ensure that resources are available to provide for continuous operations of the overall emergency response effort and the EOC, on a 24-hour a day basis. Shift coverage and shift duration will be determined at the time of the emergency. As each shift reports, there will be a briefing and turnover of responsibility.

Ashtabula County maintains fulltime (24-hour) capability at the Communications Center for radio dispatching as well as telephone notification. The Dispatch Center has the 24-hour capability to receive notification of a radiological



emergency at PNPP and to relay this notification to county agencies participating in the emergency response. The emergency notification sequence is described in detail in Part E of this plan.

#### B.5 Legal Basis for the Plan

Section 5502.21 through 5502.51 of the Ohio Revised Code establishes the County as the primary local planning unit for response to a radiological emergency and grants the authority to the County for the response.

The Ashtabula County Emergency Management Agency Director has the primary responsibility for coordinating the emergency response to a radiological emergency.

The County Commissioners have the authority to direct County agencies. Under Sections 5502.21 through 5502.51 of the Ohio Revised Code, as well as under a countywide agreement, the Commissioners also have the authority to coordinate the emergency response of subdivisions within the County.

Participating agencies and organizations from subdivisions such as cities, villages, and townships execute their response during an emergency within their usual authority to protect the public safety.

## **C. EMERGENCY RESPONSE SUPPORT AND RESOURCES**

### **C.1 Purpose**

To identify the resources available to support the Federal Response and to identify other organizations which may provide support to Ashtabula County.

### **C.2 County Resources Available to Support the State and Federal Response**

Ashtabula County resources available to support the state and Federal response include:

- Use of the Northeast Ohio Regional Airport in Denmark Township, 2382 Airport Rd. Jefferson, Ohio.
- Office space at or near the EOC located in Jefferson, Ohio.
- Assist in providing clerical support.
- Assist in locating lodging accommodations, providing County road maps and arranging for meetings with local officials.
- Ground transportation.
- Limited use of County pool vehicles.
- Communications such as telephone lines, radio frequencies, facsimile machine.

### **C.3 Sources of Additional Assistance**

The EMA Director will evaluate requests for assistance or additional resources from county or local agencies. These requests will be satisfied from resources within Ashtabula County to the extent possible. A resource directory, listing locations and types of equipment, is on file and readily available in the EOC for emergency use. Resources that have Letters of Agreement with the EMA are listed in Appendix 6. The Ashtabula County Emergency Operations Plan will be utilized for resources and any requests not addressed in the Radiological Emergency Response Plan.

If requirements cannot be satisfied with resources from within the county, the EMA Director will request additional assistance from the OEMA. These requests include resources of the Federal and State Governments and counties around other Energy Harbor plants that have radiological emergency response capabilities.

The Federal Radiological Monitoring and Assessment Center (FRMAC) location is referenced in the Ohio Plan for Response to Radiation Emergencies at Licensed Nuclear Facilities.

Note: State resources may take 3 hours or longer to respond. Federal resources may take 72 hours or longer.

#### C.4 Representation at the Emergency Operations Facility

The county will not send any representative to the PNPP Emergency Operations Facility.

## D. EMERGENCY CLASSIFICATION SYSTEM

### D.1 Purpose

To ensure that a standard emergency classification system and action level scheme is used by PNPP and the response organizations of Ashtabula County for offsite response measures.

### D.2 Emergency Classification System

The emergency classification system consists of four levels. These levels are arranged in ascending order of emergency severity and serve as initiators of specific response actions by Ashtabula County emergency response agencies. These classifications from the least serious to the most serious are: UNUSUAL EVENT, ALERT, SITE AREA EMERGENCY and GENERAL EMERGENCY.

#### Classification Descriptions:

**UNUSUAL EVENT:** Events out of the ordinary are in progress or have occurred which indicate a potential degradation of the level of safety in the plant or a potential security event. No releases of radioactive material requiring an offsite response or monitoring are expected unless further degradation of safety systems occurs.

**ALERT:** Events are in progress or have occurred which involve an actual or potential substantial degradation of the level of safety of the plant or a security event that involves possible life-threatening risk to site personnel or equipment because of hostile action. Any radioactive releases occurring are expected to be well below the U.S. Environmental Protection Agency (EPA) Protective Action Guideline (PAG) exposure limits.

**SITE AREA EMERGENCY:** Events are in progress or have occurred which involve actual or likely major failures of plant functions needed for protection of the public or security events that result in intentional damage or malicious acts toward site personnel or equipment needed for the protection of the public. Any releases are not expected to exceed U.S. EPA Protective Action Guideline exposure limits offsite.

**GENERAL EMERGENCY:** Events are in progress or have occurred which involve actual or imminent substantial fuel core degradation or melting with a potential for loss of containment integrity or security events that result in an actual loss of physical control of the facility. Releases may exceed U.S. EPA Protective Action Guideline exposure limits offsite.

### D.3 Action Level Scheme

The County Commissioners will decide on emergency actions to be taken in Ashtabula County. Decisions will be made in consultation with the EOC Executive Group, based on recommendations made by PNPP, the State of Ohio and the Ashtabula County EOC Staff, as well as the emergency classification of the incident. Protective action recommendations will be coordinated with Lake and Geauga counties and communicated to the State of Ohio and PNPP.

Some emergency response actions will be taken automatically while others will be at the discretion of the Commissioners. All decisions for protective action decisions will be based on existing local conditions and should be coordinated with the Incident Command in a Hostile Action Based incident to ensure they do not jeopardize the safety of the responders or public and do not reveal sensitive or classified information. The Action Level Scheme in the Appendices depicts primary emergency response actions that may be employed for each class of emergency.

Note: Emergency Action Levels are reviewed on an annual basis.

## **E. NOTIFICATION METHODS AND PROCEDURES**

### **E.1 Purpose**

To describe the process for notification of response agencies and organizations in Ashtabula County and the public within the 10-Mile EPZ.

### **E.2 County Notification**

After the declaration and classification of an emergency at PNPP, the PNPP Control Room will notify Ashtabula County using the 5-Way Dedicated Telephone Line. Terminals of this line are located at PNPP, OEMA/OSHP, Geauga, Lake and Ashtabula counties. Within Ashtabula County, the line is in the EOC with an extension to the 24-hour Alert Warning Point located in the Sheriff's Office, Central Communications. Commercial telephone is the back-up for this system.

The initial notification message from the PNPP will be received and recorded on an Initial Notification Form. Initial notification will include a classification of the emergency, a description of the emergency condition and protective actions recommended by PNPP. The person who receives the message will read back information as necessary, ensuring the message is verified. Upon completion of an Initial Notification Form, notification is made to the appropriate county agencies, organizations and individuals using the Notification SOG. The primary means of notification are pager, telephone and radio.

Follow-up information will be received and recorded on a Follow-up Notification Form. Follow-up notification will include a classification of the emergency, protective actions recommended by PNPP and the basis for the recommendations, meteorological data, off-site release information, release rates, accident type, projected off-site doses, field survey data, estimates of surface contamination, general information and current plant status data. The person who receives the message will read back information as necessary to ensure the message is verified. Portions of the Follow-up Notification form may be computer generated and electronically transmitted to the State and Counties.

Protective Action Recommendations from the State of Ohio will be recorded on a State of Ohio Protective Action Recommendation Form and transmitted electronically. Bases for recommendations are: data received from the plant, field survey data, plant status, meteorological data, type of accident and general information. The person who receives the message will request clarification to ensure the message is correct.

During an HAB incident, these notifications may not follow standard licensee-to-county methods. Notifications from the county to PNPP will be made using standard communication protocols, which include caller verifications.

### E.3 Agency Notification

After notification of the emergency classification from PNPP, Central Communications will begin notification of emergency response agencies and individuals. The depth of notification is dependent on the Emergency Classification Level.

Once the agency receives the notification, each agency will initiate its own internal notification procedure based on the emergency classification level.

Notification will be made by use of the "Notification SOG" which is kept on file at Central Communications. The Notification SOG contains an updated listing of specific names, alternate contacts and phone numbers of emergency response agencies and individuals according to the emergency classification level.

### E.4 Notification of the Public

#### E.4.1 Alerting

The public in the plume exposure EPZ in Ashtabula County will be alerted to an emergency at PNPP by use of a siren system. Sirens will be activated and appropriate EAS messages initiated after the protective action decision.

Back-up route alerting teams with mobile public address capability will travel through designated areas of the 10-Mile EPZ when the following conditions exist: 1) the GENERAL EMERGENCY level is reached, 2) there is a known "out of service" siren for that designated area, and 3) a protective action has been recommended for that designated area. "Out of Service" sirens are tracked in the Ashtabula County EOC from the latest siren test and there is battery back-up and Control and Status Monitoring capability.

The siren system will be activated for a GENERAL EMERGENCY with protective actions recommended for the general public. The County Commissioners will coordinate the timing of the activation of the siren system with Geauga and Lake counties. This coordination will occur via the Executive Discussion Line (EDL). Lake County will activate the siren system at the coordinated and designated time. Should a malfunction occur, Geauga then Ashtabula County, in that order will activate the siren system. As an alternative to the primary ANS should it fail, Ashtabula County would use an outbound telephonic notification system to alert and notify the public in the EPZ, as well as continue to broadcast the EAS message.

A silent test of the sirens is conducted every week and an audible test is performed quarterly.

In the unlikely event the PNPP would declare a GENERAL EMERGENCY or recommend a protective action prior to activation of the county EOCs, Lake County Central Communications Dispatchers will sound all sirens and initiate the appropriate EAS message.

In the event a Hostile Action Based incident reaches General Emergency, the Executive Group will coordinate with Incident Command to gauge whether activation of sirens or EAS could interfere with response actions being implemented. Other means of notification addressed in this section may be used.

#### E.4.2 Emergency Alert System (EAS)

The Emergency Alert System (EAS), Local Program Control Station will initiate broadcast of emergency messages to the public. EAS stations have the capability to broadcast emergency messages 24 hours a day, 7 days a week and have adequate signal strength to cover the 10-Mile EPZ. The National Oceanic and Atmospheric Administration (NOAA) will instruct the public to refer to an EAS station for emergency information, via Weather Radio.

There is an agreement among Geauga, Ashtabula and Lake counties and EAS stations to broadcast emergency information. LP-1 and LP-2 stations participate in the Central and East Lakeshore Ohio Operational Area EAS System Plan.



For an emergency at PNPP, Lake County will be the lead agency to activate EAS for all three counties. In the event Lake County cannot fulfill its responsibility, Geauga then Ashtabula County, in that order, will become the lead county to activate the EAS.

For an emergency at PNPP, the EMA Director or alternate is authorized to activate EAS, with approval from the County Commissioners. In the event of a fast developing GENERAL EMERGENCY, the Lake County EMA Director or alternate or the on-duty supervisor of the Lake County Central Communications Division is authorized to activate EAS.

At the GENERAL EMERGENCY classification, a message instructing the public to take a particular protective action will be broadcast as needed, typically every 15 minutes, until the protective action advisory is lifted. Geauga, Ashtabula and Lake counties will monitor EAS broadcasts to ensure the integrity of the information being provided. In addition, Public Inquiry and Media Monitoring personnel at the Joint Information Center (JIC) monitor television, radio and the Internet to identify any incorrect information. If information is incorrect, a spokesperson at the JIC will conduct a media briefing to correct the misinformation.

#### E.4.3 Special Notification

The School Services Representative in the EOC will notify the risk and support school districts.

Special notifications for hearing impaired, sight/mobility impaired, large employers, campgrounds/recreation areas and group homes will be conducted in person and/or by telephone, by EOC Staff according to procedure. A list of sight/mobility, special needs and hearing impaired persons is maintained by agencies that deal with these special needs individuals within Ashtabula County.

Special notifications will also verify any transportation needs. Information will then be communicated to the Transportation Staging Area. Hearing impaired persons will be instructed to seek assistance at the home of a neighbor or relative. If this is not possible, the special notification team will re-notify the individual if the emergency escalates or when protective actions are recommended. Once notified, group homes, large employers, campground/recreation area staff will then notify personnel of the emergency using internal procedures.

#### E.4.4 Warning

Once alerted, the public in the plume exposure EPZ will tune to an EAS station to receive warning messages. EAS stations serving Ashtabula County are listed in local telephone directories and the Emergency Preparedness Information Brochure. EAS messages will be repeated as necessary.

EAS messages will be succinct, containing only sufficient information for people to take the appropriate action(s). For example, EAS messages for the public will: identify the authority issuing the message; identify the power plant; give the Emergency Classification Level (ECL) and a statement about the current status of conditions due to the emergency; give an evacuation or sheltering statement; call attention to REP-specific emergency information sources; and advise the affected and potentially affected population to stay tuned for more information.

Information generally not included in EAS messages but more suitable for Special News Bulletins (SNB) or Special Information Bulletins (SIB) may include but not be limited to: identification of protective actions for the general public; identification of reception centers and care centers for the general public; instructions on how to maximize protection when sheltering; provision of public inquiry numbers to the public; and reminders of what to take when evacuating.

All EAS messages will be coordinated and approved for release by the Commissioners in Lake, Geauga and Ashtabula counties before they are broadcast, except in the event of a fast developing GENERAL EMERGENCY. In this situation, Lake County will activate the EAS system and issue an EAS message prior to activation of the counties' EOCs.

Coordination for EAS message content and selection will be conducted via the Executive Discussion Line (EDL). As the lead county, Lake County will activate the EAS System. Copies of EAS messages released for broadcast will be sent to the PIO at the JIC by the PIO Liaison in the EOC.

Any EAS or SNB as the result of a hostile action based incident should be vetted through the Incident Command (IC) for security sensitive information before being released to the JIC.

Warning messages for schools, large employers, group homes, and campground/recreation areas will be completed by internal procedures once notification is received.

Ohio Emergency Management Agency (OEMA) is responsible for notifying the Federal Aviation Administration (FAA) and rail authorities to restrict air and rail traffic over and through the Plume Exposure EPZ and the U.S. Coast Guard, assisted by the Ohio Department of Natural Resources (ODNR) and Ohio Department of Transportation (ODOT), to warn boaters. NOAA broadcasts are also used for this notification via Weather Radios.

If evacuation is the protective action recommendation and schools in those subareas are in session and were not previously relocated, students will be evacuated out of the plume exposure EPZ to the reception center and then to a care center until they are picked up by parent or guardian.

#### E.4.5 Verification of Notification

The public will be instructed to provide visual indication that the alert and warning messages have been received and understood in the manner described in the Emergency Preparedness Information Brochure.

Teams will circulate through the 10-Mile EPZ after sirens are sounded at the GENERAL EMERGENCY classification. Teams will check residences and businesses to ensure they have been notified. The teams will make personal contact with residences or businesses not notified and inform the individuals to tune in their televisions or radios for emergency information.

#### E.4.6 Alert/Warning Time Projection

The initial alerting siren signal and initial warning message will be delivered promptly on an area basis to the 10-Mile EPZ in Ashtabula County following the decision to notify the public of protective actions. The special arrangements described in E.4.1, E.4.2 and E.4.3 will assure the public is notified within approximately 45 minutes.

## **F. EMERGENCY COMMUNICATIONS**

### **F.1 Purpose**

To describe the emergency communications available for use in Ashtabula County in the event of an emergency at PNPP.

### **F.2 Emergency Communications Systems**

The following communications systems will be available in Ashtabula County. A link with each system described is available in the Ashtabula County EOC.

#### **Dedicated Telephone System**

The 5-Way Dedicated Telephone Line is the system by which the PNPP will provide incident notification, incident classification, and follow-up information to Ashtabula, Geauga and Lake counties and the State of Ohio. This telephone system will also serve as the primary radiological information channel during the incident.

Extensions are located in the following facilities:

- (1) PNPP Control Room,
- (2) PNPP Technical Support Center
- (3) PNPP Simulator (for drill use only)
- (4) PNPP Emergency Operations Facility
- (5) Lake County Central Communications
- (6) Lake County Emergency Operations Center
- (7) Geauga County Sheriff's Dispatch Office
- (8) Geauga County Emergency Operations Center
- (9) Ashtabula County Sheriff's Central Communications
- (10) Ashtabula County Emergency Operations Center
- (11) Ohio Emergency Management Agency

Commercial telephone with pre-programmed speed dial capability is the backup to the 5-Way Telephone on site.

Response organizations that do not answer a notification call on the 5-Way Dedicated Telephone will be contacted by PNPP via an alternate communication method.

### Special Telephones

The Executive Discussion Line (EDL) is a telephone with conferencing capability in Geauga, Lake and Ashtabula counties' EOCs and the State EOC in Columbus. Executive groups in the counties can coordinate protective action decisions with each other, with input from the State via the EDL. PNPP may also be brought into the conversation for information, if requested. Generally, Lake County will activate the EDL conference call.

The JIC Telephone provides a link between the counties' EOCs and the Joint Information Center (JIC). Updates on emergency status and county response and public information activities between the EOC and JIC will be communicated over the JIC Telephone by the PIO Liaison in the EOC and the PIO at the JIC.

### Regular Telephone

Regular telephones are available in the EOC and Communications Center for use in notifying certain emergency response groups and as a back up for notifying others. Phone calls to the EMA's main number will be forwarded to the appropriate EOC position. Approximately 18 telephone lines will be available for use by the EOC staff.

### Radio

Two-way radio communications equipment is available in the Communications Center located adjacent to the EOC. Radio will be used to notify certain emergency response groups and to maintain communications with them. Bus drivers can communicate with respective school district transportation supervisors through bus radios.

The Ashtabula County Amateur Radio Club provides radio communications between the EOC, care centers and the Ashtabula County American Red Cross Chapter House. The radio club can also provide communications between the EOC and other emergency response efforts in Ashtabula County.

### Pagers

Pagers will be used to notify key response individuals and groups. The agencies that have pagers are indicated in the Notification SOP.

### Fax Machines

Fax machines are available in the EOC and the Sheriff's Office Communications Center. The fax machine is used primarily to receive and transmit emergency information from PNPP, the JIC, Geauga and Lake counties EOCs and OEMA. Also the fax will be used to send and receive EAS messages to/from the PIO at the JIC.

### Television & Radio

Television and radio are available in the EOC for monitoring Emergency Alert System statements and news releases made by local and national television/radio stations. Public Inquiry, working with the Executive Direction and Control Group, the PIO Liaison, and key EOC staff is responsible for monitoring television and radio broadcasts in the EOC.

### E-DATA

E-DATA allows the State, Lake, Geauga and Ashtabula EMAs to access selected plant data on an approximate real time basis. The data is connected via modem and displayed on a PC with print capability.

### Electronic Notification

An electronic notification system will be utilized by the EMA for initial notification to EOC support staff.

### EMAIL

Ashtabula County EMA maintains several email accounts available for communications

## Social Media

Ashtabula County maintains a presence on several social media platforms that can be utilized for emergency communications.

County officials can communicate with Federal response organizations through the Ohio EMA. Ohio EMA's primary communications with Federal agencies will be by telephone, with radio as a supporting back-up system (See State Plan).

### F.3 Communications Center

The Communications Center is operated 24/7, thereby ensuring that notification from PNPP will be received and that continuous coverage of the 5-Way Dedicated Telephone is maintained until the EOC is activated.

The initial notification of an emergency at PNPP will be received in the Communications Center or at the EOC on the 5-Way Dedicated Telephone. As a back up, the initial notification may be received by commercial telephone, fax, or radioed by one of the other counties.

After an emergency notification is received and the Radiological Officer arrives in the EOC to assume 5-Way Dedicated Telephone Line responsibilities, control of the Communications Center shifts to the Executive Group and remains there until the emergency is terminated.

### F.4 WebEOC/Message Center

WebEOC software is used for internal message flow and documentation of messages and logs used by the EOC. In the event WebEOC is unavailable, a Message Center will be staffed in the EOC by a message controller, runners and support staff. Key information is recorded on EOC status boards.

### F.5 Interagency Communications

The means of communications to be used to alert emergency response personnel in agencies and organizations are listed in the Appendices.

F.6 Communications with Medical Units

EMS units have communications capability with hospitals and medical facilities and the EOC. The EOC has communications capability with these facilities also.

F.7 Testing the Emergency Communications System

The entire communications system will be tested as described in Section N.



## **G. PUBLIC EDUCATION AND INFORMATION**

### **G.1 Purpose**

To describe the process for providing information to the public on a periodic basis about how they will be notified and what their initial actions should be in an emergency. To establish the principal points of contact with the news media for dissemination of information and to describe the procedure for coordinated dissemination of information to the public.

### **G.2 Dissemination of Public Information**

A Public Information and Education Program for members of the general public, including transients, within the 10-Mile Emergency Planning Zone (EPZ) surrounding the Perry Plant, has been established in coordination with the State of Ohio, EPZ counties and the Perry Nuclear Power Plant. The Public Information and Education Program includes the following methods for dissemination of information related to a nuclear emergency at the Perry Plant:

#### **Emergency Preparedness Information Brochure**

An Emergency Preparedness Information (EPI) brochure is distributed annually to residents within the 10-Mile EPZ or anytime, upon request. This ensures that new EPZ residents are informed of emergency planning information and captures emergency planning information changes in one published document. The EPI Brochure is the primary source of public information. The brochures provide members of the general public with information on the following:

- educational information on radiation;
- contact for additional information;
- protective measures, evacuation routes, care centers, sheltering, respiratory protection, and Potassium Iodide (KI) information;
- special needs for the disabled.

#### **School Letters to Parents**

Information in either the form of a letter or an information packet is sent annually by the school district to parents of school children in the 10-Mile EPZ.

#### **Web Page**

The EPI brochure in its entirety and the means to update the Special Needs Cards is available on the County's EMA website.

#### Information for the Transient Population

Posters and information packets that give emergency information to the transient population in those portions of Ashtabula County that are in the EPZ are placed in hotels, and throughout the parks. The posters and packets instruct the transient population to tune to an Emergency Alert System station for information on the emergency. Also during an emergency, special notification is made to the parks by telephone and in person. This information is updated annually, as needed, and the materials are replaced as required.

### G.3 Public Information During An Emergency

The Ashtabula County Public Information Officer (PIO) has the primary responsibility for providing information to the public in the 10-Mile EPZ in Ashtabula County. The PIO will be assisted by the EMA Director and PIO Liason and will receive any necessary support from PNPP.

Public information during an emergency will be disseminated from the Joint Information Center (JIC), which is located at Auburn Career Center in Concord, Ohio. The JIC is operated and maintained by the licensee. The JIC is the point of contact with news media representatives for Ashtabula County after the JIC is activated, which may occur at any emergency classification. In the event the JIC is not activated, the PIO may disseminate information from the EOC.

After the JIC is activated, the PIO will report to the JIC. The PIO will coordinate public information and news releases with representatives from Geauga and Lake counties, the State, PNPP, and the Incident Command. The PIO will maintain telephone communications with the PIO Liaison in the Ashtabula County EOC to ensure that information is readily available. The PIO Liaison ensures that the EOC Executive Group is aware of information being released to the news media. The Commissioners will be aware of and approve any news releases which affect Ashtabula County prior to dissemination to the news media. The PIO will receive information from the PIO Liaison via the telephone. The PIO Liaison will also send copies of EAS messages electronically to the PIO.

If the Ashtabula County Commissioners determine a need to issue news releases prior to activation of the JIC, these releases will be made by the PIO at the

Ashtabula County EOC. To the extent practicable, the Commissioners will coordinate any such news releases with Geauga and Lake counties.

PNPP will provide clerical support for the Ashtabula County PIO at the JIC. After the PIO goes to the JIC, any residual public information duties to be performed at the county EOC will be performed by the PIO Liaison.

#### G.4 Public Inquiry

Public Inquiry will be exercised by use of separate "hotline" telephones in the EOC. Public Inquiry workers are continuously updated on the status of the emergency and are capable of answering questions relative to the emergency. The PIO Liaison coordinates information frequently with the Public Inquiry workers and key EOC staff.

Public Inquiry telephones will also be operated at the JIC by PNPP, and by the State, Geauga and Lake counties from their respective locations. Telephone numbers for the hotlines are listed in Emergency Public Information materials and will be provided to the public through news releases.

Public Inquiry personnel are trained to identify trends in the questions asked of them that indicate the presence of misinformation and to report trends to the PIO Liaison for clarification to the public.

The PIO Liaison and EOC Operations Coordinator will handle social Media monitoring and response for an Unusual Event. The PIO Liaison and Public Inquiry personnel will handle social media monitoring and response at the Alert level. If an event escalates to a Site Area Emergency or General Emergency, social media monitoring and response will be turned over to the Ohio VOST group, or similar entity in their absence or unavailability.

The EOC Operations Coordinator, PIO Liaison, and Public Inquiry personnel have access to social media to monitor incoming information requests and to identify any misinformation or additional threats. Any social media posts related to security threats or incident-specific content will be forwarded to Incident Command.

#### G.5 News Media Briefing

At least annually, a briefing or distribution of media information packets will be provided for members of the news media. This briefing or mailing is designed to acquaint members of the media with the operation of the JIC and points of contact for public information during an emergency. PNPP will be the lead group

for preparing and conducting the briefing or mailing, with participation by representatives from Ashtabula, Lake, and Geauga counties, the State of Ohio and FEMA.

## **H. EMERGENCY FACILITIES AND EQUIPMENT**

### **H.1 Purpose**

To identify facilities and equipment available to support the Ashtabula County response to an emergency at PNPP: To establish the staffing pattern for the Emergency Operations Center (EOC).

### **H.2 Ashtabula County Emergency Operations Center (EOC)**

#### **H.2.1 Facility**

The Ashtabula County EOC is located at 17 North Market St. in Jefferson, Ohio. The Sheriff's Central Communications is located a couple of blocks away at the Ashtabula County Justice Center in Jefferson, Ohio. The EOC is the facility where the direction and control of emergency response activities are implemented. It provides a work area for personnel who staff the EOC.

#### **H.2.2 Equipment**

Some of the equipment available includes:

- Tables and chairs
- Regular telephones (approximately 18)
- 5Way Dedicated Telephone (dedicated phone to PNPP, State EOC, Geauga and Lake counties)
- Executive Discussion Line (commercial telephone with bridging capabilities to Geauga and Lake counties and the State EOC. PNPP may also be added)
- JIC telephone (link to the Joint Information Center)
- Siren encoder
- VHF radio (in the Sheriff's Office Central Communications) and amateur radio communications (in the EOC)
- Maps, display boards and EOC Status Board
- Television and AM/FM radio
- Emergency plans and SOG's
- Crisis Communications (a system similar to Reverse 9-1-1)
- Copier
- First Aid Kit
- Fax

- Computers and printers
- Multi-Agency Radio Communications System (MARCS)
- Cellular telephones
- EAS encoder
- Private area for Executive Direction and Control
- Radiological, clerical and communications supplies

There are restroom facilities readily available at the EOC. Food and lodging facilities are located in the EOC. Emergency diesel generators provide backup power to the Sheriff's Office Central Communications and the EOC in the event the normal power source is lost.

### H.2.3 Staffing

The EOC may be partially activated for an Alert. It will be activated for a Site Area Emergency or General Emergency. The EMA Director will activate and direct the operations of the EOC. The EOC will be declared operational when all key staff based on the emergency are present.

### H.2.4 Security

The Sheriff's Office establishes security for the EOC at the Alert classification. Security badges will be issued to EOC Staff, which may include representatives from the State of Ohio and Federal agencies. Positive identification is required to gain access to the EOC.

## H.3 Emergency Equipment and Kits

### H.3.1 Types of emergency kits in Ashtabula County include:

- Red Cross Mass Care Kit
- Personnel Decontamination Kit
- Radiological Monitoring Kit

The general contents of each kit type are shown in the Appendices. Detailed inventories of these kits are contained in the kit or applicable SOGs. If respiratory equipment is needed, local fire departments will use their own selfcontained breathing apparatus (SCBA).

### H.3.2 Radiological Emergency Equipment

Radiological monitoring equipment is provided to local emergency response agencies. The number and contents of the equipment distributed in the county is based on the emergency response duties of specific agencies. Dosimetry packets will also be available for emergency workers. Packet contents are listed in Section K, Radiological Exposure Control.

Agencies' Dosimetry Coordinators are instructed to inventory and operationally check all survey equipment quarterly. Radiological monitoring kits issued to local emergency response agencies are calibrated or exchanged annually. Dosimetry packets are inventoried and operationally checked prior to and after each use. Directreading dosimeters are calibrated and leak tested annually; permanent record dosimeters (PRDs) are replaced annually. Maintenance of this equipment is the responsibility of Ashtabula County and the OEMA Resident Radiological Analyst.

In addition to the State issued radiological instrument sets, local safety forces responsible for radiological monitoring and decontamination of emergency workers and the general public also utilize portal monitors. The portal monitoring equipment meets the Federal Emergency Management Agency (FEMA) standard for portal monitors as stated in the Federal Register and is specifically designed for use by offsite emergency responders.

Portal monitors are available for use at facilities throughout Lake, Geauga and Ashtabula counties that are designated as public reception centers or emergency worker monitoring centers. A comprehensive training and inspection program for the portal monitoring equipment has been designed in cooperation with Geauga and Lake counties and OEMA. The use of portal monitors greatly reduces the initial monitoring time and procedural staffing requirements for local safety force personnel.

#### H.4 Central Location for Receipt and Coordination of Field Monitoring Data

Ashtabula County does not perform field radiological monitoring and thus has no provisions for a central location for the receipt and analysis of field monitoring data and the coordination of sample media. However, the Ohio EMA Liaison in the Ashtabula County EOC maintains communications with the State EOC and can relay information from the State of Ohio field monitoring teams pertinent to Ashtabula County to the Ashtabula County Radiological Officer and Executive Direction and Control Group.

Coordination of the collection of sample media of State and Lake County field monitoring teams is discussed in the State of Ohio Plan for Response to Radiation Emergencies at Licensed Nuclear Facilities.



## **I. ACCIDENT ASSESSMENT**

### **I.1 Purpose**

To describe the accident assessment and radiological monitoring activities in that portion of the 10-Mile EPZ in Ashtabula County.

### **I.2 Radiological Monitoring and Accident Assessment**

The Ohio Department of Health (ODH)/Ohio Emergency Management Agency (OEMA) share the responsibility for accident assessment in the 10-Mile EPZ. The County will provide logistical support for these activities as requested and as available. ODH is responsible for supplying Potassium Iodide (KI) to the Ohio Emergency Management Agency (OEMA) Resident Radiological Analyst for pre-distribution to emergency workers, staff at institutions and the institutionalized, in advance of an incident. ODH has also made KI available to the general public; local Health Districts will have a supply available at care centers if an evacuation is recommended.

OEMA/ODH may send field monitoring teams equipped with radiological survey instrumentation to that portion of the 10-Mile EPZ in Ashtabula County, following the declaration of an Alert or higher level of emergency at PNPP. These teams will report to a designated staging area.

The OEMA/ODH will dispatch radiological emergency response teams to designated field monitoring locations to monitor for radioactive releases with instruments that have the capability to detect and measure radioiodine concentrations in the air as low as  $1 \times 10^{-7}$  microcuries per cubic centimeter in any weather.

The State dose assessment team will assess the hazard consequences of any radiological releases from PNPP based on OEMA/ODH field monitoring results and data from PNPP. This assessment will be given to the Governor or his representative at the State EOC. The Governor or his representative, in consultation with other members of the Executive Group, will formulate recommendations for protective actions. These recommendations will be transmitted to the Lake County Executive Group (and to Geauga and Ashtabula counties) using the State of Ohio Protective Action Recommendation form and Supplemental Action form. The recommendation for the general public, emergency workers and institutionalized to take KI will be made by ODH at the General Emergency classification.

Monitoring readings may also be taken by the Lake County General Health District (LCGHD) field monitoring team(s). The LCGHD Field Monitoring Team Coordinator at the EOC will coordinate the activities of the team(s). The team(s) is equipped with a mobile radio and is able to transmit information to the Lake EOC. The information is shared with the State EOC, Ashtabula, and Geauga's EOCs and PNPP upon request.

The Ashtabula County Commissioners will use State and PNPP recommendations, along with other information, as the basis for determining protective action decisions for the public in the 10-Mile EPZ in Ashtabula County. The decision on protective actions to be taken in the 10-Mile EPZ in Ashtabula County will be made in consultation and coordination with the other counties, to the extent practicable.

## **J. PROTECTIVE RESPONSE**

### **J.1 Purpose**

To describe the process for choosing the protective actions to be taken in Ashtabula County in response to an emergency at PNPP; To describe these protective actions and the means for carrying them out.

### **J.2 Potential Protective Actions**

#### **J.2.1 Plume Exposure Pathway EPZ (10-Mile EPZ)**

There are two types of protective actions for the public that might be recommended by the County Commissioners for the 10-Mile EPZ: Sheltering or Evacuation. Potassium Iodide (KI) may be recommended as a supplement to these.

Sheltering may be recommended for a rapid passage of a plume or when weather conditions indicate that sheltering would be the most effective protective response. If sheltering is the protective response adopted, the public will be instructed to do the following:

Go indoors, preferably to the basements or interior rooms and remain there until notified otherwise.

Close all doors and windows.

Turn off air conditioners, ventilation systems, and window fans.

Adjust thermostat settings to minimize air intake.

Monitor a radio or TV for emergency information.

Evacuation involves instructing the public to leave the affected area along designated evacuation routes. Residents outside the area affected by the evacuation order may be instructed to go indoors and monitor an EAS station.

As a supplement to Evacuation or Sheltering, provisions have been established for ODH to recommend the ingestion of KI by the general public, emergency workers and the institutionalized and staff in the affected subareas.

### J.2.2 Ingestion Exposure Pathway EPZ (50-Mile EPZ)

The State of Ohio has primary responsibility for determining protective actions in the 50-Mile Ingestion Exposure Pathway EPZ. Agricultural information will be maintained by the State for ingestion activities. Ashtabula County will respond to requests from the State for information and action at the time of the emergency. The Ohio State University (OSU) Extension Agent, in coordination with the Ohio Department of Agriculture, will contact large crop and milk producers in Ashtabula County to ensure food production is halted and livestock and poultry are placed on stored feed.

There are several protective actions that might be required in the Ingestion Exposure Pathway EPZ, such as:

- Relocation
- Placing farm animals on stored feed
- Bringing drinking water from sources outside the EPZ
- Bringing milk from sources outside the EPZ
- Decontaminating or destroying food stuffs
- Decontamination of structures and land areas
- Restriction of access to areas
- Temporary embargo

Protective actions for the Ingestion Exposure Pathway EPZ are further described in The Ohio Plan for Response to Radiation Emergencies at Licensed Nuclear Facilities.

### J.3 Determination of Protective Actions

Responsibility for protective action decisions in the Plume Exposure Pathway EPZ in Ashtabula County rests ultimately with the Ashtabula County Commissioners. They reach their decisions by weighing information, data, and recommendations from the State, PNPP, local sources and the Ashtabula County EOC Staff. The decisionmaking process involves weighing the benefits to be gained versus the risks involved in a particular action.

The County Commissioners will also consider Protective Action Guides for the Plume Exposure Pathway EPZ, as described in "EPA400R92001, Manual of Protective Action Guides and Protective Actions for Nuclear Incidents", and Protective Action Guides developed by the FDA for the ingestion of food, water, and milk.

There are many variables to consider in making protective action decisions for the 10-Mile EPZ, such as:

- Projected and actual radiation dose.
- Portion of 10-Mile EPZ at risk.
- Time available to take an action to significantly reduce radiation doses.
- Radiation dose pathway.
- Resources available.
- Local weather and road conditions
- PAD driven by EAL without release of radiation.
- Will the PAD put the general public in danger in the event of a hostile based incident (evacuation routes or sheltering inside Incident Command controlled area)

Following receipt of a protective action recommendation from PNPP, the County Commissioners will discuss various protective action options with the Geauga and Lake counties' Commissioners. The Ashtabula County Commissioners will wait a suitable amount of time for the State to issue its protective action recommendations based on the data received before initiating protective actions at the county level. However, if there is a delay in the protective action recommendation from the Office of the Governor, the County Commissioners of the three counties may determine protective actions based upon the PNPP recommendation and local conditions.

Following receipt of a protective action recommendation from the State, the County Commissioners will compare PNPP's recommendation with the Governor's Office recommendations and then, in coordination with Geauga and Lake counties' Commissioners promptly decide on a protective action, related EAS message and time for siren activation.

If the Counties cannot agree upon a protective action decision, the decision will be made in accordance with the more conservative protective action recommendation received from the State or PNPP provided that the more conservative protective action would involve an area within either Ashtabula and/or Geauga Counties. The more conservative recommendation may be evacuation rather than sheltering and/or involve a larger geographic area. Lake

County would have the right of decision if the protective action recommendations of both the PNPP and Ohio EMA involve Lake County only.

In the event of a Hostile Action Based incident any PADs would be coordinated with the Incident Command. An HAB PAD may only impact immediate area around facility if there is no radiological release or the potential is low for a release.

#### J.4 Sheltering

If the County Commissioners recommend Sheltering for Ashtabula County subarea 4 and/or 5, the sheltering protective action will be communicated to the public as indicated in Section E. All emergency response agencies and individuals will be notified through the Sheriff's Office Central Communications or by key EOC staff.

When notified by EAS, the public will be advised to take individual protective actions such as going indoors and closing all doors and windows. Actions for the public to take are included in the Emergency Preparedness Information Brochure. Emergency workers inside the 10-Mile EPZ will be informed of the sheltering recommendation and will monitor radiation exposure levels through use of direct reading dosimeters. Emergency workers will shelter unless they are conducting an emergency response activity.

The EOC Law Enforcement Coordinator in coordination with local law enforcement agencies will activate Access Control Points based on which subareas are affected. The EOC Transportation Officer will provide barricades for those access control points. The EOC Law Enforcement Coordinator will coordinate access control point activation with the Law Enforcement Coordinator in Lake County and the Sheriff's Designate in Geauga County.

The EOC School Services Representative will notify the Geneva School District Superintendent of the sheltering recommendation, if they have not been relocated. The Geneva Superintendent will contact principals to relay the sheltering recommendation.

The Geneva State Park may close at Site Area Emergency. If sheltering or evacuation is recommended for park visitors before the park is closed, park rangers will warn visitors to leave the park and tune to local radio stations for emergency information. The Sheriff's Office will assist the Geneva State Park in traffic control and route alerting if requested.

## J.5 Evacuation

If the County Commissioners recommend evacuation to protect the public in the 10-Mile EPZ in Ashtabula County, the transient and resident population in the EPZ will be notified. Information will be provided in the manner described in Section E.

### J.5.1 Transportation

Most of the evacuating population will travel in their own vehicles, driving out of the EPZ using the evacuation routes shown in the Appendices.

The non-auto owning population will be instructed to go to pre-designated pick-up points referenced in the Appendices for transportation assistance. There are enough buses to transport the non-auto owning population, school children and mobility-impaired persons. Pick-up points and locations are indicated in the Emergency Preparedness Information Brochure.

Those who cannot walk to a pick-up point or those who need special transportation are instructed to call the Ashtabula County EMA for assistance. The phone number is listed in the Emergency Preparedness Information Brochure and will be released through the JIC.

General public turnout at pick-up points will be monitored by risk fire department personnel and reported to the Transportation Staging Area. Special transportation needs will be compiled by the County EOC and communicated to the Transportation Staging Area.

Allocation of buses for transporting school children has been prearranged. School districts inside the 10-Mile EPZ will use their entire bus fleet supplemented by enough buses from school districts and other transportation providers outside the EPZ to transport all school children to receiving schools.

Buses from school districts not supporting student evacuation will assemble at the Transportation Staging Area at Site Area Emergency or General Emergency as needs are identified by the EOC Transportation Officer. Buses supporting student relocation (Site Area Emergency) or evacuation (General Emergency) may be positioned at the risk school

district at Alert or Site Area Emergency.

Following the relocation or evacuation of school children, bus drivers will report to the Transportation Staging Area to assist other bus support districts in the evacuation of the general public. Upon completion of bus driver duties, bus drivers will report to an Emergency Worker Decontamination Station. Letters of Agreement from local school districts for school bus use are on file at the EOC. A letter from the Ohio Department of Education for school bus use for evacuation is also on file at the EOC.

Transportation resources for special needs residents will be directed from the Transportation Staging Area. A list of special needs agencies is kept in confidence at the EOC. Special needs residents/agencies have been identified in advance. Upon completion of transportation of special needs populations, drivers will be directed to an Emergency Worker Monitoring and Decontamination Station.

Health care facilities requiring evacuation transportation will contact the Ashtabula County EOC Health District representative to verify transportation needs. The EOC Fire/EMS Coordinator will contact risk fire departments to ensure that the Transportation Staging Area dispatches buses and/or ambulances to the appropriate health care facility.

The EOC Law Enforcement Coordinator would coordinate evacuation of jail inmates and others so confined.

#### J.5.2 Traffic and Access Control Points

As part of the response to the evacuation recommendation, the Law Enforcement Coordinator will activate traffic control points, in coordination with local law enforcement agencies. Officers will direct evacuees to evacuation routes and ensure traffic flows in a smooth, uninterrupted manner. Traffic control personnel are not sources for general public information. EAS, JIC news releases and Public Inquiry provide information to the public.

The Law Enforcement Coordinator will activate access control points, in coordination with local law enforcement agencies. Officers will ensure individuals do not enter evacuated or sheltered areas. The EOC Transportation Officer will provide barricades for access control points. Any resources needed to clear roads will be requested from and provided



by the EOC Transportation Officer. Assistance in clearing roadways can be obtained through the State of Ohio, ESF-1, Transportation, of which the primary agency is Ohio Department of Transportation (ODOT).

The Law Enforcement Coordinator will coordinate access control point activation with the Law Enforcement Coordinator in Lake County and Sheriff's Designate in Geauga County. Access control points and traffic control points are listed in the appendices.

In a Hostile Action Based incident the Incident Command may request Traffic and Access Control to be established to secure the crime scene or to keep public and media out of danger.

### J.5.3 Care Centers

Care centers will be available to receive, register, lodge and feed evacuees requiring these services. The care centers will be operated and managed by an American Red Cross (ARC) Shelter Manager who is responsible for all ARC care center operations.

Fire/EMS personnel will provide radiological monitoring and decontamination services at the Lakeside Reception Center. They will also implement emergency victim care, handling of contaminated/injured persons, and transportation attendant procedures.

The ARC Shelter Manager will coordinate the use of school facilities with school district personnel and the Ashtabula County Health Department who conducts hygiene and sanitary inspections upon request.

ARC will register all evacuees using their Care Center Registration Form. The registration form will be used for an evacuee location service. ARC will also provide nursing support; coordinate feeding supplies and services; coordinate social service with the Department of Job and Family Services Representative and ARC Representative in the EOC and call on the County Dog Warden for animal control.

Emergency medical support will be provided by the local fire departments. Amateur radio personnel, fire and/or police radios and school telephone will provide communications. Law Enforcement will provide care center security and conduct routine patrol of building grounds and facilities. The American Red Cross will provide additional logistical support for care

center operations.

NOTE: Only certified Service Animals are permitted at Reception and Care facilities.

#### J.5.4 Security Patrols

Security patrols of evacuated areas will be conducted by assigned police departments, Sheriff's Office and with assistance obtained through ESF-13, Law Enforcement, of which the primary agency is OSHP. The EOC Law Enforcement Coordinator will coordinate the assignment of security patrol personnel with the responsible EOC staff and the local police chiefs. The Law Enforcement Coordinator will ensure that security patrol personnel are advised of "contaminated areas" as advised by the County RO. Security patrols will ensure those persons in the evacuated areas have a Restricted Zone Pass and dosimetry.

#### J.5.5 Health Care Facilities

A matching host facility has been designated for each risk health care facility. These facilities were matched to ensure that skilled and non-skilled nursing patients would be sent to equal care facilities. A listing is found in the Appendices.

#### J.5.6 Receiving Schools

In the event schools relocate at Site Area Emergency, arrangements have been made for each school within the 10-Mile EPZ to relocate to a receiving school outside the 10-Mile EPZ, where students will await pickup by parents or guardians.

Parents are informed of their child's receiving school via an annual letter to parents from school officials, news releases from the JIC at the time of the emergency, by reference of Emergency Preparedness Information in the Emergency Public Information Brochure.

Public school superintendents in coordination with the EOC Transportation Officer and EOC School Services Representative are responsible for ensuring notification, transportation and relocation of private schools as well as public schools within their district. School districts outside the EPZ may alter class schedules at the Site Area Emergency classification to make school buildings and buses available for the evacuation effort.

#### J.5.7 Public Monitoring and Decontamination

Monitoring/decontamination at Lakeside Reception Center may be staffed at Site Area Emergency and activated at General Emergency. Team leaders will report staffing to the EOC Radiological Officer. When notified by the EOC that a "release is in progress", the team leader will activate the monitoring/decontamination station at the care center.

Upon arrival at the Lakeside Reception Center, the public will be monitored for contamination by local fire department personnel using radiological monitoring equipment. Any evacuees having contamination levels exceeding the limits will be decontaminated using the same method as specified in Section K of this document. After two attempts at decontamination, any individual with contamination meeting or exceeding the limits will be referred to the designated Lake County hospital or other designated medical facility for further evaluation.

After decontamination, evacuees will be directed to a care center operated by the ARC. Evacuees not requiring decontamination will be directed into a care center for registration. They are admitted only after showing a copy of the Personnel Monitoring Record that indicates they are not contaminated.

Vehicles, equipment, and service animals will also be monitored for contamination at Lakeside Reception Center. Monitors will pay close attention to grills, door handles, front bumpers, tires and other areas suspected of being contaminated. Air intake systems and air filters will not be monitored. Any vehicle area, equipment, or service animal found to be contaminated above the limits will be decontaminated to the extent possible.

Any individual surveyed whose initial reading meets or exceeds contamination levels referenced in the Appendices will be decontaminated then directed to a designated medical facility to be checked for internal contamination and to have a whole body count performed. Thyroid monitoring for the public is addressed at the medical facility during the whole body count. Medical facilities will be determined at the time of the emergency in coordination with state, federal, and utility authorities. The County RO and ODH will monitor the individual's condition.

Reports on the activities of monitoring/decontamination activities will be

made to the EOC Radiological Officer. This includes levels of contamination, exposure and requests for technical assistance. The EOC Radiological Officer will keep the EOC Executive Group updated on monitoring and decontamination activities.

The monitoring & decontamination facilities are staffed with the personnel and equipment capable of monitoring 20% of the EPZ population within about a 12-hour period.

#### J.5.8 Monitoring and Decontamination of School Children

In the event an evacuation protective action is recommended when school is in session, any student within the exposure pathway that may have or has actually been exposed to contamination will be promptly monitored and decontaminated, if necessary.

Should a release be imminent or in progress, the EOC will advise school transportation supervisors of this condition. School buses would be diverted to the Lakeside Reception Center where monitoring and decontamination provisions are available.

Should the buses be diverted from a designated receiving school to Lakeside Reception Center for monitoring, the students will be transported to a care center after monitoring. Parents or guardians will be notified of the care center at which their children will be located. This will be accomplished by Special Information Bulletins (SIBs), information at the Public Inquiry position in the EOC, and direct contact by school officials to parents.

#### J.5.9 Evacuation Time Estimates

The time estimate for evacuation, traffic capacity of evacuation routes and subarea population estimates is kept under separate cover on file at the EOC.

## J.6 Potassium Iodide Distribution

The Ohio Department of Health (ODH) may recommend the ingestion of Potassium Iodide (KI) at the General Emergency classification for those persons in subareas that are being evacuated or sheltered.

KI ingestion can be accomplished by the following methods:

- Those persons who obtained KI through the pre-emergency distribution will have it on hand and can ingest it during an evacuation or sheltering.
- Schools and large employers that have obtained KI during the pre-emergency distribution will administer KI according to their internal guidelines.
- KI will be available for distribution by local health districts at the care centers.
- Local Health Departments have Point of Distribution (POD) plans to be utilized for mutual aid, First responders or other specialized groups.

Emergency workers, institutionalized personnel and staff have been provided a predetermined amount according to agency numbers and should take KI only when recommended by the ODH and notified by the county Radiological Officer.

## **K. RADIOLOGICAL EXPOSURE CONTROL**

### **K.1 Purpose**

To describe the radiological monitoring and exposure control for emergency personnel, contamination monitoring and decontamination of personnel and equipment, radioactive monitoring control, and disposal of contaminated materials from monitoring/decontamination centers.

### **K.2 Dosimetry Equipment**

Dosimetry equipment for emergency workers to measure exposure to external ionizing radiation will be predistributed to each response agency with emergency responsibilities inside the 10-Mile Emergency Planning Zone (EPZ) and at monitoring/decontamination stations. Agency Dosimetry Coordinators are responsible for distribution of dosimetry packets to their personnel at the time of an emergency. Each emergency worker will be issued a dosimetry packet appropriate for their duties. Dosimetry can also be issued at the Reentry Verification and Orientation Center (REVOC) to persons who must enter the Restricted Zone. "Just-In-Time Training" will be provided when the dosimetry is issued.

Each EOC has a supply of additional Dosimetry packets to be utilized for mutual aid agencies, as replacements or to supplement equipment needs for any radiological incident upon request.

Additional dosimetry for emergency workers can also be obtained from supplies located at the other nuclear facilities located in Ohio and from the State of Ohio. The Executive Group would make requests for the additional dosimetry to the State of Ohio.

The emergency worker's dosimeters will be placed in an easily accessible upper torso position. The emergency worker will review the Dosimetry Report Form and Instructions on the reverse side, fill out the form, carry it while in possession of dosimetry and complete it at the end of their shift. Dosimetry equipment is to be worn at all times while performing duties inside the 10-Mile EPZ or where exposure is possible, such as decontamination duties.

### **K.3 Records**

Records of radiation exposure measured by direct-reading dosimeters and by

Permanent Record Dosimeters (PRDs) will be maintained by the issuing agency, the individual, the County EMA and the Ohio Department of Health (ODH). The issuing agency will maintain an "Emergency Worker Dosimetry Packet Issue and Exposure Log" which will record names of emergency workers, mission, location, time, initial readings, additional readings and mission total.

Upon termination of emergency duties, the emergency worker will retain a copy of the completed Dosimetry Report Form for their organization's personnel file. The Agency Dosimetry Coordinator will coordinate with the County RO to ensure all dosimetry packets are returned to the Ohio Emergency Management Agency (EMA) Resident Radiological Analyst (RRA). The equipment should be returned in the original box issued to the department. Emergency workers may be required to retain KI tablets if ODH recommends a continued administration. A NVLAP (National Voluntary Laboratory Accreditation Program) certified vendor will process the PRDs; the County RO will ensure processing results are distributed to the emergency worker and the emergency worker's organization.

#### K.4 Dosimetry Reading and Exposure Reporting

All emergency workers will have a Dosimetry Coordinator who is responsible for monitoring emergency worker exposure levels, updating emergency workers with changes in their Dosimeter Limit/Turn-back Value and taking the actions necessary to ensure emergency worker exposure is minimized. Emergency workers will report their dosimeter readings to the Dosimetry Coordinator at the designated intervals. Personnel who cannot read their dosimeters at the designated time due to their activity, such as driving a bus from a risk school to a receiving school, will read and report at the first available opportunity.

#### K.5 Exposure Control and Limits

Protective Action Guidelines (PAGs) for emergency workers are identified in Appendix 20. Emergency workers will report their dosimeter readings to the Dosimetry Coordinator at the designated intervals.

Persons less than 18 years of age, pregnant females and those allergic to iodine will not be assigned duties in a radiological emergency which involves potential radiation exposure.

Agency Dosimetry Coordinators will monitor personnel doses and ensure doses are kept as low as reasonably achievable by routing vehicles around radiologically contaminated areas where practical, minimizing time spent in a radiation area, and rotating personnel as often as possible.

If an emergency worker is involved in a lifesaving activity or protection of large populations and cannot be relieved, the agency's Dosimetry Coordinator will contact the EOC's Radiological Officer who will then contact ODH and request approval for the individual to receive exposure beyond the Dosimeter Limit / Turn-back Value. The emergency worker may continue only after being formally briefed by ODH and made fully aware of the risks of a radiation dose of that magnitude.

#### K.6 Monitoring for Radioactive Contamination

Emergency workers in Ashtabula County will be monitored for radioactive contamination upon completion of their mission.

Emergency worker monitoring/decontamination stations may be operational at Site Area Emergency, to monitor PNPP site personnel who are evacuated or at General Emergency when informed by the County RO. The County RO will provide technical guidance and will periodically contact monitoring/decontamination team leaders to obtain information on exposure levels and team activities.

Upon arrival at a monitoring/decontamination station, emergency workers will be directed to the appropriate monitoring locations by monitoring team members. Each individual will be monitored for external contamination using portal monitor equipment and survey meters.

If the portal monitor alarms, persons will be directed to the locker room for monitoring with a survey meter. Any individuals found with contamination levels of 300 cpm or more above background will be decontaminated.

Any emergency worker whose initial reading is 3000 cpm or greater on designated areas of the body will be decontaminated, then referred to a medical facility to be checked for internal contamination. Medical facilities will be determined at the time of the emergency in coordination with State, federal, and utility authorities.

Personal belongings, vehicles, and equipment will also be monitored. Any personal belongings with contamination levels of 300 cpm or more above background will be impounded and bagged for later decontamination. A member of the monitoring/decontamination team will provide to the emergency worker a receipt describing the contents and value of the item impounded.



## K.7 Decontamination

If the portal monitor alarms or monitoring for contamination reveals contamination levels greater than 300 cpm above background, emergency workers must be decontaminated. Contamination will be removed if easily removable. Emergency workers will remove clothing as necessary and wash or shower with soap and tepid water. Only those areas contaminated need to be washed. Cleaning and drying supplies will be available in the decontamination kit at the emergency worker decontamination stations.

A radiological monitor will re-survey areas after washings to check for contamination. After decontamination, emergency workers will be provided with temporary replacement clothing and allowed to return to their supervisor. After two attempts at decontamination, any individual with contamination levels 300 cpm or more above background will be referred to a medical facility for further evaluation.

Vehicles and equipment will also be decontaminated at emergency worker monitoring/decontamination stations. Monitors will pay close attention to grills, front bumpers, handles, tires and other areas suspected to be contaminated. Air intake systems and air filters will not be monitored. Any vehicle area or equipment with contamination levels of 300 cpm or more above background will be decontaminated.

Any vehicles or equipment not immediately necessary for public safety, which cannot be decontaminated below the limits will be impounded for further evaluation by OEMA. Those vehicles or equipment required back in service as soon as possible will be decontaminated to the extent possible. Contaminated areas of emergency vehicles that cannot be decontaminated will be covered and fixed contamination levels will be conspicuously posted inside the vehicle. The County RO will be informed of any contaminated vehicles returning to service.

The OEPA will determine a means for the disposal of waste generated by the offsite radioactive decontamination process in coordination with ODH and the utility. Water from the decontamination process may be directed to any existing drain system.

#### K.8 Contaminated/Injured Persons

In the event a contaminated/injured person requires medical treatment, emphasis will be placed upon stabilizing and transporting the victim to the designated facility by local fire department or private ambulance.

Attendants trained in the handling of contaminated/injured persons will take precautions to minimize the spread of contamination during treatment and transport of the victim. Attendants will wear gloves and personal dosimetry. A minimum number of personnel essential to the administering of first aid will be used and, in all cases first aid treatment takes priority over decontamination.

Arrangements have been made with Tri-Point and Lake West Hospitals (UH Lake Health) for the handling and treatment of contaminated/injured persons. Emergency Room personnel are trained to minimize the spread of contamination, monitor, decontaminate, and treat injured persons. Advanced treatment for contaminated/injured persons will be coordinated by the County RO and ODH, which maintains a listing of support hospitals capable of providing this service.

#### K.9 Use of Radioprotective Drugs

Potassium Iodide (KI) is an effective thyroidal blocking agent for reducing accumulation of radioiodine by the thyroid gland, which has entered the body through inhalation or ingestion. KI is supplied by the ODH to the Ohio EMA RRA for pre-distribution to emergency workers, staff at institutions and for the institutionalized. The Ohio EMA RRA places the KI in each dosimetry packet to allow emergency workers assigned duties inside the EPZ to begin use promptly and voluntarily upon recommendation from the ODH. KI will be replaced by the Ohio EMA RRA prior to its expiration. Each dosimetry packet includes a reference sheet concerning the hazards associated with the use of KI. Emergency workers who use dosimetry are also advised of the hazards of KI use in training courses.

ODH has also made KI available for pick-up by the general public. There is a supply of KI, which will be made available and distributed by the local health district/department at the care centers, if there is an evacuation. The process is described in Section J.

## **L. MEDICAL AND PUBLIC HEALTH SUPPORT**

### **L.1 Purpose**

To describe the arrangements made to provide medical services for treating contaminated/injured individuals and for evaluating radiation exposure and radioactive material uptakes.

### **L.2 Treating Contaminated/Injured Individuals**

Arrangements have been made with University Hospital's Lake Hospital System (TriPoint & West Medical Centers) to provide medical treatment for injured individuals who are contaminated by radioactive material. Hospital ER staff is trained and equipped to handle injured individuals who are contaminated. Special cases beyond the capability of UH Lake Hospital System will be transferred to other hospitals referenced in the State Plan, Hospital List.

The County RO will track all cases of injured/contaminated persons and coordinate with the Fire/EMS Coordinator the transfer to supporting hospitals.

UH Lake Hospital System's diagnostic evaluation services will provide an evaluation of radiation exposure and radioactive material uptake to individuals with an uptake, or suspected uptake of radioactive material.

Arrangements have been made with the UH Lake Hospital System to provide diagnostic evaluation services for individuals with an uptake of radioactive materials.

### **L.3 Transportation of Contaminated/Injured Individuals**

Injured persons who are suspected of being contaminated or are contaminated will be transported to the designated facility by fire/rescue ambulance. The EOC Fire/EMS Coordinator will coordinate which facility will receive the patient.

Ambulance crews have been trained and equipped to handle injured individuals who are contaminated. Upon completion of the transfer of injured individuals who are contaminated, ambulance crew personnel will report to an emergency worker monitoring/decontamination station where both they and the vehicle will be monitored and decontaminated, if necessary.

In the event local resources cannot adequately respond to medical transportation needs, assistance may be requested from the State. If requested, the State will provide ambulances to transport contaminated injured individuals to the appropriate medical facilities.

L.4 Letters of Agreement

The Letter of Agreement with UH Lake Hospital System is on file at the Lake County EOC and evidences the arrangements outlined in paragraph L.2.

## **M. RELOCATION, REENTRY, RETURN AND RECOVERY**

### **M.1 Purpose**

To describe a general plan of action for post accident operations which provide for a safe and orderly return to pre-emergency conditions.

### **M.2 Nuclear Incident Phases**

Early (Emergency) Phase - the period at the beginning of a nuclear incident when immediate decisions for effective use of protective actions are required and must therefore usually be based primarily on the status of the nuclear facility or other incident site and the prognosis for worsening conditions. When available, predictions of radiological conditions in the environment based on the condition of the source or actual environmental measurements may also be used. Protective actions based on the protective action guides (PAGs) may be preceded by precautionary actions during this period. This phase may last from hours to days.

Intermediate Phase - the period beginning after the source and releases have been brought under control and reliable environmental measurements are available for use as a basis for decisions on additional protective actions. It extends until these additional protective actions are terminated. This phase may overlap the early and late phase and may last from weeks to many months.

Late (Recovery) Phase - the period beginning when recovery action designed to reduce radiation levels in the environment to acceptable levels for unrestricted use are commenced, and ending when all recovery actions have been completed. This period may extend from months to years.

### **M.3 Definitions**

Protective Action Guides (PAG) - Projected ranges of radiation exposure levels that specify levels for initiating protective action recommendations such as relocation and limiting the use of contaminated food, water, and animal feed.

Recovery - The process of reducing radiation exposure rates and concentrations of radioactive material in the environment to acceptable levels for unconditional occupancy or use.

Reentry - Temporary entry into a restricted zone under controlled conditions.

Relocation - The removal or continued exclusion of people from contaminated areas to avoid chronic radiation exposure.

Return - Reoccupation of areas cleared for unrestricted residence and use.

Restricted Zone - An area with controlled access from which the population has been relocated. This area is established based upon a specified dose rate and calculated total effective dose determined by Federal and State guidance. The restricted zone will include the EPA Relocation PAG Zone from which the population has been relocated and a buffer zone surrounding the area to account for migration of deposited material.

FDA Food PAG Zone - An area established based upon a concentration of contamination in food present throughout a relevant period of time which, in the absence of intervention, may lead to radiation doses equal to Federal and State protective action guides for the ingestion pathway.

#### M.4 Protective Actions

##### M.4.1 Exposure Pathways

The principal pathways for exposure of the public occupying locations contaminated by deposited radioactivity are expected to be external exposure to gamma radiation from deposited radioactive materials, internal exposure from the inhalation of re-suspended materials, and from ingestion of contaminated food and water.

##### M.4.2 Protective Actions

The main protective actions for reducing exposure of the public to deposited radioactive materials are relocation, decontamination, time limits on exposure, control of the spread of surface contamination, and protection and control from ingestion of radioactive substances.

The county will rely primarily on the State's Ingestion Zone/Recovery Reentry Advisory Group (IZRRAG) for guidance and recommendations on which areas will be designated Restricted Zone(s) and FDA Food PAG Zones(s). Likewise, it will rely on the State's IZRRAG for a description of protective measures to be implemented in these zones.

#### M.4.3 Restricted Zone

If the radioactive contamination exceeds the level(s) specified by the IZRRAG for return of the population to their residences, a Restricted Zone will be identified by the State. The county, in coordination with other affected counties, will assist the State in establishing access control around the Restricted Zone until such time as the restriction is lifted. A buffer zone shall be established around the Restricted Zone at easily identifiable locations, such as intersections. Persons who live in the Restricted Zone and were not previously evacuated will be notified by telephonic communications, public announcements and house-to-house notifications.

Only authorized persons will be allowed to enter a Restricted Zone. "State of Ohio Restricted Zone Passes" will be utilized by local access control personnel. If necessary, a Reentry Verification and Orientation Center(s) (REVOC) will be established by the affected counties for coordination of reentry into restricted zones. The REVOC will serve as a verification and information center for personnel requiring reentry. All persons allowed entry will be issued dosimetry and be briefed on its use. In coordination with the State and other involved counties, the EMA Director will ensure that access to the Restricted Zone is managed through a designated access control point and that all other access control points do not allow entry or exit. Also, the EMA Director will ensure that a monitoring/decontamination station for personnel and equipment is established close to the designated access control point through which entry/exit is controlled. The State or the Department of Energy will approve any environmental samples being removed from the Restricted Zone for laboratory analysis.

Initially, entry into the Restricted Zone will be for monitoring and sampling. Later, authorized persons will need to reenter for a variety of reasons, such as: retrieval of property, security patrol, operation of vital services, and care and feeding of farm and other animals. It may be possible to quickly decontaminate access to vital institutions and special facilities so that they can be occupied by adults for employment or other reasons. People who live inside a Restricted Zone may have to be relocated temporarily or on a long-term basis.

#### M.4.4 Ingestion Control Measures

The county will assist the State with ingestion control activities to implement IZRRAG recommendations for control of food and water. The county will relay all such ingestion control recommendations to personnel who are performing tasks for the County EMA. Also, the county will assist the State with dissemination of information for the public about ingestion control measures and other protective actions.

#### M.5 Shift From Emergency Phase to Intermediate Phase

Activities conducted during the Emergency Phase and in the Intermediate Phase are not exclusive of one another. Some Intermediate activities may begin prior to the end of the Emergency Phase. However, at some point an official notice of a shift from the Emergency Phase to the Intermediate Phase should be made to inform the entire emergency response organization and the public of the County's operational status.

The incident response effort will shift from the Emergency Phase to the Intermediate Phase upon the decision of the Ashtabula County Executive Group. Prior to such a decision the Executive Group shall have received:

- 1) Notice from the Perry Nuclear Power Plant (PNPP) that:
  - the plant is in safe shutdown,
  - release of radioactive material from the Plant has stopped or is within acceptable limits,
  - additional uncontrolled or potentially harmful releases are unlikely;
- 2) Notice from the State that:
  - the State Dose Assessment Group or State/ Federal Government field monitoring teams have verified that releases have stopped,
  - The State IZRRAG has environmental measurements and can recommend areas for:
    - (a) unconditional return of the population,
    - (b) return of the population with some temporary protective measures recommended,
    - (c) Restricted Zone(s);
- 3) Indication from the County EOC Staff that Intermediate Phase Operations could commence.



Decisions to relax protective action measures initiated during the Emergency Phase will be predicated upon information and advice from the State and from the County EOC staff. Advice from PNPP and appropriate elements of the Federal Government may also be solicited. The final decision to relax protective actions will be made by the Ashtabula County Executive Group who will confer with the Executive Groups of other affected counties and the State's IZRRAG.

#### M.6 County Operations in the Intermediate Phase

In general, once the Emergency Phase protective actions are relaxed the County's emergency response organization will continue to perform the same or similar functions that originally put the response into effect. The number of personnel needed for most activities will be less than the Emergency Phase, so supervisors of field agencies may release emergency responders as appropriate and with the concurrence of their primary EOC contact person. Among the functions that remain active but are not necessarily staffed to the same level as during the Emergency Phase are the following:

- Agency Notification - (See Part E of this Plan) The EOC will continue appropriate notifications to all response agencies.
- Public Notification - (See Part E of this Plan) The public will be informed of key developments and of return procedures and protective actions for the Intermediate Phase via news releases.
- EOC Operation - (See Part H of this Plan) The EOC will continue to operate with suitable personnel to meet the needs throughout the Intermediate Phase. The EOC Executive Group will retain the authority to change any existing Protective Action Decisions (PADs) and to implement any new protective actions. The EOC Staff will continue coordinating field operations. As circumstances permit, the EMA Director may release some EOC staff and consolidate staff positions. Likewise, field agencies may be asked to reduce numbers of emergency workers on duty, assume new roles, or be released from duty. For longer-term operations the Executive Group may elect to delegate some protective action decision authority to the EMA, the Health District, or others.

- Accident Assessment - (See Part I of this Plan) The County Executive Group will continue to coordinate with the State and with the Federal Radiological Monitoring and Assessment Center (FRMAC) on field measurement activities. In particular, the Executive Group will forward to the State any special requests for monitoring/assessment needs that may be otherwise unknown to the State.
- Security Control - (See Part J of this Plan) Security services for the area(s) evacuated will be maintained until normal emergency services are restored.
- Access Control - (See Part J of this Plan) Access control will be maintained for each area under Protective Action Decisions until such decisions are ended or until other arrangements are accomplished. New access control points may have to be established to facilitate return of the population to areas evacuated or for Restricted Zones.
- Traffic Control - (See Part J of this Plan) Traffic Control will be resumed at appropriate points as return to the evacuated area(s) is accomplished.
- Transportation - (See Part J of this Plan) Those evacuees in care centers or other locations in the County who need transportation will be returned to their residences or other quarters.
- Operation of Care Centers - (See Part J of this Plan) Operation of care centers will be phased out as evacuees return to their residences or are relocated to other quarters.
- Reentry Verification and Orientation Center (REVOC) – Will be established for coordination of reentry into Restricted Zones, as necessary. The REVOC will serve as a verification and information center for personnel requiring reentry. This includes activities such as security, sampling, restoration of vital utilities, milking, watering, feeding, and general care of livestock and poultry until circumstances no longer require it. The location and agency(ies) that operates both the REVOC and the nearby monitoring/decontamination station is decided at the time of the emergency, based on the restricted area.
- Radiological Exposure Control - (See Part K of this Plan) This function will continue for the public and for conducting operations until such time as all areas are returned to pre-emergency conditions. The County EOC Staff will inform workers of Protective Action Guides (PAGs) recommended by the State.

- Medical and Public Health Support - (See Part L of this Plan) Appropriate medical and public health services will extend through the Intermediate Phase. Such services could include psychological counseling or other necessary services.

#### M.7 Other Intermediate Phase Operations

Intermediate Phase plans are general by design since effects of radiological events can vary widely and appropriate operations are determined by the circumstances in each case. During the Intermediate Phase there is time to plan and coordinate operations. The following actions may be appropriate for the County to conduct:

- Continue monitoring and decontamination services for people and their property;
- Provide monitoring/decontamination services near the designated access point for a restricted zone;
- Provide assistance with collection of radioactive waste for disposal;
- Provide transportation services to individuals;
- Provide security services for any special operation where advisable;
- Assistance with medical follow-up for residents and emergency workers exposed to radiation;
- Provide services in support of any relocation activity;
- Provide information to local governments and residents about cost estimation and possibilities for financial reimbursements;
- Coordinate with the State Government, Federal Government, colleges and universities and other entities on establishment of a long term monitoring program(s).

## **N. EXERCISES AND DRILLS**

### **N.1 Purpose**

To describe the exercises and drills conducted to evaluate emergency response capabilities in Ashtabula County and to develop and maintain key skills. To establish the process for improving response plans and capabilities based on observations during the exercises and drills.

### **N.2 Exercises**

Exercises are realistic, planned simulations of accidents designed and conducted to simulate emergency conditions that require offsite response to radiological releases. Exercises shall be conducted as set forth in NRC and FEMA regulations.

An exercise that simulates a major emergency at PNPP and requires Ashtabula County participation will be conducted biennially. The exercise will include the mobilization of State and county personnel and equipment resources to the degree required to verify response capabilities.

The biennial exercise scenario will be varied from exercise to exercise to ensure that all major elements of the Radiological Emergency Response Plan are tested at least once every eight years to include at least one HAB scenario and one non-release scenario.

### **N.3 Drills**

Drills are preplanned simulations in which the participants are "walked" or "talked" through one or more procedures or aspects of the Plan. The primary purpose of a drill is to train individuals in a controlled situation. A drill is supervised and evaluated by a qualified person and provides for onthespot correction of inappropriate performance and a demonstration of proper performance by the evaluator. A drill may also be a component of an exercise.

- a. Communication drills will be conducted to ensure that participants understand the types of messages that will be transmitted and how they should respond to these messages.

A communication test of the 5Way Dedicated Telephone Line connecting Geauga, Lake and Ashtabula counties, PNPP and OEMA will be conducted at least monthly. The communication tests will be initiated by PNPP personnel to verify the reception quality and acknowledgment of the ringdown capabilities of the system. The landline phone with conferencing capability at the Backup EOC is tested semi-annually.

A communication test of the Executive Discussion Line (EDL) connecting Geauga, Lake and Ashtabula counties, and the State will be conducted quarterly. The communication test will serve to verify the reception quality and acknowledgment of the system.

A communication test of the JIC telephones will be conducted semi-annually. The test will be initiated to verify the reception quality and acknowledgement of the ring down capabilities of the system.

Communications between Ashtabula County and response agencies take place on a daily basis. Communication between the Ashtabula County EOC and State EOC is tested weekly.

The EAS Sage Encoder is tested weekly.

#### N.4 Exercise/Drill Scenarios

Scenarios for exercises and drills will be developed to simulate actual emergency conditions as closely as possible, and to allow free play for decisionmaking. Scenarios for exercises and drills that involve PNPP will be developed for Ashtabula County by PNPP. Each scenario for an exercise or drill will contain as a minimum the following information:

- The basic objective(s) and appropriate evaluation criteria.
- The simulated event(s), which will be of sufficient magnitude as to require offsite response.
- A time schedule of real and simulated initiating events.

- A narrative summary which describes the conduct of the drill or exercise including such things as: simulated casualties, offsite fire department assistance, rescue of personnel, use of protective clothing, deployment of monitoring teams, and public information activities.
- Arrangements for evaluators/observers.
- A description of the advance material to be provided to evaluators/observers and the arrangements for distribution of the materials.

The Ashtabula County EMA Director will make preparations for drills that do not involve PNPP.

#### N.5 Exercise/Drill Controllers and Observers

##### a. Exercises

PNPP may send observers to Ashtabula County during exercises. Additionally, individuals from regulatory agencies and local, State, or Federal agencies may observe and comment on the exercise. The EMA Director will ensure the number of observers does not impede the functioning of their operations.

##### b. Drills

PNPP or the Ashtabula County EMA Director will provide qualified drill controllers and observers to supervise and evaluate drill participants.

#### N.6 Exercise/Drill Critiques

Critiques will be held as soon as is practical following the conclusion of an exercise or drill. FEMA is responsible for conducting a critique within 48 hours after each exercise. In addition, the Ashtabula County EMA Director will conduct a critique immediately after conclusion of an exercise. The agency that conducts each drill will be responsible for conducting the critique of that drill.

The critique participants will evaluate performance and ability of individuals, organizations, and equipment to respond as required.

A written summary of the exercise will be prepared by FEMA evaluators with a copy provided to the Ashtabula County EMA Director. Problems identified by Federal agencies will be addressed to the Executive Director of OEMA through FEMA, Region V, Radiological Assistance Committee Chairman. It is the responsibility of the Executive Director of OEMA to ensure a timely response to each correspondence.

Review and implementation of any necessary improvements and/or corrections to the Ashtabula County Emergency Preparedness Program will be made by the EMA Director or under his direction. The County Commissioners will have the final responsibility for ensuring that improvements and/or corrections are completed in a timely manner.

## **O. RADIOLOGICAL EMERGENCY RESPONSE TRAINING**

### **O.1 Purpose**

To describe the training given to individuals in the agencies and organizations in Ashtabula County who may be requested to respond and provide assistance as the result of an emergency at PNPP.

### **O.2 Overview of the County's Training Program**

The Ashtabula County Emergency Management Agency (EMA) has developed a joint training program with the Lake County Emergency Management Agency and Geauga County Department of Emergency Services (DES). This training program is fully described under a separate cover and is officially entitled "Comprehensive Training Program for the Radiological Emergency Response Plans of Ashtabula, Geauga, and Lake Counties". It is commonly referred to as "CTP" and this short title is used here. The official CTP document prescribes training for each agency designated in the counties' Plans. The CTP document is kept on file in the counties' EMA/DES offices, along with the associated lesson plans.

The CTP is designed to assure that each responding agency receives appropriate initial training and is offered annual refresher training for the particular responsibilities assigned to the agency.

The CTP training program is organized into separate subject areas or "modules" of training. Each module has an accompanying lesson plan. The prescribed training for an agency is identified by the training module(s) that contains the subject matter pertinent to that group.

Each emergency worker must take "Basic Emergency Planning Concepts and SOG" (module 1). This module contains material common to all responders such as subareas, other agencies' responsibilities, and material pertinent to the worker's emergency response duties.

Training classes and attendance are tracked by computer, which facilitates easy attendance taking and record keeping by the instructors. These records allow for periodic analysis of the annual training objectives in terms of the prescribed training designated for agencies.



### O.3 Purpose of the Training Program

Specifically, the purpose of the training program is to:

- Establish an effective and efficient training program for emergency response agencies and individual workers who will respond to emergencies that may occur at the Perry Nuclear Power Plant.
- Ensure that appropriate training is delivered to emergency response agencies that will respond to emergencies at the Perry Nuclear Power Plant.
- Specify the training requirements by subject area (module of training) for each radiological emergency response agency and for each emergency operations center (EOC) position.
- Specify the desired number of trained persons per each response agency and for each EOC position.
- Provide a means for record keeping.
- Provide a method of measuring program attainment.
- Integrate the State and Federal Government's training programs into the County's program.
- Set qualifications for instructors.
- Coordinate the training programs of Ashtabula, Geauga, and Lake counties' EMA/DES agencies.

### O.4 Training Modules and Lesson Plans

The training program consists of separate training modules or subjects, each of which can be presented independently or in conjunction with others. Each module has an accompanying lesson plan. Each lesson plan has a clearly worded terminal objective and a series of enabling objectives.

Each module can be presented as initial training or as a refresher course. Generally, the refresher training is delivered in about ¼ of the time of the initial training. The training modules are:

<u>Module #</u>	<u>Module Title</u>
1.	Emergency Planning Concepts and SOG
2.	PIO
3.	Radiation, Health Effects, Dosimetry, and KI for Emergency Workers
4.	Radiological Survey Instruments
5.	Ambulance Crew Handling of Contaminated Injured Victims
6.	Access Control Point Procedures
7.	School District Administration Emergency Practices
8.	School District Transportation Practices
9.	Hospital Emergency Department Procedures
10.	Public Inquiry
11.	PNPP Design and Operation
12.	Training for Executive Groups
13.	Siren Activation SOP and EAS SOP
14.	Radiological Monitoring and Decontamination Procedures
15.	Fire Department Interface with PNPP
16.	Portable Monitor Operations Manual
17.	Professional Planning Series
18.	Evaluated Exercise/Drill Performance

Complete descriptions of the modules are contained in the CTP document that is on file at the counties' EMA/DES offices.

#### O.5 Who Is Trained To What

Each response agency that has a SOG receives training or familiarization of their responsibilities. CTP lists by training module number the training goal for each agency that is assigned emergency response duties and identifies:

- each agency with emergency response responsibility;
- the number of persons by agency that should be trained in order for the agency to function properly;
- the precise training by subject matter for each agency.

#### O.6 Training Data

Training data is maintained in an Excel spreadsheet for easy reference.

#### O.7 Just-In-Time Training

There may be emergency workers responding to an incident that are not trained under the CTP. These emergency workers must receive appropriate radiological training prior to performing their duties. This training is provided as “Just-In-Time” training.

Just-In-Time training may utilize informational brochures, videos, and computerized training to provide basic initial radiological training. Specific job tasks will normally be performed under the direction of a CTP trained individual.

## **P. RESPONSIBILITY FOR THE PLANNING EFFORT**

### **P.1 Purpose**

To describe the process for Plan and SOG review and update.

### **P.2 Planning Responsibility**

The Emergency Management Agency (EMA) Director has the overall authority and responsibility for radiological emergency response planning in Ashtabula County. The EMA Director is also responsible for developing, reviewing, and updating the Plan and SOGs and for coordinating them with the plans of other response groups. Coordination of the Ashtabula County Plan will be made specifically with the Ohio Plan for Response to Radiation Emergencies at Licensed Nuclear Facilities, Federal plans, local plans of Geauga and Lake counties and the PNPP Emergency Plan.

The EMA Director and staff will attend emergency planning seminars and workshops conducted by FEMA, OEMA, and PNPP periodically. This will ensure that they maintain current levels of training in planning techniques and procedures and in new laws and regulations pertaining to radiological emergency response plans.

### **P.3 Review and Updates**

The EMA Director will, with assistance from PNPP, review this Plan and its SOGs, Letters of Agreement, maps and other supporting documents at least annually and update as needed.

Any changes dictated by exercise or drill critiques or by revised regulatory requirements or other identified changes are tracked by the EMA for incorporation into the plan. Plan changes will be reviewed at an annual meeting with Lake and Geauga counties to maintain consistency across the three county plans.

Updates will be incorporated into the Plan and SOGs. Revised documents will be forwarded to all holders of the Plan or affected SOG(s) and incorporated by the Ashtabula County EMA. Plan holders who received updates electronically will verify that they received the documents via read receipt or email. Appendix 4 lists the agencies supporting the plan.

If there are no changes to the current RERP, the County Commissioners and the DES Director may issue a letter indicating such to FEMA.

At least once each year, usually following the annual review and update, the County Commissioners and the EMA Director will certify the Plan current. The certification will be recorded on the Certification form or a letter to FEMA and inserted into the Plan.

The contact information contained in the Notification SOG will be reviewed and updated to be correct on a quarterly basis.

#### P.4 Supporting Plans

The following is a listing of emergency plans, which support this Plan:

- State of Ohio Plan for Response to Radiation Emergencies at Licensed Nuclear Facilities;
- Perry Nuclear Power Plant Emergency Plan;
- Lake County Radiological Emergency Response Plan;
- Geauga County Radiological Emergency Response Plan;
- Evacuation Time Estimates for Areas Near the Perry Nuclear Power Plant Plume Exposure Pathway Emergency Planning Zone.
- National Response Framework

#### P.5 Supporting Documents

- EPA-400-R-92-001, "Manual of Protective Actions Guides and Protective Actions for Nuclear Incidents";
- NUREG 0654/FEMA-REP 1, Revision 2, "Criteria for Preparation and Evaluation of Radiological Emergency Response Plans and Preparedness in Support of Nuclear Power Plants."
- FEMA P-1028, Program Manual, Radiological Emergency Preparedness.

## **APPENDIX 1**

### **Definitions and Acronyms**

Access Control Points - Points established at roads leading into an evacuated or sheltered area for the purpose of controlling access into an area. Points operated by state and local law enforcement or the Ohio National Guard.

ALERT - Events are in progress or have occurred which involve an actual or potential substantial degradation of the level of safety of the plant or a security event that involves possible life-threatening risk to site personnel or equipment because of hostile action. Any radioactive releases occurring are expected to be well below the U.S. Environmental Protection Agency (EPA) Protective Action Guideline (PAG) exposure limits.

Alternate Care Center – Care centers that are staffed and activated when the primary care center reaches 75% of capacity.

Decontamination - Any process such as washing with soap and water, which removes radioactive contamination from a surface.

Dedicated Telephone System - A telephone system which is not available for general use and which may be used only between certain pre-designated locations, thus assuring availability for vital communications.

Direct-Reading Dosimeter - An electrostatic device on which radiation exposure can be read.

Drill - A supervised instruction period intended to test, develop, and maintain skills in a particular emergency operation.

Emergency Action Level (EAL) - pre-determined, site-specific, observable triggers for placing the plant in a classification such as an Unusual Event, Alert, Site-Area Emergency, or General Emergency

Emergency Operations Center – A building located in Jefferson, Ohio from which an Ashtabula County emergency response is controlled and coordinated.

Emergency Planning Zones - Areas around PNPP for which plans are made to assure that prompt and effective actions can be taken to protect the public in the event of an emergency situation at PNPP.

Executive Group - The Ashtabula County Commissioners, Sheriff and the EMA Director.

Executive Discussion Line - A telephone conferencing system, which links together the Lake County EOC, the Geauga County EOC, and the Ashtabula County EOC and the State of Ohio. The Perry Nuclear Power Plant may be added if desired.

Exercise - An event that tests the integrated capability and a major portion of the basic elements within emergency organizations.

5-Way Dedicated Telephone System - A 5-way, dedicated telephone system which links together PNPP (EOF, TSC, Control Room), the State of Ohio EOC, the Lake County EOC, the Geauga County EOC, and the Ashtabula County EOC.

GENERAL EMERGENCY - Events are in progress or have occurred which involve actual or imminent substantial fuel core degradation or melting with a potential for loss of containment integrity or security events that result in an actual loss of physical control of the facility. Releases may exceed U.S. EPA Protective Action Guideline exposure limits offsite.

HAB – (Hostile Action Based) is an act toward a nuclear power plant or its personnel that includes the use of violent force to destroy equipment, take hostages, and/or intimidate the licensee to achieve an end

Ingestion Exposure EPZ - The area around PNPP out to a radius of about 50 miles for which the primary pathway for radiation doses is expected to result from the ingestion of food and water contaminated with radioactive material.

Joint Information Center (JIC) - The location from which news media representatives will obtain briefings and news source materials. The utility is responsible for establishing and operating the JIC at the Auburn Career Center in Concord, Ohio.

Letter of Agreement - A document executed with and which assures support by private agencies and organizations and schools in Ashtabula County, which have been requested to provide support.

NUREG0654/FEMA-REP 1, Revision 2 - The federal emergency planning document which establishes the planning criteria upon which the Plan was formulated.

Plume Exposure EPZ - The area around PNPP out to a radius of about 10 miles for which the primary pathway for radiation doses is expected to result from external exposure to, or the inhalation of, the radioactive material in the air. Also called the 10Mile EPZ.

Primary Care Center – A facility outside the 10-mile EPZ at which evacuees are provided food and temporary lodging. The term “Care Center” in this plan is synonymous with the Red Cross term “Mass Care Center”.

Protective Actions - Actions such as sheltering or evacuation taken to prevent or minimize exposure to radioactive materials

Radioactive Contamination - Radioactive material in an undesirable location.

Receiving School - Predetermined schools outside the plume exposure EPZ to which risk school students are relocated and remain under risk school officials' supervision until they are picked up by their parents or legal guardians.

Reception Center - A facility where monitoring, decontamination, and registration of evacuees are conducted

Recovery - Any actions necessary to return Ashtabula County to its preemergency condition.

Reentry - Temporary reentry into the restricted zone under controlled conditions.

Relocation - The removal or continued exclusion of people from contaminated areas to avoid chronic radiation exposure until the levels of radiation drop to an acceptable level.

Resettlement - The permanent removal and exclusion of people from contaminated areas to avoid chronic radiation exposure that exceeds federal guidance on lifetime limits.

Return - The reoccupation of areas previously restricted, may be conditional occupancy.

Risk Facility - An agency, organization or facility located inside the 10-mile EPZ.

Risk School District - A school district located partially or wholly within the plume exposure EPZ. This includes all Public and Private Schools but not day care centers.



SITE AREA EMERGENCY - Events are in progress or have occurred which involve actual or likely major failures of plant functions needed for protection of the public or security events that result in intentional damage or malicious acts toward site personnel or equipment needed for the protection of the public. Any releases are not expected to exceed U.S. EPA Protective Action Guideline exposure limits offsite.

Suggested Operating Guidelines (SOG) - Documents with specific actions for each agency and organization in Ashtabula County, which may be requested to provide support.

Standby Status - Term used to describe a state of readiness. SOGs have been reviewed; material, communications and required supplies are available and adequate for initial operations. Sufficient personnel are on hand to commence operations. Personnel necessary for sustained operations are alerted and ready to report for duty when called.

Traffic Control Points - Points established at critical road intersections for the purpose of controlling the direction and flow of traffic.

Transportation Staging Area (TSA) A predesignated site through which transportation resources are routed to preassigned or current locations to pick up evacuees and transport them to the assigned destination. TSA's are operated by fire department personnel.

Turn Back Value An exposure limit at which an Emergency Worker should leave the area without further consultation or direction unless performing lifesaving actions or protecting large populations.

UNUSUAL EVENT - Events out of the ordinary are in progress or have occurred which indicate a potential degradation of the level of safety in the plant or a potential security event. No releases of radioactive material requiring offsite response or monitoring are expected unless further degradation of safety systems occurs.

Virtual Operations Support Team (VOST) – A team of trusted agents that use new communication technologies and social media tools to lend internet monitoring and trending support to affected organizations during emergencies.

## ACRONYMS

- ACP – Access Control Point
- CEDE – Committed Effective Dose Equivalent
- cpm Counts Per Minute
- DHHS Department of Health and Human Services
- EAL – Emergency Action Level
- EAS Emergency Alert System
- EMA Emergency Management Agency
- EOC Emergency Operations Center
- EOF Emergency Operations Facility
- EPZ Emergency Planning Zone
- ESF – Emergency Support Function
- FDA Food and Drug Administration
- FEMA Federal Emergency Management Agency
- FRMAC – Federal Radiological Monitoring and Assessment Center
- HAB – Hostile Action Based incident
- IZRRAG – Ingestion Zone/Recovery and Reentry Advisory Group
- JIC Joint Information Center
- KI – Potassium Iodide
- NOAA National Oceanic and Atmospheric Administration
- NRF – National Response Framework
- ODA Ohio Department of Agriculture
- ODH Ohio Department of Health
- OEMA Ohio Emergency Management Agency
- OEPA Ohio Environmental Protection Agency
- ONG Ohio National Guard
- OSHP Ohio State Highway Patrol
- OSLD – Optically Stimulated Luminescent Dosimeter
- PAD – Protective Action Decision
- PAG – Protective Action Guideline
- PAR – Protective Action Recommendation
- PIO Public Information Officer
- PNPP Perry Nuclear Power Plant
- PRD – Permanent Record Dosimeter
- RERP Radiological Emergency Response Plan
- REVOC – Reentry Verification and Orientation Center
- SOG Suggested Operating Guidelines
- TEDE – Total Effective Dose Equivalent
- TSA – Transportation Staging Area
- VOST – Virtual Operations Support Team



Table 7-1. Time to Clear the Indicated Area of 90 Percent of the Affected Population

	Summer		Summer		Summer	Winter			Winter			Winter	Summer	Summer
	Midweek		Weekend		Midweek Weekend	Midweek			Weekend			Midweek Weekend	Weekend	Midweek
Scenario:	(1)	(2)	(3)	(4)	(5)	(6)	(7)	(8)	(9)	(10)	(11)	(12)	(13)	(14)
Region	Midday		Midday		Evening	Midday			Midday			Evening	Evening	Midday
	Good Weather	Rain	Good Weather	Rain	Good Weather	Good Weather	Rain/Light Snow	Heavy Snow	Good Weather	Rain/Light Snow	Heavy Snow	Good Weather	Special Event	Roadway Impact
Entire 2-Mile Region, 5-Mile Region, and EPZ														
R01	2:15	2:15	2:10	2:15	2:15	2:15	2:15	2:30	2:10	2:15	2:25	2:15	2:15	2:15
R02	2:35	2:40	2:25	2:30	2:20	2:35	2:40	3:25	2:25	2:25	3:10	2:20	2:20	2:40
R03	3:20	3:35	3:25	3:35	3:05	3:15	3:30	4:05	3:10	3:25	4:05	3:05	3:20	3:30
2-Mile Ring and Keyhole to 5 Miles														
R04	2:35	2:40	2:20	2:25	2:20	2:30	2:35	3:15	2:20	2:25	3:05	2:20	2:20	2:35
R05	2:30	2:30	2:15	2:20	2:20	2:30	2:30	3:15	2:15	2:20	3:00	2:20	2:20	2:30
2-Mile Ring and Keyhole to EPZ Boundary														
R06	3:20	3:25	3:15	3:30	3:05	3:20	3:25	4:10	3:00	3:20	4:05	3:10	3:05	3:20
R07	3:10	3:15	3:00	3:20	2:50	3:05	3:15	4:00	2:45	3:10	3:50	3:00	2:50	3:10
R08	3:00	3:15	2:55	3:25	2:55	3:05	3:20	3:55	2:50	3:10	3:50	3:00	2:55	3:10
R09	3:05	3:10	2:55	3:10	2:50	3:00	3:10	3:55	2:50	3:10	3:45	2:50	2:50	3:10
R10	2:40	2:40	2:20	2:25	2:20	2:30	2:35	3:15	2:20	2:25	3:00	2:20	2:20	2:45
R11	3:10	3:20	3:05	3:15	3:00	3:05	3:15	3:55	3:00	3:10	3:45	3:05	3:15	3:20
R12	3:15	3:20	3:10	3:20	3:05	3:05	3:20	4:00	3:00	3:15	3:45	3:00	3:20	3:25
R13	3:10	3:25	3:15	3:25	3:10	3:15	3:30	4:05	3:10	3:20	4:00	3:05	3:30	3:15
Staged Evacuation - 2-Mile Region Evacuates, then Evacuate Downwind to 5 Miles														
R14	2:55	3:05	2:50	2:55	2:55	2:55	3:00	3:40	2:50	3:00	3:35	2:55	2:55	2:55
R15	3:05	3:10	3:00	3:00	3:00	3:05	3:10	3:50	3:00	3:00	3:40	3:00	3:00	3:05
R16	2:55	3:00	2:50	2:55	2:55	2:55	3:00	3:35	2:55	2:55	3:35	2:55	2:55	2:55

Table 5. EPZ Population

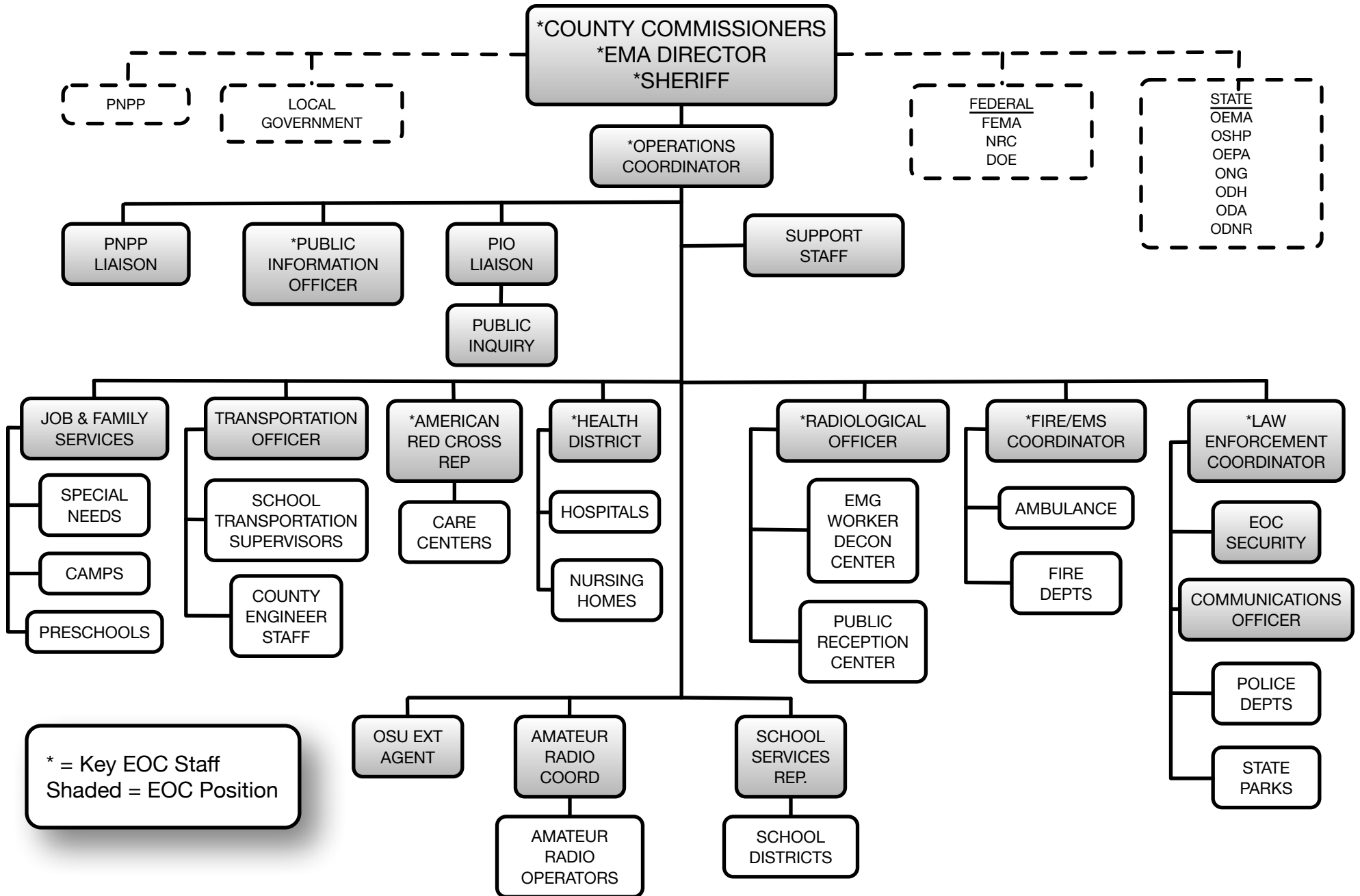
Subarea	2020 Population	2023 Extrapolated Population
1	2,585	2,572
<b>2-Mile Region Total:</b>	<b>2,585</b>	<b>2,572</b>
2	10,633	10,576
3	12,911	12,828
<b>5-Mile Region Total:</b>	<b>26,129</b>	<b>25,976</b>
4	17,269	17,204
5	3,511	3,514
6	10,425	10,366
7	51,331	51,679
<b>EPZ Total:</b>	<b>108,665</b>	<b>108,739</b>

Table 6. Shadow Population by Sector

Sector	2020 Population	2023 Extrapolated Population
N	0	0
NNE	0	0
NE	0	0
ENE	916	914
E	2,241	2,235
ESE	1,729	1,728
SE	1,185	1,185
SSE	1,852	1,854
S	4,105	4,131
SSW	2,893	2,907
SW	27,016	26,726
WSW	19,116	18,951
W	0	0
WNW	0	0
NW	0	0
NNW	0	0
<b>Total</b>	<b>61,053</b>	<b>60,631</b>

# APPENDIX 3 ASHTABULA COUNTY EMERGENCY RESPONSE ORGANIZATION

Revision 26  
January 2024



## APPENDIX 4

### AGENCIES AND ORGANIZATIONS PARTICIPATING IN AN ASHTABULA COUNTY RESPONSE

<u>Agency/Organization</u>	<u>Response Function</u>
<b>ASHTABULA COUNTY COMMISSIONERS</b>	Exercise control over the entire county response effort; decide on major responses to be implemented; provide public information; provide personnel to staff various positions in the EOC.
<b>EMERGENCY MANAGEMENT AGENCY</b>	Plan for emergency response; ensure resources for response; coordinate activities of other agencies and organizations; advise other agencies and organizations; ensure continuous manning of 24-hour communications system; ensure response agencies and organizations in the County are notified of an emergency; provide County Radiological Officer.
<b>SHERIFF'S OFFICE</b>	Receive notification from PNPP of an emergency; provide EOC security; provide Law Enforcement Coordinator, Communications Officer, and various staff positions for the EOC; staff traffic and access control locations; patrol evacuated areas; provide traffic control and security at care centers and receiving schools; assist in traffic control and route alerting at Geneva State Park, as requested.
<b>HEALTH DEPARTMENT</b>	Assure sanitation at care centers; contact point in EOC for nursing homes, Geneva Medical Center, Conneaut Medical Center, and Ashtabula County Medical Center; report on transportation needs of risk health care facilities to Transportation Officer and Fire/EMS Coordinator; provides an individual to fill the EOC Health District position; ensures distribution of Potassium Iodide (KI) to the institutionalized and the general public at care centers

<u>Agency/Organization</u>	<u>Response Function</u>
<b>ENGINEER</b>	Provide traffic and access control devices for control locations; keep evacuation routes passable and repaired; provide Transportation Officer for EOC.
<b>OHIO STATE COOPERATIVE EXTENSION SERVICE</b>	Coordinates the implementation of protective actions recommended by OEMA, ODH and ODA for livestock, food crops and milk supply. Assists with farmer reentry into evacuated areas and in implementing health advisories, if requested.
<b>DEPARTMENT OF JOB AND FAMILY SERVICES</b>	Provide social services at care centers. Notifies individuals on Special Needs List, state licensed preschools, and camps.
<b>EMA VOLUNTEERS</b>	Staff various positions in the EOC such as PIO, Public Inquiry.
<b>SUPERINTENDENT OF COUNTY SCHOOLS</b>	Coordinate school operations; provide notification to schools after arrival in EOC.
<b>AMATEUR RADIO CLUB</b>	Provide Amateur Radio Coordinator in EOC; provide radio operators at care centers and Red Cross Chapter House; coordinate Amateur Radio operations in Ashtabula County.
<b>ASHTABULA COUNTY DOG WARDEN</b>	Coordinate animal care.



Agency/Organization

Response Function

Schools Inside 10-Mile EPZ:

<b>GENEVA SCHOOL DISTRICT</b>	Evacuate school population to the Jefferson School District schools; provide bus transportation for Geneva School District students.
-------------------------------	--

State-Licensed Preschools Inside 10-Mile EPZ:

<b>ASHTABULA COUNTY HEAD START-GENEVA CENTER</b>	Release children to parents or evacuate to Edgewood Senior High School.
--	---

<b>FIRST UNITED METHODIST DAY CARE &amp; PRESCHOOL</b>	Release children to parents or evacuate to Edgewood Senior High School.
--	---

<b>CAROL'S CORNER CHILD CARE</b>	Release children to parents or evacuate to Edgewood Senior High School.
----------------------------------	---

<b>A KIDS ONLY LEARNING CENTER III</b>	Release children to parents or evacuate to Edgewood Senior High School.
--	---

<b>ST. JOHN'S LUTHERAN PRESCHOOL</b>	Release children to parents or evacuate to Edgewood Senior High School.
--------------------------------------	---

Agency/Organization

Response Function

Camps Inside 10-Mile EPZ:

**CAMP KOINONIA**

Release campers to parents or evacuate to Edgewood Senior High School.

Schools Outside 10-Mile EPZ:

**ASHTABULA CITY**

Provide receiving school support for students from Madison School District; provide buses and drivers for evacuation; Lakeside High/Junior High School serves as a Monitoring/Decontamination Center for Emergency Workers and a Reception Center for the General Public. It is staffed by Saybrook, Ashtabula Twp, Ashtabula City and Conneaut Fire Departments.

**BUCKEYE LOCAL DISTRICT**

Provide a primary care center location; provide buses and drivers for evacuation.

**CONNEAUT AREA SCHOOLS**

Provide a primary care center location.

**JEFFERSON DISTRICT**

Provide receiving school support for students from Geneva School District; provide buses and drivers for evacuation.

**A-TECH**

Provide backup receiving school support for students in the event a receiving school is unavailable.

Agency/Organization

Response Function

Fire Departments Inside 10-Mile EPZ:

**GENEVA F.D.**

Provide alert/warning for special groups; activate and coordinate the bus and ambulance transportation system at Colonial Plaza in Geneva; provide usual mutual aid.

**GENEVA-ON-THE-LAKE F.D.**

Provide alert/warning for special groups; activate and coordinate the bus and ambulance transportation system at Indian Creek Resort in Geneva-on-the-Lake; provide usual mutual aid.

**HARPERSFIELD F.D.**

Provide alert/warning for special groups; activate and coordinate the bus and ambulance transportation system at Sonny Lanes in Geneva; provide usual mutual aid.

Fire Departments Outside 10-Mile EPZ:

**ASHTABULA CITY F.D**

Provide monitoring and decontamination support at Lakeside School campus; provide usual mutual aid; provide ambulances for transport of mobility impaired and transport for contaminated/injured persons in Ashtabula County; provide other support as requested by EOC.

**ASHTABULA TOWNSHIP F.D**

Provide monitoring and decontamination support at Lakeside School campus; provide usual mutual aid; provide ambulances for transport of mobility impaired and transport for contaminated/injured persons in Ashtabula County; provide other support as requested by EOC.

Agency/Organization

Response Function

**CONNEAUT F.D.**

Provide monitoring and decontamination support at Lakeside School campus; provide usual mutual aid; provide ambulances for transport of mobility impaired and contaminated/injured persons; provide other support as requested by EOC.

**SAYBROOK F.D.**

Provide monitoring and decontamination support at Lakeside School campus; provide usual mutual aid; provide ambulances for transport of mobility impaired; provide other support as requested by EOC.

Police Departments Inside the  
10-Mile EPZ:

**GENEVA P.D.**

Man traffic control locations; man access control points, as available; patrol evacuated areas; maintain law and order.

**GENEVA-ON-THE-LAKE P.D.**

Man traffic control locations; man access control points, as available; patrol evacuated areas; maintain law and order.

Police Departments Outside the  
10-Mile EPZ:

**CONNEAUT CITY P.D.**

Provide care center support; man traffic control locations.

Agency/Organization

Response Function

Nursing Homes Inside 10-Mile EPZ:

**MANOR HOME** Evacuate to Ashtabula County Nursing Home.

**RAE ANN ENTERPRISES** Evacuate to Saybrook Landing Health and Rehabilitation.

**RICHWOOD RESIDENTIAL** Evacuate to Ashtabula County Nursing Home.

**WALDEN RESIDENTIAL CENTER** Evacuate to Ashtabula County Nursing Home.

**PINE GROVE** Evacuate to Saybrook Landing Health and Rehabilitation.

**GENEVA CENTER FOR REHABILITATION & NURSING** Evacuate to Andover Village Nursing Home

**SANCTUARY OF GENEVA** Evacuate to Andover Village Nursing Home

Hospitals Inside 10-Mile EPZ:

**GENEVA MEDICAL CENTER** Evacuate hospital population to Conneaut Medical Center; provide usual medical services until evacuation.

**GENERATIONS BEHAVIORAL HEALTH** Evacuate facility population to Ashtabula County Medical Center; provide usual medical services until evacuation.

Hospitals Outside 10-Mile EPZ:

**ASHTABULA COUNTY  
MEDICAL CENTER**

Provide facilities for individuals evacuated from Generations Behavioral Health; provide usual medical services.

**CONNEAUT MEDICAL  
CENTER**

Provide facilities for individuals evacuated from Geneva Medical Center; provide usual medical services.

Ambulance Services Inside 10-Mile EPZ:

**NORTHWEST AMBULANCE  
DISTRICT**

Provide medical services; provide ambulances for transportation of mobility impaired; provide ambulances for transportation of patients, including contaminated/injured persons.

Ambulance Services Outside 10-Mile EPZ:

**SOUTH CENTRAL  
AMBULANCE DISTRICT**

Provide medical services; provide ambulances for transportation of mobility impaired; provide ambulances for transportation of patients, including contaminated/injured persons.

**JEFFERSON RESCUE**

Provide medical services; provide ambulances for transportation of mobility impaired; provide ambulances for transportation of patients, including contaminated/injured persons.

Agency/Organization

Response Function

State of Ohio:

(For a complete listing of State agencies see the State Plan, Section II-A)

**OHIO EMERGENCY  
MANAGEMENT AGENCY**

Primary responsibility for field radiological measurements (gamma radiation and air sampling); assist in the development and provision of accident assessment information, recommendation of protective actions, and recovery and re-entry actions; serve as the general coordinating point for Federal, State and local governments.

**OHIO DEPARTMENT OF  
HEALTH**

Primary responsibility for direction and control of accident assessment activities, recovery and re-entry actions, and determination of protective actions for the public.

**OHIO ENVIRONMENTAL  
PROTECTION AGENCY**

Primary responsibility for field radiological sampling (water, vegetation, and soil); assist in the determination of protective actions for the public and recovery and re-entry actions; pick up and dispose of contaminated materials collected by Ashtabula County Emergency workers.

**OHIO STATE HIGHWAY  
PATROL**

Staff traffic and access control locations as pre-assigned or requested by ACSD; provide law enforcement support.

Agency/Organization

Response Function

**OHIO NATIONAL GUARD**

Provide logistical support; assist with area security patrol and traffic and access control activities; provide medical support at care centers and special care facilities.

**OHIO DEPARTMENT OF  
NATURAL RESOURCES  
(GENEVA STATE PARK)**

Supplement alert/warning in the park; evacuate the park; provide traffic control; close and patrol the evacuated park.

Federal:

**FEDERAL EMERGENCY  
MANAGEMENT AGENCY  
(FEMA)**

(For a complete listing of Federal agencies, see the State Plan) Coordinate overall off-site Federal responses; respond to requests from County and State for support; ensure Federal support for recovery operations.

**FEDERAL BUREAU OF  
INVESTIGATION (FBI)**

Would be lead investigation agency for HAB, Terrorist or threat based incident.

**UNITED STATES COAST  
GUARD**

Would be lead law enforcement for water-based incidents. Requested through the State EOC

Other:

**AMERICAN RED CROSS**

Manage care center activities; provide medical services at care centers; provide ARC Representative at the Ashtabula County EOC.

**PERRY NUCLEAR POWER  
PLANT**

Provide notification and follow-up information; provide accident assessment information; provide PNPP Liaison to the Ashtabula County EOC.



**APPENDIX 5**  
**Agency Responsibility Matrix**

Revision 26  
January 2024

NF581	Direction & Control	Notifi- cation	Communi- cations	Pubic Alerting	Public Infor- mation	Emer- gency Facilities	Accident Assess- ment	Public Health	Message Control	Public Inquiry	Rad. Exp. Control	Protective Response	Monito- ring / Decon.	Recovery Reentry	Trans- portation	Care Centers	Law Enforce- ment / Security	Traffic Control /Access Control	Train- ing	Exer- cise /Drills	Plan Maint- enance	Social Services	Fire / Rescue	Medical Services	Environ. Rad. Monitor	Animal Care
<b>COUNTY / EOC STAFF</b>																										
Commissioners	P			S	S						S	P		P							P					
EMA Director	P	P	P	P	S	P	S		S		P	S		S					P	P	P					
Sheriff's Office	P	P	P	S					S			S		S		S	P	P								
OSU (Ohio State Univ) Extension							S		S	S						S	P	P								S
Dept. of Job and Family Services		P							S													P				
Engineer (Transportation Officer)		P							S						P			S								
EOC Support Staff		P	S						S																	
Fire/EMS Coordinator		P							S						S								P			
Health Department		P						P	S							S										
Public Information Officer/Liaison					P				S	P																
Radiological Officer									S		P		P	S						P	P				S	
Public Inquiry					S				S	P																
School Services Officer		P							S							S										
Red Cross								S	S							P										S
Amateur Radio Clubs			S						S							S										
PNPP Liaison									S										S	S	S					
Dog Warden																S										P
Schools inside 10-Mile EPZ															P											
Schools Outside 10-Mile EPZ															P	P										
Fire Depts. Inside 10-Mile EPZ				S											S								P	S		
Fire Depts. Outside 10-Mile EPZ													P		S								P	S		
Police Depts. Inside 10-Mile EPZ																	P	P								
Police Depts. Outside 10-Mile EPZ																S	P	P								
Geneva State Park				S													S	S								
NAD/SCAD/Jeff Rescue															S								P	P		
Hospital Inside 10-Mile EPZ																								S		
Hospital Outside 10-Mile EPZ																								P		
<b>STATE</b>																										
Ohio EMA							S					S		S					S	S					P	
Ohio State Highway Patrol																	P	P								
Ohio National Guard															S		S	S						S		
Ohio EPA												S		S											P	
Ohio Department of Health							P				P	P		P												
<b>FEDERAL</b>																										
FEMA							S													S						
NRC							P																			
DOE							S																			
<b>UTILITY</b>																										
PNPP		P					P												S	S	S				S	

**LEGEND:** P - Primary Responsibility S - Support Responsibility

## **APPENDIX 6 LETTERS OF AGREEMENT**

### Title/Agency

Perry Nuclear Power Plant (Energy Harbor)

Northwest Ambulance District

Ashtabula County South Central Ambulance District

Ashtabula County Medical Center

Conneaut Medical Center

UH Lake Health Systems

Ashtabula Area City Schools

Ashtabula County Joint Vocational School District (now A-Tech)

Buckeye Local Schools

Conneaut Area City Schools

Geneva Area City Schools

Jefferson Area Local School District

American Red Cross

Letters of Agreement are on file in the Emergency Management Agency office and are reviewed annually and updated as needed.

## APPENDIX 7

### EMERGENCY ACTION LEVEL SCHEME

#### NOTES

1. The order in which actions are listed is not necessarily the sequence in which they would occur.
2. Discretionary actions will be determined by the County Commissioners. The Commissioners will make their decisions in consultation with other members of the EOC Executive Group, based on recommendations made by PNPP, the OEMA, and the Lake County EOC Operations Group.

#### Emergency Classification

#### Initial Actions

#### **UNUSUAL EVENT**

- o Notify key response personnel
- o Prepare news release

#### **ALERT**

- o Notify key response personnel
- o Partially activate EOC
- o Establish EOC security
- o Notify agencies and organization inside the 10-Mile EPZ including school districts, fire and police departments, Geneva State Park, GMC and nursing homes
- o Notify schools outside the 10-Mile EPZ
- o Establish EOC message control
- o Prepare news releases
- o Radiological Officer assumes responsibility for operation of the 5-Way Dedicated Telephone Line

Emergency Classification

Initial Actions

**ALERT** continued

- o Establish communications with Geauga and Lake counties and maintain a continuous link
- o Continually update status boards
- o If the JIC is activated, the PIO reports to the JIC

**SITE AREA EMERGENCY**

- o Notify all EOC Staff
- o Activate and staff EOC
- o Establish EOC security
- o Consideration given to declaring a "State of Emergency" in Ashtabula County
- o Notify all agencies and organizations such as fire and police departments, schools, ambulances, health care facilities, county offices
- o Notify sight/mobility impaired, hearing impaired, large employers and camping/recreation areas inside the 10-Mile EPZ
- o Establish EOC message control
- o Radiological officer assumes responsibility for operation of the 5-Way Dedicated Telephone
- o Communications established with Geauga and Lake counties and maintain a continuous link

Emergency Classification

Initial Actions

**SITE AREA EMERGENCY** continued

- o Staff primary care centers
- o Activate Transportation Staging Area; buses arrive at staging area
- o When the JIC is activated, PIO proceeds to the JIC
- o Risk (EPZ) schools relocate, if schools' officials deem it prudent.
- o Receiving schools prepare to receive students from risk schools
- o Establish Public Inquiry
- o Close Geneva State Park
- o Activate traffic control points, if local conditions warrant
- o Determine bus and ambulance needs
- o Remove impediments from evacuation routes
- o Ensure emergency workers are issued dosimetry packets
- o Continually update status boards
- o During HAB incidents, Law Enforcement will provide credential verifications.

Emergency Classification

**GENERAL EMERGENCY**

Initial Actions

- o Complete actions under **SITE AREA EMERGENCY**
- o Ambulances arrive at Transportation Staging Area
- o Alert and warn public via siren activation and EAS announcements and conduct route alerting, if necessary
- o Activate monitoring/decontamination teams and centers for emergency workers and at primary care centers
- o Recommend placing lactating livestock and poultry within 10-Miles of PNPP on stored feed and assess need to extend distance
- o Activate traffic control points
- o Activate access control points, if necessary
- o Implement recommended Protective Actions
- o Monitor emergency worker exposures
- o During HAB incidents, Law Enforcement will provide credential verifications.

Protective Action

Initial Actions

**SHELTERING**

- o Complete actions under **GENERAL EMERGENCY**
- o Shelter risk school students and public in affected areas, if not previously relocated
- o Notify agencies and organizations of radioactive release(s)
- o Establish access control points for areas being sheltered

**EVACUATION**

- o Complete actions under **GENERAL EMERGENCY**
- o Evacuate risk school students if not previously relocated, and the general public
- o Notify agencies and organizations of radioactive release(s)
- o Establish access control points for areas being evacuated
- o Activate primary care centers
- o Provide non-auto owning population transportation out of EPZ
- o Provide public with monitoring/decontamination and care at care centers
- o Provide emergency workers with monitoring/decontamination at emergency worker monitoring/decontamination stations
- o Provide security for evacuated areas
- o Begin the Intermediate Phase, to address Re-entry, Recovery and Relocation

## **APPENDIX 8**

### **NOTIFICATION FORMS**

Initial Notification Form  
Follow-Up Notification Form  
State of Ohio Protective Action Recommendations  
County Protective Action Decision  
State Supplemental Action Forms

Current copies of all notification forms are on file at the  
Ashtabula County Emergency Management Agency.

Since these forms tend to change on a recurring basis,  
they are not included in this document.



## **APPENDIX 9**

### **SIREN LOCATIONS**

The siren locations map is on file at the  
Ashtabula County Emergency Management Agency.

## Appendix 10

### Communications Links

#### COMMUNICATIONS LINK BETWEEN ASHTABULA COUNTY EOC AND:

	PRIMARY	ALTERNATE
Emergency Operations Facility (EOF)	5-Way Dedicated Phone	EDL Telephone MARCS Radio Fax
EAS – Radio/TV Stations	EAS Sage Encoder	Fax Telephone
State of Ohio EOC	5-Way Dedicated Phone	Telephone MARCS Radio Fax
Geauga and Lake Co. EOCs	EDL Phone Line	Telephone MARCS Radio Fax Cell phone
Joint Information Center (JIC)	JIC Dedicated Phone	Telephone Fax
Local Response Agencies	Sheriff Dispatch (VHF and MARCS radio)	Telephone Fax Cell phone
Medical Support Facilities	VHF Radio	MARCS Radio Telephone Amateur Radio
Schools	Telephone	Amateur Radio
Nursing Homes	Telephone	Amateur Radio
Day Cares	Telephone	Amateur Radio
Geneva State Park	Telephone	State of Ohio
Ohio State Highway Patrol	Telephone	MARCS State of Ohio Fax
Federal Response Agencies	Telephone	State of Ohio
State Communications Van	MARCS	State of Ohio
Incident Command post	Telephone	MARCS

Note: A communications link between the EOC and any local organization can be established with Ashtabula County Amateur Radio Club (ACARC).

**APPENDIX 11**

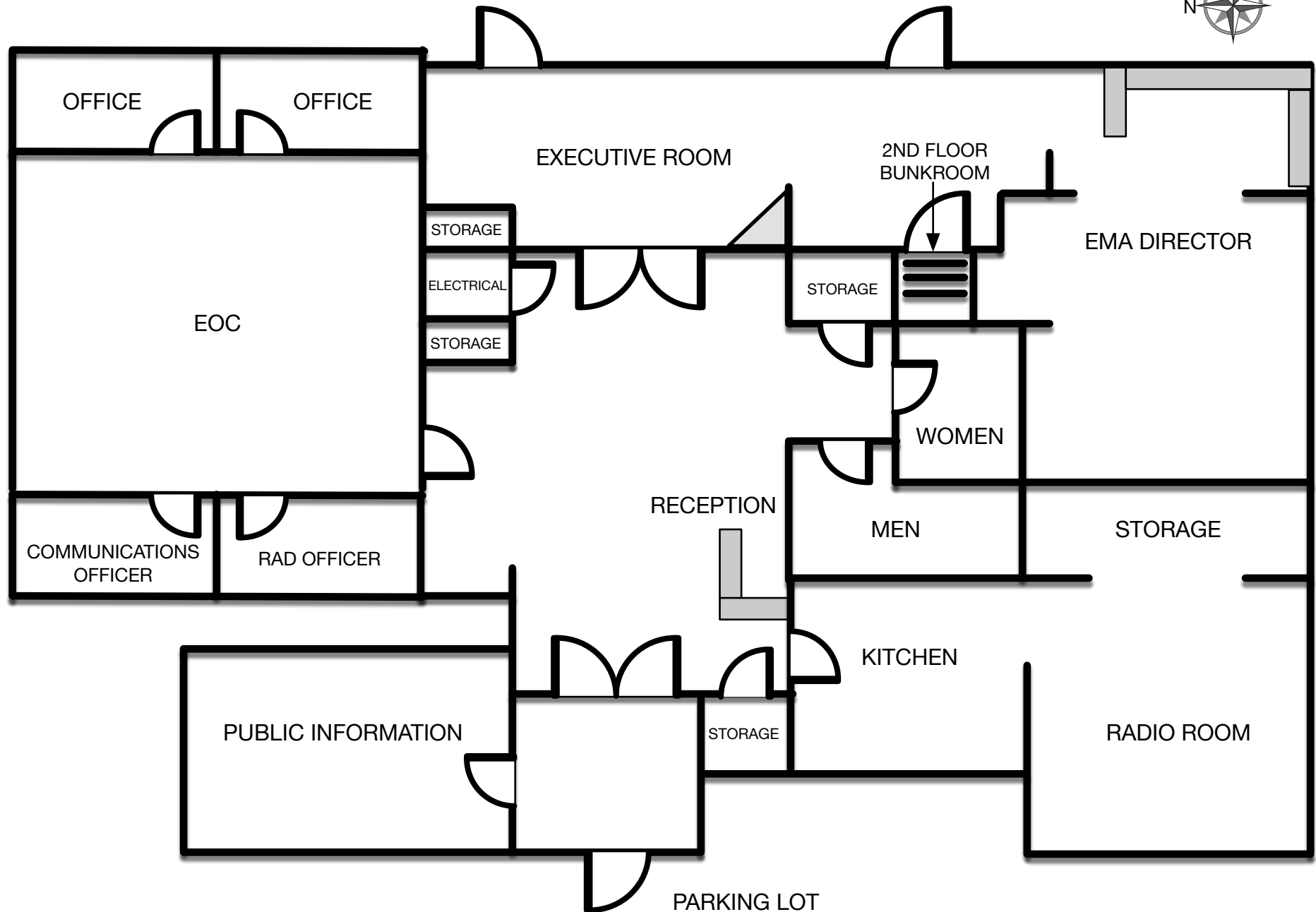
**EMERGENCY PREPAREDNESS INFORMATION (EPI) BROCHURE**

Copies of the EPI Brochure are available at the  
Ashtabula County Emergency Management Agency

## **APPENDIX 12 EAS Messages**

**The EAS procedure is on file at the  
Ashtabula County Emergency Management Agency**

## Ashtabula Emergency Operations Center



## **APPENDIX 14 EMERGENCY KITS**

General contents of emergency kits are shown below. The exact inventories and types of equipment vary with each response organization. For example, one fire department might have 20 dosimeters whereas another might have 34; also, one fire department might have protective clothing, whereas another may not.

### Personnel Decontamination Kit

- Personnel decontamination supplies
- Protective clothing
- Radiological monitoring equipment
- Respiratory protective equipment (SCBAs provided by fire department, as needed)
- Record forms

### Red Cross Mass Care Kit

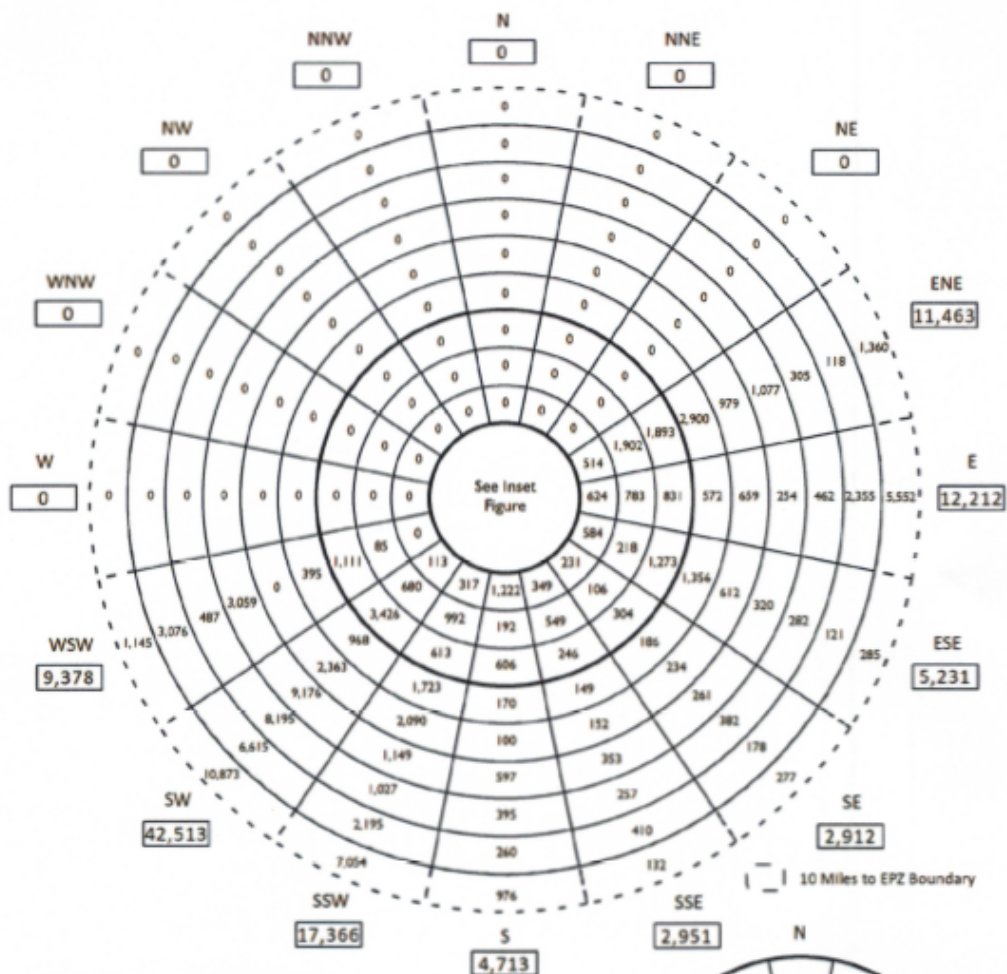
- Registration forms
- (Other items to be added by Red Cross)

### Personnel Radiological Protection Kit (dosimetry packs)

- Dosimetry equipment
- Permanent Record Dosimeter
- Self Reading pocket Dosimeters
  - 0-20 R
  - 0-200 R
- Record forms
- Potassium Iodide (KI)

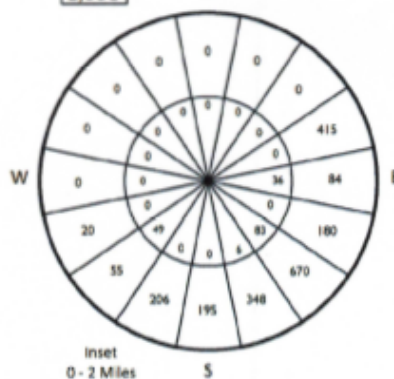
## Appendix 15

### Perry Nuclear Power Plant Sector and Zone Designators



2023 Extrapolated Resident Population

Miles	Subtotal by Ring	Cumulative Total
0 - 1	174	174
1 - 2	2,173	2,347
2 - 3	3,954	6,301
3 - 4	5,507	11,808
4 - 5	10,303	22,111
5 - 6	8,419	30,530
6 - 7	7,189	37,719
7 - 8	16,246	53,965
8 - 9	11,792	65,757
9 - 10	15,328	81,085
10 - EPZ	27,654	108,739
Total:		108,739



**APPENDIX 16**  
**TRAFFIC CONTROL POINTS**  
**&**  
**ACCESS CONTROL POINTS**

The Ashtabula County Traffic Control Point and Access Control Point list is located in  
SOG Attachment 47



## **APPENDIX 17**

### **CARE CENTERS AND RECEPTION CENTER IN ASHTABULA COUNTY**

#### **\* Primary Care Centers**

Edgewood Sr. High, 2428 Blake Rd, Ashtabula

Conneaut Middle School, 230 Gateway Ave, Conneaut

#### **Alternate Care Center for housing only**

Braden Jr. High, 3436 Edgewood Dr, Ashtabula

Gateway Elementary, 229 Gateway Ave, Conneaut

#### **Public Reception Center & Emergency Worker Monitoring/Decontamination Center**

Lakeside High School Campus, 6600 Sanborn Rd, Ashtabula

\* The term "primary" indicates a care center that will staff and activate first. Alternate care centers will be staffed by the Red Cross and activated when the primary care center reaches 75% capacity. Evacuees who need housing will be bused to Braden Jr. High or walk across the parking lot to Conneaut Elementary.

Additional school facilities are available for care center services and could be activated when the alternate care center is at 75% capacity.

Monitoring/Decontamination Teams at the Lakeside Reception Center are comprised of the following members:

1. Team Leader
2. Dosimetry Coordinator
3. Personnel Portal Monitor Operator
4. Personnel Recorder
5. Locker Room Monitor (2 – Male & Female)
6. Locker Room Recorder (2 – Male & Female)
7. Locker Room Attendant (2 – Male & Female)
8. Transportation Attendant
9. Vehicle/Equipment Monitor
10. Vehicle/Equipment Recorder
11. Vehicle/Equipment Attendant
12. Vehicle Movement Attendant

In order for the emergency worker facility to be declared “operational”, at least 11 persons must be onsite to fill positions 1 – 8.

The primary care center facilities are declared “operational” when the ARC Shelter Team (# of personnel based on ARC requirements) is present.

## APPENDIX 18

### TRANSPORTATION PICK-UP POINTS AND STAGING AREAS

#### PICK-UP POINTS

<u>Number</u>	<u>Location</u>
40	Trailer Park at U.S. 20 & Myers Rd.
41	Austin Mobile Homes, Austin Road
42	Route 534 & Maple Avenue
43	County Line Road & Lake Road
44	County Line Road & U.S. 20 West
45	Geneva-on-the-Lake Golf Course Parking Lot
46	Sun Retreats Geneva on the Lake Parking Lot
47	Geneva Township Park

A map with Pick-Up Point number and location is located at the Ashtabula County EOC.

#### TRANSPORTATION STAGING AREAS

<u>Staging Area</u>	<u>Responsible Fire Department</u>
Sonny Lanes Route 534 Geneva, Ohio	Harpersfield Fire Department
Plaza located at East Main and Austin East Main Street Geneva, Ohio	Geneva Fire Department
Sun Retreats Geneva on the Lake 4710 Lake Road East Geneva, Ohio	Geneva-on-the-Lake Fire Department

## APPENDIX 19

### RISK/RECEIVING SCHOOLS

<b><u>EPZ Subarea</u></b>	<b><u>From (Risk School)</u></b>	<b><u>To (Receiving School)</u></b>
2	Madison High (L)	Lakeside High (A)
2	Madison Pre-K (L)	Ontario Primary (A)
2	Madison Middle (L)	Lakeside Junior High (A)
2	North Elementary (L)	Superior Intermediate (A)
4	South Elementary (L)	Erie Intermediate (A)
4	Geneva Middle School (A)	Jefferson High School (A)
4	Geneva High School (A)	Jefferson High School (A)
4	Geneva Platt R. Spencer Elementary (A)	Jefferson Elementary School (A)
5	Cork Elementary (A)	Jefferson Elementary School (A)

Facility located in (A) Ashtabula County; (G) Geauga County; (L) Lake County.

## APPENDIX 19

### RISK/HOST HEALTH CARE FACILITIES

#### **Risk Facility**

Cardinal Woods (L)

Generations Behavioral (A)

UH Geneva Medical Center (A)

Geneva Center for Rehabilitation (A)

Madison Health Care (L)

Manor Home (A)

Pine Grove Nursing (A)

Rae Ann Enterprises (A)

Richwood Residential (A)

Sanctuary of Geneva (A)

Walden Residential Center (A)

#### **Host Facility**

Lake Point Rehabilitation (A)

Jefferson Health Care (A)

Ashtabula County Medical Center (A)

UH Conneaut Medical Center (A)

Andover Village Skilled Nursing and  
Rehabilitation (A)

Country Club Center III (A)

Ashtabula County Nursing Home (A)

Saybrook Landing Health and Rehabilitation  
(A)

Saybrook Landing Health and Rehabilitation  
(A)

Ashtabula County Nursing Home (A)

Andover Village Skilled Nursing and  
Rehabilitation (A)

Ashtabula County Nursing Home (A)

Facility located in (A) Ashtabula County; (G) Geauga County; (L) Lake County.

<b><u>APPENDIX 20</u></b>		
<b><u>EMERGENCY WORKER PROTECTIVE ACTION GUIDES</u></b>		
<b>Early-Phase Dose and Dosimeter Limits</b>		
<b>Activity</b>	<b>TEDE Dose Limit</b>	<b>Dosimeter Limit / Turn- back Value</b>
<b>Inside Emergency Planning Zone:</b>		
Standard Response Functions	5 rem	1 R
Protecting valuable property	10 rem	2 R
Lifesaving or protection of large populations	25 rem	5 R
<b>Outside Emergency Planning Zone:</b>		
All	5 rem	5 R
<b>Intermediate-Phase Dose and Dosimeter Limits</b>		
<b>Inside Restricted Zone:</b>		
All	5 rem	5 R
<b>Outside Restricted Zone:</b>		
All	5 rem	5 R

Emergency Workers are limited to non-pregnant adults performing emergency services.

## **CONTAMINATION ACTION LEVELS**

(Personnel, Clothing, Belongings)

**IF** portal monitor **DOES NOT** alarm:

**THEN** individual exits paper and proceeds to Recorder

**IF** portal monitor **ALARMS**:

**THEN** individual remains on paper and proceeds to locker room

- ☐ Individual is monitored with a survey instrument
- ☐ Probe is held 1-3 inches above surface
- ☐ Probe is moved less than 6 inches per second

**IF** greater than 300 cpm above background is found;

**THEN** decontaminate

**IF** greater than 300 cpm above background remains after 1<sup>st</sup> decontamination;

**THEN** decontaminate a 2<sup>nd</sup> time

**IF** still greater than 300 cpm above background;

**THEN** refer to hospital

**IF** initial reading on face or chest is greater than 3000 cpm above background;

**THEN** refer to hospital (even if less than 300 cpm after 2 attempts)

Note: Maximum background for contamination monitoring is 300 cpm.

## **CONTAMINATION ACTION LEVELS**

(Personal and Emergency Vehicles)

*If the occupants of a public vehicle are monitored and found to be “not contaminated”, their vehicle does not require monitoring.*

Monitor the following areas of vehicles:

- grills
- front bumpers
- wheel wells
- tires
- handles
- passenger compartments
- (do not monitor air intake systems and air filters)

**IF** greater than 300 cpm above background is found ON ANY VEHICLE;

**THEN** mark vehicle and move to impound area for decontamination when convenient.

**IF** greater than 300 cpm above background remains ON A PUBLIC VEHICLE after decontamination attempts:

**THEN** impound vehicle, tag it and maintain an inventory list of the contaminated vehicles.

**IF** greater than 300 cpm but less than 30,000 cpm above background remains ON AN EMERGENCY VEHICLE THAT IS NEEDED FOR SERVICE after decontamination attempts:

**THEN** cover contaminated area with plastic, mark it and release for service.

**IF** greater than 30,000 cpm above background remains ON AN EMERGENCY VEHICLE THAT IS NEEDED FOR SERVICE after decontamination attempts:

**THEN** impound vehicle, tag it and maintain an inventory list of the contaminated vehicles.



## APPENDIX 21

### ASHTABULA COUNTY DOCUMENTS CROSS-REFERENCED TO AREAS OF THE PLAN SUPPORTED BY THE DOCUMENTS

<b><u>SOG</u></b>	<b><u>Section of Plan Supported</u></b>
Amateur Radio Club	A.3.2, B.2, B.3, E.3, F.2, H.2.2, J.5.3
Ambulance Providers	A.3.4, A.3.5, B.2, B.3, E.3, J5.1, K, L.4
American Red Cross	A.3.4, B.2, B.3, E.3, F.2.3, J.5.3, J.5.4, M.4
Ashtabula EMA	A.3.4, B.3, B.4, B.5, C.2, C.3, D, E.4, F.3, H.2.2, I, J, M, P.10
Camp Koinonia	A.3.1, A.3.4, B.2, B.3, E.3
Communications Officer	A.3.2, A.3.4, B.2, B.3, E.3, F.4
County Commissioners	A.3.4, A.6, B.3, B.5, C.3, D, E.4, G.3, I, J, M
EMA Director	A.3.4, B.3, B.5, C.2, C.3, D, E.4, F.3, H.2.2, I, J, M, N, O, P
EOC Security Officer	A.3.1, B.2, B.3, H.2.4
Geneva Area City School District	A.3.1, A.3.4, B.2, E.4.2, F.2.3, J.4, J.5.1, J.5.7, K
Geneva State Park	A.3.1, A.3.4, A.3.5, B.2, B.3, E.3, J.4, K
Health District	A.3.4, B.2, E.3, J.4, J.5.3, J.6, L
Host Healthcare	A.3.1, A.3.4, B.2, B.3, E.3, J.4, J.5.6
Fire Departments Inside the EPZ	A.3.1, A.3.5, B.2, B.3, E.3, E.4.2, E.4.3, E.4.5, J.4, J.5.1, K, L.2, L.3
Fire Departments Outside the EPZ	A.3.4, A.3.5, B.2, E.3, J.5.1, J.5.4, J.5.8, K, L.2, L.3
Fire/EMS Coordinator	A.3.1, B.2, B.3, E.3, E.4.1, E.4.3, E.4.4, J.4, J.5.1
Job and Family Services	A.3.4, B.2, B.3, E.3, J.5.3, J.5.4
Law Enforcement Coordinator	A.3.4, B.2, B.3, E.3, E.4.4, H.2.4, J.4, J.5.2, M
Message Control	A.3.2, B.2, B.3, E.3, F.4
Notification	A.3.1, B.4, E.2, E.3, F.2, F.3, F.5

## APPENDIX 21

<b><u>SOG</u></b>	<b><u>Section of Plan Supported</u></b>
Operations Coordinator	A.3.4, B.3, B.5, C.2, C.3, F.3, H.2.3, J, M
Ohio State University Extension Service	A.3.4, B.2, B.3, E.3, I.2, J.2.2
Ohio State Highway Patrol	A.3.4, A.3.5, B.2, B.3, E.3, J.4, J.5.2, J.5.4, M.4, M.6
ORO Law Enforcement Agents	A.3.4, A.3.5, B.2, B.3, E.3, J.4, J.5, K, M.4, M.6
Pre-Schools /Day Cares	A.3.1, A.3.4, B.2, B.3, E.3
PIO Liaison	A.3.1, B.2, B.3, E.3, E.4.4, F.2.1, F.2.6, F.2.7, G.3, G.4, G.5
Public Information Officer	A.3.1, B.2, B.3, E.3, E.4.4, F.2.1, F.2.6, F.2.7, G.3, G.4, G.5
Public Inquiry	A.3.1, B.2, B.3, E.3, E.4.4, F.2.1, F.2.6, F.2.7, J.5.7, G.3, G.4, G.5
PNPP Liaison	A.3.4, B.3, B.5, C.2, C.3, H.2.3, I, J, M, N, O, P
Radiological Officer	A.3.5, B.2, B.3, E.2, E.3, J.5, K, L.2, M.6
Risk Healthcare	A.3.1, A.3.4, B.2, B.3, E.3, J.4, J.5.6
School Services Representative	A.3.4, B.2, B.3, E.3, E.4.3, J.4, J.5.7
Sheriff's Office	A.3.1, A.3.4, B.2, B.3, B.4, E.2, E.3, F.3, F.5, H.2.4, J.4, J.5.2, J.5.3, J.5.4, J.5.7, M.4, M.6
Support Schools	A.3.1, A.3.4, A.3.5, B.2, B.3, E.3, E.4.2, F.2.3, J.5.1, J.5.7, K
Support Staff	A.3.2, B.2, B.3, C.4, E.3, F.4, F.7, H.2, H.3
Transportation	A.3.4, B.2, B.3, E.3, E.4.3, J.5.1, M.6

<b><u>OTHER DOCUMENTS</u></b>	<b><u>Section of Plan Supported</u></b>
Comprehensive Training Program (CTP)	A.3, B.2, H.3.2, K.2, K.9, O, P.2
Evacuation Time Estimate Analysis (ETE)	A.3.4, E.4.4, G.2, J.2, J.4, J.5
Emergency Preparedness Information Brochure (EPI)	E.4.2, E.4.4, G.2, J.2, J.5.1,
Siren Activation SOP	A.3.1, E.4.1, H.2.2, J.4, J.5
Emergency Alert System (EAS) SOP	A.3.1, E.4.1, E.4.2, E.4.4, J.2.1, J.4, J.5

# Appendix 22

Revision 26  
January 2024

Planning Standard	Locations
<b>A</b>	
A.1.i	B.2, Appendix 3,4.
A.1.ii	B.2, Appendix 3,4.
A.1.a	
i.	A.3,B.2, B.3, Appendix 4,5,7.
A.1.b	
i.	Appendix 3
A.1.c	
i.	B.3, Appendix 4
ii	B.3, B.5, Appendix 4.
A.2	
i.	B.5
ii.	B.3, B.5, Commissioners SOG Part C
iii.	B.3, B.5, Commissioners SOG Part C
A.3	
i.	B.3, Appendix 3
ii.	Appendix 4, 5
iii.	Appendix 5
A.4	
i.	Appendix 6 (LOAs)
ii.	Appendix 6 (LOAs)
iii.	Appendix 6 (LOAs)
iv.	Appendix 6 (LOAs)
v.	Appendix 6 (LOAs)
A.5	
i.	B.4
ii.	B.3
iii.	Ashtabula EMA SOG. Roster is maintained on file at EMA and implemented in the Notification SOG.
iv.	B.3, B4
<b>B</b>	
<b>C</b>	
C.1	
i.	C.4
ii.	C.4
iii.	C.4
C.2.a	
i.	C.2, C.3 and Ashtabula County Emergency Operations Plan (EOP), Section IV F Annual reviews are documented in the ALC each year
C.2.b	
i.	C.3
ii.	C.3, Ashtabula County Emergency Operations Plan (EOP), Annex A
iii.	C.3, Ashtabula County Emergency Operations Plan (EOP), Annex A
iv.	C.3, Ashtabula County Emergency Operations Plan (EOP), Annex A

# Appendix 22

Revision 26  
January 2024

Planning Standard	Locations
v.	C.2, C.3
vi.	C.3
vii.	Ashtabula County Emergency Operations Plan (EOP), Annex A, Section II D and F
C.2.c	
i.	N/A - Host County Only
ii.	N/A - Host County Only
iii.	N/A - Host County Only
C.2.d	
i.	N/A - Licensee Responsibility
C.3	
i.	B.2, Appendix 3,4, 5
ii.	A.3,B.2, B.3, Appendix 4,5,7.
iii.	A.3,B.2, B.3, Appendix 4,5,7.
iv.	A.3,B.2, B.3, Appendix 4,5,7.
C.4	
i.	N/A - State Responsibility
ii.	N/A - State Responsibility
iii.	N/A - State Responsibility
iv.	N/A - State Responsibility
D	
D.1.b	
i.	D.2, D.3
ii.	D.3
iii.	D.3, Appendix 1
D.4	D.3, Appendix 7
i.	D.3, Appendix 7
E	
E.1	
i.	E.2,E.3
ii.	E.2, E.3, Appendix 7
iii.	E.2, Notification SOG
iv.	E.2, Notification SOG (B.6)
E.1.a	
i.	E.2
ii.	E.3, Notification SOG (Part 2)
iii.	E.3, B.4, Notification SOG (Part 1)
iv.	E.2, Notification SOG (B.6)
E.2	
i.	N/A - Licensee Responsibility
ii.	E.4.1, E.4.3, FDs inside EPZ SOG
iii.	
iii (a).	E.4.1, Siren SOP (Part 1 & 2)

# Appendix 22

Revision 26  
January 2024

Planning Standard	Locations
iii (b).	E.4.1, Siren SOP (Part 1 & 2)
iv.	E.4.2, EPI
v.	N/A - State Responsibility
vi.	N/A - State Responsibility
vii.	N/A - State Responsibility
viii.	E.4.4, Appendix 12, EAS SOP (Section II, III)
ix.	E.4.2, EAS SOP (Section II, III)
E.3	
i.	Appendix 8
ii.	Appendix 8
E.4	
i.	Appendix 12, EAS SOP (Pages 3 through 91)
ii.	E.4.4, Appendix 12
iii.	E.4.2, EAS SOP (Section II, III)
iv.	E.4.4, Appendix 12, EAS SOP (Section II, III)
v.	Not Required
E.5	
i.	E.4.4, Appendix 12, EAS SOP (Section II, III)
ii.	E.4.4, Appendix 12
iii.	E.4.4, Appendix 12, EAS SOP (Section II, III)
F	
F.1.a	
i.	F.2, F.3
ii.	F.2, Appendix 10
F.1.b	
i.	F.2, Appendix 10
ii.	F.1, Notification SOG Part 1
F.1.c	
i.	F.2, F.5, Appendix 10
ii.	F.2; Notification SOG (Att 61)
F.2	
i.	F.6, Appendix 10
F.3	
i.	F.7, N.3
G	
G.1	
i.	G.2
ii.	G.2, J.5.1, E.4.3, Job & Family Services SOG (Responsibilities)
iii.	G.2
iv.	G.2, G.3, E.4.3
v.	Not Required
G.2	
i.	G.3
ii.	N/A - Licensee Responsibility

# Appendix 22

Revision 26  
January 2024

Planning Standard	Locations
iii.	N/A - Licensee Responsibility
iv.	G.3, G.4
G.3	
i.	G.3, PIO SOG (Part 1)
ii.	G.3, PIO SOG (Part 2.C)
iii.	G.3, PIO SOG (Part 2.C)
iv.	G.3, PIO SOG (Part 2.C)
G.3.a	
i.	G.3
G.4	
i.	G.4
ii.	G.4, Appendix 11
iii.	G.4, PIO Liaison SOG (Section B), Public Inquiry SOG (Part 2)
iv.	G.4
G.5	
i.	N/A - Licensee Responsibility
ii.	N/A - Licensee Responsibility
iii.	N/A - Licensee Responsibility
H	
H.6	
i.	H.2.1, Appendix 13
ii.	H.2.1, H.2.3, EMA SOG (Section D)
iii.	H.2.2.
iv.	H.2.4
v.	H.2.2.
vi.	N/A
H.9	
i.	N/A - State Responsibility
ii.	N/A - State Responsibility
H.11	
i.	N/A - State Responsibility
ii.	N/A - State Responsibility
H.11.a	
i.	N/A - State Responsibility
H.11.b	
i.	N/A - State Responsibility
ii.	N/A - State Responsibility
iii.	N/A - State Responsibility
H.12	
i.	F.2, H.3, Appendix 14, FD Outside EPZ SOG (Att 27), The number and locations of kits is maintained by the OEMA RRA at Lake EOC
ii.	F.2, H.3, Appendix 14, FD Outside EPZ SOG (Att 27)
H.13	
i.	N/A - State Responsibility

# Appendix 22

Revision 26  
January 2024

Planning Standard	Locations
ii.	N/A - State Responsibility
iii.	N/A - State Responsibility
<b>I</b>	
I.2	
i.	N/A - State Responsibility
ii.	N/A - State Responsibility
I.5	
i.	N/A - State Responsibility
ii.	N/A - State Responsibility
I.6	
i.	N/A - State Responsibility
ii.	N/A - State Responsibility
iii.	N/A - State Responsibility
iv.	N/A - State Responsibility
v.	N/A - State Responsibility
vi.	N/A - State Responsibility
vii.	N/A - State Responsibility
viii.	N/A - State Responsibility
ix.	N/A - State Responsibility
x.	N/A - State Responsibility
xi.	N/A - State Responsibility
I.7	
i.	N/A - State Responsibility
ii.	N/A - State Responsibility
iii.	N/A - State Responsibility
I.8	
I.8	N/A - State Responsibility
ii.	N/A - State Responsibility
iii.	N/A - State Responsibility
iv.	N/A - State Responsibility
v.	N/A - State Responsibility
vi.	N/A - State Responsibility
vii.	N/A - State Responsibility
I.9	
i.	N/A - State Responsibility
I.10	
i.	N/A - State Responsibility
ii.	N/A - State Responsibility
<b>J</b>	
J.2	<b>N/A</b>
i.	N/A - Lake County Only
ii.	N/A - Lake County Only
iii.	N/A - Lake County Only
iv.	N/A - Lake County Only



# Appendix 22

Revision 26  
January 2024

Planning Standard	Locations
J.6	
i.	N/A - Licensee and State Responsibility
ii.	N/A - Licensee and State Responsibility
iii.	N/A - Licensee and State Responsibility
J.7	
i.	J.2, J.3
ii.	J.2, J.3
iii.	Appendix 2
J.8	
i.	J.5.9, Appendix 2
J.8.b	
i.	Appendix 2
ii.	ETE
iii.	ETE
iv.	ETE
v.	Appendix 2, Law Enforcement SOG (Section B)
J.9	
i.	N/A - Licensee and State only
J.10.a	
i.	Appendix 2
J.10.b	
i.	Appendix 2, 15, ETE
J.11	
i.	J.2, J.3, J.4, J.5
ii.	J.2, J.3, J.4, J.5
iii.	J.2, J.3, J.4, J.5
iv.	J.2, J.3, J.4, J.5
J.11.a	
i.	E.4.3, J.4, J.5.1, J.5.5, J.6
ii.	E.4.3
iii.	E.4.3, J.5.1., Job & Family Services SOG (Part 1)
iv.	E.4.3, J.5.1., Job & Family Services SOG (Part 1)
v.	J.4, J.5.1, J.5.5, Health District SOG (Sections B & C)
vi.	J.5.1, Transportation SOG (Sections B & C), Ashtabula County EOP
J.11.b	
i.	N/A - State Responsibility
ii.	N/A - State Responsibility
iii.	I.2, J.6, K.9
iv.	N/A - State Responsibility
v.	N/A - State Responsibility
vi.	I.2, J.6, K.9

# Appendix 22

Revision 26  
January 2024

Planning Standard	Locations
J.11.c	
i.	Appendix 2
ii.	J.5.2, J.5.4, Appendix 4, and 16
iii.	J.5.2, ORO Law Enforcement Agents SOG (OIC & TCO Section B & C)
J.11.d	
i.	J.5.3, J.5.5, J.5.6, Appendix 17, 19
ii.	J.5.3, Appendix 17
iii.	J.5.3, J.5.7, J.5.8, Appendix 17
iv.	J.5.6, Appendix 17
v.	J.5.5, Appendix 19
vi.	J.5.3, J.5.5, J.5.6, Appendix 17, 19
J.11.e	
i.	J.5.2, J.5.4, Appendix 4, and 16
ii.	J.5.2, J.5.4, Appendix 4, and 16
iii.	Appendix 16, Law Enforcement Coord SOG (Att 47)
iv.	J.5.2, ORO Law Enforcement Agents SOG (OIC & TCO Section B & C)
v.	J.5.2, J.5.4, Appendix 4, 16, ORO Law Enforcement Agents SOG (TCO Section B)
vi.	J.5.2, J.5.4, Appendix 4, 16, Law Enforcement Coord SOG (Section C)
J.11.f	
i.	J.5.2, Law Enforcement Coord SOG (Section C), Transportation Officer (Section B)
ii.	J.5.2, Law Enforcement Coord SOG (Section C), Transportation Officer (Section B)
iii.	J.5.2, Law Enforcement Coord SOG (Section C), Transportation Officer (Section B)
J.11.g	
i.	Appendix 7, School Services Representative SOG Part B
ii.	Appendix 7, School Services Representative SOG Part B
iii.	School Services Representative SOG Part B, Geneva Schools SOG Part B
J.12	
i.	J.2.2
ii.	N/A - State Responsibility
iii.	N/A - State Responsibility
iv.	N/A - State Responsibility
v.	N/A - State Responsibility
vi.	N/A - State Responsibility
vii.	N/A - State Responsibility
viii.	N/A - State Responsibility
ix.	N/A - State Responsibility
x.	N/A - State Responsibility
xi.	N/A - State Responsibility

# Appendix 22

Revision 26  
January 2024

Planning Standard	Locations
J.13	
i.	J.5.7, J.5.8
ii.	J.5.7,K.6,K.7 Appendix 20, FD Outside EPZ SOG
iii.	J.5.7,K.6,K.7, FD Outside EPZ SOG (Att 27)
iv.	FD Outside EPZ SOG
v.	J.5.7, J.5.8, K.6, K.7, Appendix 20. ARC treats service animal and owner as one
J.14	
i.	M.4.2, Ashtabula EOP Annex I
ii.	M.4.2, Ashtabula EOP Annex I
J.14.a	
i.	M.4.2, M.6, Ashtabula EOP Annex I
ii.	M.4.2, M.5, M.6
iii.	E.4.2, E.4.4, M.4.3
J.14.b	
i.	N/A - State Responsibility
ii.	N/A - State Responsibility
J.14.c	
i.	M.4.2
ii.	N/A - State Responsibility
J.14.d	
i.	M.4.3, M.6
ii.	M.4.3, M.6
iii.	M.4.3, M.6
iv.	M.4.3, M.6
J.14.e	
i.	M.4.3, M.6
J.14.f	
i.	M.7
ii.	M.7
K	
K.2	
i.	K.5,K.6, Appendix 20, Rad Officer SOG (Att 12 & 13)
ii.	K.5
iii.	K.5, ODH documents dose extensions
K.2.b	
i.	K.5,K.6, Appendix 20, Rad Officer SOG (Att 12 & 13)
ii.	K.5, Rad Officer SOG (Section C)
iii.	K.3, K.5, Rad Officer SOG (Section C)
iv.	K.5, ODH documents dose extensions
v.	K.5, Appendix 20
K.3	
i.	N/A - State Responsibility
ii.	N/A - State Responsibility

# Appendix 22

Revision 26  
January 2024

Planning Standard	Locations
iii.	K.2
iv.	K.2, K.4, H.4
v.	K.4, Rad Officer SOG (Att 12)
vi.	K.4, Rad Officer SOG (Att 12)
K.3.a	
i.	K.4, Rad Officer SOG (Att 12)
ii.	K.3, K.4, Rad Officer SOG (Att12)
iii.	K.3, K.4, Rad Officer SOG (Att12)
iv.	K.3
v.	K.3, Rad Officer SOG (Section C)
K.4	
i.	K.6, K.7, Appendix 20
ii.	J.5.7, J.5.8
iii.	Appendix 17
iv.	K.8, FD Outside EPZ SOG (Att 27), Appendix 17
v.	N/A State Responsibility
vi.	K.6, K.7, Appendix 20, FD Outside EPZ SOG (Att 27)
vii.	K.7,
viii.	K.7, K8
ix.	K.7
x.	K.6, K.7
xi.	K.6, K.7
L	
L.1	L.2
i.	K.8
ii.	N/A - Lake County Only
iii.	N/A - Lake County Only
iv.	N/A - Lake County Only
L.3	
i.	N/A - State Responsibility
L.4	
i.	L.3, Fire-EMS Liaison SOG (Section C)
ii.	L.3. Appendix 6, Fire-EMS Liaison SOG (Section C)
iii.	L.3. Appendix 6, Fire-EMS Liaison SOG (Section C)
iv.	L.3, Ambulance Providers SOG (Att 16)
v.	L.3, Ambulance Providers SOG (Att 16)
vi.	N/A - (Ambulance providers do not perform decontamination activities)
vii.	L.3, Ambulance Providers SOG (Section B Ambulance Crew)
M	
M.1	
i.	M.6, Appendix 4, 5
ii.	M.4, M.6, Part 2 - Relocation, Reentry, Return section of Commissioners and EMA Director SOGs

# Appendix 22

Revision 26  
January 2024

Planning Standard	Locations
iii.	M.4.3, Part 2 - Relocation, Reentry, Return section of Commissioners and EMA Director SOGs
iv.	M.6, M.7
M.1.b	
i.	M.4, M.6
ii.	Part 2 - Relocation, Reentry, Return section of Commissioners and EMA Director SOGs
iii.	Part 2 - Relocation, Reentry, Return section of Commissioners and EMA Director SOGs
iv.	Part 2 - Relocation, Reentry, Return section of Commissioners and EMA Director SOGs
v.	Part 2 - Relocation, Reentry, Return section of Commissioners and EMA Director SOGs
vi	Part 2 - Relocation, Reentry, Return section of Commissioners and EMA Director SOGs
M.4	
i.	Part 2 - Relocation, Reentry, Return section of Commissioners and EMA Director SOGs
ii.	M.6, M.7, Part 2 - Relocation, Reentry, Return section of Commissioners and EMA Director SOGs
iii.	M.6, M.7, Part 2 - Relocation, Reentry, Return section of Commissioners and EMA Director SOGs
iv.	M.6, M.7, Part 2 - Relocation, Reentry, Return section of Commissioners and EMA Director SOGs
M.5	
i.	M.5, M.6, M.7, Part 2 - Relocation, Reentry, Return section of Commissioners and EMA Director SOGs
ii.	M.5, M.6, M.7, Part 2 - Relocation, Reentry, Return section of Commissioners and EMA Director SOGs
iii.	M.6, M.7, Part 2 - Relocation, Reentry, Return section of Commissioners and EMA Director SOGs
M.6	
i.	M.6, M.7, Part 2 - Relocation, Reentry, Return section of Commissioners and EMA Director SOGs
ii.	M.6, M.7, Part 2 - Relocation, Reentry, Return section of Commissioners and EMA Director SOGs
M.7	
i.	N/A - State Responsibility
ii.	N/A - State Responsibility
iii.	N/A - State Responsibility
M.8	
i.	N/A - State Responsibility
ii.	N/A - State Responsibility
N	
N.1	
i.	N.2
N.1.a	

# Appendix 22

Revision 26  
January 2024

Planning Standard	Locations
i.	N.6
N.1.b	
	N.5, N.6, Ashtabula EMA SOG (Section B)
N.2	
i.	N.2, N.4
N.2.a	
i.	N.2, N.4
ii.	N.2, N.4
N.2.b	
i.	N/A - State Responsibility
ii.	N/A - State Responsibility
iii.	N/A - State Responsibility
N.3	N.2, N.4
i.	N.2
ii.	N.2
N.3.a	
i.	N.2
ii.	N/A - Licensee Responsibility
N.3.b	
i.	N/A - Licensee Responsibility
N.3.c	
i	N/A - Licensee Responsibility
N.3.c.1	
i.	N.2
N.3.c.2	
i.	N.2
N.3.d	
i.	N.2, N.4
ii.	N.2, N.4
N.4	
i.	N.3
N.4.b	
i.	N/A - Lake County Only
N.4.c	
i.	N/A - State Responsibility
N.4.d	
i.	N/A - State Responsibility
N.4.e	
i.	N/A - State Responsibility
ii.	N/A - State Responsibility
N.4.f	
i.	N.3
ii.	N.3
O	

# Appendix 22

Revision 26  
January 2024

Planning Standard	Locations
O.1	
i.	O.2, CTP "Comprehensive Training Program for the Radiological Emergency Response Plans of Ashtabula, Geauga, and Lake Counties".(CTP)
ii.	O.3,O.4, O.5, CTP
iii.	O.4, O.5, CTP, part iii B
iv.	O.4, O.5, CTP
v.	O.4, O.5, CTP
vi.	O.4, O.5, CTP
v.ii.	O.7
viii.	O.6
<b>P</b>	
P.1	
i.	P.2, O.4, O.5, CTP
ii.	P.2, O.4, O.5, CTP
P.2	
i.	P.2, O.4, O.5, CTP
P.3	
i.	P.3, Ashtabula EMA SOG (Section B)
P.4	
i.	P.3, Ashtabula EMA SOG (Section B)
ii.	P.3, RERP Revision Page, Ashtabula EMA SOG (Section C)
iii.	P.3, RERP Revision Page, Ashtabula EMA SOG (Section C)
iv.	P.3, Ashtabula EMA SOG (Section B)
v.	P.3
P.5	
i.	P.3, Appendix 4
ii.	Distribution page, P.3
iii.	P.3 and verified with email receipt
P.6	<b>P.4, Appendix 21</b>
i.	P.4, Appendix 21
ii.	P.4, Appendix 21
P.7	<b>Appendices List, Appendix 21</b>
i.	Appendix 21
ii.	Appendix 21, 22
P.8	<b>Table of Contents, Appendix 22</b>
i.	Table of Contents
ii.	Appendix 22
P.10	<b>P.3, Ashtabula EMA SOG</b>
i.	P.3, Ashtabula EMA SOG (Section D)