

RESOLUTION APPROVING THE DETAILED CONSTRUCTION PLANS FOR THE LENOX NEW LYME WATERLINE EXTENSION PROJECT, JEFFERSON TOWNSHIP, ACDES

WHEREAS, Doug Starkey, Director of the Ashtabula County Department of Environmental Services, has presented detailed construction plans prepared by CT Consultants, for the Lenox New Lyme Waterline Extension Project located in Jefferson Township:

WHEREAS, The project description is as follows:

The project consists of extension of water infrastructure along Lenox New Lyme. From South of State Route 307 to the DFC Mobile Home Park. This project includes the installation of a water booster station on State Route 307 near Lenox New Lyme.

WHEREAS, Doug Starkey, Director of ACDES, recommends approval of these plans; now

THEREFORE, BE IT RESOLVED, by the Board of County Commissioners of the County of Ashtabula, Ohio, that:

Section 1. The detailed construction plans for the Lenox New Lyme Waterline Extension Project in Jefferson Township is hereby approved.

Section 2. Those detailed plans shall be filed in the office of the Ashtabula County Sanitary Engineer, in the Department of Environmental Services and kept continuously on file there for inspection by all persons interested therein.

Section 3. This Board finds and determines that all formal actions of this Board concerning and relating to the adoption of this resolution were taken in an open meeting of the Board and all deliberations of this Board and of any of its committees that resulted in those formal actions were in meetings open to the public.

**ASHTABULA COUNTY COMMISSIONERS
CERTIFICATION PAGE**

Resolution No. 2024-92

February 06, 2024

**RESOLUTION APPROVING THE DETAILED CONSTRUCTION PLANS FOR THE
LENOX NEW LYME WATERLINE EXTENSION PROJECT, JEFFERSON TOWNSHIP,
ACDES**

Upon the motion of J.P. Ducro IV, seconded by Kathryn L. Whittington.

VOTE:

**Kathryn L. Whittington
J.P. Ducro IV
Casey R. Kozlowski**

**Aye
Aye
Absent**

CERTIFICATE OF CLERK

IT IS HEREBY CERTIFIED that the foregoing is a true and correct transcript of a resolution acted upon and duly passed by the Board of County Commissioners of Ashtabula County, Ohio, on the date noted above.



Lisa Hawkins, Clerk of the Board
Board of County Commissioners
Ashtabula County, Ohio

ASHTABULA COUNTY DEPARTMENT OF ENVIRONMENTAL SERVICES

LENOX NEW LYME WATERLINE EXTENSION

JEFFERSON TOWNSHIP

OHIO 811 DESIGN SERIAL NUMBER & UTILITY LIST: XX - STATE ROUTE 534

OHIO UTILITY PROTECTION SERVICE:
106 WEST RYEN, ROOM 427
YOUNGSTOWN, 44051
(800) 382-2764

ALL TEL:
360 HIGHLAND ROAD
MACEDONIA, OHIO 44067
(900) 782-8208

SPRINT:
PO BOX 3555
MANSFIELD, OHIO 44807
(900) 786-8272

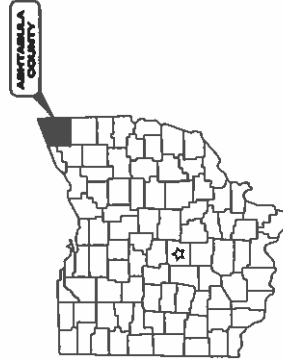
CLEVELAND ELECTRIC ILLUMINATING CO.:
2210 SOUTH RIDGE ROAD
ASHTABULA, OHIO 44004

THE EAST OHIO GAS COMPANY:
1910 WEST 30TH STREET
ASHTABULA, OHIO 44004
(440) 982-5100

ENVIRONMENTAL SERVICES:
38 W. WALNUT STREET
JEFFERSON, OHIO 44067
(440) 578-3722 PHONE
(440) 578-3781 FAX

TCI:
2804 STATE ROAD
ASHTABULA, OHIO 44004
(440) 986-2148

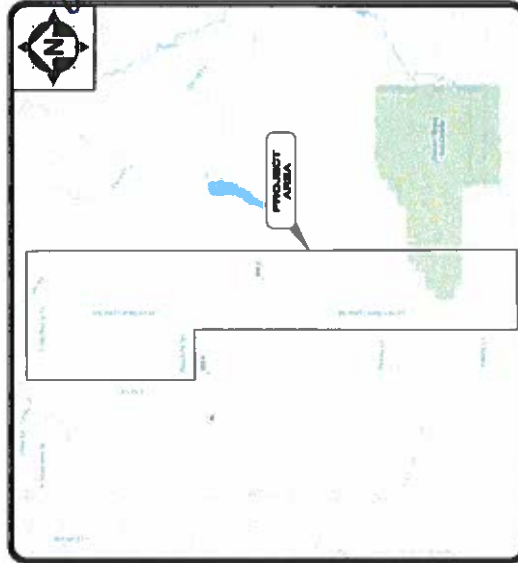
- UNDERGROUND BUILDING SERVICE UTILITY LINES ARE NOT SHOWN ON THE PLANS. THE CONTRACTOR SHALL BE RESPONSIBLE FOR LOCATING, MAINTAINING AND REPLACING AS NECESSARY TO ENSURE CONTINUAL SERVICE TO BUILDINGS.
- THE CONTRACTOR IS RESPONSIBLE TO CALL OHIO UTILITIES PROTECTION SERVICE @ 1-800-382-2764, THREE WORKING DAYS PRIOR TO CONSTRUCTION.



Ohio Utilities Protection Service
1-800-382-2764
www.ohio811.com

NOTE:
THE SURVEY WORK ON THESE PLANS WAS OBSERVED IN THE FIELD FOR ACCURACY. THE ENGINEER MAY NOT BE SUITABLE FOR PROPERTY LINE SURVEYS ON ANY OTHER PARCELS.

JANUARY 2024



LOCATION MAP
NOT TO SCALE



ENGINEER'S PROJECT No. 232009

ASHTABULA COUNTY APPROVALS:

	KATHRYN L. WHITTINGTON	DATE	2-6-24
	CASEY R. KOZLOWSKI	DATE	2-6-24
	J.P. DUCRO IV	DATE	
	DOUG STARKEY	DATE	

ENGINEER/ARCHITECT:

CT CONSULTANTS, INC.
8150 STERLING COURT
MENTOR, OH 44060
(440) 951-9000 PHONE
(440) 951-7487 FAX

GEORGIA CONWAY
P.E. No. E-85401
DATE 2/1/24



DATE	REVISION	BY	REASON	DATE

ASHTABULA COUNTY
LENOX LYME WATER BOOSTER STATION
JEFFERSON, OHIO
GENERAL - 00 SERIES
COVER SHEET

PROJECT NO.	DATE	SHEET NO.	TOTAL SHEETS

GENERAL SYMBOLOLOGY NOTES:

1. THIS IS A STANDARD SHEET BEARING COMMONLY USED SYMBOLOLOGY.
2. ALL SYMBOLS ARE NOT NECESSARILY USED ON THIS PROJECT.
3. REFERENCED OR SHOWN ON WORK IS USED TO SPECIFY EXISTING CONDITIONS OR TO SHOW WORK TO BE DONE TO CORRECT OR TO ADD TO EXISTING WORK.
4. SYMBOLS OR DIMENSIONAL LETTERS MAY BE SHOWN ON SEPARATE SHEETS FOR DIMENSIONAL DETAILS.

PLAN REVISIONS: DEMOLITION CODED NOTES:

- 1 DEMOLITION DESCRIPTION
- 2 DEMOLITION DESCRIPTION

REFERENCE DIMENSION:

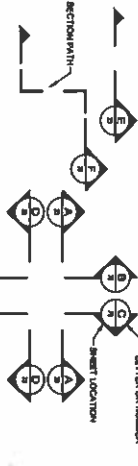
12" = 1'-0"

REFERENCED DIMENSIONS ARE SHOWN ON DIMENSIONAL DETAILS ONLY. THEY ARE NOT USED ON THIS SHEET UNLESS SPECIFICALLY REFERENCED BY DIMENSIONAL DETAILS.

DETAIL REFERENCES:



MAJOR SECTION CUT CONVENTIONS:



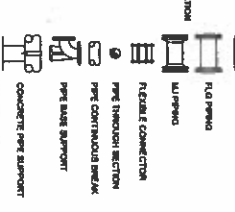
UTILITIES - ELECTRIC:

PROPOSED:	ALL	ELECTRIC LINE
EXISTING:	ALL	ELECTRIC LINE - OH
	ALL	ELECTRIC LINE - UV
	ALL	Q&C SERVICE - OH
	ALL	Q&C SERVICE - UV
	ALL	Q&C SERVICE - OH
	ALL	Q&C SERVICE - UV
	ALL	REC LIGHTING - OH
	ALL	REC LIGHTING - UV

UTILITIES - GAS:

PROPOSED:	ALL	GAS LINE
EXISTING:	ALL	GAS SERVICE
	ALL	GAS LINE
	ALL	GAS SERVICE

MISC PIPE SYMBOLOLOGY



DRAWING CODED NOTE TYPES:

1. CONSTRUCTION NOTES ARE IDENTIFIED WITH A NUMBER, SQUARE OR CIRCLE ON THE SHEET. ALL OTHER CADDING WITHIN THE CADDING FROM THE SHEET IS IDENTIFIED WITH A NUMBER OF THOSE NOTES FROM THE SQUARE DIMENSION REFERENCE TO PREVIOUS WORK DONE.

GENERAL ABBREVIATIONS:

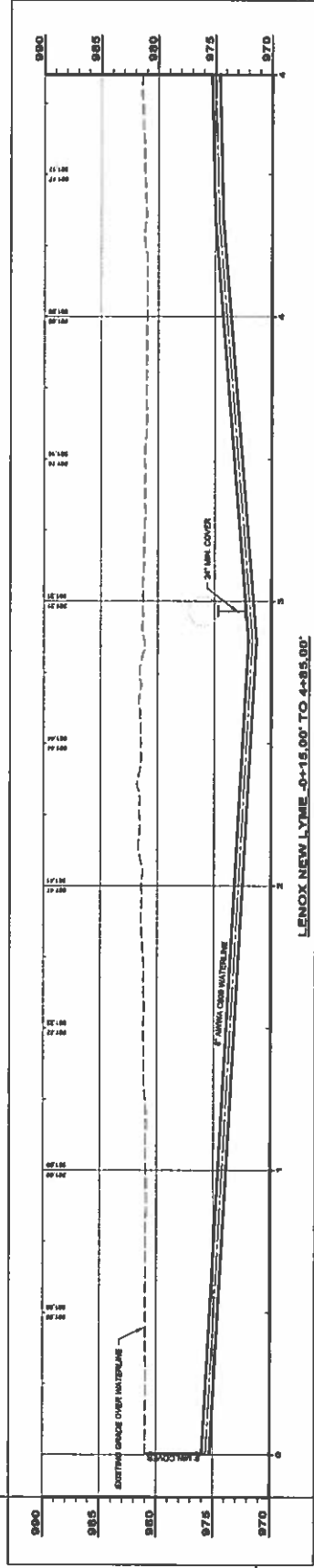
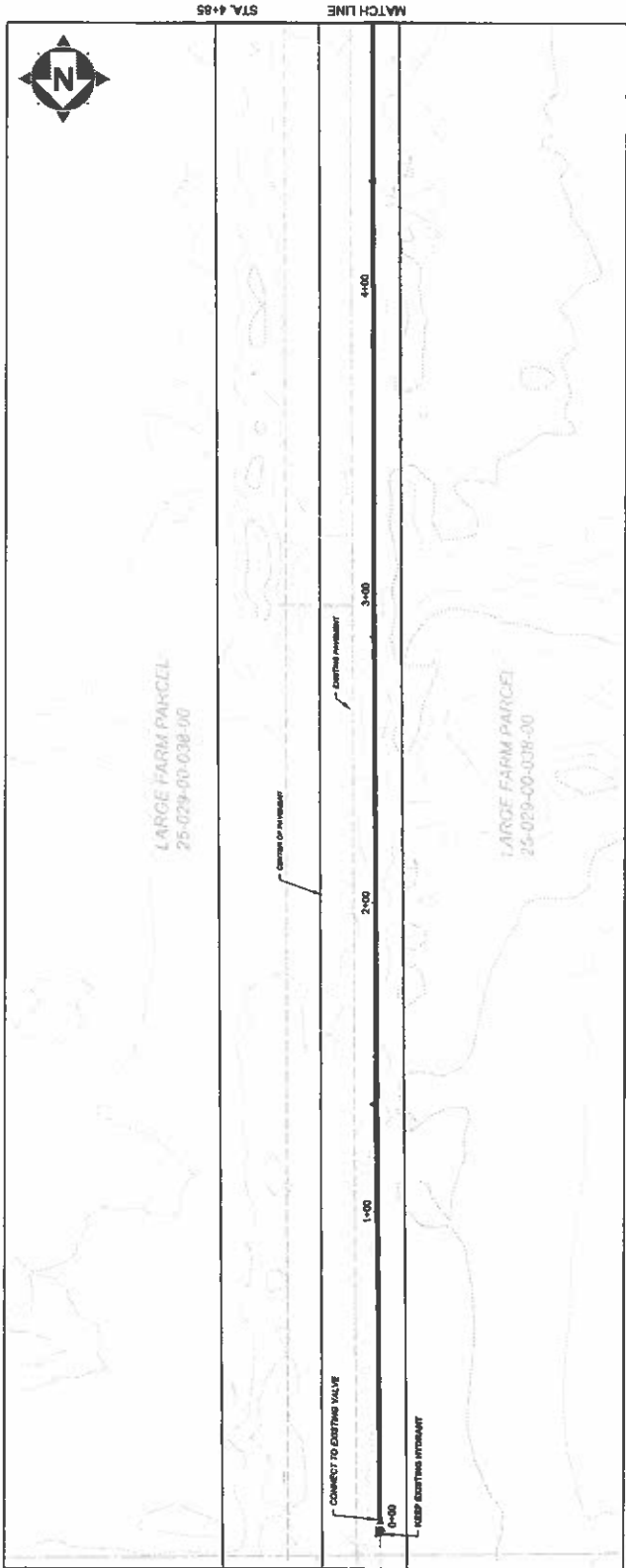
AV	AV RELIEF VALVE	AV	AV VALVE
BV	BALL VALVE	CH	CHIMNEY
BY	BUTTERFLY VALVE	CO	CORNER VALVE
BS	BRICK SHED	CC	CONTROL VALVE
BA	BASIN	CD	CORNER VALVE
BI	BIBULOUS PREVENTER	CF	CORNER VALVE
BU	BURIED VALVE	CP	CORNER VALVE
CO	CONTROL VALVE	CR	CORNER VALVE
CC	CORNER VALVE	CS	CORNER VALVE
CD	CORNER VALVE	CV	CORNER VALVE
CE	CORNER VALVE	CA	CORNER VALVE
CF	CORNER VALVE	CB	CORNER VALVE
CG	CORNER VALVE	CC	CORNER VALVE
CH	CHIMNEY	CD	CORNER VALVE
CI	CORNER VALVE	CE	CORNER VALVE
CJ	CORNER VALVE	CF	CORNER VALVE
CK	CORNER VALVE	CG	CORNER VALVE
CL	CORNER VALVE	CH	CHIMNEY
CM	CORNER VALVE	CI	CORNER VALVE
CN	CORNER VALVE	CJ	CORNER VALVE
CO	CORNER VALVE	CK	CORNER VALVE
CP	CORNER VALVE	CL	CORNER VALVE
CQ	CORNER VALVE	CM	CORNER VALVE
CR	CORNER VALVE	CN	CORNER VALVE
CS	CORNER VALVE	CO	CORNER VALVE
CT	CORNER VALVE	CP	CORNER VALVE
CU	CORNER VALVE	CQ	CORNER VALVE
CV	CORNER VALVE	CR	CORNER VALVE
CW	CORNER VALVE	CS	CORNER VALVE
CX	CORNER VALVE	CT	CORNER VALVE
CY	CORNER VALVE	CU	CORNER VALVE
CZ	CORNER VALVE	CV	CORNER VALVE
DA	CORNER VALVE	CW	CORNER VALVE
DB	CORNER VALVE	CX	CORNER VALVE
DC	CORNER VALVE	CY	CORNER VALVE
DD	CORNER VALVE	CZ	CORNER VALVE
DE	CORNER VALVE	DA	CORNER VALVE
DF	CORNER VALVE	DB	CORNER VALVE
DG	CORNER VALVE	DC	CORNER VALVE
DH	CORNER VALVE	DD	CORNER VALVE
DI	CORNER VALVE	DE	CORNER VALVE
DJ	CORNER VALVE	DF	CORNER VALVE
DK	CORNER VALVE	DG	CORNER VALVE
DL	CORNER VALVE	DH	CORNER VALVE
DM	CORNER VALVE	DI	CORNER VALVE
DN	CORNER VALVE	DJ	CORNER VALVE
DO	CORNER VALVE	DK	CORNER VALVE
DP	CORNER VALVE	DL	CORNER VALVE
DQ	CORNER VALVE	DM	CORNER VALVE
DR	CORNER VALVE	DN	CORNER VALVE
DS	CORNER VALVE	DO	CORNER VALVE
DT	CORNER VALVE	DP	CORNER VALVE
DU	CORNER VALVE	DQ	CORNER VALVE
DV	CORNER VALVE	DR	CORNER VALVE
DW	CORNER VALVE	DS	CORNER VALVE
DX	CORNER VALVE	DT	CORNER VALVE
DY	CORNER VALVE	DU	CORNER VALVE
DZ	CORNER VALVE	DV	CORNER VALVE
EA	CORNER VALVE	DW	CORNER VALVE
EB	CORNER VALVE	DX	CORNER VALVE
EC	CORNER VALVE	DY	CORNER VALVE
ED	CORNER VALVE	DZ	CORNER VALVE
EE	CORNER VALVE	EA	CORNER VALVE
EF	CORNER VALVE	EB	CORNER VALVE
EG	CORNER VALVE	EC	CORNER VALVE
EH	CORNER VALVE	ED	CORNER VALVE
EI	CORNER VALVE	EE	CORNER VALVE
EJ	CORNER VALVE	EF	CORNER VALVE
EK	CORNER VALVE	EG	CORNER VALVE
EL	CORNER VALVE	EH	CORNER VALVE
EM	CORNER VALVE	EI	CORNER VALVE
EN	CORNER VALVE	EJ	CORNER VALVE
EO	CORNER VALVE	EK	CORNER VALVE
EP	CORNER VALVE	EL	CORNER VALVE
EQ	CORNER VALVE	EM	CORNER VALVE
ER	CORNER VALVE	EN	CORNER VALVE
ES	CORNER VALVE	EO	CORNER VALVE
ET	CORNER VALVE	EP	CORNER VALVE
EU	CORNER VALVE	EQ	CORNER VALVE
EV	CORNER VALVE	ER	CORNER VALVE
EW	CORNER VALVE	ES	CORNER VALVE
EX	CORNER VALVE	ET	CORNER VALVE
EY	CORNER VALVE	EU	CORNER VALVE
EZ	CORNER VALVE	EV	CORNER VALVE
FA	CORNER VALVE	EW	CORNER VALVE
FB	CORNER VALVE	EY	CORNER VALVE
FC	CORNER VALVE	EZ	CORNER VALVE
FD	CORNER VALVE	FA	CORNER VALVE
FE	CORNER VALVE	FB	CORNER VALVE
FF	CORNER VALVE	FC	CORNER VALVE
FG	CORNER VALVE	FD	CORNER VALVE
FH	CORNER VALVE	FE	CORNER VALVE
FI	CORNER VALVE	FF	CORNER VALVE
FJ	CORNER VALVE	FG	CORNER VALVE
FK	CORNER VALVE	FH	CORNER VALVE
FL	CORNER VALVE	FI	CORNER VALVE
FM	CORNER VALVE	FJ	CORNER VALVE
FN	CORNER VALVE	FK	CORNER VALVE
FO	CORNER VALVE	FL	CORNER VALVE
FP	CORNER VALVE	FM	CORNER VALVE
FQ	CORNER VALVE	FN	CORNER VALVE
FR	CORNER VALVE	FO	CORNER VALVE
FS	CORNER VALVE	FP	CORNER VALVE
FT	CORNER VALVE	FQ	CORNER VALVE
FU	CORNER VALVE	FR	CORNER VALVE
FV	CORNER VALVE	FS	CORNER VALVE
FW	CORNER VALVE	FT	CORNER VALVE
FX	CORNER VALVE	FU	CORNER VALVE
FY	CORNER VALVE	FW	CORNER VALVE
FZ	CORNER VALVE	FX	CORNER VALVE
GA	CORNER VALVE	FY	CORNER VALVE
GB	CORNER VALVE	FZ	CORNER VALVE
GC	CORNER VALVE	GA	CORNER VALVE
GD	CORNER VALVE	GB	CORNER VALVE
GE	CORNER VALVE	GC	CORNER VALVE
GF	CORNER VALVE	GD	CORNER VALVE
GG	CORNER VALVE	GE	CORNER VALVE
GH	CORNER VALVE	GF	CORNER VALVE
GI	CORNER VALVE	GG	CORNER VALVE
GJ	CORNER VALVE	GH	CORNER VALVE
GK	CORNER VALVE	GI	CORNER VALVE
GL	CORNER VALVE	GJ	CORNER VALVE
GM	CORNER VALVE	GK	CORNER VALVE
GN	CORNER VALVE	GL	CORNER VALVE
GO	CORNER VALVE	GM	CORNER VALVE
GP	CORNER VALVE	GN	CORNER VALVE
GQ	CORNER VALVE	GO	CORNER VALVE
GR	CORNER VALVE	GP	CORNER VALVE
GS	CORNER VALVE	GQ	CORNER VALVE
GT	CORNER VALVE	GR	CORNER VALVE
GU	CORNER VALVE	GS	CORNER VALVE
GV	CORNER VALVE	GT	CORNER VALVE
GW	CORNER VALVE	GU	CORNER VALVE
GX	CORNER VALVE	GV	CORNER VALVE
GY	CORNER VALVE	GW	CORNER VALVE
GZ	CORNER VALVE	GX	CORNER VALVE
HA	CORNER VALVE	GY	CORNER VALVE
HB	CORNER VALVE	GZ	CORNER VALVE
HC	CORNER VALVE	HA	CORNER VALVE
HD	CORNER VALVE	HB	CORNER VALVE
HE	CORNER VALVE	HC	CORNER VALVE
HF	CORNER VALVE	HD	CORNER VALVE
HG	CORNER VALVE	HE	CORNER VALVE
HH	CORNER VALVE	HF	CORNER VALVE
HI	CORNER VALVE	HG	CORNER VALVE
HO	CORNER VALVE	HH	CORNER VALVE
HP	CORNER VALVE	HO	CORNER VALVE
HQ	CORNER VALVE	HP	CORNER VALVE
HR	CORNER VALVE	HQ	CORNER VALVE
HS	CORNER VALVE	HR	CORNER VALVE
HT	CORNER VALVE	HS	CORNER VALVE
HU	CORNER VALVE	HT	CORNER VALVE
HV	CORNER VALVE	HU	CORNER VALVE
HW	CORNER VALVE	HV	CORNER VALVE
HX	CORNER VALVE	HW	CORNER VALVE
HY	CORNER VALVE	HX	CORNER VALVE
HZ	CORNER VALVE	HY	CORNER VALVE
IA	CORNER VALVE	HZ	CORNER VALVE
IB	CORNER VALVE	IA	CORNER VALVE
IC	CORNER VALVE	IB	CORNER VALVE
ID	CORNER VALVE	IC	CORNER VALVE
IE	CORNER VALVE	ID	CORNER VALVE
IF	CORNER VALVE	IE	CORNER VALVE
IG	CORNER VALVE	IF	CORNER VALVE
IH	CORNER VALVE	IG	CORNER VALVE
II	CORNER VALVE	IH	CORNER VALVE
IO	CORNER VALVE	II	CORNER VALVE
IP	CORNER VALVE	IO	CORNER VALVE
IQ	CORNER VALVE	IP	CORNER VALVE
IR	CORNER VALVE	IQ	CORNER VALVE
IS	CORNER VALVE	IR	CORNER VALVE
IT	CORNER VALVE	IS	CORNER VALVE
IU	CORNER VALVE	IT	CORNER VALVE
IV	CORNER VALVE	IU	CORNER VALVE
IV	CORNER VALVE	IV	CORNER VALVE
IY	CORNER VALVE	IY	CORNER VALVE
IZ	CORNER VALVE	IZ	CORNER VALVE
JA	CORNER VALVE	JA	CORNER VALVE
JB	CORNER VALVE	JB	CORNER VALVE
JC	CORNER VALVE	JC	CORNER VALVE
JD	CORNER VALVE	JD	CORNER VALVE
JE	CORNER VALVE	JE	CORNER VALVE
JF	CORNER VALVE	JF	CORNER VALVE
JG	CORNER VALVE	JG	CORNER VALVE
JH	CORNER VALVE	JH	CORNER VALVE
JI	CORNER VALVE	JI	CORNER VALVE
JO	CORNER VALVE	JO	CORNER VALVE
JP	CORNER VALVE	JP	CORNER VALVE
JQ	CORNER VALVE	JQ	CORNER VALVE
JR	CORNER VALVE	JR	CORNER VALVE
JS	CORNER VALVE	JS	CORNER VALVE
JT	CORNER VALVE	JT	CORNER VALVE
JU	CORNER VALVE	JU	CORNER VALVE
JV	CORNER VALVE	JV	CORNER VALVE
JW	CORNER VALVE	JW	CORNER VALVE
JX	CORNER VALVE	JX	CORNER VALVE
JY	CORNER VALVE	JY	CORNER VALVE
JZ	CORNER VALVE	JZ	CORNER VALVE
KA	CORNER VALVE	KA	CORNER VALVE
KB	CORNER VALVE	KB	CORNER VALVE
KC	CORNER VALVE	KC	CORNER VALVE
KD	CORNER VALVE	KD	CORNER VALVE
KE	CORNER VALVE	KE	CORNER VALVE
KF	CORNER VALVE	KF	CORNER VALVE
KG	CORNER VALVE	KG	CORNER VALVE
KH	CORNER VALVE	KH	CORNER VALVE
KI	CORNER VALVE	KI	CORNER VALVE
KJ	CORNER VALVE	KJ	CORNER VALVE
KK	CORNER VALVE	KK	CORNER VALVE
KL	CORNER VALVE	KL	CORNER VALVE
KM	CORNER VALVE	KM	CORNER VALVE
KN	CORNER VALVE	KN	CORNER VALVE
KO	CORNER VALVE	KO	CORNER VALVE
KP	CORNER VALVE	KP	CORNER VALVE
KQ	CORNER VALVE	KQ	CORNER VALVE
KR	CORNER VALVE	KR	CORNER VALVE
KS	CORNER VALVE	KS	CORNER VALVE
KT	CORNER VALVE	KT	CORNER VALVE
KU	CORNER VALVE	KU	CORNER VALVE
KV	CORNER VALVE	KV	CORNER VALVE
KW	CORNER VALVE	KW	CORNER VALVE
KX	CORNER VALVE	KX	CORNER VALVE
KY	CORNER VALVE	KY	CORNER VALVE
KZ	CORNER VALVE	KZ	CORNER VALVE
LA	CORNER VALVE	LA	CORNER VALVE
LB	CORNER VALVE	LB	CORNER VALVE
LC	CORNER VALVE	LC	CORNER VALVE
LD	CORNER VALVE	LD	CORNER VALVE
LE	CORNER VALVE	LE	CORNER VALVE
LF	CORNER VALVE	LF	CORNER VALVE
LG	CORNER VALVE	LG	CORNER VALVE
LH	CORNER VALVE	LH	CORNER VALVE
LI	CORNER VALVE	LI	CORNER VALVE
LJ	CORNER VALVE	LJ	CORNER VALVE
LK	CORNER VALVE	LK	CORNER VALVE
LL	CORNER VALVE	LL	CORNER VALVE
LO	CORNER VALVE	LO	CORNER VALVE
LP	CORNER VALVE	LP	CORNER VALVE
LQ	CORNER VALVE	LQ	CORNER VALVE
LR	CORNER VALVE	LR	CORNER VALVE
LS	CORNER VALVE	LS	CORNER VALVE
LT	CORNER VALVE	LT	CORNER VALVE
LU	CORNER VALVE	LU	CORNER VALVE
LV	CORNER VALVE	LV	CORNER VALVE
LW	CORNER VALVE	LW	CORNER VALVE
LX	CORNER VALVE	LX	CORNER VALVE
LY	CORNER VALVE	LY	CORNER VALVE
LZ	CORNER VALVE	LZ	CORNER VALVE
MA	CORNER VALVE	MA	CORNER VALVE
MB	CORNER VALVE	MB	CORNER VALVE
MC	CORNER VALVE	MC	CORNER VALVE
MD	CORNER VALVE	MD	CORNER VALVE
ME	CORNER VALVE	ME	CORNER VALVE
MF	CORNER VALVE	MF	CORNER VALVE
MG	CORNER VALVE	MG	CORNER VALVE
MH	CORNER VALVE	MH	CORNER VALVE
MI	CORNER VALVE	MI	CORNER VALVE
MJ	CORNER VALVE	MJ	CORNER VALVE
MK	CORNER VALVE	MK	CORNER VALVE
ML	CORNER VALVE	ML	CORNER VALVE
MO	CORNER VALVE	MO	CORNER VALVE
MP	CORNER VALVE	MP	CORNER VALVE
MQ			



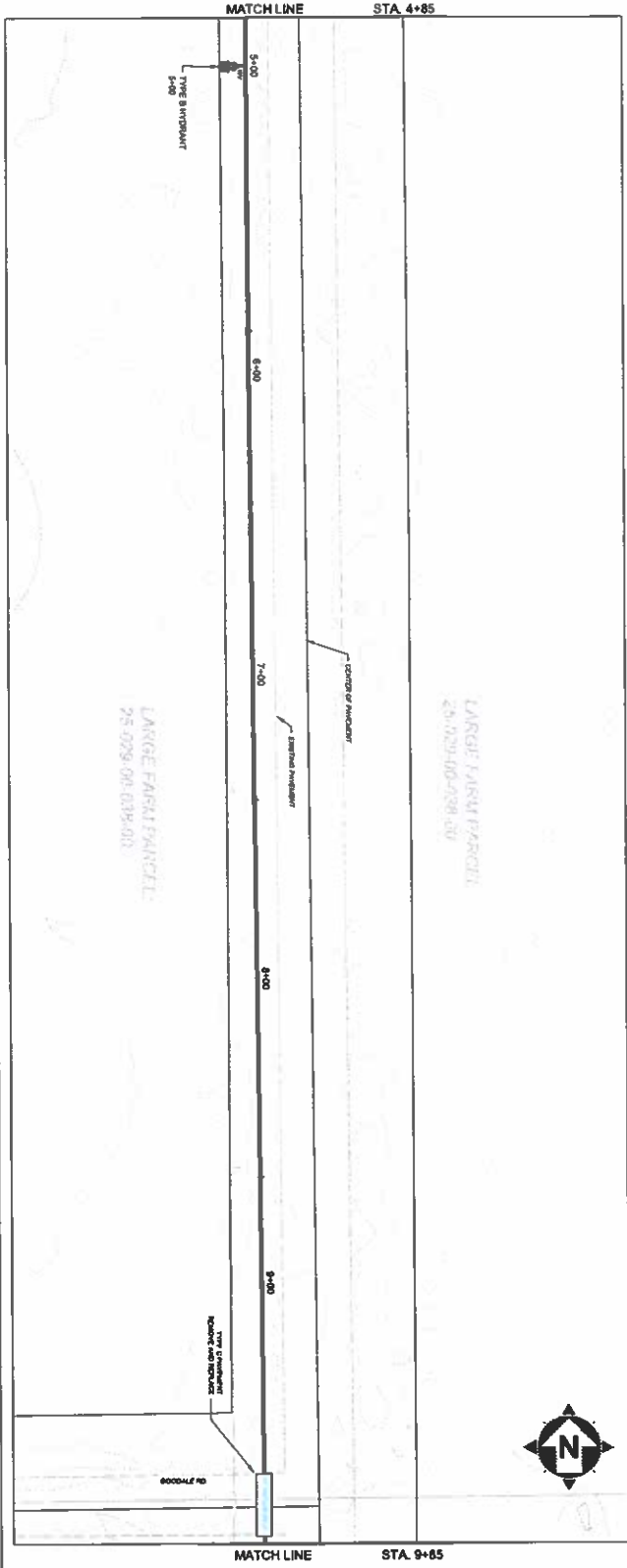
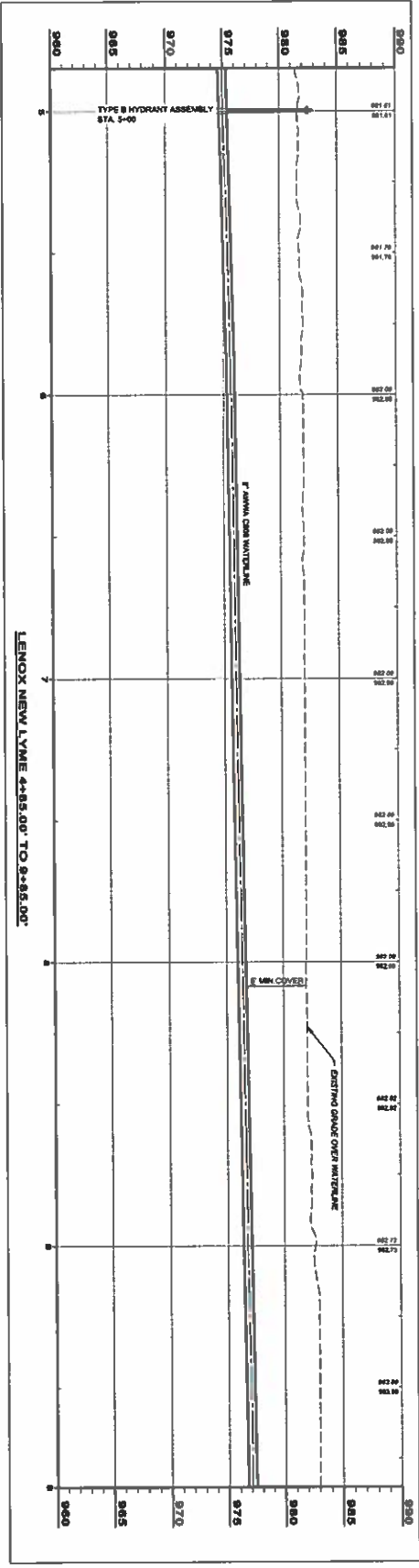
DATE	REVISION	NO.	DESCRIPTION

ASHTABULA COUNTY	LENOX LIME WATER BOOSTER STATION
ASHTABULA COUNTY	JEFFRESON, OHIO
PLAN AND PROFILE - 10 SERIES	PLAN AND PROFILE - 0+15 TO 4+85
DESIGNED BY	JMB
CHECKED BY	QBC
SCALE	AS NOTED
DATE	1/11/24
REVIEW EST.	NO.
REVISION	NO.
DATE	

PROJECT NO.	10PP-01
SHEET NO.	5
TOTAL SHEETS	26
DATE	



LENOX NEW LIME WATER BOOSTER STATION
 SCALE: HORIZ. 1" = 20'
 VERT. 1" = 5'



LENOX NEW LYME 4+85.00' TO 9+85.00'

SCALE HORZ. 1" = 20'

SCALE VERT. 1" = 5'

NO.	6
DATE	2/25
PROJECT NO.	223-20000
CLIENT	ASHTABULA COUNTY
PROJECT	LENOX LYME WATER BOOSTER STATION

ASHTABULA COUNTY
LENOX LYME WATER BOOSTER STATION
 ASHTABULA COUNTY JEFFERSON, OHIO
PLAN AND PROFILE - 10 SERIES
PLAN-AND-PROFILE - 4+85 TO 9+85

ISSUED FOR	REVIEW SET	NO.	REVISION	DATE
ISSUE DATE	1-31-24			
SCALE	AS NOTED			
DRAWN BY	GBC & MLS			
CHECKED BY	JOB			
	GBC			



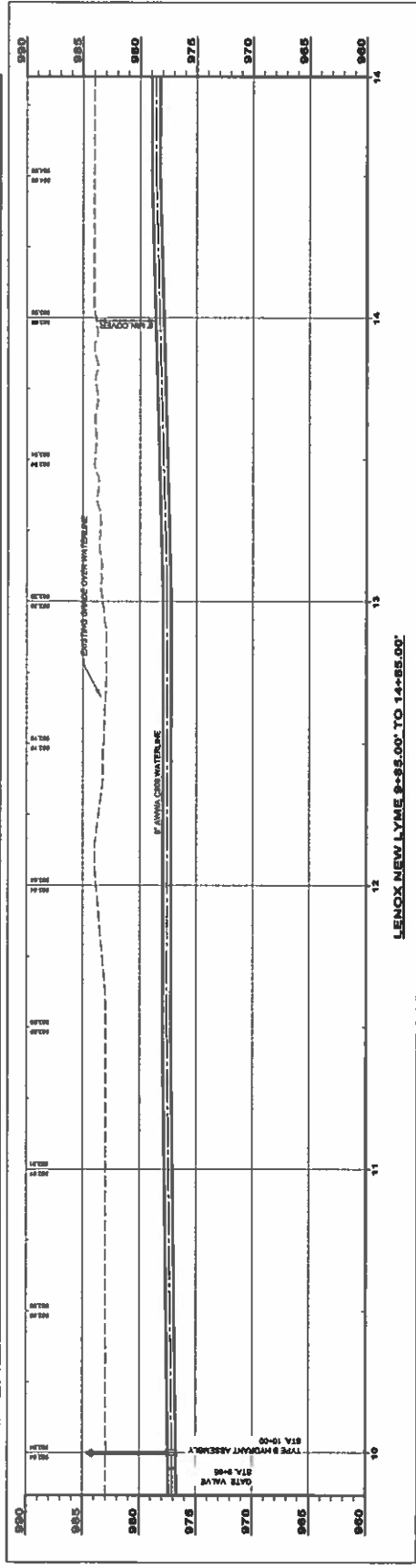
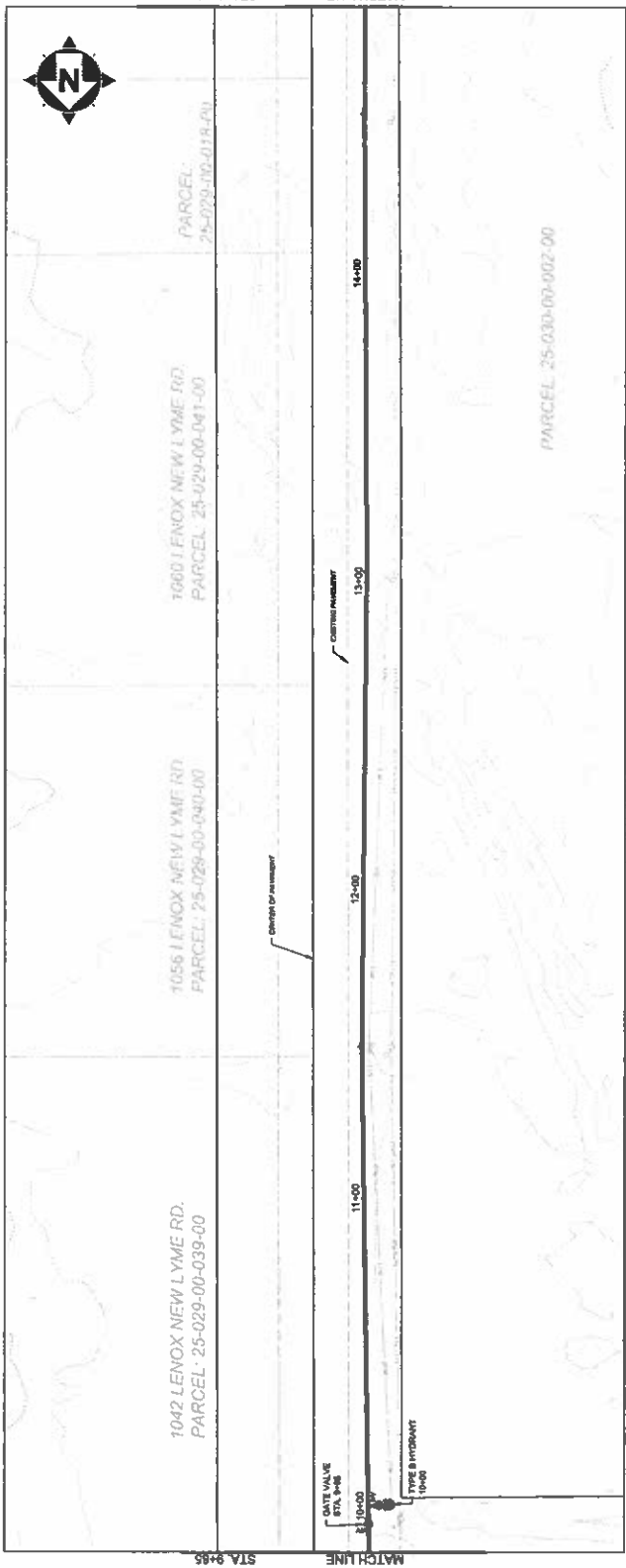


DATE	
REVISION	
NO.	
DESCRIPTION	
DATE	
BY	
CHECKED BY	
DATE	
DESIGNED BY	
DATE	
SCALE	
PROJECT NO.	
PROJECT NAME	

PROJECT NO.	10967
PROJECT NAME	LENOX LYME WATER BOOSTER STATION
CIVIL	
SCALE	
DATE	
BY	
CHECKED BY	
DATE	
DESIGNED BY	
DATE	
SCALE	
PROJECT NO.	
PROJECT NAME	

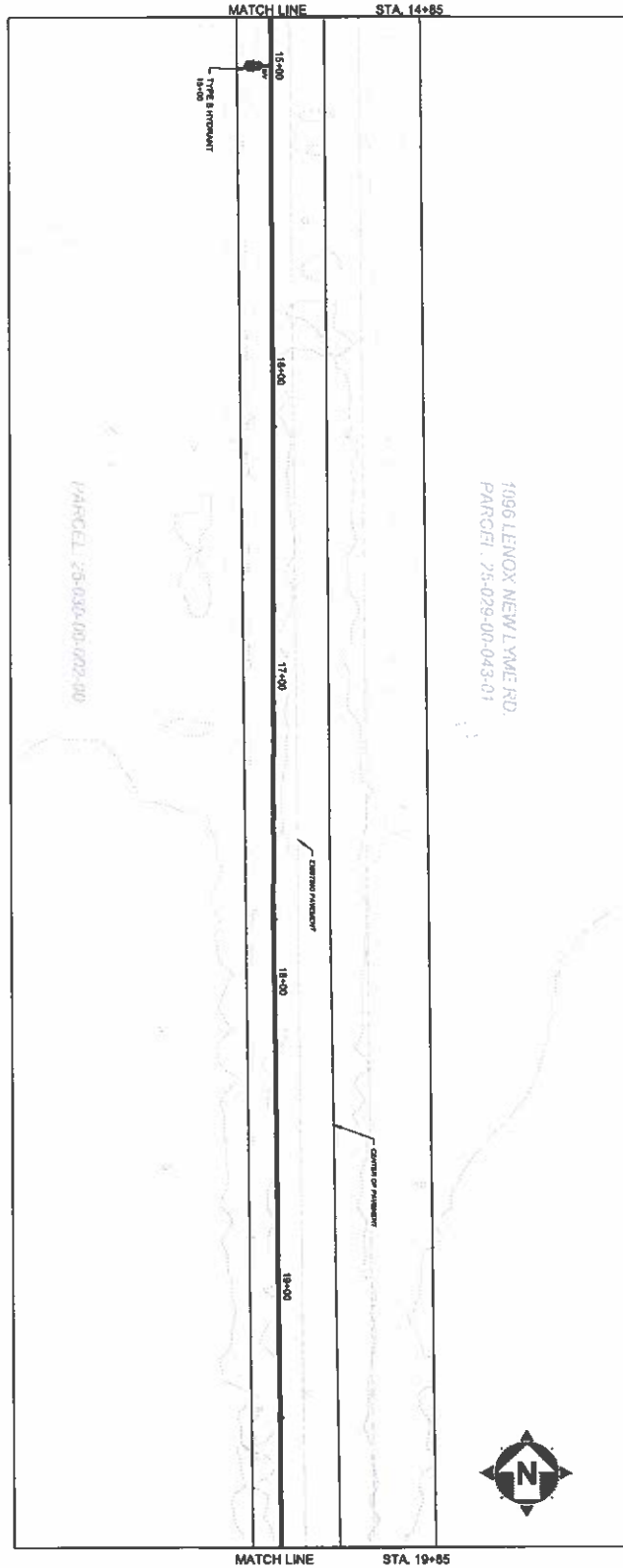
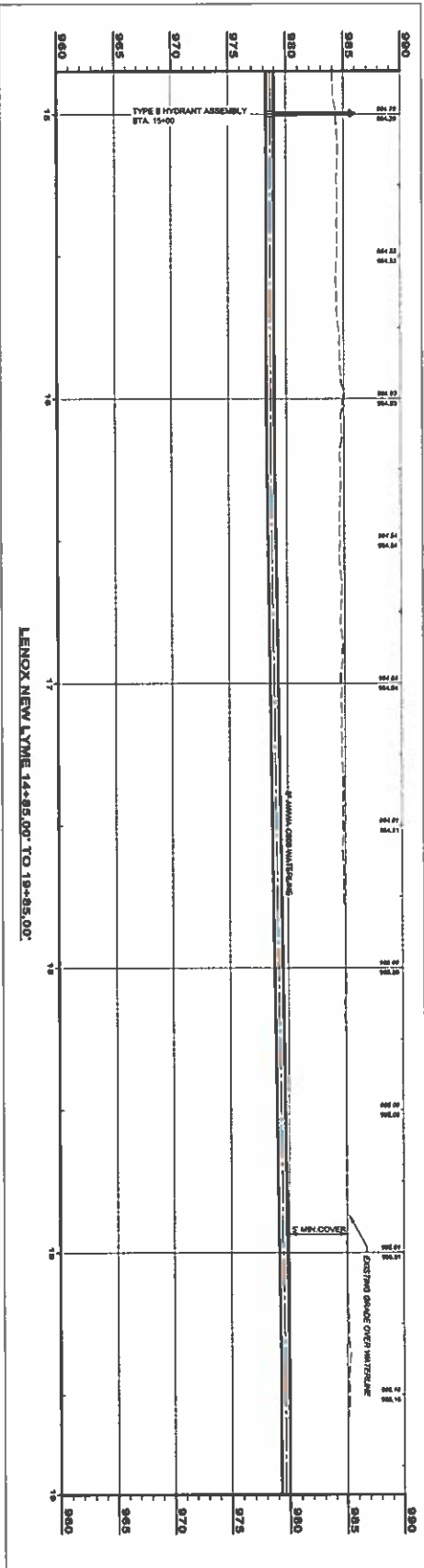
DATE	
BY	
CHECKED BY	
DATE	
DESIGNED BY	
DATE	
SCALE	
PROJECT NO.	
PROJECT NAME	

7 25



SCALE: HORIZ. 1" = 20'
VERT. 1" = 2'

LENOX NEW LYME 9+85.00' TO 14+85.00'



LENOX LYME 14+85.00' TO 19+85.00'

SCALE: HORIZ. 1" = 20'

VERT. 1" = 5'

ASHTABULA COUNTY	
LENOX LYME WATER BOOSTER STATION	
ASHTABULA COUNTY	JEFFERSON, OHIO
PLAN AND PROFILE - 10 SERIES	
PLAN-AND-PROFILE - 14+85 to 19+85	

ISSUED FOR:	REVIEW SET:	NO.	REVISION:	DATE:
ISSUE DATE:	1-31-24			
SCALE:	AS NOTED			
DRAWN BY:	OSB & MLE			
CHECKED BY:	OSB			

you invited architect-engineers
consultants
 architects
 engineers

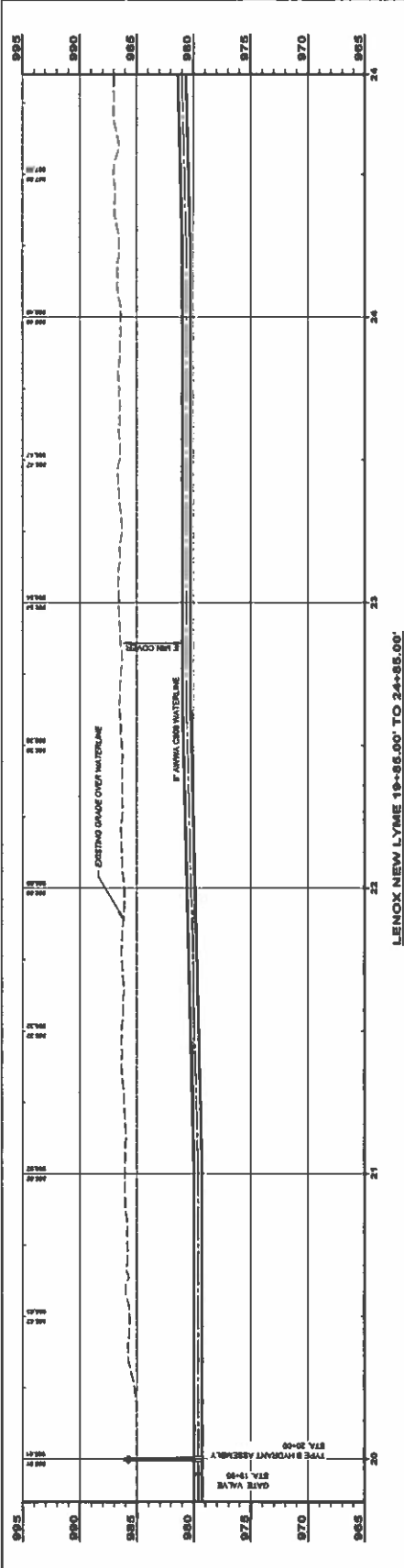
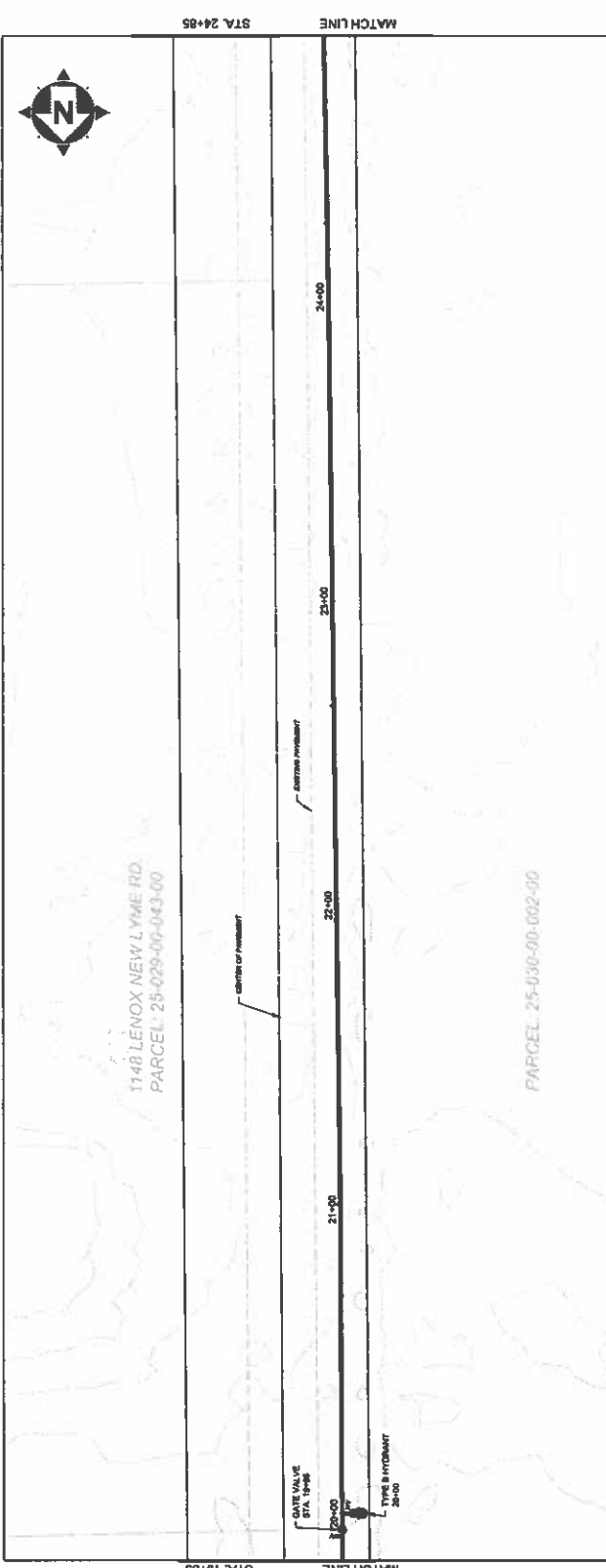




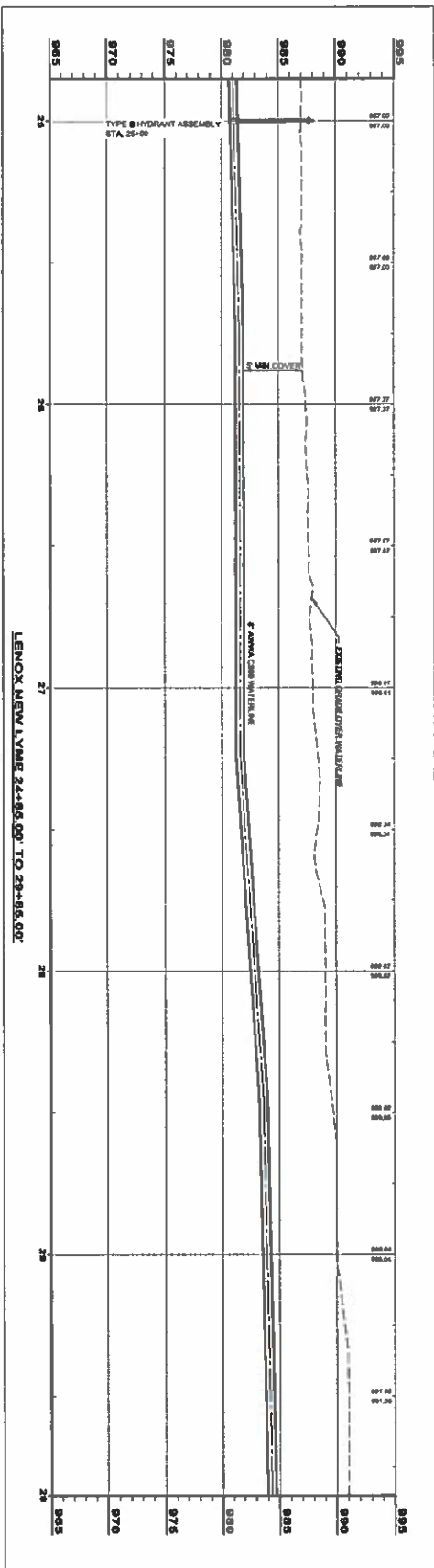
DATE	APPROVED BY	DATE	DESIGNED BY
			JMB
			DESIGNED BY: GBC & MLL
			SCALE: AS NOTED
			PROJECT DATE: 1-13-24
			PROJECT NO.: REVIEW SET

ASHTABULA COUNTY
 LENOX LYME WATER BOOSTER STATION
 ASHTABULA COUNTY
 JEFFERSON, OHIO
 PLAN AND PROFILE - 10 SERIES
 PLAN AND PROFILE - 19+85 TO 24+85

NO. 9	215
DATE	
PROJECT NO.	10PP-05
CIVIL	

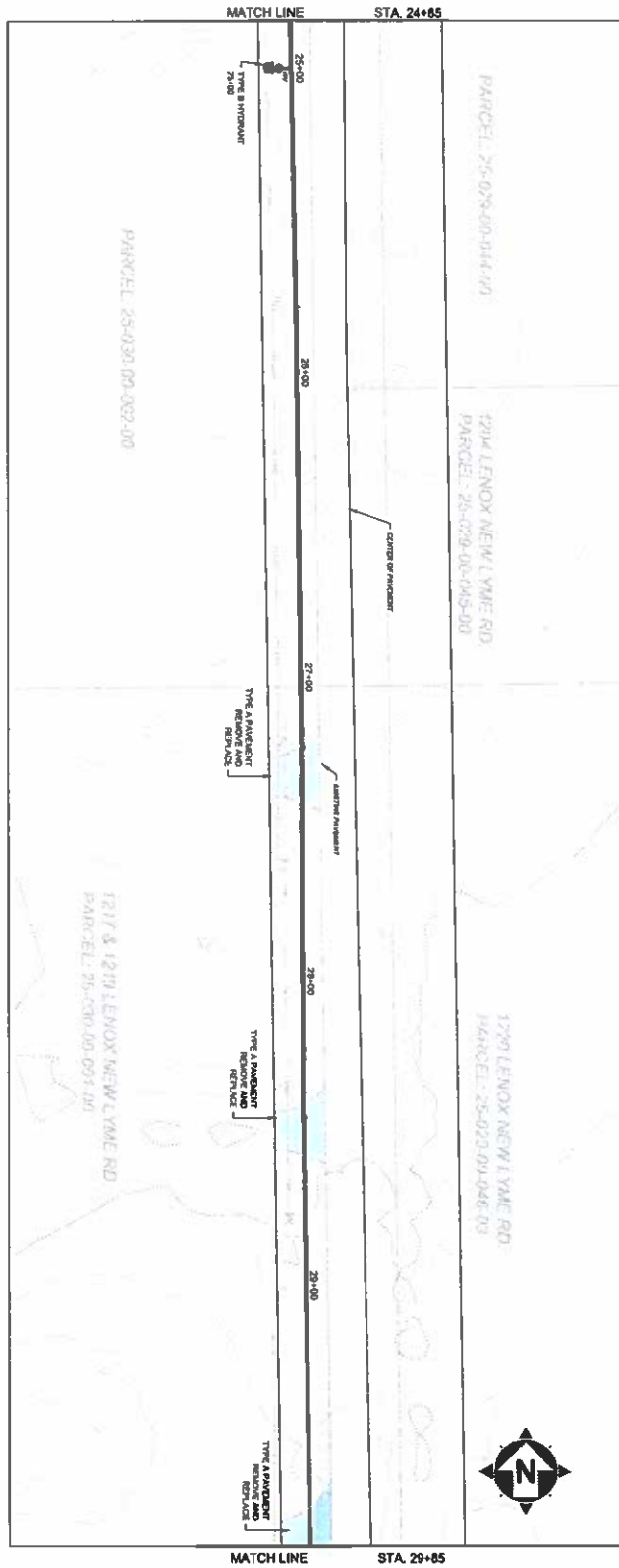


SCALE: HORIZ. 1" = 20'
 VERT. 1" = 4'



SCALE: HORIZ. 1" = 20'
VERT. 1" = 5'

LENOX NEW LYME 24+85.00' TO 29+85.00'



NO. 10	DATE 10/17/08	BY 23
CIVIL		
ASHTABULA COUNTY		

ASHTABULA COUNTY
LENOX LYME WATER BOOSTER STATION
 ASHTABULA COUNTY, JEFFERSON, OHIO
 PLAN AND PROFILE - 10 SERIES
 PLAN AND PROFILE - 24+85 TO 29+85

ISSUED FOR	REVIEW SET	NO.	REVISION	DATE
ISSUE DATE:	1-31-04			
SCALE:	AS NOTED			
DESIGNED BY:	GBC & MLB			
DRAWN BY:	JAB			
CHECKED BY:	GBC			

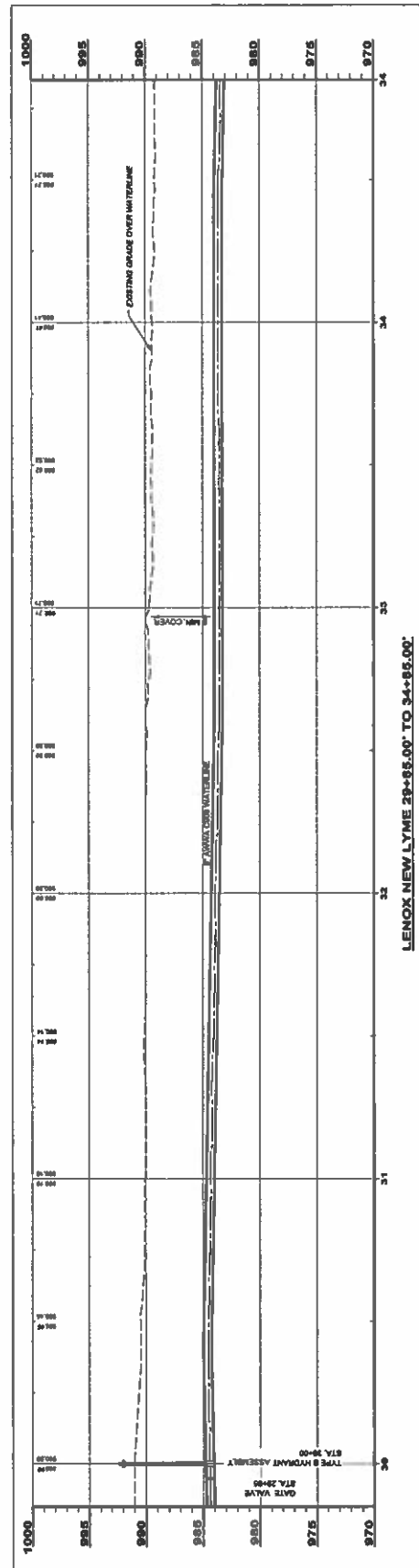
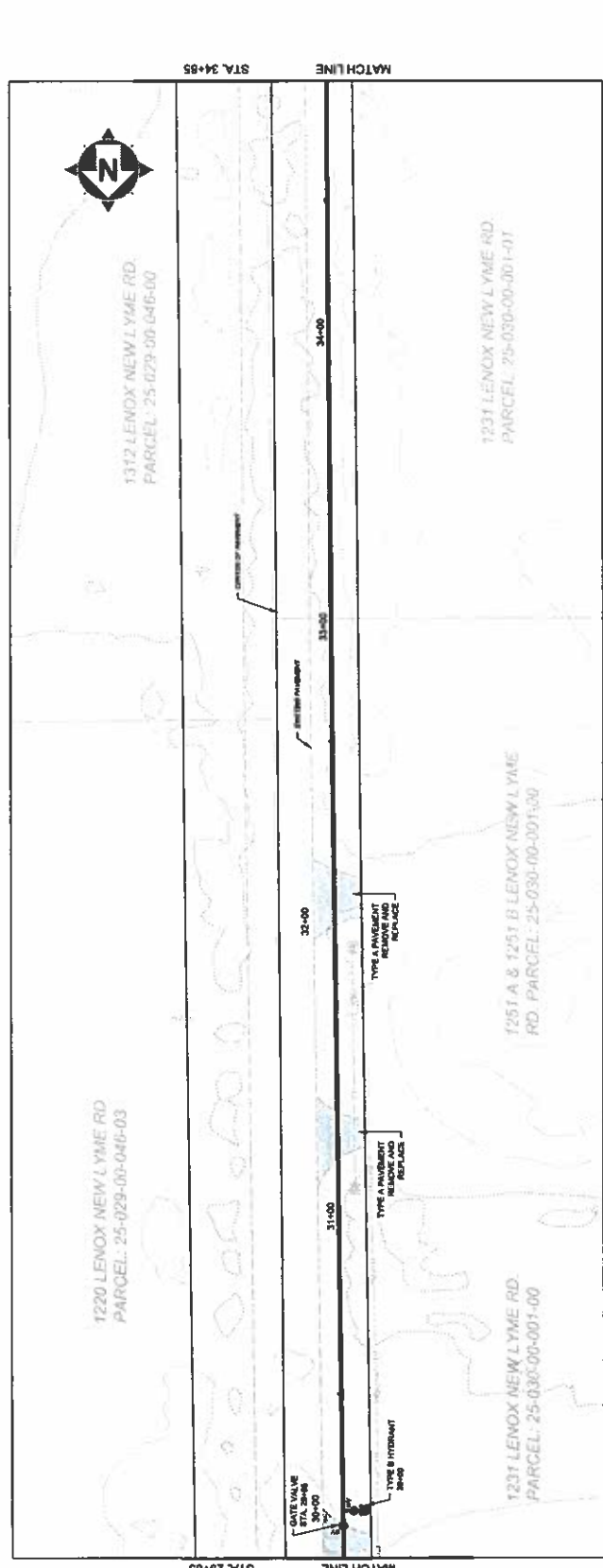




DATE	12/14/11
PROJECT NO.	1234
PROJECT NAME	NEWW BRT
SCALE	AS NOTED
DESIGNED BY	DBC & MJB
DRAWN BY	DBC
CHECKED BY	DBC

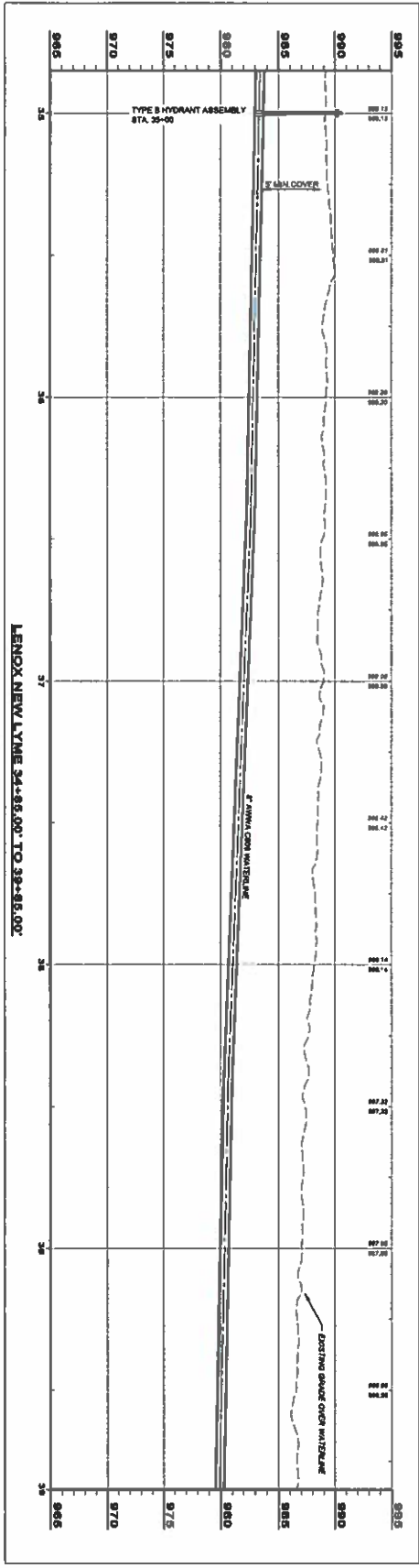
ASHTABULA COUNTY
 LENOX LYNE WATER BOOSTER STATION
 JEFFERSON, OHIO
 PLAN AND PROFILE - 10 SERIES
 PLAN AND PROFILE - 29+85 TO 34+85

DATE	12/14/11
PROJECT NO.	10PP-07
PROJECT NAME	CIVIL
SCALE	1" = 20'
DATE	11
NO.	25



LENOX NEW LYME 29+85.00' TO 34+85.00'

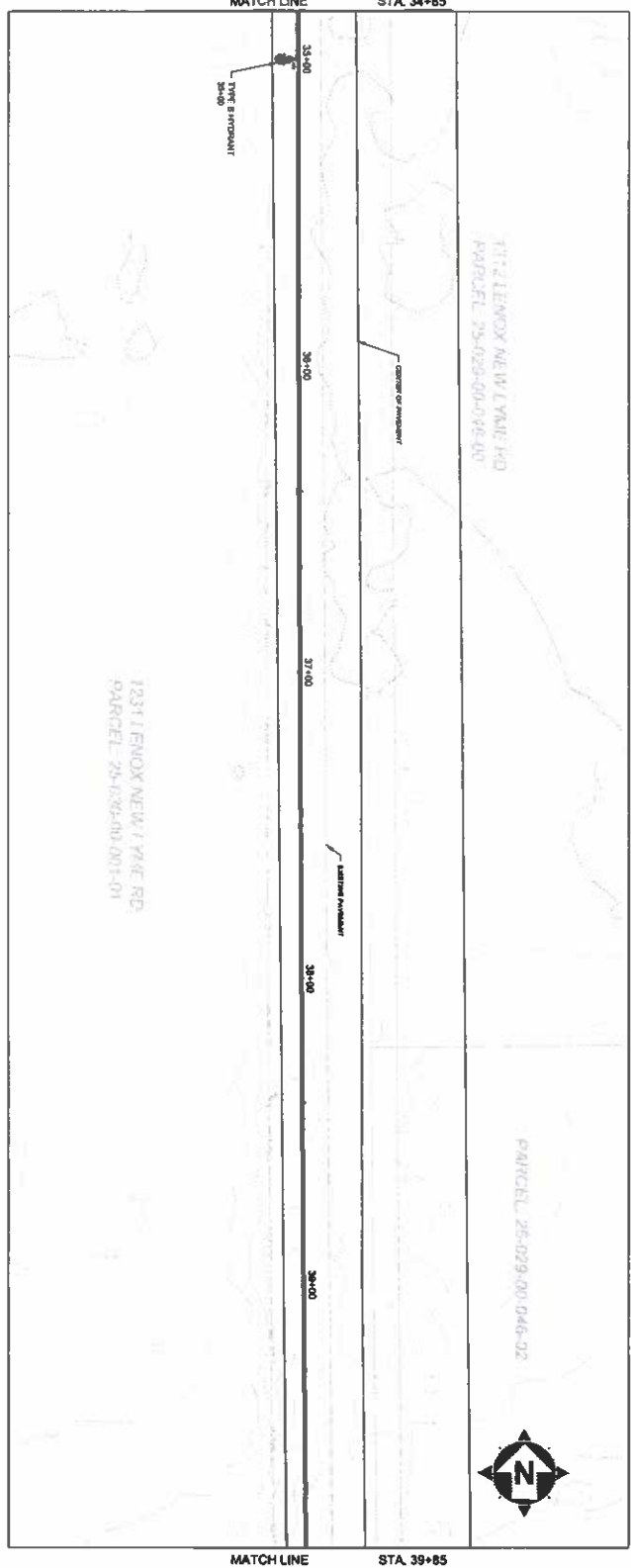
SCALE: HORIZ. 1" = 20'
 VERT. 1" = 2'



LENOX NEW LYME 34+85.00' TO 39+85.00'

SCALE HORIZ. 1" = 40'

VERT. 1" = 4'



MATCH LINE STA. 34+85

MATCH LINE STA. 39+85

NO.	DATE
12	10/27/08
25	

ASHTABULA COUNTY
LENOX LYME WATER BOOSTER STATION
 ASHTABULA COUNTY JEFFERSON, OHIO
 PLAN AND PROFILE - 10 SERIES
 PLAN AND PROFILE - 34+85 TO 39+85

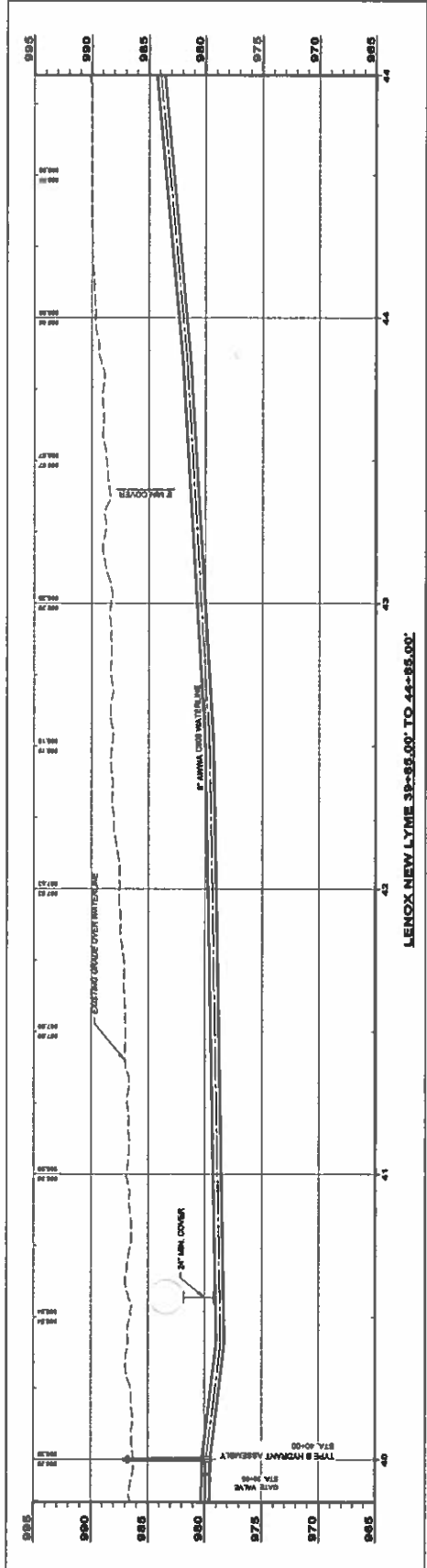
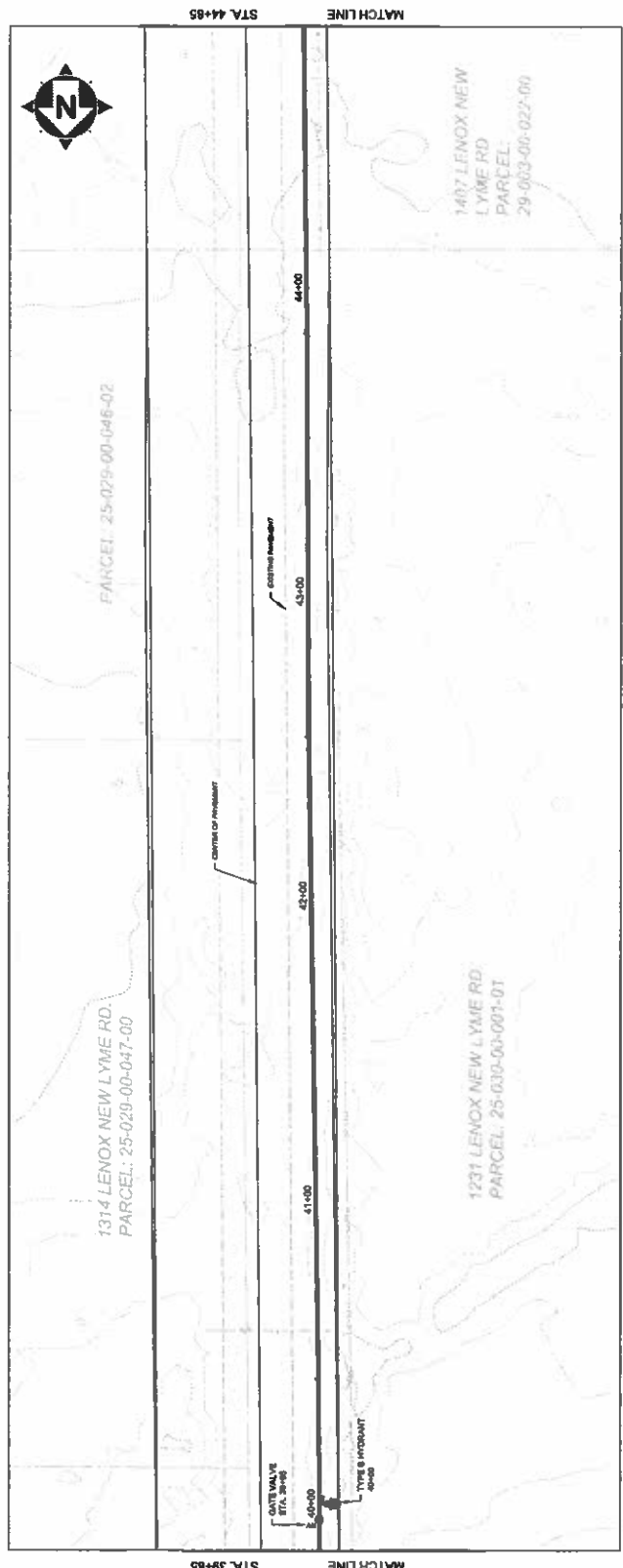
ISSUED FOR	REVIEW SET	NO.	REVISION	DATE
ISSUE DATE	1-31-09			
SCALE	AS NOTED			
DRAWN BY	OBC & MJB			
CHECKED BY	OBC			





PROJECT NO.	1314
DATE	12/1/20
SCALE	AS NOTED
DRAWN BY	QAC & M.L.S.
CHECKED BY	
DESIGNED BY	
APPROVED BY	
DATE	

ASHTABULA COUNTY
 LENOX LYME WATER BOOSTER STATION
 PLAN AND PROFILE - 10 SERIES
 JEFFERSON, OHIO
 PROJECT NO. 1314
 DATE 12/1/20
 SCALE AS NOTED
 DRAWN BY QAC & M.L.S.
 CHECKED BY
 DESIGNED BY
 APPROVED BY
 DATE



LENOX NEW LYME 39+85.00 TO 44-85.00'

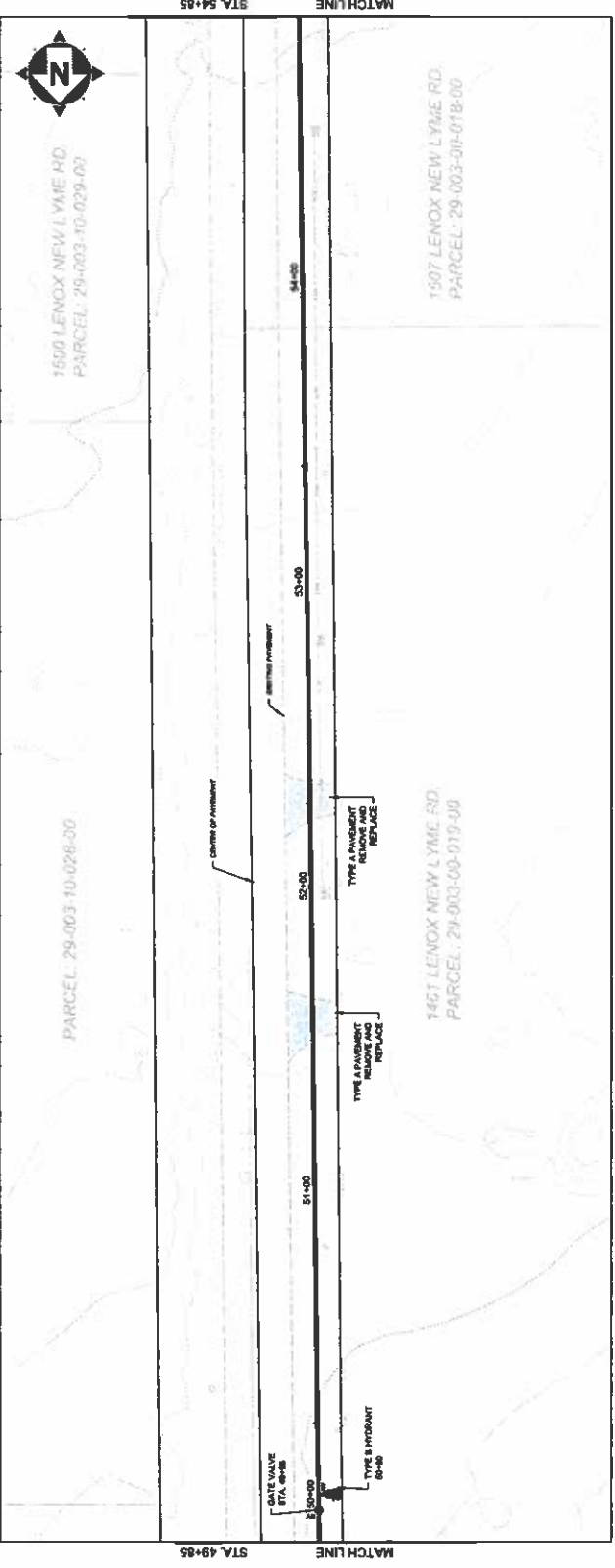
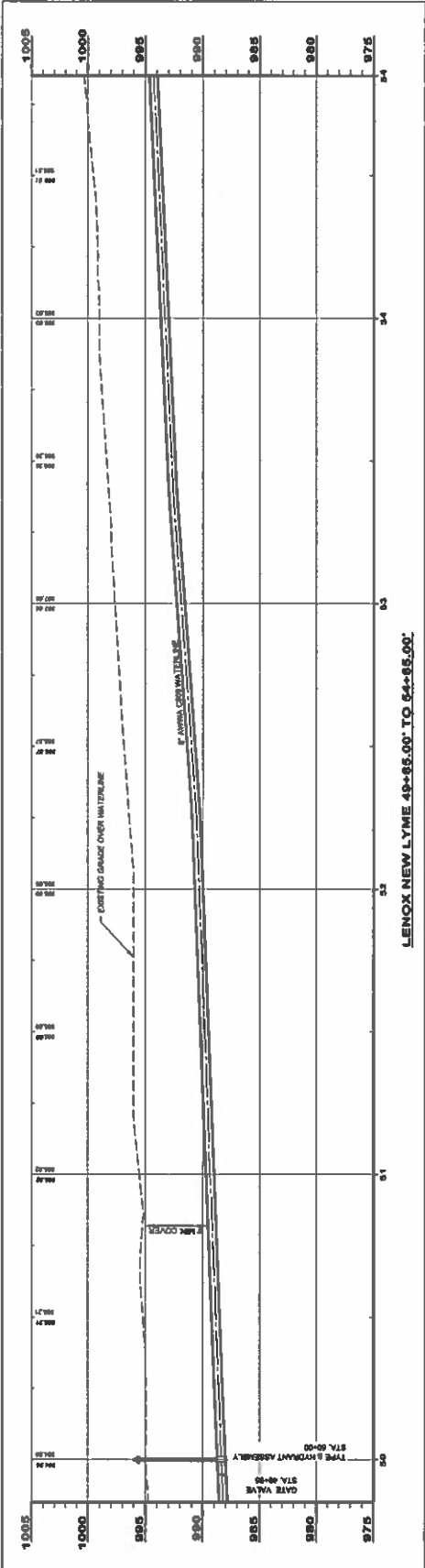
SCALE HORIZ. 1" = 30'
 VERT. 1" = 5'



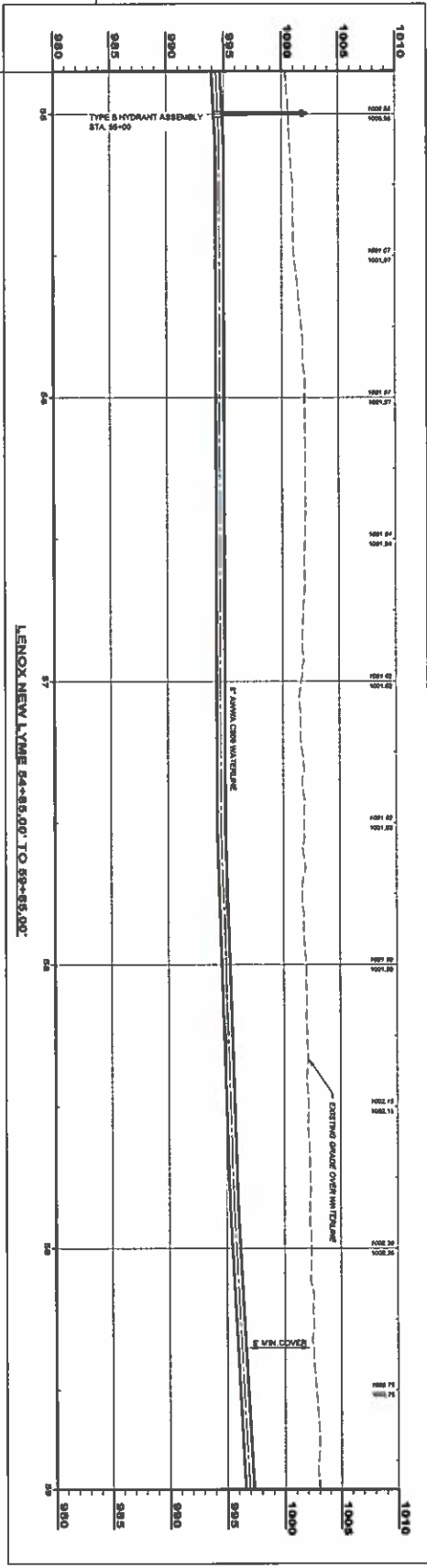
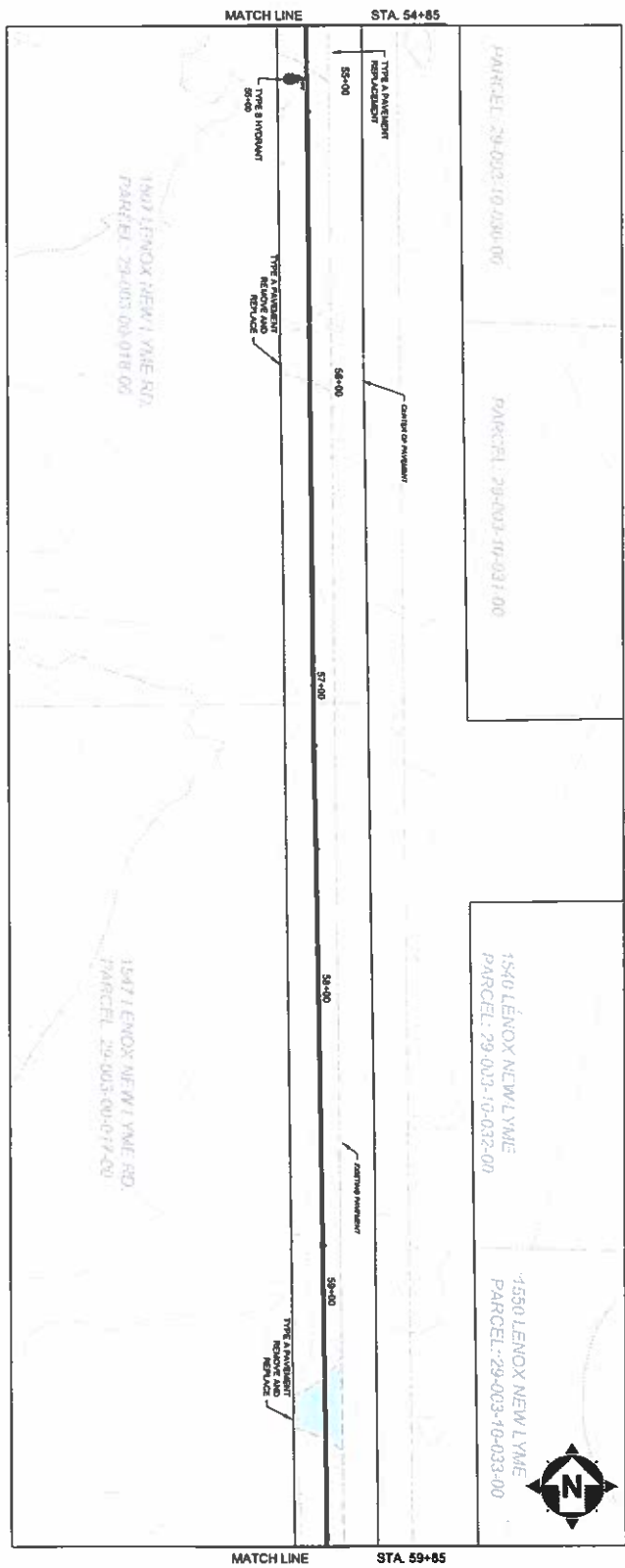
NO.	DATE	REVISION
1	1-14-24	AS NOTED
2	8-28-24	REVISION
3	9-18-24	REVISION
4	10-18-24	REVISION
5	11-18-24	REVISION

DESIGNED BY	JSM
CHECKED BY	JSM
DATE	10/18/24
PROJECT NO.	24-00000000
PROJECT NAME	LENOX LIME WATER BOOSTER STATION
CITY	JEFFERSON, OHIO
COUNTY	ASHTABULA COUNTY

SCALE	1" = 20'
VERT.	1" = 5'
DATE	10/18/24
DRAWN BY	JSM
CHECKED BY	JSM
PROJECT NO.	24-00000000
PROJECT NAME	LENOX LIME WATER BOOSTER STATION
CITY	JEFFERSON, OHIO
COUNTY	ASHTABULA COUNTY

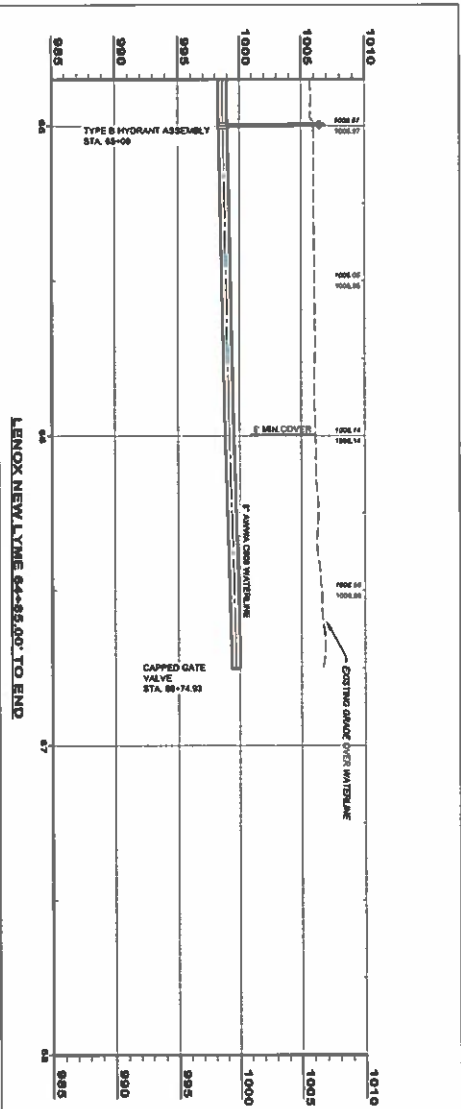
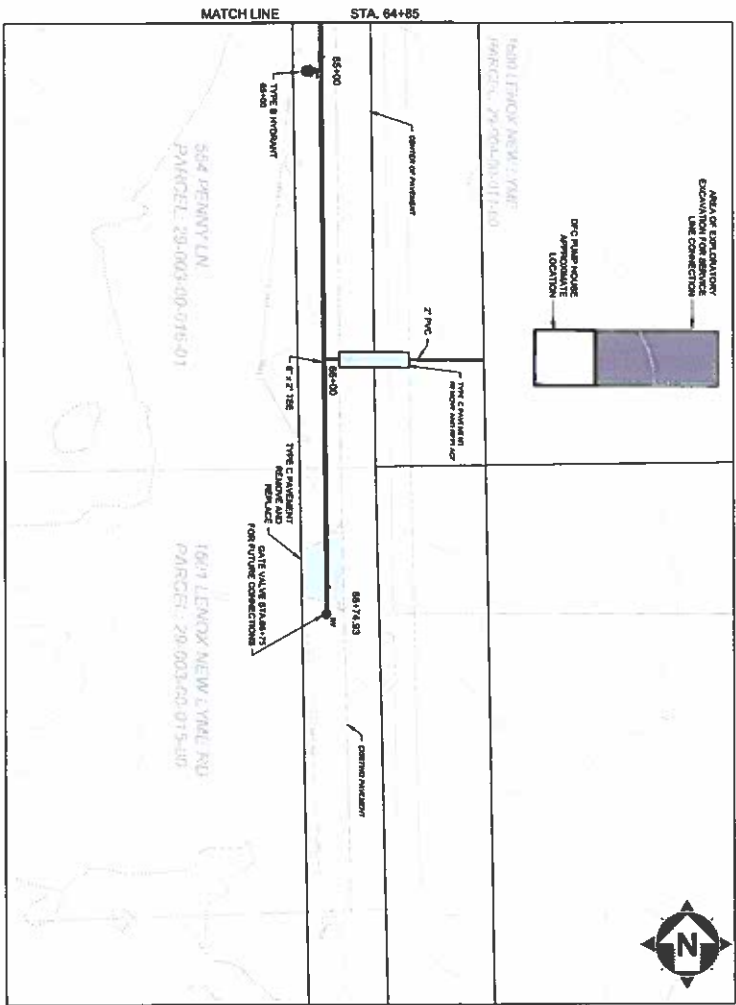


SCALE: HORIZ. 1" = 20'
VERT. 1" = 5'



SCALE HORIZ. 1" = 25'
VERT. 1" = 5'

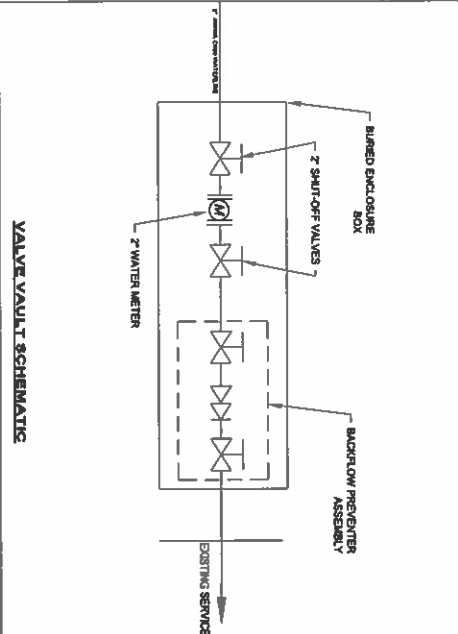
ASHTABULA COUNTY LENOX LYME WATER BOOSTER STATION PLAN AND PROFILE - 10 SERIES PLAN-AND-PROFILE - 54+85 to 59+85		DESIGNED FOR: REVIEW SET ISSUE DATE: 1-21-24 SCALE: AS NOTED DESIGNED BY: OBC & MJB DRAWN BY: JBB CHECKED BY: OBC	NO. 10 DATE: 10-7-12 16 25		
--	--	--	-------------------------------------	--	--



SCALE: HORIZ. 1" = 2'
VERT. 1" = 2'



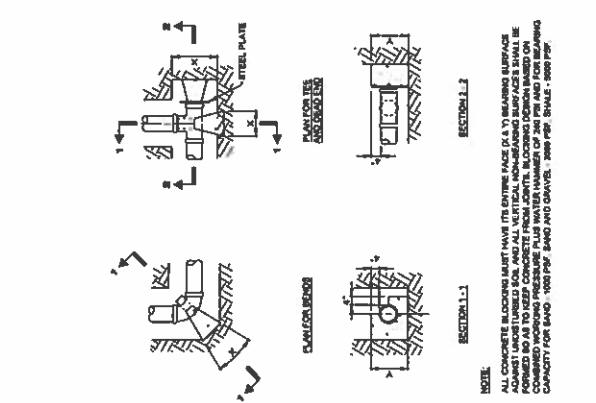
- NOTES:**
1. THE CONTRACTOR SHALL PERFORM AN EXHAUSTIVE EXAMINATION TO RELOCATE THE TIE-IN POINT WITH THE EXISTING ABOVE GROUND WATER DISTRIBUTION SYSTEM PRIOR TO PERFORMING THE RECONSTRUCTION OF THE ABOVE GROUND TIE-IN.
 2. CONSTRUCTION SHALL INSTALL A WATER METER AND BACKFLOW PREVENTER ASSEMBLY ON THE DPC SERVICE LINE HOUSED WITHIN A BURRED ENCLOSURE.
 3. SHUT-OFF VALVES SHALL BE INSTALLED ON BOTH SIDES OF THE METER.
 4. THE BACKFLOW PREVENTER SHALL BE A COMPLETE BACKFLOW PREVENTER, CONSISTING OF TWO CHECK VALVES AND A PRESSURE SENSITIVE SHUT-OFF VALVE, INSTALLED IN ACCORDANCE WITH ANNA 0210.
 5. LOCATION OF SERVICE LINE IS APPROXIMATE AND SHALL BE COORDINATED WITH THE COUNTY.



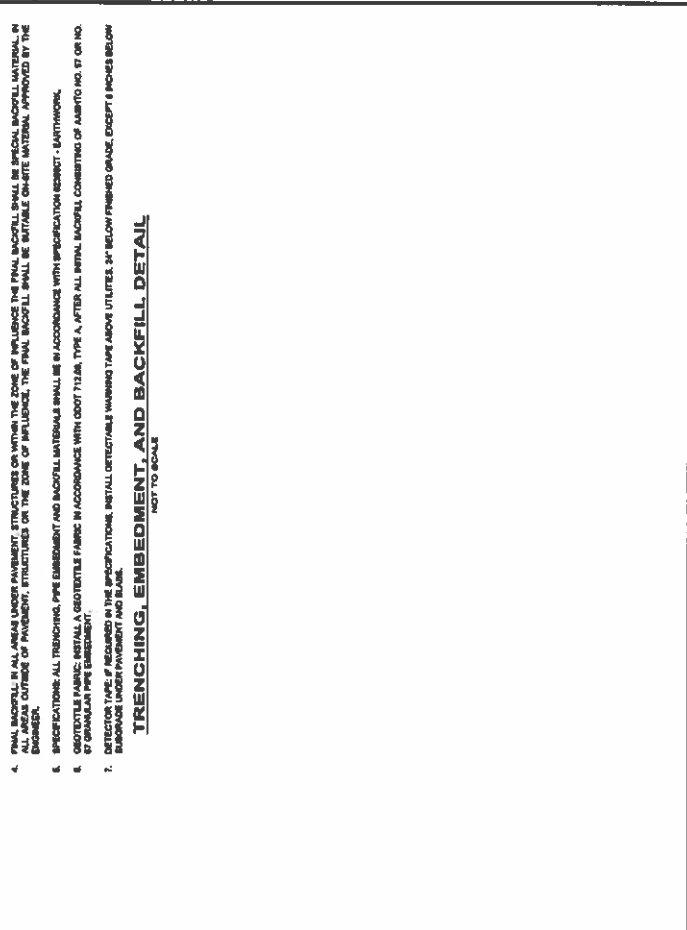
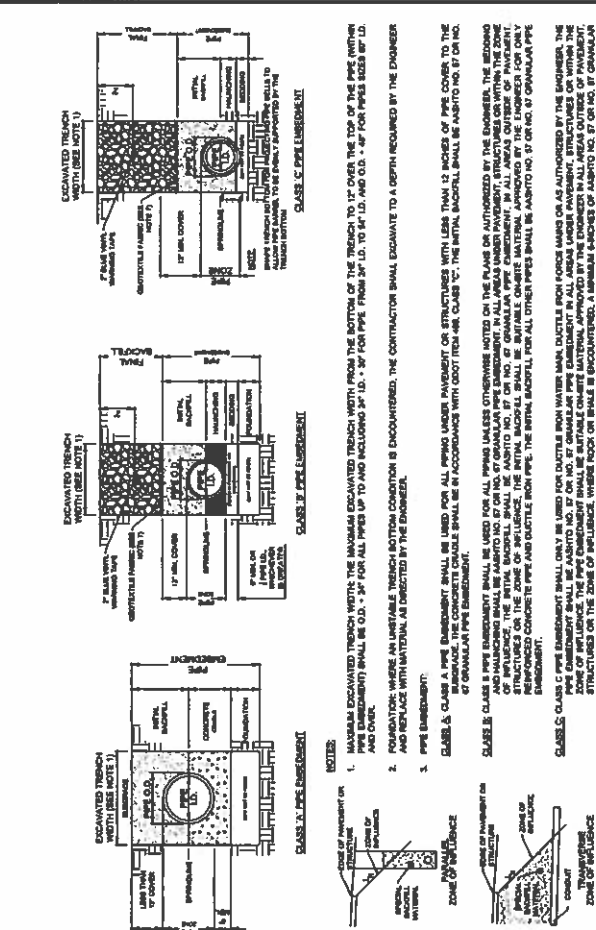
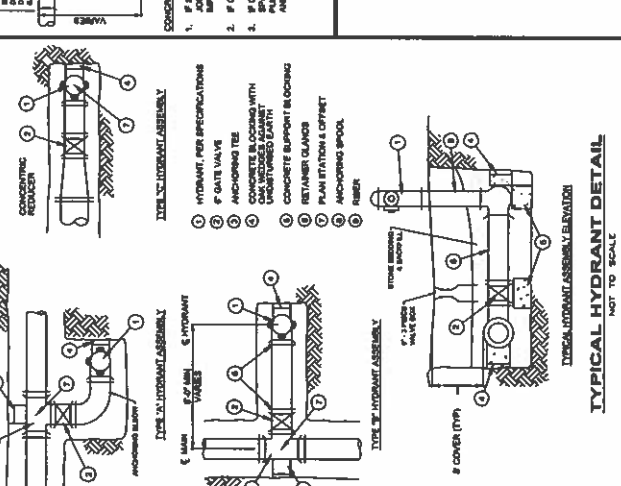
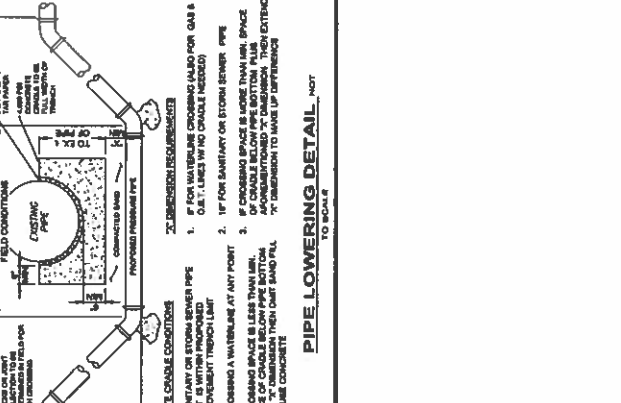
ASHTABULA COUNTY LENOX LYME WATER BOOSTER STATION ASHTABULA COUNTY JEFFERSON, OHIO PLAN AND PROFILE - 10 SERIES PLAN AND PROFILE - 64+85 TO END	REVISION NO. DATE 1 1-31-24 2 AS NOTED 3 GBC & MLD 4 JGB 5 GBC	SCALE: AS NOTED PREPARED BY: GBC & MLD CHECKED BY: GBC		
---	--	--	--	--

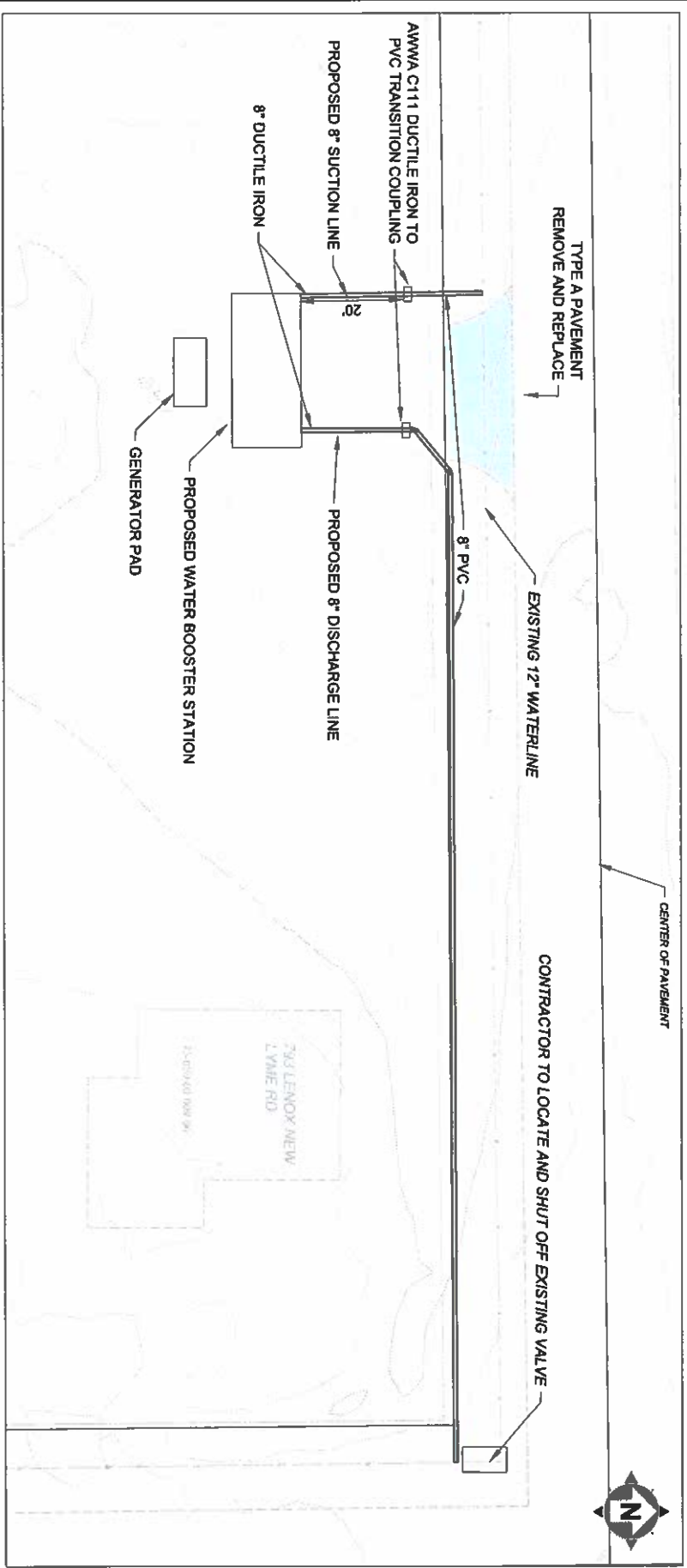


DATE	
REVISION	
APPROVED BY	
CHECKED BY	
DESIGNED BY	
SCALE	
AS NOTED	
PROJECT	
DATE	



PIPE SIZE	22-1/2" BEND		48" BEND	
	SOIL BEARING CAPACITY	SOIL BEARING CAPACITY	SOIL BEARING CAPACITY	SOIL BEARING CAPACITY
4	1.60	0.48	2.70	0.80
6	0.14	0.09	0.08	0.08
8	2.60	0.93	8.50	1.85
10	1.18	0.10	0.07	0.10
12	4.80	1.80	9.80	3.20
14	7.60	2.83	18.70	5.25
16	0.83	0.34	0.25	0.18
18	11.20	3.78	22.30	7.43
20	0.82	0.40	0.75	0.48
22	18.20	5.10	34.00	10.08
24	0.76	0.48	0.86	0.64
26	18.80	6.80	34.10	13.03
28	1.17	0.70	0.49	0.78
30	1.17	0.70	0.49	0.81
32	1.17	0.70	0.49	0.81
34	1.17	0.70	0.49	0.81
36	1.17	0.70	0.49	0.81
38	1.17	0.70	0.49	0.81
40	1.17	0.70	0.49	0.81
42	1.17	0.70	0.49	0.81
44	1.17	0.70	0.49	0.81
46	1.17	0.70	0.49	0.81
48	1.17	0.70	0.49	0.81
50	1.17	0.70	0.49	0.81
52	1.17	0.70	0.49	0.81
54	1.17	0.70	0.49	0.81
56	1.17	0.70	0.49	0.81
58	1.17	0.70	0.49	0.81
60	1.17	0.70	0.49	0.81
62	1.17	0.70	0.49	0.81
64	1.17	0.70	0.49	0.81
66	1.17	0.70	0.49	0.81
68	1.17	0.70	0.49	0.81
70	1.17	0.70	0.49	0.81
72	1.17	0.70	0.49	0.81
74	1.17	0.70	0.49	0.81
76	1.17	0.70	0.49	0.81
78	1.17	0.70	0.49	0.81
80	1.17	0.70	0.49	0.81
82	1.17	0.70	0.49	0.81
84	1.17	0.70	0.49	0.81
86	1.17	0.70	0.49	0.81
88	1.17	0.70	0.49	0.81
90	1.17	0.70	0.49	0.81
92	1.17	0.70	0.49	0.81
94	1.17	0.70	0.49	0.81
96	1.17	0.70	0.49	0.81
98	1.17	0.70	0.49	0.81
100	1.17	0.70	0.49	0.81





**WATER BOOSTER STATION
PROPOSED SITE PLAN**



SITE IMPROVEMENT NOTES:

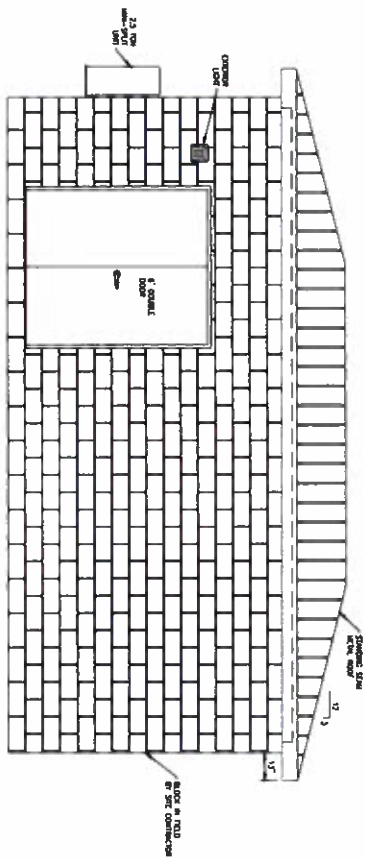
1. ALL NEW BOND, SUCTION AND DISCHARGE PIPING SHALL INCLUDE THE NECESSARY JOINTS.
2. ALL BOND JOINTS SHALL BE APPROVED BY THE DISTRICT ENGINEER.
3. ALL PIPING TO BE INSTALLED UNDER THE 12\"/>

ASHTABULA COUNTY	200-01
LENEX LYME WATER BOOSTER STATION	200-01
PROCESS	200-01
DATE	22
NO.	23

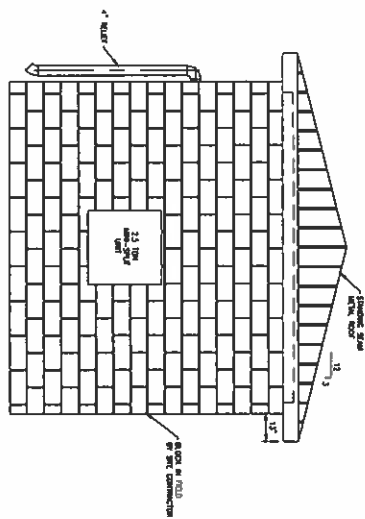
ASHTABULA COUNTY	JEFFERSON, OHIO
PROCESS - 20 SERIES	PROPOSED SITE PLAN

REVISED FOR	REVIEW SET	NO.	REVISION	DATE
ISSUE DATE	4-1-24			
SCALE	AS NOTED			
DESIGNED BY	GBC & M.S.B.			
DRAWN BY	JOB			
CHECKED BY	GBC			

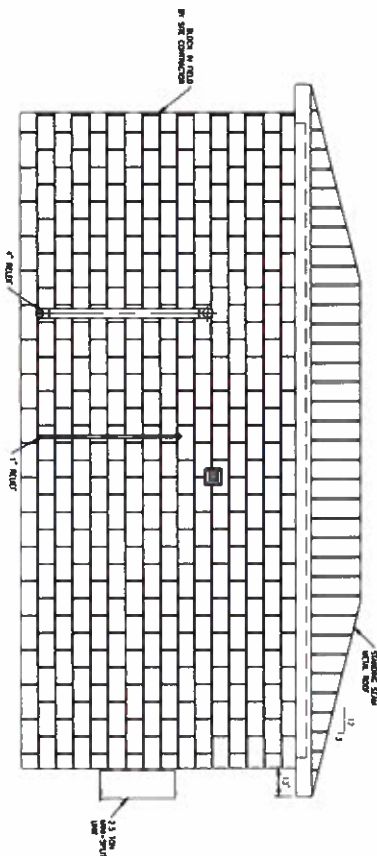




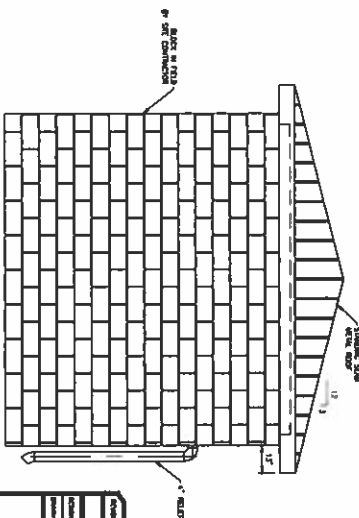
FRONT ELEVATION



LEFT ELEVATION



BACK ELEVATION



RIGHT ELEVATION

NOTE: THIS DRAWING IS PROVIDED FOR INCLUSION IN BID DOCUMENTS.

© COPYRIGHT EFL-SOLUTIONS - 2024
 This drawing and all the information contained herein is the property of EFL-SOLUTIONS. It is to be used only for the project and site identified herein. No part of this drawing may be reproduced, stored in a retrieval system, or transmitted in any form or by any means, electronic, mechanical, photocopying, recording, or by any information storage and retrieval system, without the prior written permission of EFL-SOLUTIONS.

The Owner is responsible for obtaining all other utility, zoning, and other permits required for this project. The Owner is responsible for obtaining all other utility, zoning, and other permits required for this project. The Owner is responsible for obtaining all other utility, zoning, and other permits required for this project.

EFL-SOLUTIONS
 4111-solutions.com
 24. 901 7th Avenue, Suite 200 • Independence, MO 64050
 816-835-1100

BOOSTER PUMP STATION
 LENOX - NEW LYME PUMP STATION
 ASHTABULA COUNTY, OH

PROJECT NO: 200405
 SHEET NO: 24

NO	DATE	REVISION	BY	CHECKED BY
1	1-31-24	ISSUE DATE		
2		SCALE: AS NOTED		
3		DRAWN BY: GBC & MLE		
4		CHECKED BY: JMB		
5		DESIGNED BY: GBC		

your trusted advisor
consultants — engineers
 architects
 planners



ASHTABULA COUNTY
 LENOX LYME WATER BOOSTER STATION
 ASHTABULA COUNTY JEFFERSON, OHIO
 PROCESS - 20 SERIES
 BOOSTER STATION 2



DATE	1/1/24
REVISION	
REVISION NO.	
REVISION BY	
REVISION DATE	
DESIGNED BY	JAG
CHECKED BY	JAG
DATE	08/01/24

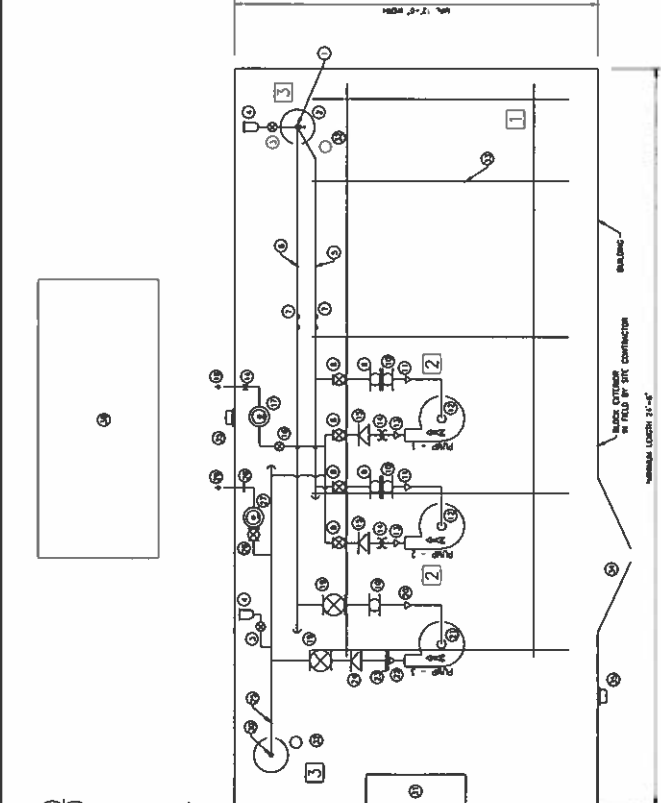
PROJECT NO.	200D-04
PROJECT NAME	LENOX LIME WATER BOOSTER STATION
CLIENT	JEFFERSON, OHIO
LOCATION	ASHTABULA COUNTY
DATE	1/1/24
SCALE	AS NOTED
DESIGNED BY	JAG & MJS
CHECKED BY	JAG
DATE	08/01/24

PROJECT NO.	200D-04
PROJECT NAME	LENOX LIME WATER BOOSTER STATION
CLIENT	JEFFERSON, OHIO
LOCATION	ASHTABULA COUNTY
DATE	1/1/24
SCALE	AS NOTED
DESIGNED BY	JAG & MJS
CHECKED BY	JAG
DATE	08/01/24

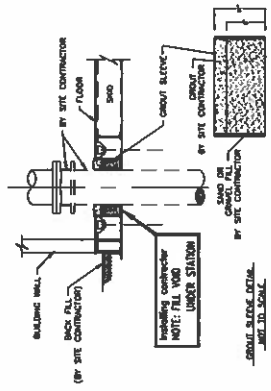
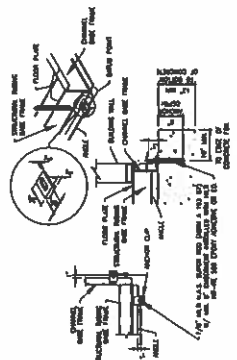
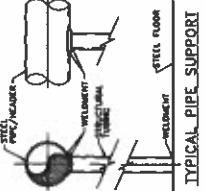
© COPYRIGHT EFI - SOLUTIONS - 2024
 All drawings and all information contained herein are the property of EFI - SOLUTIONS. No part of this drawing may be reproduced, stored in a retrieval system, or transmitted in any form or by any means, electronic, mechanical, photocopying, recording, or by any information storage and retrieval system, without the prior written permission of EFI - SOLUTIONS.

LEGEND

1) 8" MAIN SUCTON
2) HOSE BRID
3) 1" BALL VALVE
4) 1" AIR RELEASE VALVE
5) 4" SUCTON HEADER
6) 8" SUCTON HEADER
7) CLAMP-ON FLOW METER
8) 2 1/2" GATE VALVE
9) 2 1/2" STRAINER
10) ELASTOMER PIPE CONNECTOR
11) 2 1/2" x 1 1/4" ECCENTRIC REDUCER
12) 3/4" HP PUMP
13) 2 1/2" x 1 1/4" CONCENTRIC REDUCER
14) SELF RESTRAINED COUPLING
15) 2 1/2" SWING FLEX CHECK VALVE
16) 1" RELIEF VALVE
17) 1" RELIEF TO ATMOSPHERE
18) 8" GATE VALVE
19) 8" x 5" ECCENTRIC REDUCER
20) 8" x 4" CONCENTRIC REDUCER
21) 75 HP PUMP
22) 8" x 4" CONCENTRIC REDUCER
23) FLANGED COUPLING ADAPTER
24) 8" SWING FLEX CHECK VALVE
25) 8" DISCHARGE HEADER
26) 4" GATE VALVE
27) 4" RELIEF VALVE
28) 4" METALLIC COUPLING
29) 4" RELIEF TO ATMOSPHERE
30) 8" MAIN DISCHARGE
31) 2.5 TON WASH-SPLIT UNIT
32) 1" TON CHANGE VALV W/ DOWN HOIST
33) 8 FOOT DOUBLE DOOR
34) EXTERIOR LIGHT
35) GENSET IN WEATHER HOUSING (SNIP LOOSE)



PLAN



- ELECTRICAL PANEL, SERVICE AND CONTROL PANELS SHALL BE WALL MOUNTED. ALL PANELS SHALL BE COMPLETELY UNOBSTRUCTED AND SHALL BE MOUNTED IN FRONT OF THE PANEL. SUCH AREA TO EXTEND FLOOR TO CEILING.
- PUMPS MUST BE ANCHORED SUCH THAT A MINIMUM 3/4" WPC UNOBSTRUCTED WEATHER SERVICE SPACE ON THREE SIDES OF EACH PUMP IS PROVIDED WITHOUT OBSTRUCTION OF STEPPING OVER ANY SERVICE OF PUMP.
- OPTIMUM LOCATIONS ARE TYPICAL. CONTRACTOR IS TO CONFIRM ACTUAL SIZE AND LOCATION WITH BOOSTER STATION MANUFACTURER.

NOTE: THIS DRAWING IS PROVIDED FOR INCLUSION IN BID DOCUMENTS.



BOOSTER PUMP STATION
 LENOX - NEW LIME PUMP STATION
 ASHTABULA COUNTY, OH

PROJECT NO. 200D-04
 PROJECT NAME: LENOX LIME WATER BOOSTER STATION
 CLIENT: JEFFERSON, OHIO
 LOCATION: ASHTABULA COUNTY

PROJECT NO.	200D-04
PROJECT NAME	LENOX LIME WATER BOOSTER STATION
CLIENT	JEFFERSON, OHIO
LOCATION	ASHTABULA COUNTY
DATE	1/1/24
SCALE	AS NOTED
DESIGNED BY	JAG & MJS
CHECKED BY	JAG
DATE	08/01/24

